



## *Tony Rago's Pre-Market Playbook*

### ★ Overnight Range

- ES 57.50
- NQ 284.00

### ★ VIX 19.49-- HIGH VOL

★ **Bulls** need to hold above yest closes **6713** and **24941**-- long above these

★ Breakouts are above yesterdays highs **6766** and **25115** - **aggressive longs** (await for confirmation with a new high and a retest of the highs from above that holds

★ **Bears** need under overnight lows **short under 6702** and **24874**

★ Breakdown is below yest lows **6651** and **24663** -- **aggressive shorts** (wait for

★ confirmation with a new low and a retest of the lows from below that hold)

★ **RANGEBOUND: 2 Way trade long and shorts will work** to get the day done

★ Keep it simple and be patient for confirmation on either side or establish the range if we are going to be rangebound

★ Confirm rally continuation with sustained trade over the 30min IB High and likewise

★ bearish under the IB Low

### **ECON:**

- 8:30 am \*U.S. retail sales
- 8:30 am \*Core PPI
- 8:30 am \*Initial jobless claims
- 8:30 am Philadelphia Fed manufacturing survey
- 9:00 am Fed governor Stephen Miran speaks
- 9:00 am Fed governor Christopher Waller speaks
- 10:00 am \*Business inventories
- 10:00 am Home builder confidence index
- 10:00 am Fed governor Michelle Bowman speaks
- 12:45 pm Richmond Fed President Tom Barkin speaks

## *Pre-Market Trading Levels for today*

---

### **GLOBEX**

#### **NQ**

★ **HIGH:** 25072.00

★ **LOW:** 24874.75

★ **Bull Case** defend the 24750 to seek the 24812, 24833, 54912, 25000, 25106, 25250, 25312, 25333, 25412, 25500

★ **Bear Case** seal the 25106 to seek the 25000, 24912, 24833, 24812, 24750, 24633, 24612, 24500, 24412, 24333, 24312, 24250, 24106, 24000

★ **Overnight Range - 197.25**

#### **NQ (Prev. Day)**

★ High 25115.00

★ Low 24663.25

★ Close 24941.25

**NQ (Week Open) 24542.00**

## S&P 500

★ **HIGH** - 6743.50

★ **LOW** - 6702.50

★ **Bull Case:** defend the 6688 to seek the 6700, 6712, 6726, 6733, 6750, 6762, 6777, 6788, 6800, 6812, 6826

★ **Bear Case:** seal the 6750 to seek the 6733, 6726, 6712, 6700, 6688, 6677, 6662, 6650, 6633, 6626, 6612, 6600, 6588, 6577, 6562, 6550

★ **Overnight Range** - 41.00

### ES (Prev Day)

★ High 6766.75

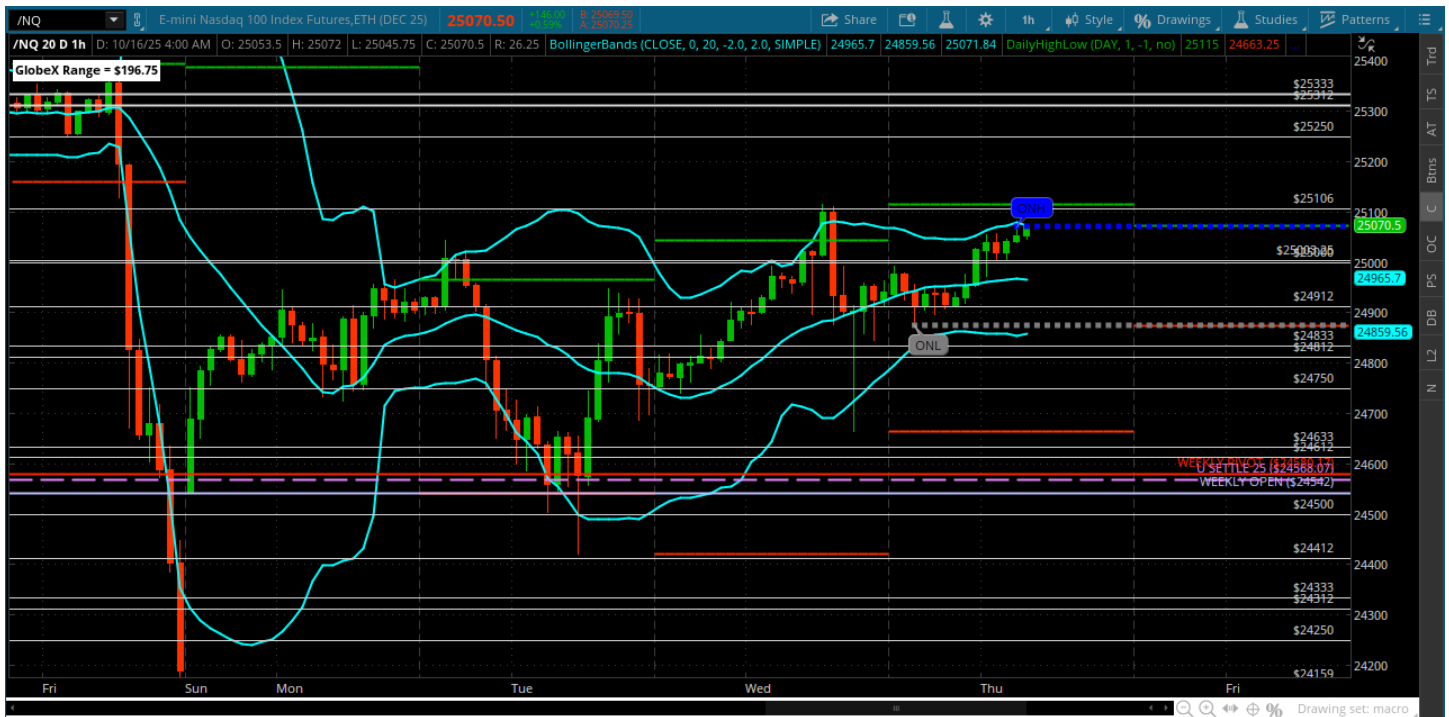
★ Low 6651.50

★ Close 6713.50

ES (Week Open) **6632.00**

## Pre-Market Charts to Watch

Thursday, October 16, 2025 Pre-Market /NQ 1 Hour Chart



- Wide range day with some big waves
- Bulls need to hold a pullback to the 24833 as a higher low vs yesterdays low
- Big rejection from the lows so maybe they will stick
- Next hurdle for the bulls is the 25106



*Disclaimer:*

Disclaimer: Neither TheoTrade or any of its officers, directors, employees, other personnel, representatives, agents or independent contractors is, in such capacities, a licensed financial adviser, registered investment adviser, registered broker-dealer or FINRA|SIPC|NFA-member firm. TheoTrade does not provide investment or financial advice or make investment recommendations. TheoTrade is not in the business of transacting trades, nor does TheoTrade agree to direct your brokerage accounts or give trading advice tailored to your particular situation. Nothing contained in our content constitutes a solicitation, recommendation, promotion, or endorsement of any particular security, other investment product, transaction or investment. Trading Futures, Options on Futures, and retail off-exchange foreign currency transactions involves substantial risk of loss and is not suitable for all investors. You should carefully consider whether trading is suitable for you in light of your circumstances, knowledge, and financial resources. You may lose all or more of your initial investment. Opinions, market data, and recommendations are subject to change at any time. Past Performance is not necessarily indicative of future results.