



Tony Rago's Pre-Market Playbook

- ★ ES WEEKLY PIVOT 6683.00
- ★ NQ WEEKLY PIVOT 24874.33
- ★ Overnight Range
 - ES 43.50
 - NQ 196.75
- ★ VIX 20.79-- HIGH VOL
- ★ **Bulls** need to hold above yest closes **6711 and 25033-- long above these**
- ★ Breakouts are above yesterdays highs **6718 and 2055 - aggressive longs** (await for confirmation with a new high and a retest of the highs from above that holds)
- ★ **Bears** need under overnight lows **short under 6694 and 24955**
- ★ Breakdown is below yest lows **6571 and 24410 -- aggressive shorts** (wait for confirmation with a new low and a retest of the lows from below that hold)
- ★ **RANGEBOUND: 2 Way trade long and shorts will work** to get the day done
- ★ Keep it simple and be patient for confirmation on either side or establish the range if we are going to be rangebound
- ★ Confirm rally continuation with sustained trade over the 30min IB High and likewise
- ★ bearish under the IB Low

ECON:

- 10:00 am U.S. leading economic indicators

Pre-Market Trading Levels for today

GLOBEX

NQ

★ **HIGH:** 25152.50

★ **LOW:** 24955.75

★ **Bull Case** defend the 24812 to seek the 24833, 54912, 25000, 25106, 25250, 25312, 25333, 25412, 25500

★ **Bear Case** seal the 25250 to seek the 25106, 25000, 24912, 24833, 24812, 24750, 24633, 24612, 24500, 24412, 24333, 24312, 24250, 24106, 24000

★ **Overnight Range - 196.75**

NQ (Prev. Day)

★ High 25055.75

★ Low 24410.00

★ Close 25033.50

NQ (Week Open) 25065.75

S&P 500

★ **HIGH** - 6737.50

★ **LOW** - 6694.00

★ **Bull Case:** defend the 6662 to seek the 6677, 6688, 6700, 6712, 6726, 6733, 6750, 6762, 6777, 6788, 6800, 6812

★ **Bear Case:** seal the 6750 to seek the 6733, 6726, 6712, 6700, 6688, 6677, 6662, 6650, 6633, 6626, 6612, 6600, 6588, 6577, 6562, 6550

★ **Overnight Range** - 43.50

ES (Prev Day)

★ High 6718.00

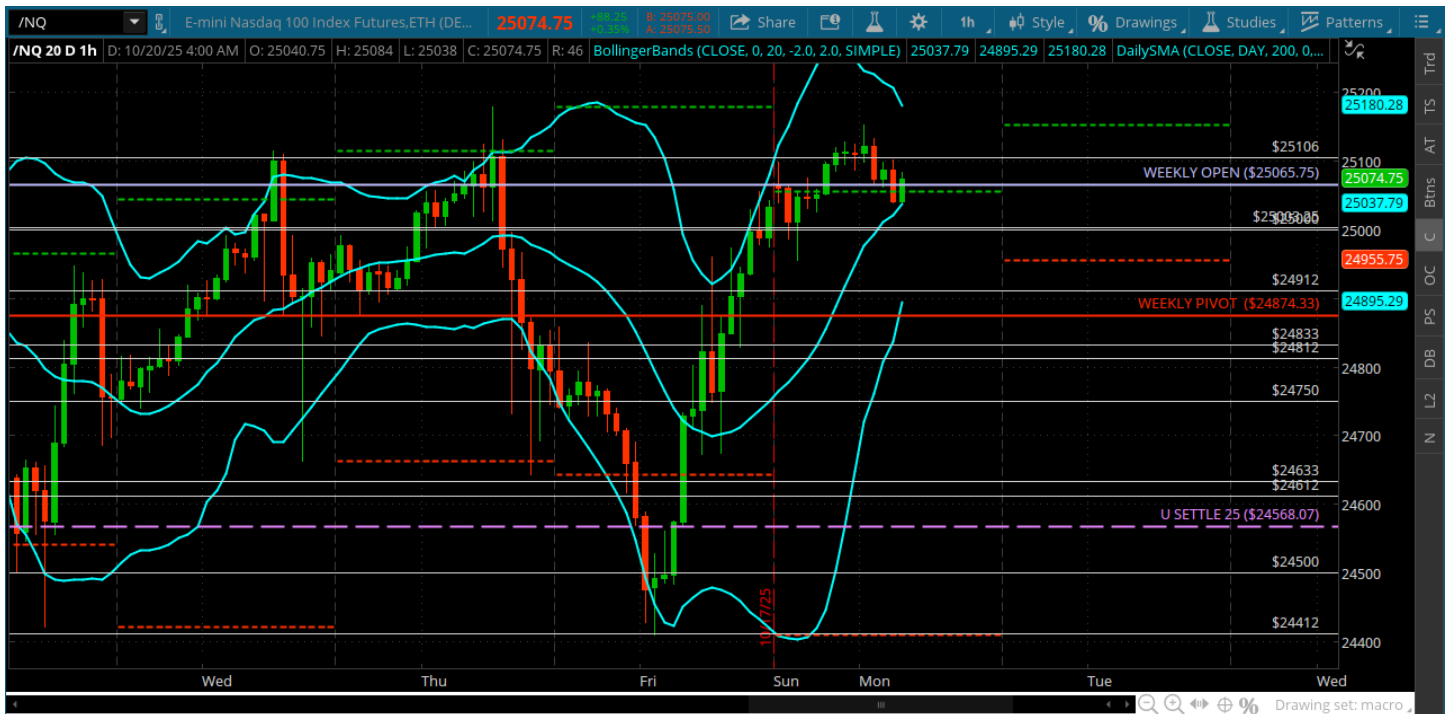
★ Low 6571.25

★ Close 6711.00

ES (Week Open) 6721.00

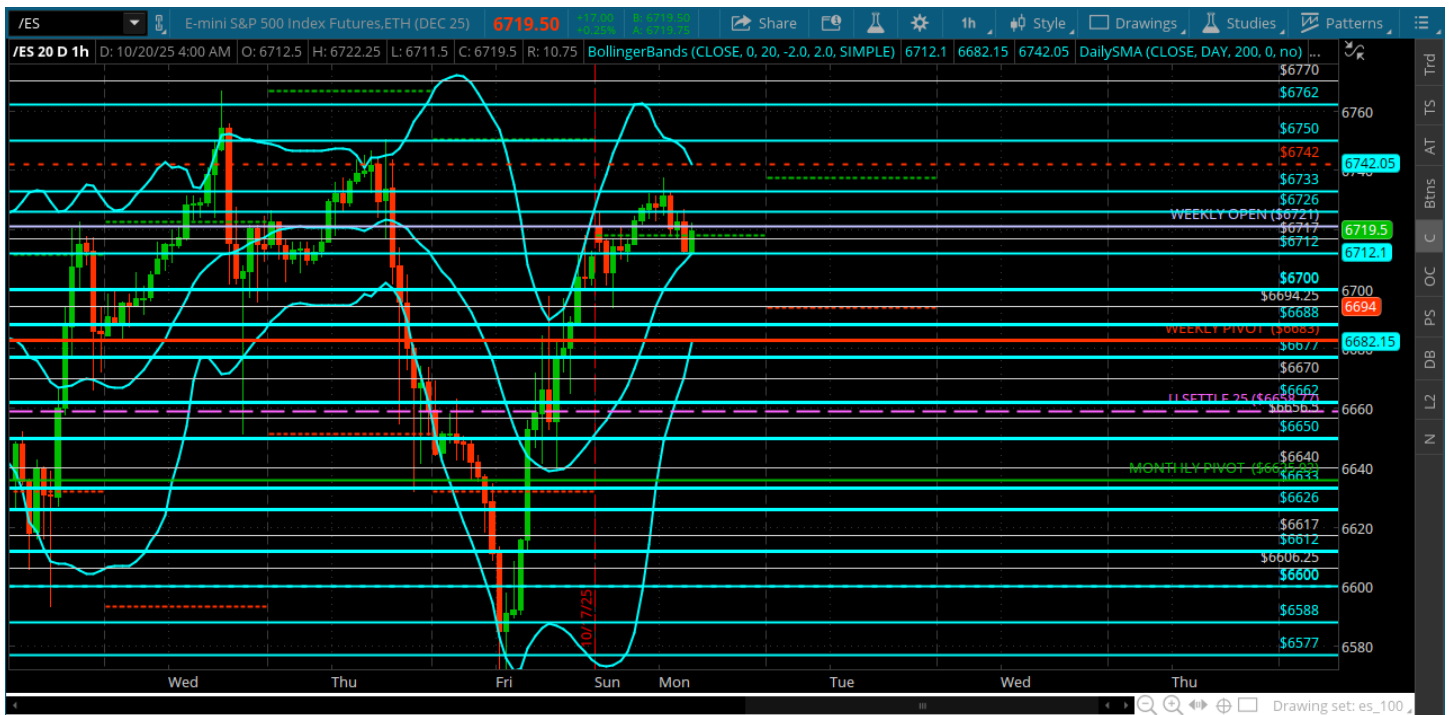
Pre-Market Charts to Watch

Monday, October 20, 2025 Pre-Market /NQ 1 Hour Chart



- Opened above the 25000 – that is the deal on this move
- Above 25000 needs to go get the 25106 and the 25250 in the cash session
- Below the 25000 sets up a test of the weekly pivot below
- Keep it simple and trade what you see
- Halfway back on the move from Friday is the 24750 area

Monday, October 20, 2025 Pre-Market /ES 1 Hour Chart



- Opened and stayed above 6700 for most of the overnight session
- 6700 is the deal for this move – underneath it will be looking for a test of weekly pivot
- Above the weekly open 6721 we can reach for the 6750
- Halfway back on this move from Friday is the 6662 area

Disclaimer:

Disclaimer: Neither TheoTrade or any of its officers, directors, employees, other personnel, representatives, agents or independent contractors is, in such capacities, a licensed financial adviser, registered investment adviser, registered broker-dealer or FINRA|SIPC|NFA-member firm. TheoTrade does not provide investment or financial advice or make investment recommendations. TheoTrade is not in the business of transacting trades, nor does TheoTrade agree to direct your brokerage accounts or give trading advice tailored to your particular situation. Nothing contained in our content constitutes a solicitation, recommendation, promotion, or endorsement of any particular security, other investment product, transaction or investment. Trading Futures, Options on Futures, and retail off-exchange foreign currency transactions involves substantial risk of loss and is not suitable for all investors. You should carefully consider whether trading is suitable for you in light of your circumstances, knowledge, and financial resources. You may lose all or more of your initial investment. Opinions, market data, and recommendations are subject to change at any time. Past Performance is not necessarily indicative of future results.