



Tony Rago's Pre-Market Playbook

★ Overnight Range

- ES 24.75
- NQ 123.75

★ **Bulls** need to hold above yest closes **6772 and 25265-- long above these**

★ Breakouts are above yesterdays highs **6789 and 25368 - aggressive longs** (await for confirmation with a new high and a retest of the highs from above that holds

★ **Bears** need under overnight lows **short under 6664 and 24214**

★ Breakdown is below yest lows **6759 and 25203 -- aggressive shorts** (wait for

★ confirmation with a new low and a retest of the lows from below that hold)

★ **RANGEBOUND: 2 Way trade long and shorts will work** to get the day done

★ Keep it simple and be patient for confirmation on either side or establish the range if we are going to be rangebound

★ Confirm rally continuation with sustained trade over the 30min IB High and likewise

★ bearish under the IB Low

ECON:

- 4:00 pm TSLA Reports

Pre-Market Trading Levels for today

GLOBEX

NQ

★ **HIGH:** 25338.25

★ **LOW:** 25214.50

★ **Bull Case** defend the 25106 to seek the 25250, 25312, 25333, 25412, 25500, 25612, 25633, 25750

★ **Bear Case** seal the 25412 to seek the 25333, 25312, 25250, 25106, 25000, 24912, 24833, 24812, 24750, 24633, 24612, 24500, 24412, 24333, 24312, 24250, 24106, 24000

★ **Overnight Range - 123.75**

NQ (Prev. Day)

★ High 25368.00

★ Low 25203.25

★ Close 25265.25

NQ (Week Open) 25065.75

S&P 500

★ **HIGH** - 6788.75

★ **LOW** - 6764.00

★ **Bull Case:** defend the 6662 to seek the 6677, 6688, 6700, 6712, 6726, 6733, 6750, 6762, 6777, 6788, 6800, 6812

★ **Bear Case:** seal the 6750 to seek the 6733, 6726, 6712, 6700, 6688, 6677, 6662, 6650, 6633, 6626, 6612, 6600, 6588, 6577, 6562, 6550

★ **Overnight Range** - 24.75

ES (Prev Day)

★ High 6789.75

★ Low 6759.25

★ Close 6772.50

ES (Week Open) 6721.00

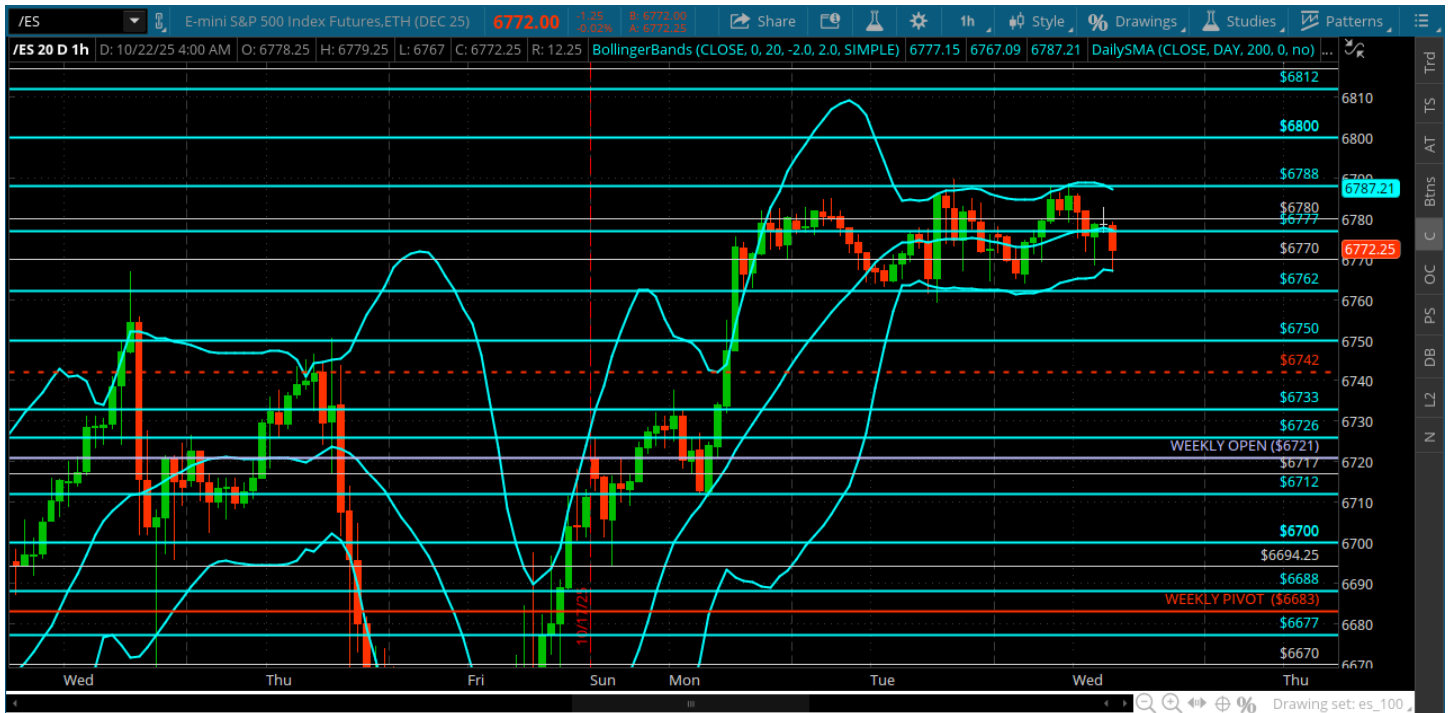
Pre-Market Charts to Watch

Wednesday, October 22, 2025 Pre-Market /NQ 1 Hour Chart



- Consolidation day with some headline risk
- Could be more of that today but looking for price to breakout to a new high at 25412 and 25500 if we can convert the 25312
- Under the 25250 sets up the test of the 25106 which I am looking for support there

Wednesday, October 22, 2025 Pre-Market /ES 1 Hour Chart



- Consolidation tape held in by the 6788 – a push above should get a test of the 6800 and set up a new high
- Buyers are not willing to push it there yet so important for the 6762 to hold today 6750 being the line in the sand for bulls
- Under the 6750 sets up the 6726 and weekly open.
-

Disclaimer:

Disclaimer: Neither TheoTrade or any of its officers, directors, employees, other personnel, representatives, agents or independent contractors is, in such capacities, a licensed financial adviser, registered investment adviser, registered broker-dealer or FINRA|SIPC|NFA-member firm. TheoTrade does not provide investment or financial advice or make investment recommendations. TheoTrade is not in the business of transacting trades, nor does TheoTrade agree to direct your brokerage accounts or give trading advice tailored to your particular situation. Nothing contained in our content constitutes a solicitation, recommendation, promotion, or endorsement of any particular security, other investment product, transaction or investment. Trading Futures, Options on Futures, and retail off-exchange foreign currency transactions involves substantial risk of loss and is not suitable for all investors. You should carefully consider whether trading is suitable for you in light of your circumstances, knowledge, and financial resources. You may lose all or more of your initial investment. Opinions, market data, and recommendations are subject to change at any time. Past Performance is not necessarily indicative of future results.