



Tony Rago's Pre-Market Playbook

- ★ ES WEEKLY PIVOT 6785.75
- ★ NQ WEEKLY PIVOT 25295.25
- ★ Overnight Range
 - ES 24.25
 - NQ 152.50
- ★ **Bulls** need to hold above yest closes **6825 and 25510-- long above these**
- ★ Breakouts are above yesterdays highs **6841 and 25570 - aggressive longs** (await for confirmation with a new high and a retest of the highs from above that holds)
- ★ **Bears** need under overnight lows **short under 6865 and 25700**
- ★ Breakdown is below yest lows **6776 and 25276 -- aggressive shorts** (wait for confirmation with a new low and a retest of the lows from below that hold)
- ★ **RANGEBOUND: 2 Way trade long and shorts will work** to get the day done
- ★ Keep it simple and be patient for confirmation on either side or establish the range if we are going to be rangebound
- ★ Confirm rally continuation with sustained trade over the 30min IB High and likewise
- ★ bearish under the IB Low

ECON:

- 8:30 am *Durable-goods orders

Pre-Market Trading Levels for today

GLOBEX

NQ

★ **HIGH:** 25852.50

★ **LOW:** 25700.00

★ **Bull Case** defend the 25500 to seek the 25612, 25633, 25750, 25812, 25833, 25912, 26000, 26106, 26250, 26312, 26333

★ **Bear Case** seal the 26000 to seek the 25912, 25833, 25812, 25750, 25633, 25612, 25500, 25412, 25333, 25312, 25250, 25106, 25000

★ **Overnight Range - 152.50**

NQ (Prev. Day)

★ High 25570.75

★ Low 25276.00

★ Close 25510.25

NQ (Week Open) 25723.50

S&P 500

★ **HIGH** - 6890.00

★ **LOW** - 6865.75

★ **Bull Case:** defend the 6826 to seek the 6833, 6850, 6862, 6877, 6888, 6900

★ **Bear Case:** seal the 6817 to seek the 6812, 6800, 6888, 6877, 6762, 6750, 6733, 6726, 6712, 6700, 6688, 6677, 6662, 6650, 6633

★ **Overnight Range** - 24.25

ES (Prev Day)

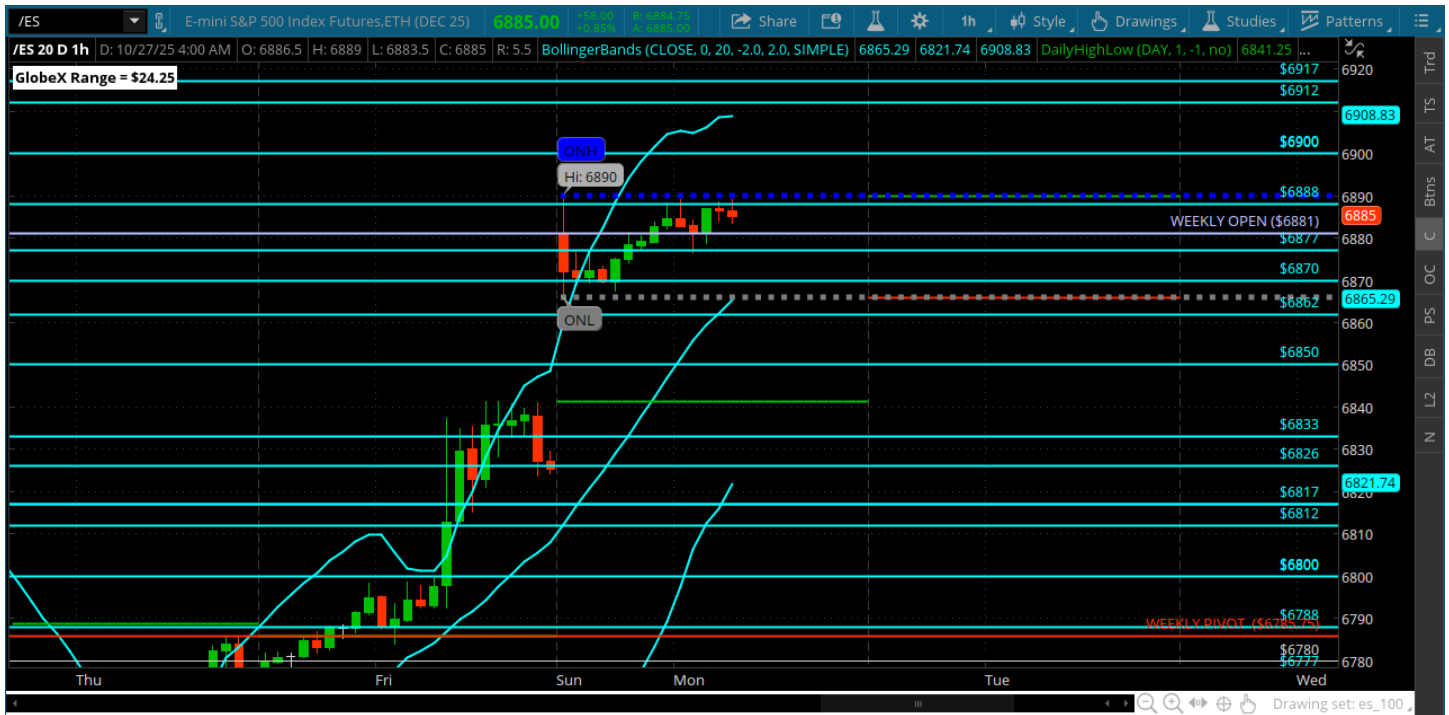
★ High 6841.25

★ Low 6776.50

★ Close 6825.25

ES (Week Open) 6881.00

Monday, October 27, 2025 Pre-Market /ES 1 Hour Chart



- Gap fill is 6826
- Will have to see how we open and need under the 6862 to go get it
- Under weekly open sets it up

Disclaimer:

Disclaimer: Neither TheoTrade or any of its officers, directors, employees, other personnel, representatives, agents or independent contractors is, in such capacities, a licensed financial adviser, registered investment adviser, registered broker-dealer or FINRA|SIPC|NFA-member firm. TheoTrade does not provide investment or financial advice or make investment recommendations. TheoTrade is not in the business of transacting trades, nor does TheoTrade agree to direct your brokerage accounts or give trading advice tailored to your particular situation. Nothing contained in our content constitutes a solicitation, recommendation, promotion, or endorsement of any particular security, other investment product, transaction or investment. Trading Futures, Options on Futures, and retail off-exchange foreign currency transactions involves substantial risk of loss and is not suitable for all investors. You should carefully consider whether trading is suitable for you in light of your circumstances, knowledge, and financial resources. You may lose all or more of your initial investment. Opinions, market data, and recommendations are subject to change at any time. Past Performance is not necessarily indicative of future results.