



Tony Rago's Pre-Market Playbook

★ Overnight Range

- ES 16.75
- NQ 82.00

★ **Bulls** need to hold above yest closes **6914** and **26003**-- long above these

★ Breakouts are above yesterdays highs **6916** and **26013** - **aggressive longs** (await for confirmation with a new high and a retest of the highs from above that holds

★ **Bears** need under overnight lows **short under 6901** and **25943**

★ Breakdown is below yest lows **6875** and **25700** -- **aggressive shorts** (wait for

★ confirmation with a new low and a retest of the lows from below that hold)

★ **RANGEBOUND: 2 Way trade long and shorts will work** to get the day done

★ Keep it simple and be patient for confirmation on either side or establish the range if we are going to be rangebound

★ Confirm rally continuation with sustained trade over the 30min IB High and likewise

★ bearish under the IB Low

ECON:

- 10:00 am Consumer confidence

Pre-Market Trading Levels for today

GLOBEX

NQ

★ **HIGH:** 26025.00

★ **LOW:** 25943.00

★ **Bull Case** defend the 25750 to seek the 25812, 25833, 25912, 26000, 26106, 26250, 26312, 26333

★ **Bear Case** seal the 26106 to seek the 26000, 25912, 25833, 25812, 25750, 25633, 25612, 25500, 25412, 25333, 25312, 25250, 25106, 25000

★ **Overnight Range - 82.00**

NQ (Prev. Day)

★ High 26013.50

★ Low 25700.00

★ Close 26003.75

NQ (Week Open) 25723.50

S&P 500

★ **HIGH** - 6918.25

★ **LOW** - 6901.50

★ **Bull Case:** defend the 6877 to seek the 6888, 6900, 6912, 6917, 6926, 6933, 6942, 6950, 6962

★ **Bear Case:** seal the 6926 to seek the 6917, 6912, 6900, 6888, 6877, 6862, 6850, 6833, 6826, 6812, 6800, 6788, 6777, 6762, 6750, 6733

★ **Overnight Range - 16.75**

ES (Prev Day)

★ High 6916.25

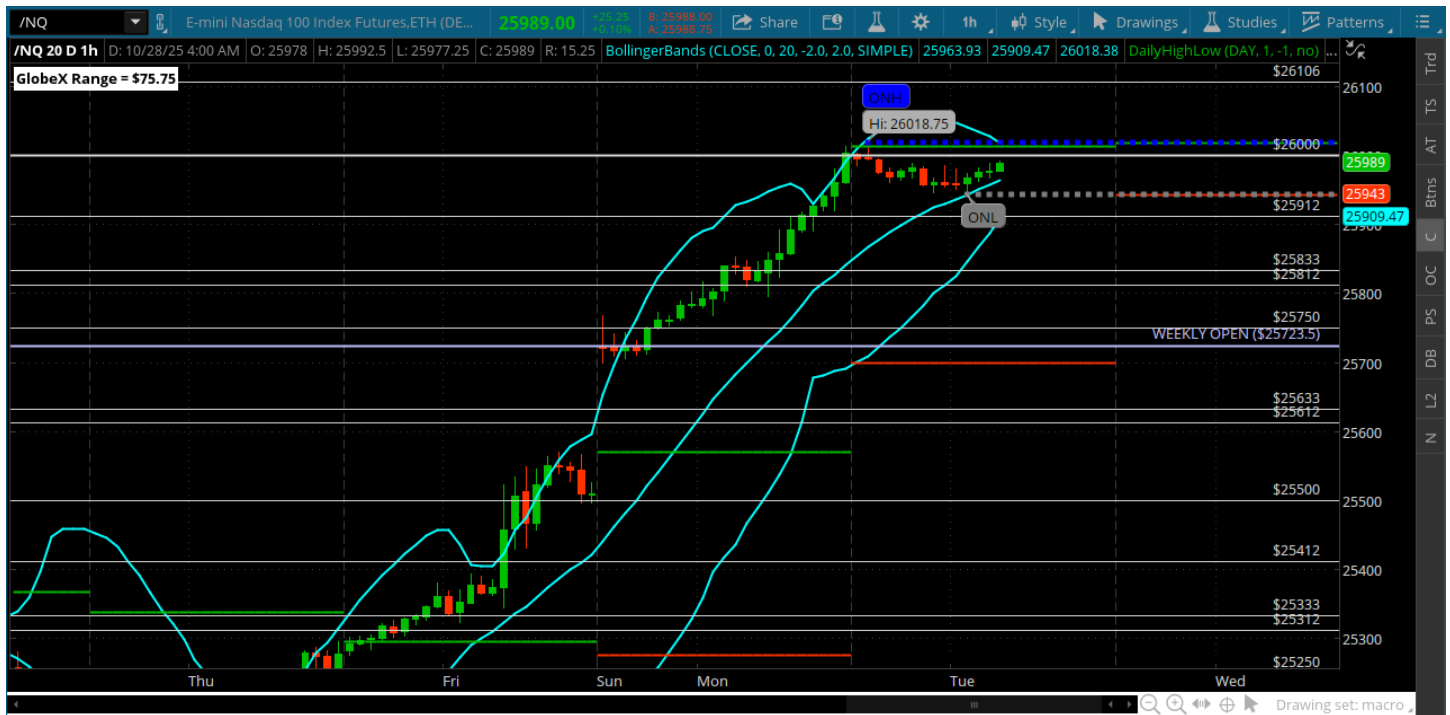
★ Low 6875.75

★ Close 6914.00

ES (Week Open) 6881.00

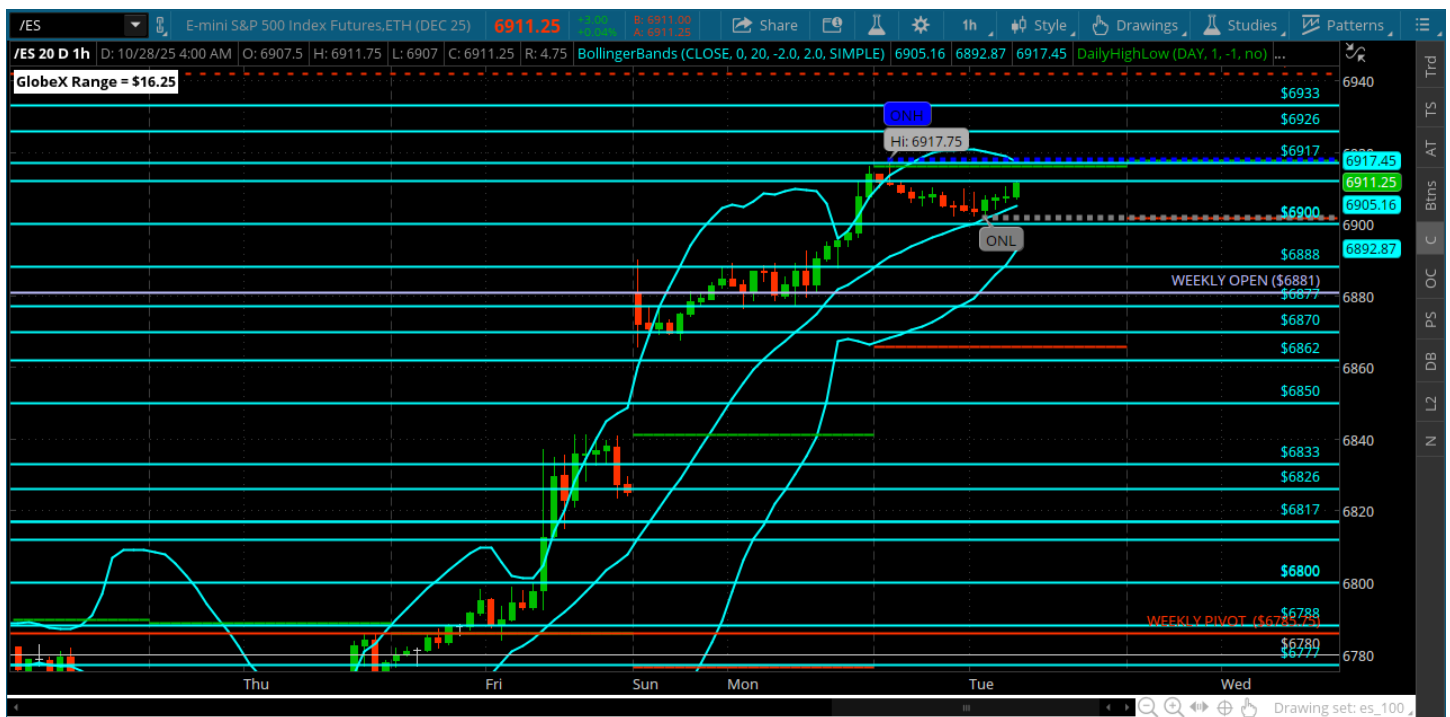
Pre-Market Charts to Watch

Tuesday, October 28, 2025 Pre-Market /NQ 1 Hour Chart



- 26000 prints and is lingering
- We may stay up here until FOMC
- Still would like to see an attempt to fill that gap below but there feels like no one is at home up here
- Will take it as it comes today -- no reason we cannot continue to melt up

Tuesday, October 28, 2025 Pre-Market /ES 1 Hour Chart



- 6900 prints and extends to the 6917
- No attempt at a gap fill yet and we may linger up here until tomorrow's FOMC
- Feels like no one wants to trade it up here
- Trade what you see - no meaningful move down starts until we are under 68
- 77

Disclaimer:

Disclaimer: Neither TheoTrade or any of its officers, directors, employees, other personnel, representatives, agents or independent contractors is, in such capacities, a licensed financial adviser, registered investment adviser, registered broker-dealer or FINRA|SIPC|NFA-member firm. TheoTrade does not provide investment or financial advice or make investment recommendations. TheoTrade is not in the business of transacting trades, nor does TheoTrade agree to direct your brokerage accounts or give trading advice tailored to your particular situation. Nothing contained in our content constitutes a solicitation, recommendation, promotion, or endorsement of any particular security, other investment product, transaction or investment. Trading Futures, Options on Futures, and retail off-exchange foreign currency transactions involves substantial risk of loss and is not suitable for all investors. You should carefully consider whether trading is suitable for you in light of your circumstances, knowledge, and financial resources. You may lose all or more of your initial investment. Opinions, market data, and recommendations are subject to change at any time. Past Performance is not necessarily indicative of future results.