



Tony Rago's Pre-Market Playbook

★ Overnight Range

- ES 24.75
- NQ 145.25
- VIX 16.40

★ **Bulls** need to hold above yest closes **6927 and 26172-- long above these**

★ Breakouts are above yesterdays highs **6944 and 26231 - aggressive longs** (await for confirmation with a new high and a retest of the highs from above that holds

★ **Bears** need under overnight lows **short under 6924 and 26164**

★ Breakdown is below yest lows **6901 and 25943 -- aggressive shorts** (wait for

★ confirmation with a new low and a retest of the lows from below that hold)

★ **RANGEBOUND: 2 Way trade long and shorts will work** to get the day done

★ Keep it simple and be patient for confirmation on either side or establish the range if we are going to be rangebound

★ Confirm rally continuation with sustained trade over the 30min IB High and likewise

★ bearish under the IB Low

ECON:

- 8:30 am *Advanced U.S. trade balance in goods
- 8:30 am *Advanced retail inventories
- 10:00 am Pending home sales
- 2:00 pm FOMC interest-rate decision
- 2:30 pm Fed Chair Powell press conference
- 4:00 pm MSFT, META, GOOGL Report earnings

Pre-Market Trading Levels for today

GLOBEX

NQ

★ **HIGH:** 26309.75

★ **LOW:** 26164.50

★ **Bull Case** defend the 26000 to seek the 26106, 26250, 26312, 26333, 26412, 26500, 26612, 266333, 26750

★ **Bear Case** seal the 26333 to seek the 26312, 26250, 26106, 26000, 25912, 25833, 25812, 25750, 25633, 25612, 25500, 25412, 25333, 25312, 25250, 25106, 25000

★ **Overnight Range - 145.25**

NQ (Prev. Day)

★ High 26231.50

★ Low 25943.00

★ Close 26172.50

NQ (Week Open) 25723.50

S&P 500

★ **HIGH** - 6949.25

★ **LOW** - 6924.50

★ **Bull Case:** defend the 6900 to seek the 6912, 6917, 6926, 6933, 6942, 6950, 6962

★ **Bear Case:** seal the 6950 to seek the 6942, 6933, 6926, 6917, 6912, 6900, 6888, 6877, 6862, 6850, 6833, 6826, 6812, 6800, 6788, 6777, 6762, 6750, 6733

★ **Overnight Range** - 24.75

ES (Prev Day)

★ High 6944.75

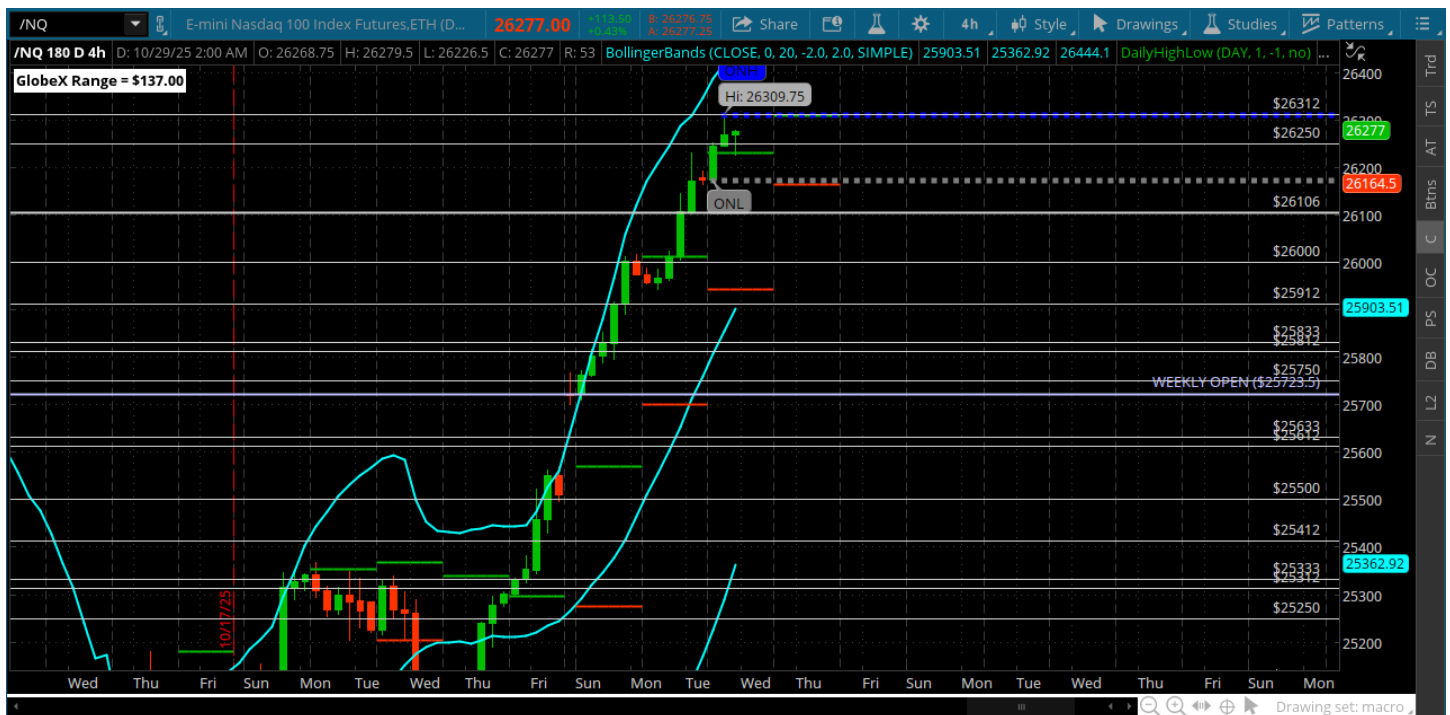
★ Low 6901.50

★ Close 6927.50

ES (Week Open) 6881.00

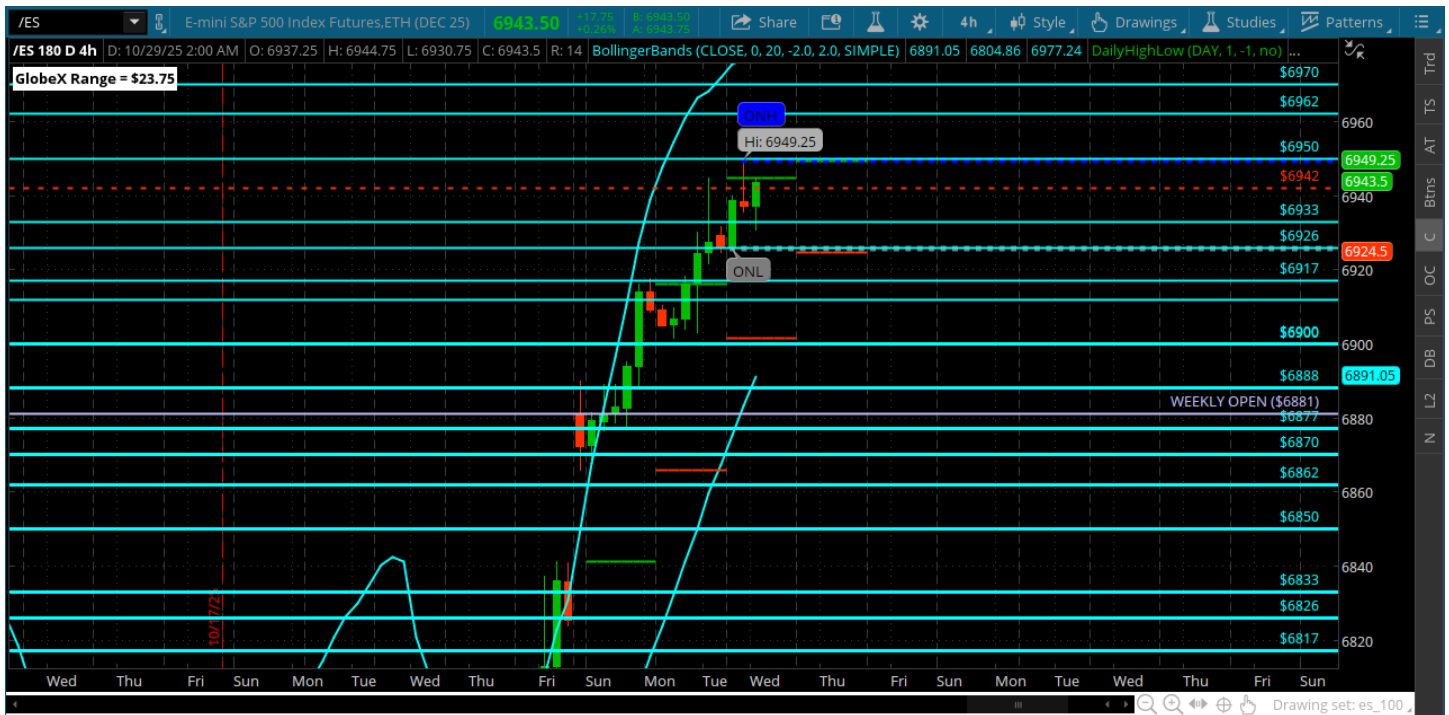
Pre-Market Charts to Watch

Wednesday, October 29, 2025 Pre-Market /NQ 1 Hour Chart



- FED DAY - melt up continues with no let up
- Has been tradeable as long as you remain objective
- Today is all about FED decision and fallout

Wednesday, October 29, 2025 Pre-Market /ES 1 Hour Chart



- FED DAY -- melt up continues
- Could get a 7k test today
- The Sunday night gap grows more ominous by the day

Disclaimer:

Disclaimer: Neither TheoTrade or any of its officers, directors, employees, other personnel, representatives, agents or independent contractors is, in such capacities, a licensed financial adviser, registered investment adviser, registered broker-dealer or FINRA|SIPC|NFA-member firm. TheoTrade does not provide investment or financial advice or make investment recommendations. TheoTrade is not in the business of transacting trades, nor does TheoTrade agree to direct your brokerage accounts or give trading advice tailored to your particular situation. Nothing contained in our content constitutes a solicitation, recommendation, promotion, or endorsement of any particular security, other investment product, transaction or investment. Trading Futures, Options on Futures, and retail off-exchange foreign currency transactions involves substantial risk of loss and is not suitable for all investors. You should carefully consider whether trading is suitable for you in light of your circumstances, knowledge, and financial resources. You may lose all or more of your initial investment. Opinions, market data, and recommendations are subject to change at any time. Past Performance is not necessarily indicative of future results.