



Tony Rago's Pre-Market Playbook

★ Overnight Range

- ES 30.50
- NQ 146.75
- VIX 16.23

★ **Bulls** need to hold above yest closes **6894 and 26149-- long above these**

★ Breakouts are above yesterday's highs **6953 and 26399 - aggressive longs** (await for confirmation with a new high and a retest of the highs from above that holds)

★ **Bears** need under overnight lows **short under 6888 and 26127**

★ Breakdown is below yest lows **6851 and 25853 -- aggressive shorts** (wait for

★ confirmation with a new low and a retest of the lows from below that hold)

★ **RANGEBOUND: 2 Way trade long and shorts will work** to get the day done

★ Keep it simple and be patient for confirmation on either side or establish the range if we are going to be rangebound

★ Confirm rally continuation with sustained trade over the 30min IB High and likewise

★ bearish under the IB Low

ECON:

- 8:30 am *Consumer spending
- 8:30 am *PCE index
- 9:45 am Chicago Business Barometer (PMI)
- 9:30 am Dallas Fed President Lorie Logan welcoming remarks
- 12:00 pm Cleveland Fed President Hammack and Atlanta Fed President Bostic speak

Pre-Market Trading Levels for today

GLOBEX

NQ

★ **HIGH:** 26274.00

★ **LOW:** 26127.25

★ **Bull Case** defend the 26106 to seek the 26250, 26312, 26333, 26412, 26500, 26612, 266333, 26750

★ **Bear Case** seal the 26333 to seek the 26312, 26250, 26106, 26000, 25912, 25833, 25812, 25750, 25633, 25612, 25500, 25412, 25333, 25312, 25250, 25106, 25000

★ **Overnight Range - 146.75**

NQ (Prev. Day)

★ High 26399.00

★ Low 25853.00

★ Close 26149.25

NQ (Week Open) 25723.50

S&P 500

★ **HIGH** - 6918.50

★ **LOW** - 6888.00

★ **Bull Case:** defend the 6900 to seek the 6912, 6917, 6926, 6933, 6942, 6950, 6962

★ **Bear Case:** seal the 6950 to seek the 6942, 6933, 6926, 6917, 6912, 6900, 6888, 6877, 6862, 6850, 6833, 6826, 6812, 6800, 6788, 6777, 6762, 6750, 6733

★ **Overnight Range** - 30.50

ES (Prev Day)

★ High 6953.75

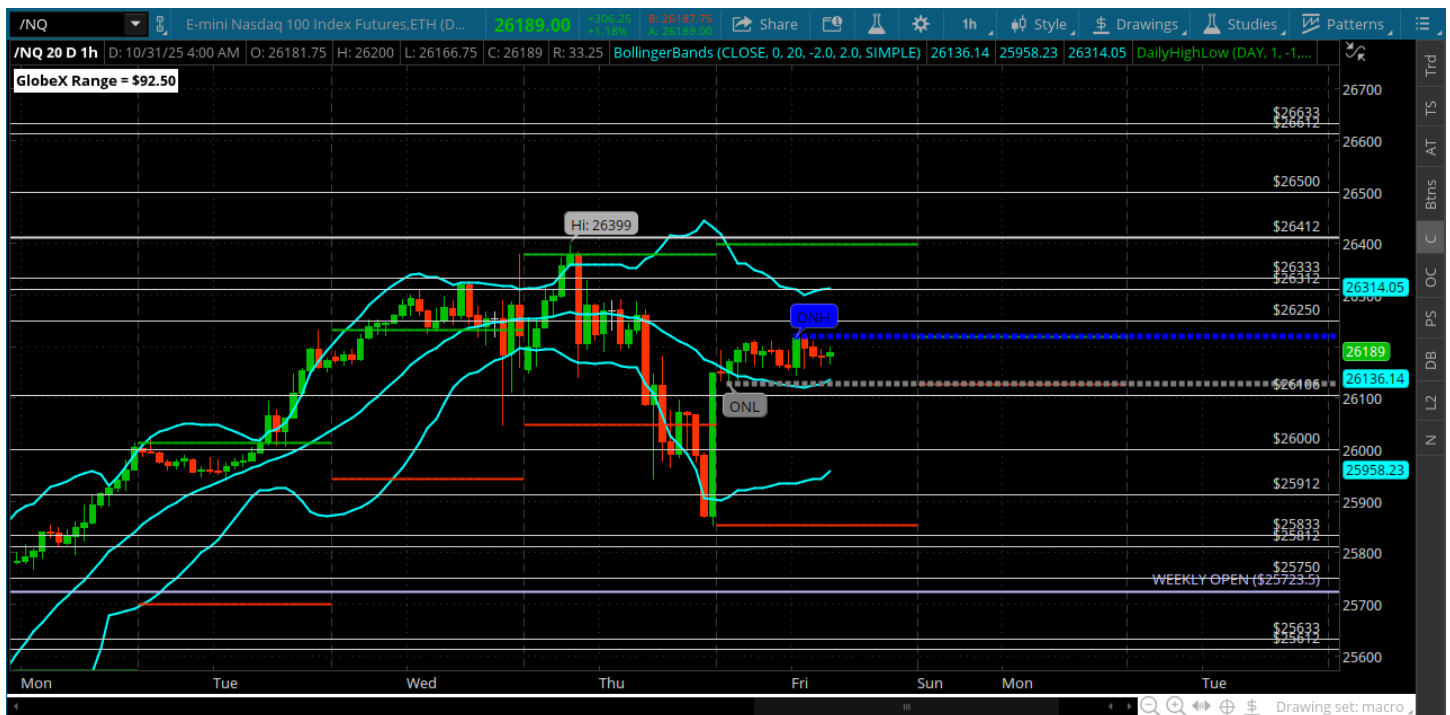
★ Low 6851.00

★ Close 6894.00

ES (Week Open) 6881.00

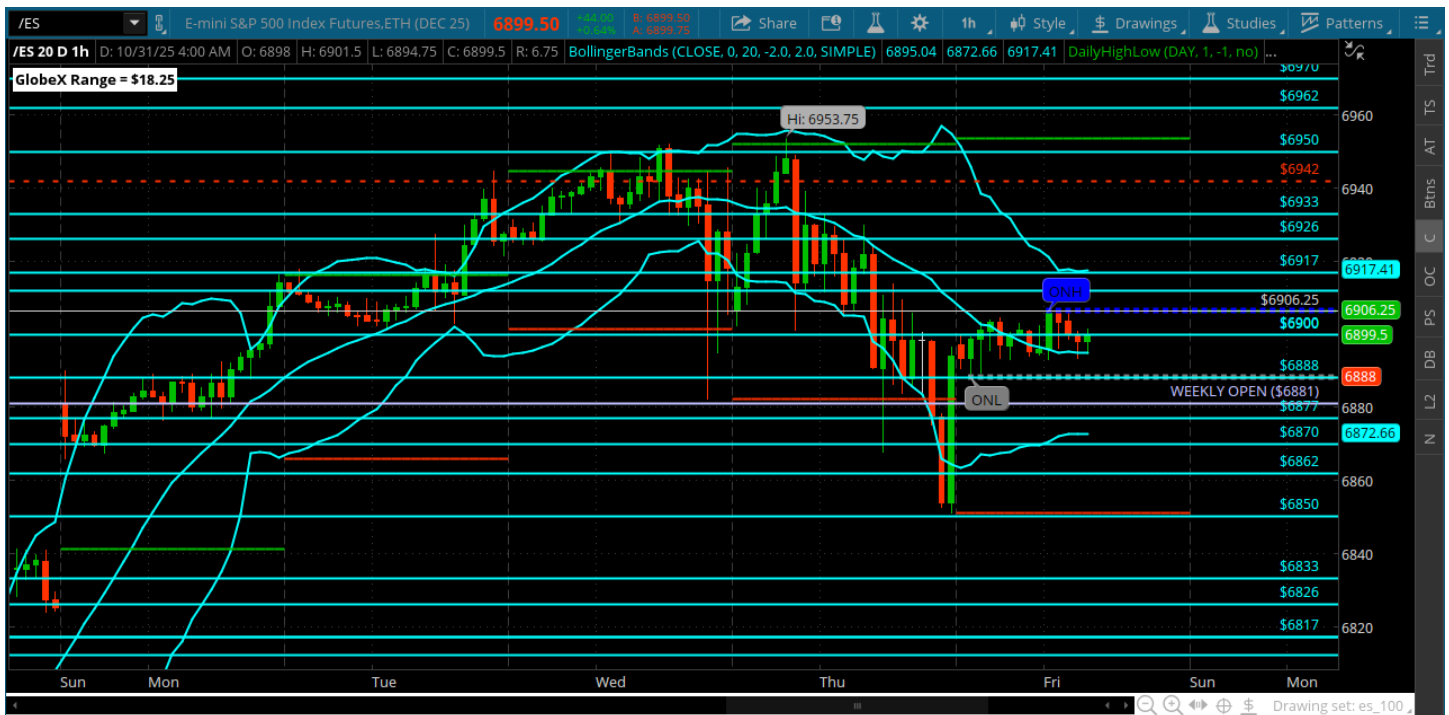
Pre-Market Charts to Watch

Friday, October 31, 2025 Pre-Market /NQ 1 Hour Chart



- Nice push down into the 25912 and leaves the 25833 open
- Saved by AMZN and AAPL earnings
- Today could go either way -- these two are heavily weighted so depending on how retail reacts to the earnings we could reach for the highs or breakdown under yesterdays lows and go for a gap fill below

Friday, October 31, 2025 Pre-Market /ES 1 Hour Chart



- Nice push down into the 6850 - didnt actually print the 6850 it remain unfinished business
- Price needs under the weekly open to go get it
- All about the 6900 here -- bulls need to get and stay above and bears need to knock it down under the weekly open
- Still a gap fill below
-

Disclaimer:

Disclaimer: Neither TheoTrade or any of its officers, directors, employees, other personnel, representatives, agents or independent contractors is, in such capacities, a licensed financial adviser, registered investment adviser, registered broker-dealer or FINRA|SIPC|NFA-member firm. TheoTrade does not provide investment or financial advice or make investment recommendations. TheoTrade is not in the business of transacting trades, nor does TheoTrade agree to direct your brokerage accounts or give trading advice tailored to your particular situation. Nothing contained in our content constitutes a solicitation, recommendation, promotion, or endorsement of any particular security, other investment product, transaction or investment. Trading Futures, Options on Futures, and retail off-exchange foreign currency transactions involves substantial risk of loss and is not suitable for all investors. You should carefully consider whether trading is suitable for you in light of your circumstances, knowledge, and financial resources. You may lose all or more of your initial investment. Opinions, market data, and recommendations are subject to change at any time. Past Performance is not necessarily indicative of future results.