



Tony Rago's Pre-Market Playbook

- ★ ES MONTHLY PIVOT 6788.75
- ★ NQ MONTHLY PIVOT 25513.50
- ★ ES WEEKLY PIVOT 6889.83
- ★ NQ WEEKLY PIVOT 26027.33
- ★ Overnight Range
 - ES 29.75
 - NQ 169.25
 - VIX 17.47
- ★ **Bulls** need to hold above yest closes **6872 and 25983-- long above these**
- ★ Breakouts are above yesterday's highs **6918 and 26274 - aggressive longs** (await for confirmation with a new high and a retest of the highs from above that holds)
- ★ **Bears** need under overnight lows **short under 6873 and 26012**
- ★ Breakdown is below yest lows **6843 and 25888 -- aggressive shorts** (wait for confirmation with a new low and a retest of the lows from below that hold)
- ★ **RANGEBOUND: 2 Way trade long and shorts will work** to get the day done
- ★ Keep it simple and be patient for confirmation on either side or establish the range if we are going to be rangebound
- ★ Confirm rally continuation with sustained trade over the 30min IB High and likewise
- ★ bearish under the IB Low

ECON:

- 8:30 am *Durable-goods orders

Pre-Market Trading Levels for today

GLOBEX

NQ

★ **HIGH:** 26182.00

★ **LOW:** 26012.75

★ **Bull Case** defend the 26106 to seek the 26250, 26312, 26333, 26412, 26500, 26612, 266333, 26750

★ **Bear Case** seal the 26333 to seek the 26312, 26250, 26106, 26000, 25912, 25833, 25812, 25750, 25633, 25612, 25500, 25412, 25333, 25312, 25250, 25106, 25000

★ **Overnight Range - 169.25**

NQ (Prev. Day)

★ High 26274.00

★ Low 25888.75

★ Close 25983.00

NQ (Week Open) 26028.25

S&P 500

★ **HIGH** - 6903.00

★ **LOW** - 6873.25

★ **Bull Case:** defend the 6870 to seek the 6877, 6888, 6900, 6912, 6917, 6926, 6933, 6942, 6950, 6962

★ **Bear Case:** seal the 6950 to seek the 6942, 6933, 6926, 6917, 6912, 6900, 6888, 6877, 6862, 6850, 6833, 6826, 6812, 6800, 6788, 6777, 6762, 6750, 6733

★ **Overnight Range** - 29.75

ES (Prev Day)

★ High 6918.50

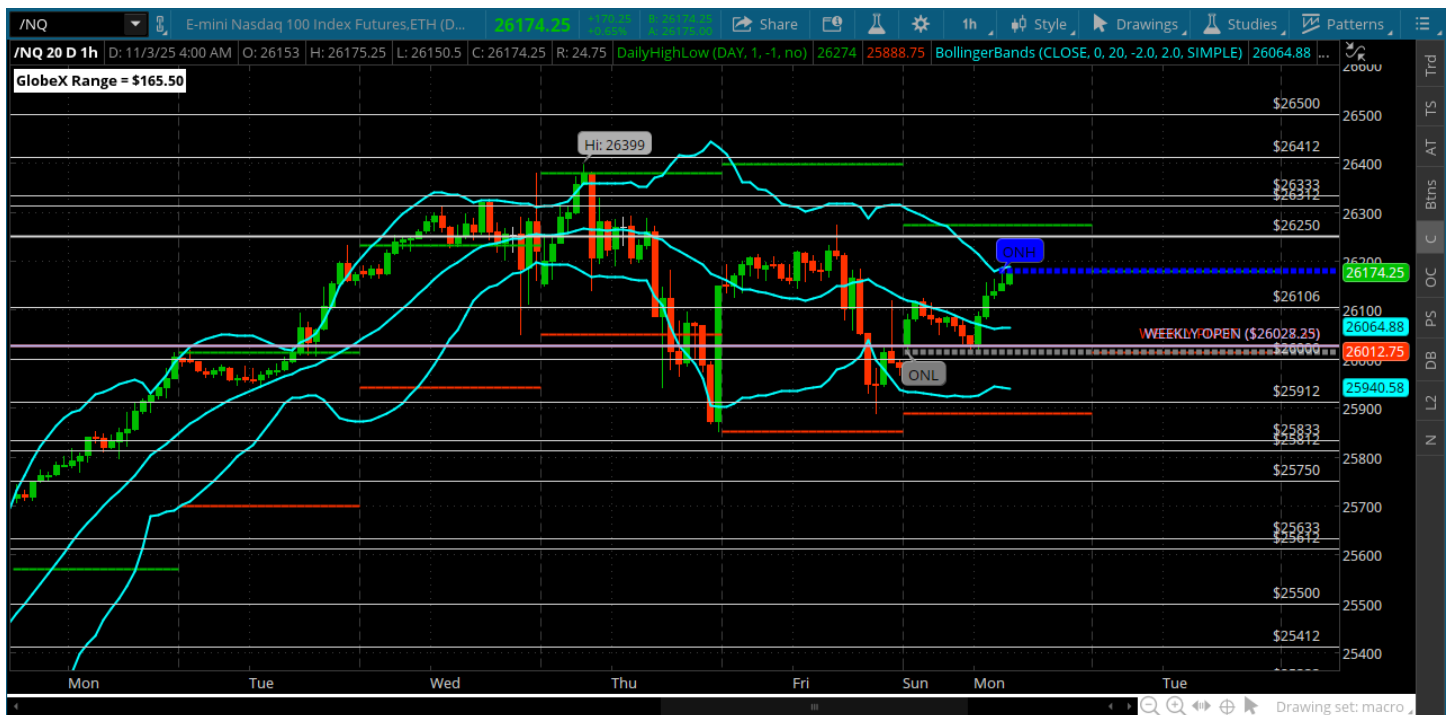
★ Low 6843.50

★ Close 6872.25

ES (Week Open) 6878.00

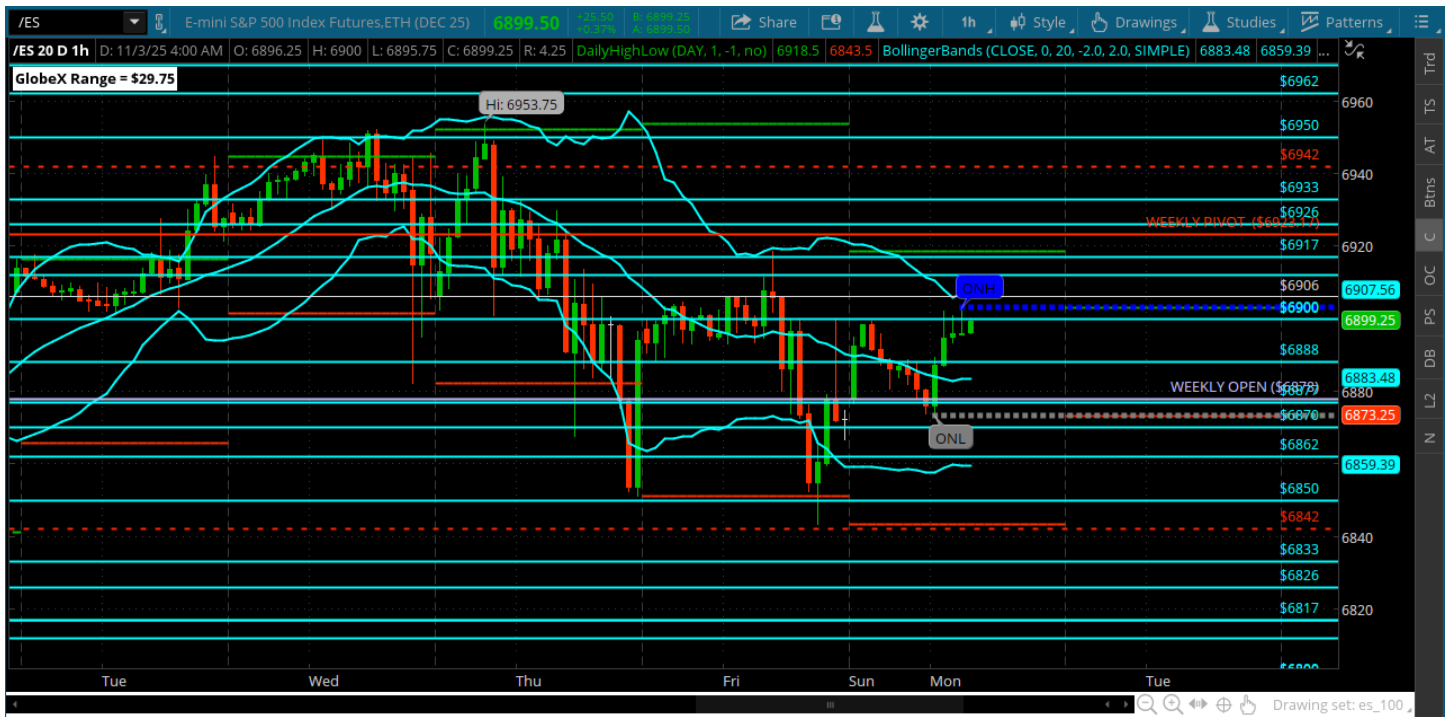
Pre-Market Charts to Watch

Monday, November 3, 2025 Pre-Market /NQ 1 Hour Chart



- Weekly open basically at the 26000 roundy so will be watching for backtest of that
- Under is bearish and over is bullish -- bears need to take out Fridays lows and get under the 25912
- Bulls need over Fridays highs and over the 26250

Monday, November 3, 2025 Pre-Market /ES 1 Hour Chart



- Week opens on the 6877 - would like to see a backtest of that in RTH today
- Bears need to hold the 6900 to go get it
- Under that bears need to target Fridays lows
- Bulls want to get and stay above the 6900 and go after Fridays highs 6918

Disclaimer:

Disclaimer: Neither TheoTrade or any of its officers, directors, employees, other personnel, representatives, agents or independent contractors is, in such capacities, a licensed financial adviser, registered investment adviser, registered broker-dealer or FINRA|SIPC|NFA-member firm. TheoTrade does not provide investment or financial advice or make investment recommendations. TheoTrade is not in the business of transacting trades, nor does TheoTrade agree to direct your brokerage accounts or give trading advice tailored to your particular situation. Nothing contained in our content constitutes a solicitation, recommendation, promotion, or endorsement of any particular security, other investment product, transaction or investment. Trading Futures, Options on Futures, and retail off-exchange foreign currency transactions involves substantial risk of loss and is not suitable for all investors. You should carefully consider whether trading is suitable for you in light of your circumstances, knowledge, and financial resources. You may lose all or more of your initial investment. Opinions, market data, and recommendations are subject to change at any time. Past Performance is not necessarily indicative of future results.