



Tony Rago's Pre-Market Playbook

★ Overnight Range

- ES 97.75
- NQ 459.50
- VIX 19.53

★ **Bulls** need to hold above yest closes **6884** and **26109**-- **long above these**

★ Breakouts are above yesterday's highs **6909** and **26266** - **aggressive longs** (await for confirmation with a new high and a retest of the highs from above that holds)

★ **Bears** need under overnight lows **short under 6786** and **25645**

★ Breakdown is below yest lows **6849** and **26012** -- **aggressive shorts** (wait for

★ confirmation with a new low and a retest of the lows from below that hold)

★ **RANGEBOUND: 2 Way trade long and shorts will work** to get the day done

★ Keep it simple and be patient for confirmation on either side or establish the range if we are going to be rangebound

★ Confirm rally continuation with sustained trade over the 30min IB High and likewise

★ bearish under the IB Low

ECON:

- 8:30 am *U.S. trade deficit
- 10:00 am *Factory orders
- 10:00 am *Job openings

Pre-Market Trading Levels for today

GLOBEX

NQ

★ **HIGH:** 26104.00

★ **LOW:** 25645.00

★ **Bull Case** defend the 25750 to seek the 25812, 25833, 25912, 26000, 26106, 26250, 26312, 26333, 26412, 26500, 26612, 266333, 26750

★ **Bear Case** seal the 26000 to seek the 25912, 25833, 25812, 25750, 25633, 25612, 25500, 25412, 25333, 25312, 25250, 25106, 25000

★ **Overnight Range - 459.50**

NQ (Prev. Day)

★ High 26266.00

★ Low 26012.75

★ Close 26109.50

NQ (Week Open) 26028.25

S&P 500

★ **HIGH** - 6884.00

★ **LOW** - 6786.25

★ **Bull Case:** defend the 6800 to seek the 6812, 6817, 6826, 6833, 6850, 6862, 6870, 6877, 6888, 6900, 6912, 6917, 6926, 6933, 6942, 6950, 6962

★ **Bear Case:** seal the 6877 to seek the 6862, 6850, 6833, 6826, 6812, 6800, 6788, 6777, 6762, 6750, 6733

★ **Overnight Range** - 97.75

ES (Prev Day)

★ High 6909.50

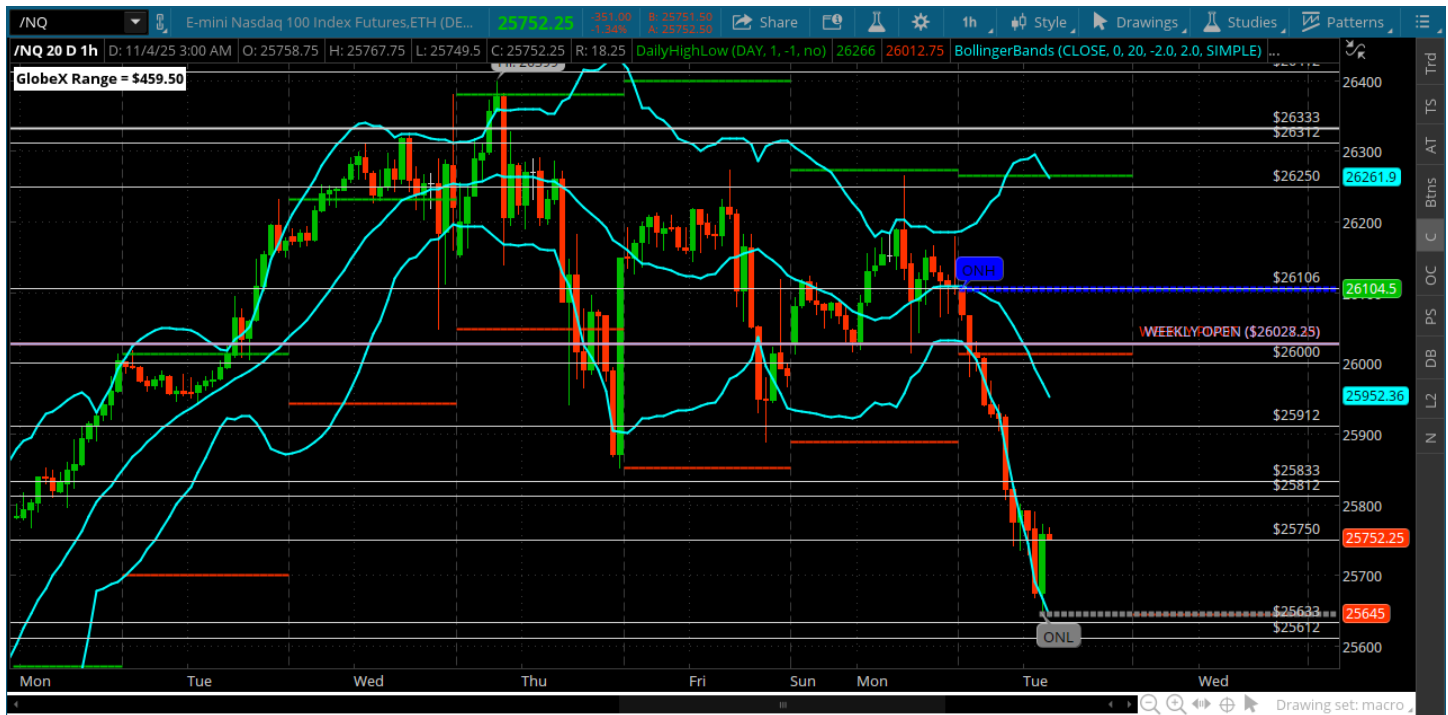
★ Low 6849.50

★ Close 6884.00

ES (Week Open) 6878.00

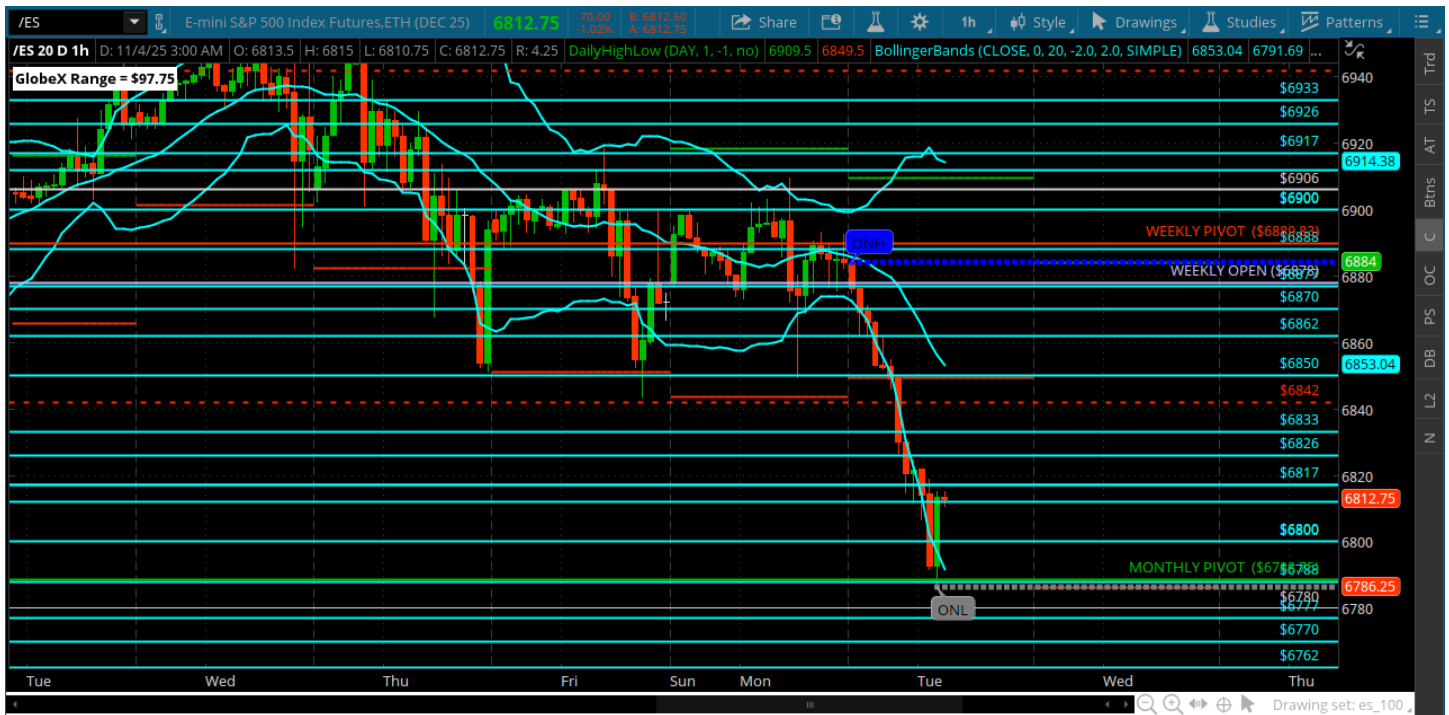
Pre-Market Charts to Watch

Tuesday, November 4, 2025 Pre-Market /NQ 1 Hour Chart



- Bulls couldnt hold the 26106 and weekly open went resistance overnight
- Too close to the gap fill below at 25526 not to go get it now
- The 25812/833 needs to hold on a pop to go get it imo
- The weakness in the ES is driving this so keep an eye on ES

Tuesday, November 4, 2025 Pre-Market /ES 1 Hour Chart



- Close below weekly pivot an overall weakness gave the bears the ball in the overnight and they have filled that gap at 6826 now
- Perfect test of Monthly Pivot so far
- Will be interesting to see if this turns into a dip buy -- bulls need to defend the 6800 here and move back to the 6850

Disclaimer:

Disclaimer: Neither TheoTrade or any of its officers, directors, employees, other personnel, representatives, agents or independent contractors is, in such capacities, a licensed financial adviser, registered investment adviser, registered broker-dealer or FINRA|SIPC|NFA-member firm. TheoTrade does not provide investment or financial advice or make investment recommendations. TheoTrade is not in the business of transacting trades, nor does TheoTrade agree to direct your brokerage accounts or give trading advice tailored to your particular situation. Nothing contained in our content constitutes a solicitation, recommendation, promotion, or endorsement of any particular security, other investment product, transaction or investment. Trading Futures, Options on Futures, and retail off-exchange foreign currency transactions involves substantial risk of loss and is not suitable for all investors. You should carefully consider whether trading is suitable for you in light of your circumstances, knowledge, and financial resources. You may lose all or more of your initial investment. Opinions, market data, and recommendations are subject to change at any time. Past Performance is not necessarily indicative of future results.