



## *Tony Rago's Pre-Market Playbook*

---

### ★ Overnight Range

- ES 58.00
- NQ 292.25
- VIX 19.66

★ **Bulls** need to hold above yest closes **6806 and 25577-- long above these**

★ Breakouts are above yesterday's highs **6884 and 26104 - aggressive longs** (await for confirmation with a new high and a retest of the highs from above that holds)

★ **Bears** need under overnight lows **short under 6748 and 25282**

★ Breakdown is below yest lows **6786 and 25522 -- aggressive shorts** (wait for

★ confirmation with a new low and a retest of the lows from below that hold)

★ **RANGEBOUND: 2 Way trade long and shorts will work** to get the day done

★ Keep it simple and be patient for confirmation on either side or establish the range if we are going to be rangebound

★ Confirm rally continuation with sustained trade over the 30min IB High and likewise

★ bearish under the IB Low

### ECON:

- 8:15 am ADP employment
- 9:45 am S&P final U.S. services PMI
- 10:00 am ISM services

## *Pre-Market Trading Levels for today*

---

### **GLOBEX**

#### **NQ**

★ **HIGH:** 25588.50

★ **LOW:** 25282.00

★ **Bull Case** defend the 25412 to seek the 25500, 25612, 25633, 25750, 25812, 25833, 25912, 26000, 26106, 26250, 26312, 26333, 26412, 26500, 26612, 266333, 26750

★ **Bear Case** seal the 25833 to seek the 25812, 25750, 25633, 25612, 25500, 25412, 25333, 25312, 25250, 25106, 25000

★ **Overnight Range - 306.50**

#### **NQ (Prev. Day)**

★ High 26104.50

★ Low 25522.75

★ Close 25577.00

**NQ (Week Open) 26028.25**

## S&P 500

★ **HIGH** - 6807.00

★ **LOW** - 6748.50

★ **Bull Case:** defend the 6750 to seek the 6762,6770, 6777, 6788, 6800, 6812, 6817, 6826, 6833, 6850, 6862, 6870, 6877, 6888, 6900

★ **Bear Case:** seal the 6826 to seek the 6812, 6800, 6788, 6777, 6762, 6750, 6733, 6726, 6717, 6712, 6700

★ **Overnight Range** - 58.50

### ES (Prev Day)

★ High 6884.00

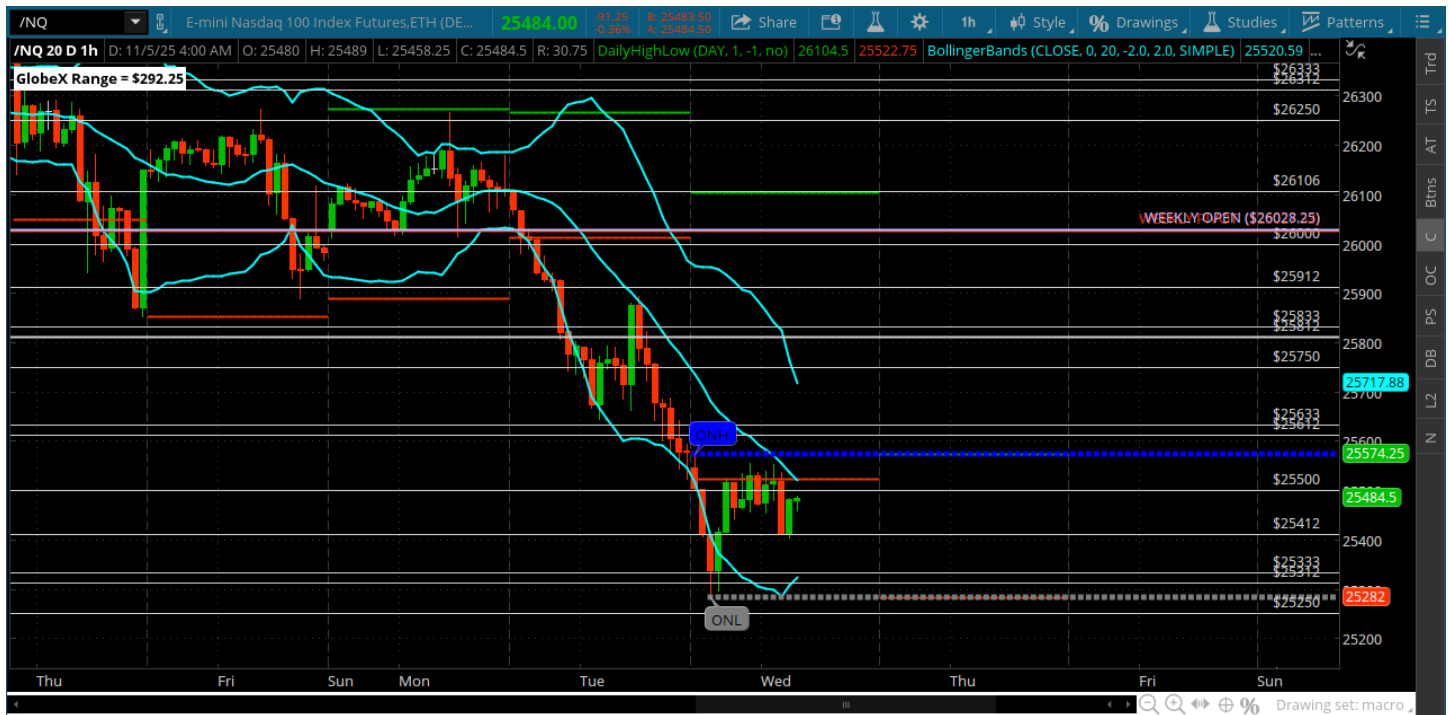
★ Low 6786.25

★ Close 6806.25

**ES (Week Open) 6878.00**

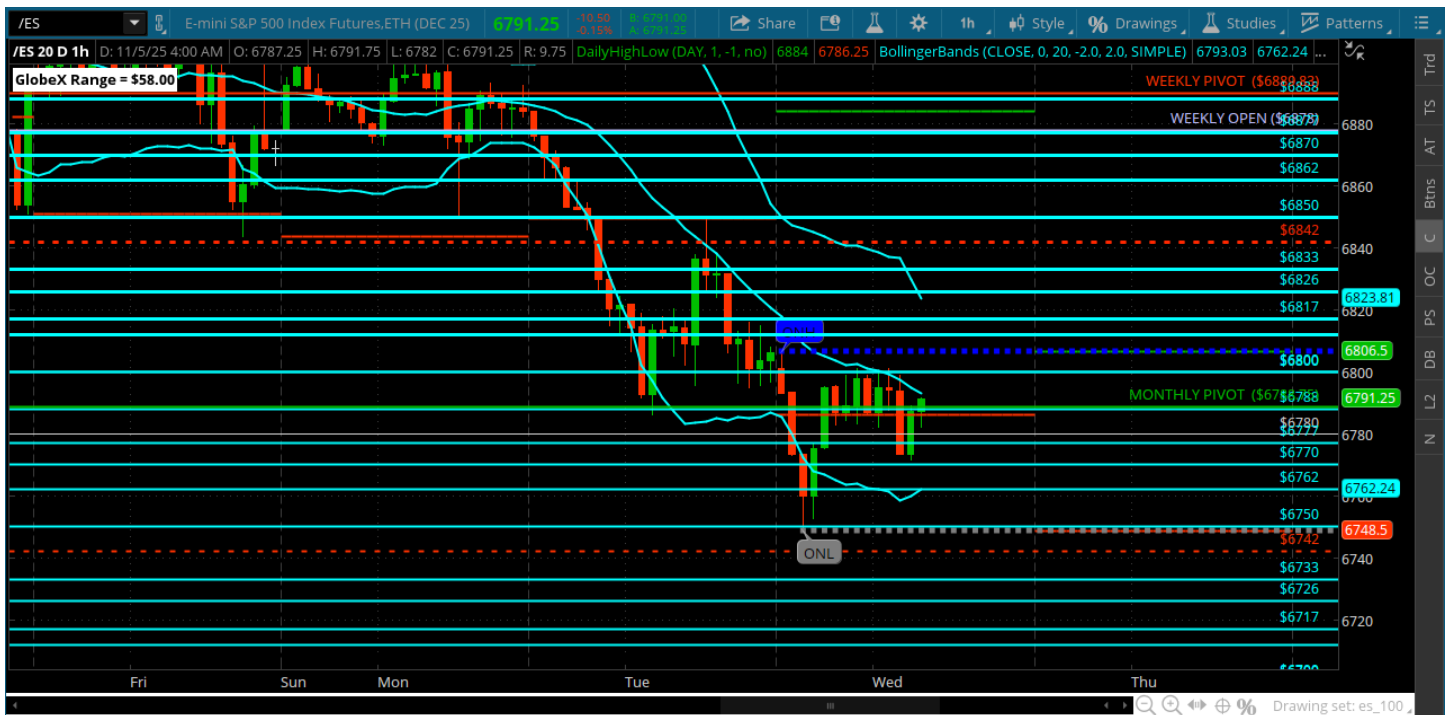
# Pre-Market Charts to Watch

## Wednesday, November 5, 2025 Pre-Market /NQ 1 Hour Chart



- Gap is filled at 25526 and a test of the 25312 overnight
- Bulls have not gotten any traction on these bounces -- all have been sold
- They need above the 25612 and the midband
- Bears just need to keep selling these pops and making new lows
- We are at the halfway point on the daily at 25409 as well - so bulls have a shot over the 25412

## Wednesday, November 5, 2025 Pre-Market /ES 1 Hour Chart



- Big midband resistance and nice execution from the bears
- This is a dip that has been getting bought so bulls need to get and stay above the 6800 and keep the midband as support
- Bears just need to keep the midband as resistance and keep pushing
- We are 3% off the all time highs
-

*Disclaimer:*

Disclaimer: Neither TheoTrade or any of its officers, directors, employees, other personnel, representatives, agents or independent contractors is, in such capacities, a licensed financial adviser, registered investment adviser, registered broker-dealer or FINRA|SIPC|NFA-member firm. TheoTrade does not provide investment or financial advice or make investment recommendations. TheoTrade is not in the business of transacting trades, nor does TheoTrade agree to direct your brokerage accounts or give trading advice tailored to your particular situation. Nothing contained in our content constitutes a solicitation, recommendation, promotion, or endorsement of any particular security, other investment product, transaction or investment. Trading Futures, Options on Futures, and retail off-exchange foreign currency transactions involves substantial risk of loss and is not suitable for all investors. You should carefully consider whether trading is suitable for you in light of your circumstances, knowledge, and financial resources. You may lose all or more of your initial investment. Opinions, market data, and recommendations are subject to change at any time. Past Performance is not necessarily indicative of future results.