



Tony Rago's Pre-Market Playbook

★ Overnight Range

- ES 39.50
- NQ 205.00
- VIX 17.83

★ **Bulls** need to hold above yest closes **6827 and 25729-- long above these**

★ Breakouts are above yesterday's highs **6857 and 25880 - aggressive longs** (await for confirmation with a new high and a retest of the highs from above that holds)

★ **Bears** need under overnight lows **short under 6804 and 25617**

★ Breakdown is below yest lows **6748 and 25282 -- aggressive shorts** (wait for

★ confirmation with a new low and a retest of the lows from below that hold)

★ **RANGEBOUND: 2 Way trade long and shorts will work** to get the day done

★ Keep it simple and be patient for confirmation on either side or establish the range if we are going to be rangebound

★ Confirm rally continuation with sustained trade over the 30min IB High and likewise

★ bearish under the IB Low

ECON:

- 8:30 am *Initial jobless claims
- 8:30 am *U.S. productivity
- 10:00 am *Wholesale inventories
- 11:00 am Fed governor Michael Barr speech
- 11:00 am New York Fed President Williams speaks
- 12:00 pm Cleveland Fed President Beth Hammack speech
- 3:30 pm Fed governor Christopher Waller speech

Pre-Market Trading Levels for today

GLOBEX

NQ

★ **HIGH:** 25822.25

★ **LOW:** 25617.25

★ **Bull Case** defend the 25500 to seek the 25612, 25633, 25750, 25812, 25833, 25912, 26000, 26106, 26250, 26312, 26333, 26412, 26500, 26612, 266333, 26750

★ **Bear Case** seal the 25833 to seek the 25812, 25750, 25633, 25612, 25500, 25412, 25333, 25312, 25250, 25106, 25000

★ **Overnight Range - 205.00**

NQ (Prev. Day)

★ High 25880.00

★ Low 25282.00

★ Close 25729.00

NQ (Week Open) 26028.25

S&P 500

★ **HIGH** - 6843.50

★ **LOW** - 6804.00

★ **Bull Case:** defend the 6800 to seek the 6800, 6812, 6817, 6826, 6833, 6850, 6862, 6870, 6877, 6888, 6900

★ **Bear Case:** seal the 6862 to seek the 6850, 6833, 6826, 6817, 6812, 6800, 6788, 6777, 6762, 6750, 6733, 6726, 6717, 6712, 6700

★ **Overnight Range** - 39.50

ES (Prev Day)

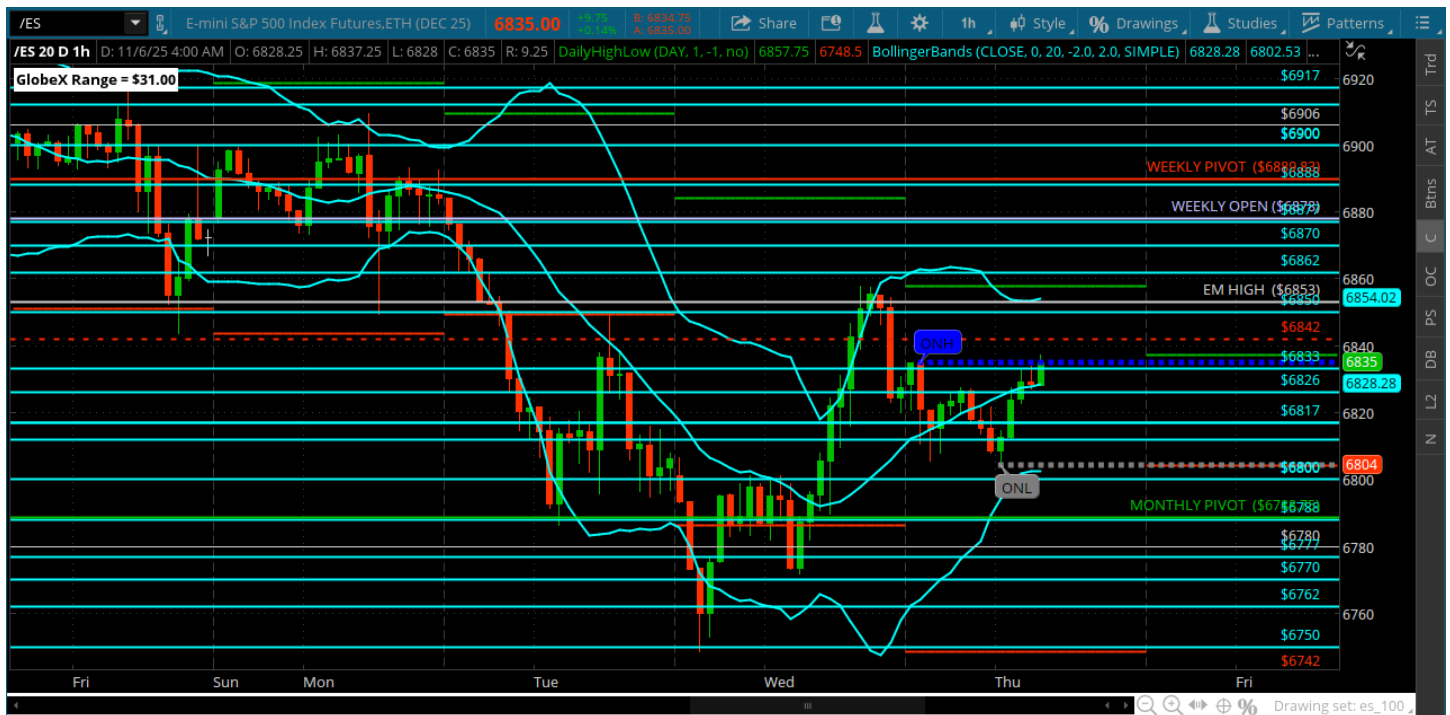
★ High 6857.75

★ Low 6748.50

★ Close 6827.50

ES (Week Open) 6878.00

Thursday, November 6, 2025 Pre-Market /ES 1 Hour Chart



- Nice rally yesterday with a perfect halfway back overnight
- Bulls need to defend the 6800 and go after yesterdays highs and the 6862, weekly open
- Bears need under the 6800 and 6788 to get the ball back -- end of day fades need to take out prev days lows

Disclaimer:

Disclaimer: Neither TheoTrade or any of its officers, directors, employees, other personnel, representatives, agents or independent contractors is, in such capacities, a licensed financial adviser, registered investment adviser, registered broker-dealer or FINRA|SIPC|NFA-member firm. TheoTrade does not provide investment or financial advice or make investment recommendations. TheoTrade is not in the business of transacting trades, nor does TheoTrade agree to direct your brokerage accounts or give trading advice tailored to your particular situation. Nothing contained in our content constitutes a solicitation, recommendation, promotion, or endorsement of any particular security, other investment product, transaction or investment. Trading Futures, Options on Futures, and retail off-exchange foreign currency transactions involves substantial risk of loss and is not suitable for all investors. You should carefully consider whether trading is suitable for you in light of your circumstances, knowledge, and financial resources. You may lose all or more of your initial investment. Opinions, market data, and recommendations are subject to change at any time. Past Performance is not necessarily indicative of future results.