



## *Tony Rago's Pre-Market Playbook*

### ★ Overnight Range

- ES 59.75
- NQ 293.00
- VIX 20.52

★ **Bulls** need to hold above yest closes **6764** and **25311**-- **long above these**

★ Breakouts are above yesterday's highs **6843** and **25822** - **aggressive longs** (await for confirmation with a new high and a retest of the highs from above that holds

★ **Bears** need under overnight lows **short under 6815** and **25084**

★ Breakdown is below yest lows **6733** and **25197** -- **aggressive shorts** (wait for

★ confirmation with a new low and a retest of the lows from below that hold)

★ **RANGEBOUND: 2 Way trade long and shorts will work** to get the day done

★ Keep it simple and be patient for confirmation on either side or establish the range if we are going to be rangebound

★ Confirm rally continuation with sustained trade over the 30min IB High and likewise

★ bearish under the IB Low

### ECON:

- 8:30 am      \*U.S. employment report Oct.
- 10:00 am    UMich Consumer sentiment
- 3:00 pm      Consumer credit
- 3:00 pm      Fed governor Stephen Miran speech

## *Pre-Market Trading Levels for today*

---

### **GLOBEX**

#### **NQ**

★ **HIGH:** 25357.75

★ **LOW:** 25061.75

★ **Bull Case** defend the 25106 to seek the 25250, 25312, 25333, 25412, 25500, 25612, 25633, 25750, 25812, 25833, 25912, 26000

★ **Bear Case** seal the 25500 to seek the 25412, 25333, 25312, 25250, 25106, 25000, 24912, 24833, 24812, 24750

★ **Overnight Range - 293.00**

#### **NQ (Prev. Day)**

★ High 25822.25

★ Low 25197.75

★ Close 25311.50

**NQ (Week Open) 26028.25**

## S&P 500

★ **HIGH** - 6772.00

★ **LOW** - 6712.25

★ **Bull Case:** defend the 6700 to seek the 6712, 6717, 6726, 6733, 6750, 6762, 6770, 6777, 6788, 6700

★ **Bear Case:** seal the 6800 to seek the 6788, 6777, 6762, 6750, 6733, 6726, 6717, 6712, 6700, 6688. 6677, 6662

★ **Overnight Range** - 59.75

### ES (Prev Day)

★ High 6843.50

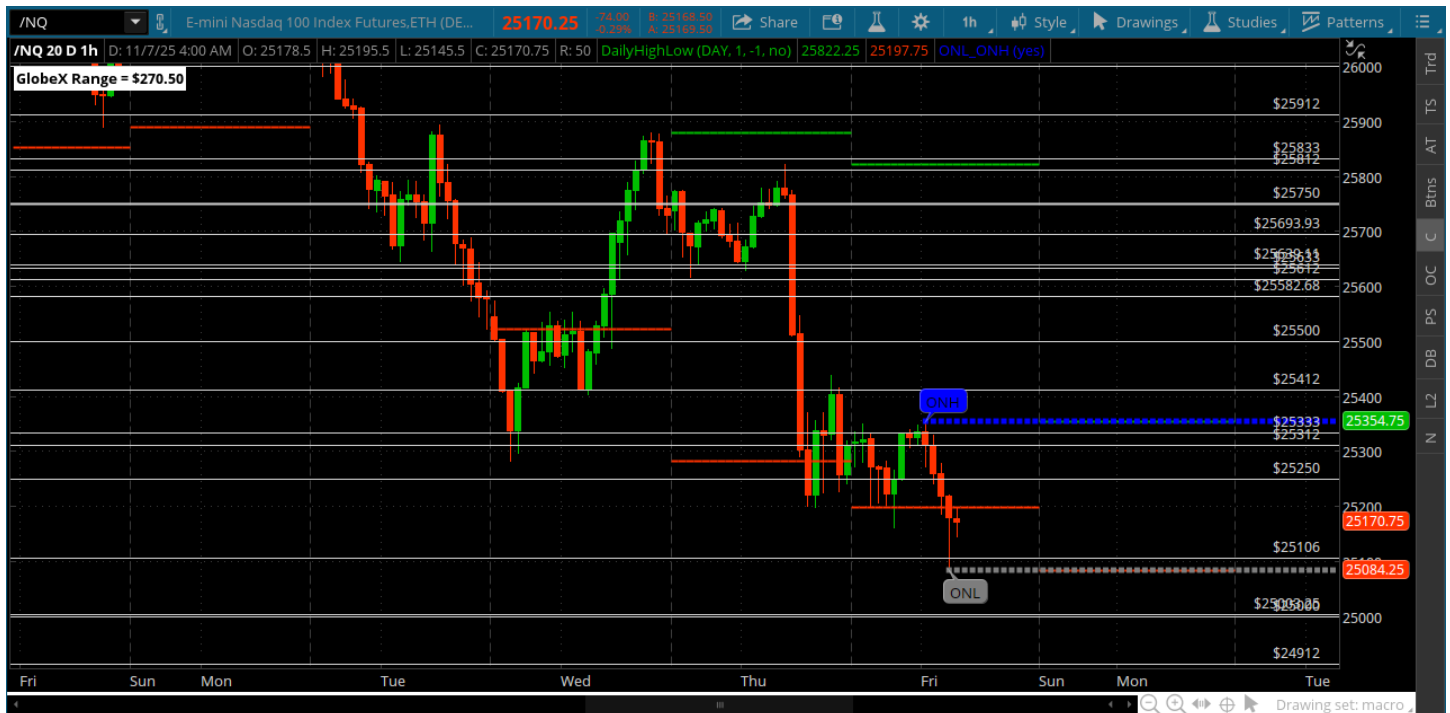
★ Low 6733.50

★ Close 6764.75

**ES (Week Open) 6878.00**

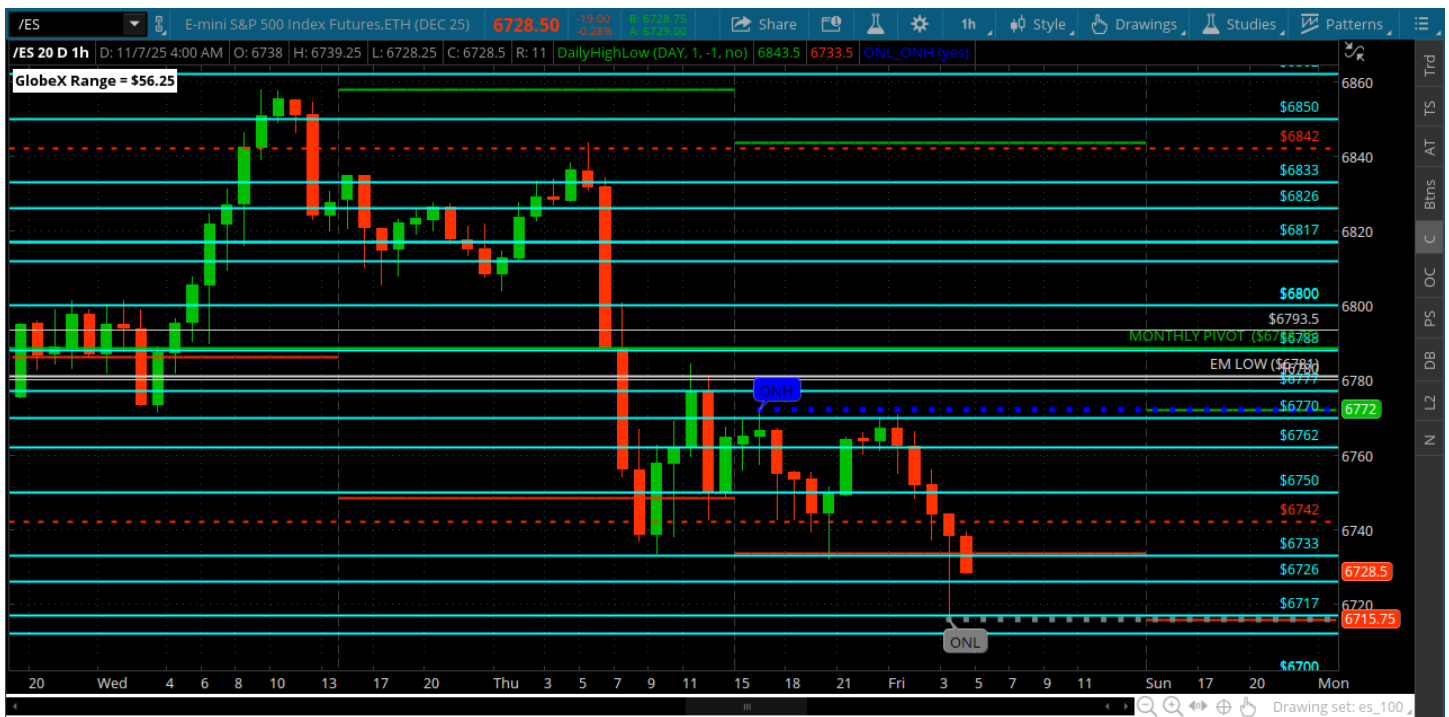
## Pre-Market Charts to Watch

### Friday, November 7, 2025 Pre-Market /NQ 1 Hour Chart



- Bulls have been struggling to get anything to stick now close to the 25k roundy
- They need back above the 25412 to really get something going
- That would be a sizeable rally from here and on a Friday
- There have been some big ranges so who knows - lets see if the bulls can get it going today - otherwise they risk a test of the 24912 below
-

## Friday, November 7, 2025 Pre-Market /ES 1 Hour Chart



- The open got sold and never recovered - now eyeing a test of the 6700
- There has been some big intraday ranges everyday mostly bearish
- Lets see how they want to close out the week

*Disclaimer:*

Disclaimer: Neither TheoTrade or any of its officers, directors, employees, other personnel, representatives, agents or independent contractors is, in such capacities, a licensed financial adviser, registered investment adviser, registered broker-dealer or FINRA|SIPC|NFA-member firm. TheoTrade does not provide investment or financial advice or make investment recommendations. TheoTrade is not in the business of transacting trades, nor does TheoTrade agree to direct your brokerage accounts or give trading advice tailored to your particular situation. Nothing contained in our content constitutes a solicitation, recommendation, promotion, or endorsement of any particular security, other investment product, transaction or investment. Trading Futures, Options on Futures, and retail off-exchange foreign currency transactions involves substantial risk of loss and is not suitable for all investors. You should carefully consider whether trading is suitable for you in light of your circumstances, knowledge, and financial resources. You may lose all or more of your initial investment. Opinions, market data, and recommendations are subject to change at any time. Past Performance is not necessarily indicative of future results.