



Tony Rago's Pre-Market Playbook

- ★ ES WEEKLY PIVOT 6776.67
- ★ NQ WEEKLY PIVOT 25400.67
- ★ Overnight Range
 - ES 51.50
 - NQ 300.50
 - VIX 18.65
- ★ **Bulls** need to hold above yest closes **6765** and **25226**-- long above these
- ★ Breakouts are above yesterday's highs **6872** and **25384** - **aggressive longs** (await for confirmation with a new high and a retest of the highs from above that holds)
- ★ **Bears** need under overnight lows **short under 6772** and **25269**
- ★ Breakdown is below yest lows **6655** and **24709** -- **aggressive shorts** (wait for confirmation with a new low and a retest of the lows from below that hold)
- ★ **RANGEBOUND: 2 Way trade long and shorts will work** to get the day done
- ★ Keep it simple and be patient for confirmation on either side or establish the range if we are going to be rangebound
- ★ Confirm rally continuation with sustained trade over the 30min IB High and likewise
- ★ bearish under the IB Low

ECON:

- N/A

Pre-Market Trading Levels for today

GLOBEX

NQ

★ **HIGH:** 25569.50

★ **LOW:** 25269.00

★ **Bull Case** defend the 25250 to seek the 25312, 25333, 25412, 25500, 25612, 25633, 25750, 25812, 25833, 25912, 26000

★ **Bear Case** seal the 25633 to seek the 25612, 25500, 25412, 25333, 25312, 25250, 25106, 25000, 24912, 24833, 24812, 24750

★ **Overnight Range - 300.50**

NQ (Prev. Day)

★ High 25384.75

★ Low 24709.25

★ Close 25226.75

NQ (Week Open) 25320.75

S&P 500

★ **HIGH** - 6823.50

★ **LOW** - 6772.00

★ **Bull Case:** defend the 6762 to seek the 6770, 6777, 6788, 6800, 6812, 6817, 6826, 6833, 6842, 6850, 6862, 6877

★ **Bear Case:** seal the 6833 to seek the 6826, 6817, 6812, 6800, 6788. 6777, 6762, 6750, 6742, 6733, 6726, 6717

★ **Overnight Range** - 51.50

ES (Prev Day)

★ High 6772.00

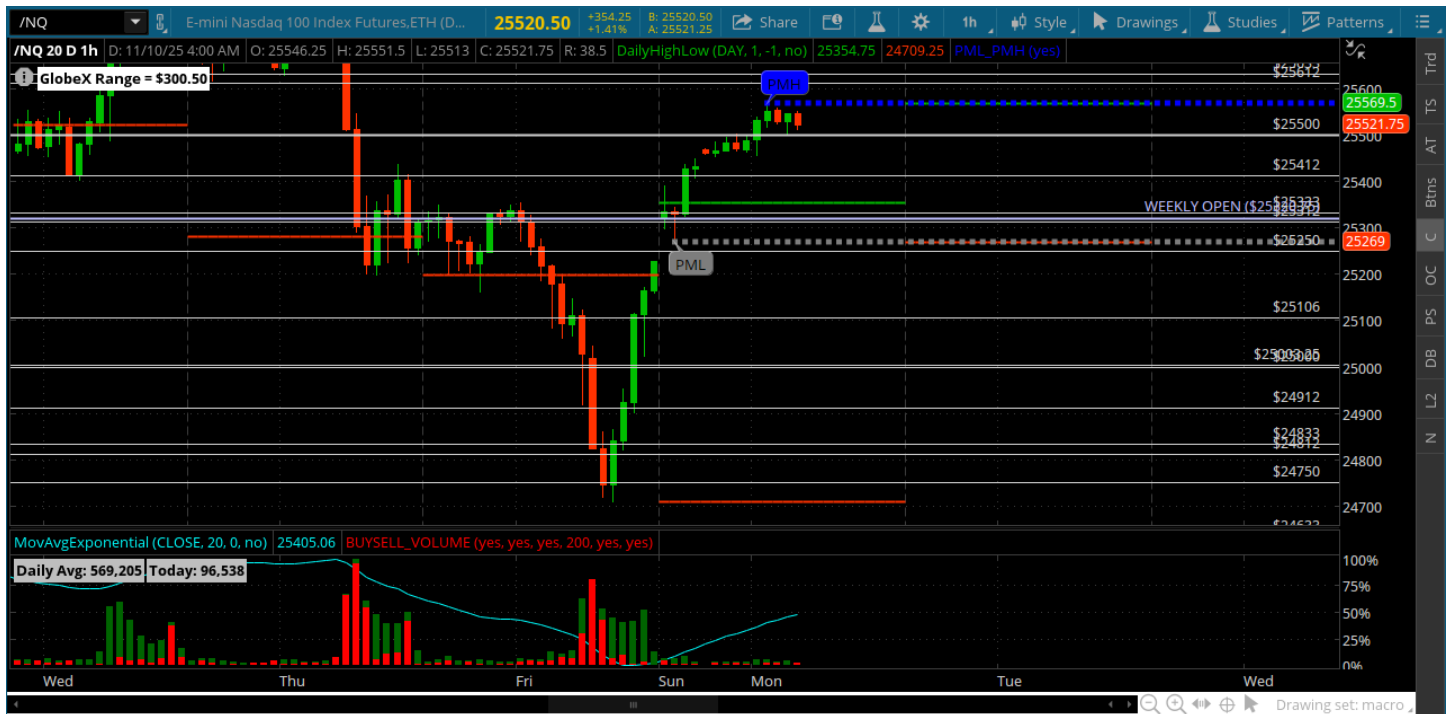
★ Low 6655.50

★ Close 6765.00

ES (Week Open) 6788.00

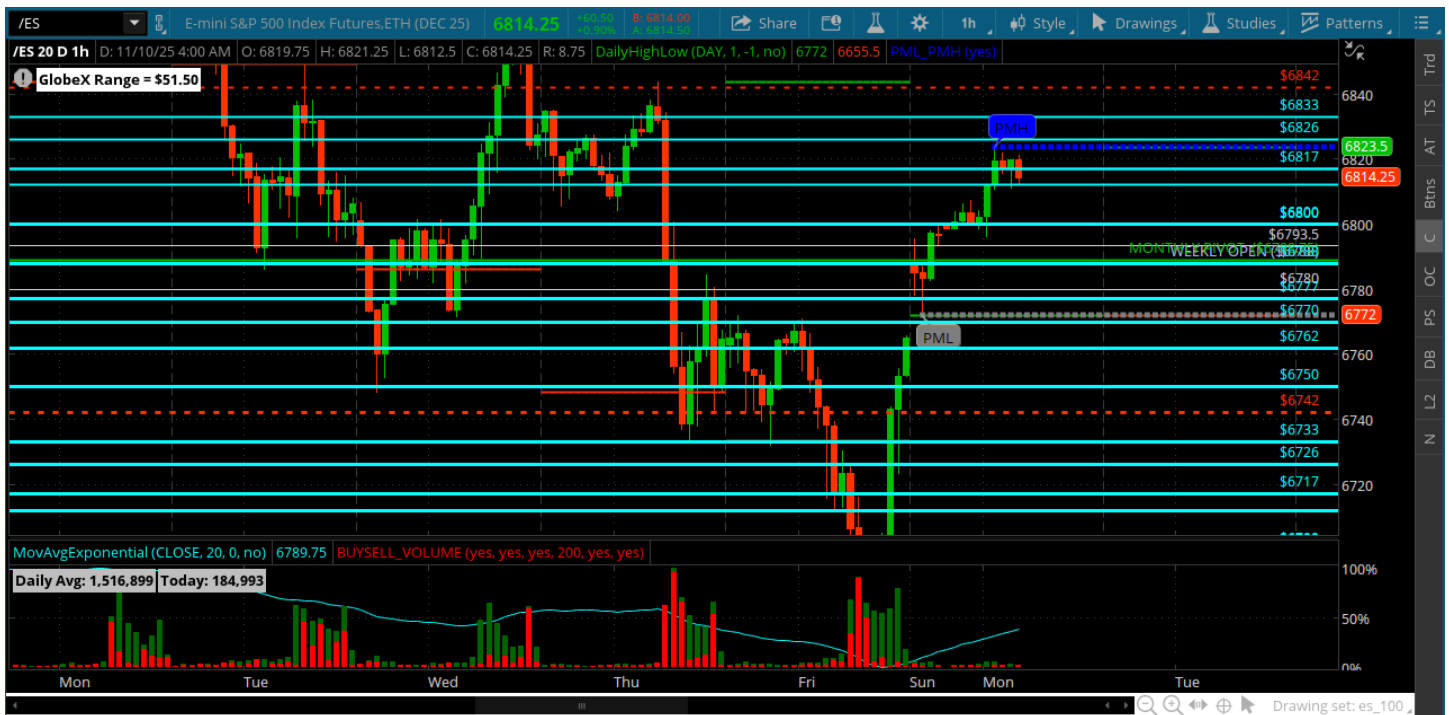
Pre-Market Charts to Watch

Monday, November 10, 2025 Pre-Market /NQ 1 Hour Chart



- Sticksave rally on the talk of government re-open
- Rally continued with a gap up at the open Sunday night
- Gap fill is 25288
- Lets see how we open - would like some retrace and a gap fill but will play it based on opening

Monday, November 10, 2025 Pre-Market /ES 1 Hour Chart



- Big reversal on govt re-open rumors and a gap up at the open
- Gap fill is 6765
- Would like to see some retrace to gap fill and the 6750
- Lets see how we open

Disclaimer:

Disclaimer: Neither TheoTrade or any of its officers, directors, employees, other personnel, representatives, agents or independent contractors is, in such capacities, a licensed financial adviser, registered investment adviser, registered broker-dealer or FINRA|SIPC|NFA-member firm. TheoTrade does not provide investment or financial advice or make investment recommendations. TheoTrade is not in the business of transacting trades, nor does TheoTrade agree to direct your brokerage accounts or give trading advice tailored to your particular situation. Nothing contained in our content constitutes a solicitation, recommendation, promotion, or endorsement of any particular security, other investment product, transaction or investment. Trading Futures, Options on Futures, and retail off-exchange foreign currency transactions involves substantial risk of loss and is not suitable for all investors. You should carefully consider whether trading is suitable for you in light of your circumstances, knowledge, and financial resources. You may lose all or more of your initial investment. Opinions, market data, and recommendations are subject to change at any time. Past Performance is not necessarily indicative of future results.