



Tony Rago's Pre-Market Playbook

★ Overnight Range

- ES 31.25
- NQ 197.00
- VIX 17.88

★ **Bulls** need to hold above yest closes **6857 and 25720-- long above these**

★ Breakouts are above yesterday's highs **6872 and 25760 - aggressive longs** (await for confirmation with a new high and a retest of the highs from above that holds)

★ **Bears** need under overnight lows **short under 6839 and 25596**

★ Breakdown is below yest lows **6772 and 25269 -- aggressive shorts** (wait for

★ confirmation with a new low and a retest of the lows from below that hold)

★ **RANGEBOUND: 2 Way trade long and shorts will work** to get the day done

★ Keep it simple and be patient for confirmation on either side or establish the range if we are going to be rangebound

★ Confirm rally continuation with sustained trade over the 30min IB High and likewise

★ bearish under the IB Low

ECON:

- Veterans Day holiday, bond market closed
- 10:25 am Fed governor Michael Barr speaks

Pre-Market Trading Levels for today

GLOBEX

NQ

★ **HIGH:** 25768.750

★ **LOW:** 25571.75

★ **Bull Case** defend the 25333 to seek the 25412, 25500, 25612, 25633, 25750, 25812, 25833, 25912, 26000

★ **Bear Case** seal the 25750 to seek the 25633, 25612, 25500, 25412, 25333, 25312, 25250, 25106, 25000, 24912, 24833, 24812, 24750

★ **Overnight Range - 197.00**

NQ (Prev. Day)

★ High 25760.50

★ Low 24269.00

★ Close 25720.75

NQ (Week Open) 25320.75

S&P 500

★ **HIGH** - 6867.00

★ **LOW** - 6835.75

★ **Bull Case:** defend the 6800 to seek the 6788, 6800, 6812, 6817, 6826, 6833, 6842, 6850, 6862, 6877

★ **Bear Case:** seal the 6862 to seek the 6850, 6833, 6826, 6817, 6812, 6800, 6788, 6777, 6762, 6750, 6742, 6733, 6726, 6717

★ **Overnight Range** - 31.25

ES (Prev Day)

★ High 6772.00

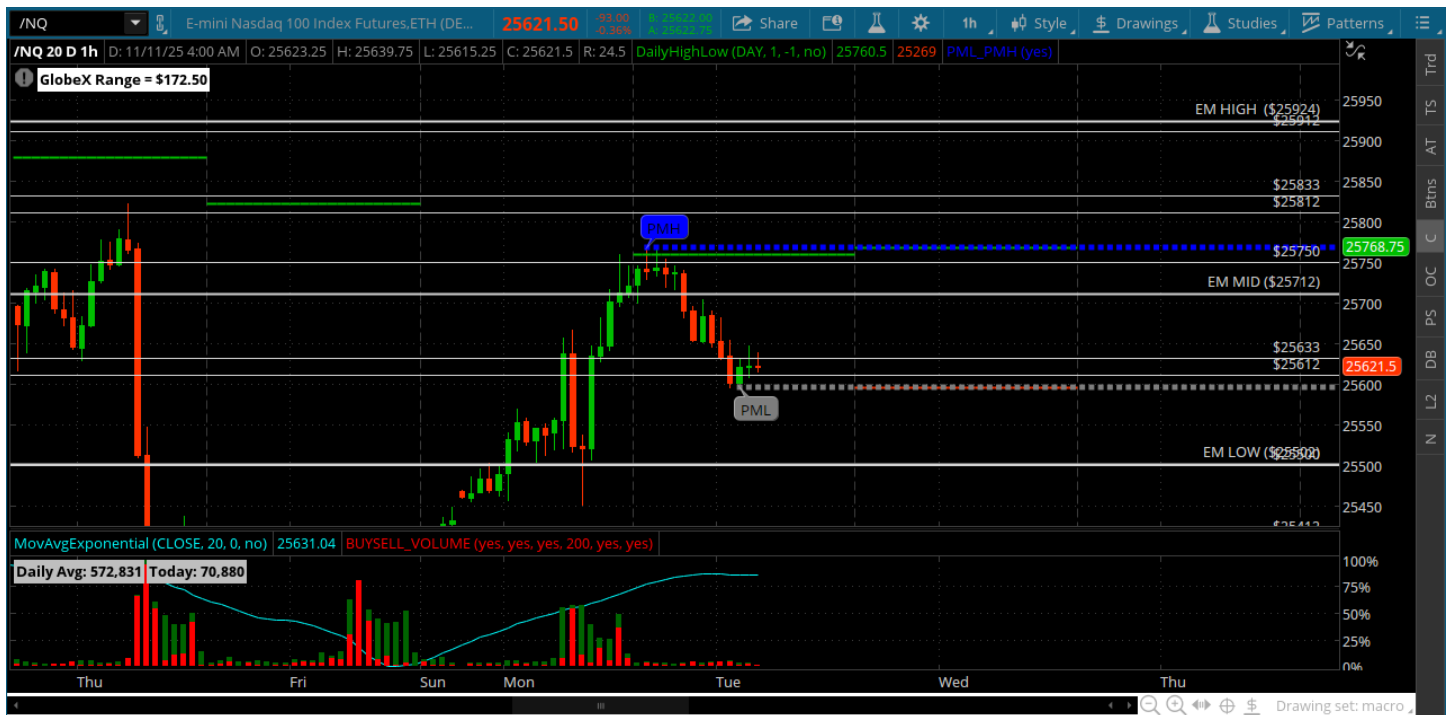
★ Low 6655.50

★ Close 6765.00

ES (Week Open) 6788.00

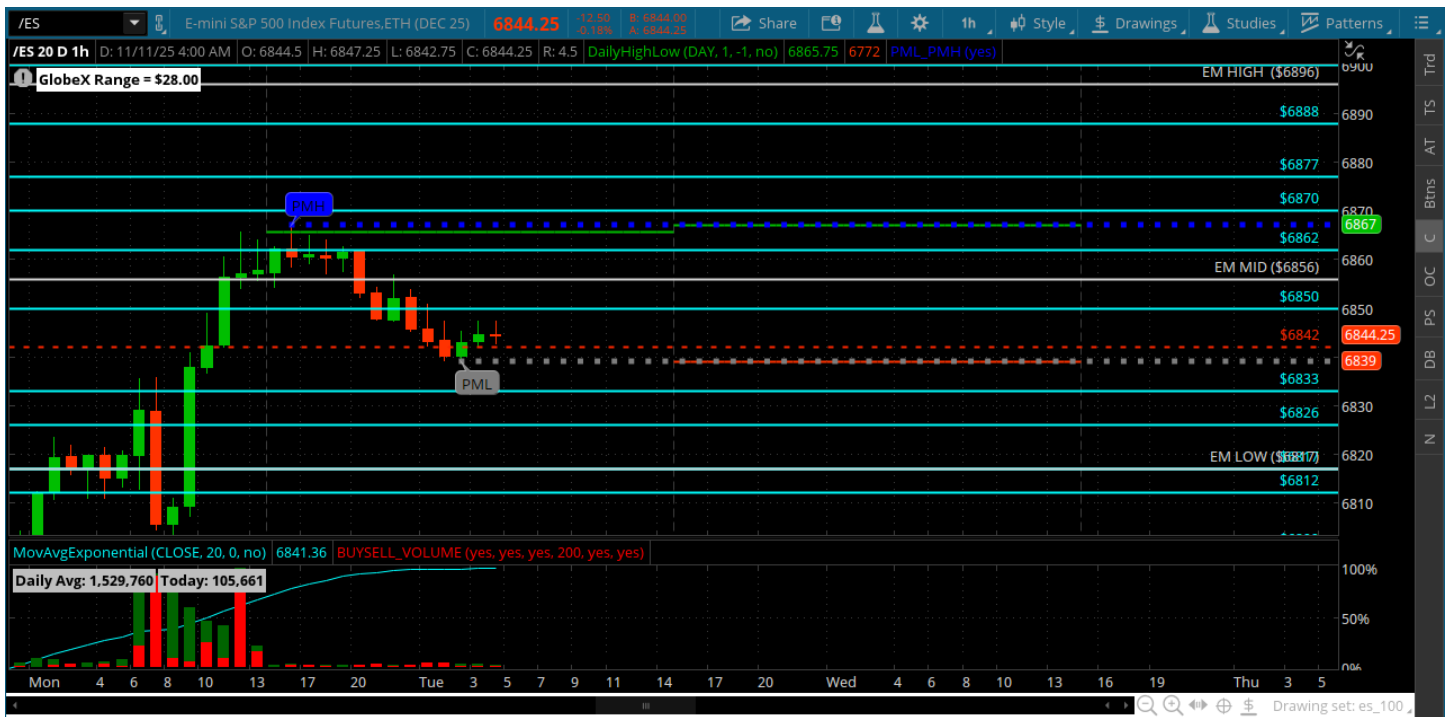
Pre-Market Charts to Watch

Tuesday, November 11, 2025 Pre-Market /NQ 1 Hour Chart



- 25750 marks 1000 points off the Friday lows
- Would like to see some retracement to the 25500 and 25412
- Over 25750 continues and can seek the 25912
- Under the 25412 sets up a deeper pullback

Tuesday, November 11, 2025 Pre-Market /ES 1 Hour Chart



- 6862 marks a solid 200+ point rally off the Friday lows
- Would like to see some retrace to the 6817, 6812
- Over the 6870 can rally to the 6896
- Under the 6812 can create a deeper pullback

Disclaimer:

Disclaimer: Neither TheoTrade or any of its officers, directors, employees, other personnel, representatives, agents or independent contractors is, in such capacities, a licensed financial adviser, registered investment adviser, registered broker-dealer or FINRA|SIPC|NFA-member firm. TheoTrade does not provide investment or financial advice or make investment recommendations. TheoTrade is not in the business of transacting trades, nor does TheoTrade agree to direct your brokerage accounts or give trading advice tailored to your particular situation. Nothing contained in our content constitutes a solicitation, recommendation, promotion, or endorsement of any particular security, other investment product, transaction or investment. Trading Futures, Options on Futures, and retail off-exchange foreign currency transactions involves substantial risk of loss and is not suitable for all investors. You should carefully consider whether trading is suitable for you in light of your circumstances, knowledge, and financial resources. You may lose all or more of your initial investment. Opinions, market data, and recommendations are subject to change at any time. Past Performance is not necessarily indicative of future results.