



Tony Rago's Pre-Market Playbook

★ Overnight Range

- ES 32.50
- NQ 200.50
- VIX 17.13

★ **Bulls** need to hold above yest closes **6874 and 25659-- long above these**

★ Breakouts are above yesterday's highs **6880 and 25768 - aggressive longs** (await for confirmation with a new high and a retest of the highs from above that holds)

★ **Bears** need under overnight lows **short under 6868 and 25629**

★ Breakdown is below yest lows **6830 and 25478 -- aggressive shorts** (wait for

★ confirmation with a new low and a retest of the lows from below that hold)

★ **RANGEBOUND: 2 Way trade long and shorts will work** to get the day done

★ Keep it simple and be patient for confirmation on either side or establish the range if we are going to be rangebound

★ Confirm rally continuation with sustained trade over the 30min IB High and likewise

★ bearish under the IB Low

ECON:

- 10:00 am Philadelphia Fed President Anna Paulson speaks
- 10:20 am Fed governor Chris Waller speaks
- 12:15 pm Atlanta Fed President Raphael Bostic speaks
- 12:30 pm Fed governor Stephen Miran speaks
- 4:00 pm Boston Fed President Susan Collins speaks

Pre-Market Trading Levels for today

GLOBEX

NQ

★ **HIGH:** 25830.00

★ **LOW:** 25629.50

★ **Bull Case** defend the 25612 to seek the 25633, 25750, 25812, 25833, 25912, 26000

★ **Bear Case** seal the 25912 to seek the 25833, 25812, 25750, 25633, 25612, 25500, 25412, 25333, 25312, 25250, 25106, 25000, 24912, 24833, 24812, 24750

★ **Overnight Range - 200.50**

NQ (Prev. Day)

★ High 25768.75

★ Low 25478.50

★ Close 25659.00

NQ (Week Open) 25320.75

S&P 500

★ **HIGH** - 6900.50

★ **LOW** - 6868.00

★ **Bull Case:** defend the 6850 to seek the 6862, 6877, 6888, 6900, 3912, 6917, 6926, 6933, 6950, 6962

★ **Bear Case:** seal the 6912 to seek the 6900, 6888. 6877, 6862, 6850, 6842, 6833, 6826, 6817

★ **Overnight Range** - 32.50

ES (Prev Day)

★ High 6865.75

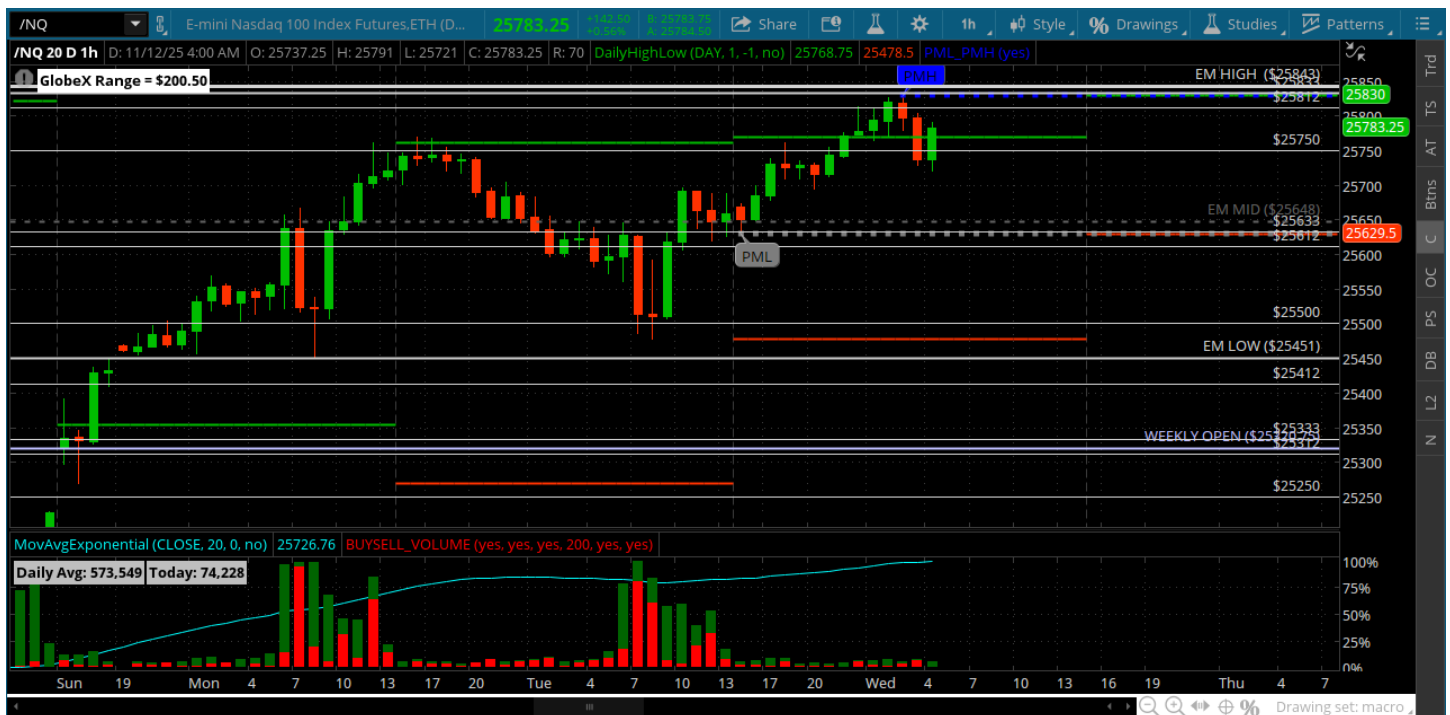
★ Low 6772.00

★ Close 6874.00

ES (Week Open) 6788.00

Pre-Market Charts to Watch

Wednesday, November 12, 2025 Pre-Market /NQ 1 Hour Chart



- Backtest of the 25500 holds and we reach for the 25750 - now the 25833 is open for a test
- Would like a pullback to the 25633 to go get the 25833 and 25912
- Bulls want to keep price above the 25612 or risk a retest of the 25500

Wednesday, November 12, 2025 Pre-Market /ES 1 Hour Chart



- 6900 gets a test overnight -- now a 250+ handle move off the Friday lows
- Impressive move but very shallow pullbacks and choppy conditions - hard to stay involved
- 6870 and 6862 need to hold on pullbacks

Disclaimer:

Disclaimer: Neither TheoTrade or any of its officers, directors, employees, other personnel, representatives, agents or independent contractors is, in such capacities, a licensed financial adviser, registered investment adviser, registered broker-dealer or FINRA|SIPC|NFA-member firm. TheoTrade does not provide investment or financial advice or make investment recommendations. TheoTrade is not in the business of transacting trades, nor does TheoTrade agree to direct your brokerage accounts or give trading advice tailored to your particular situation. Nothing contained in our content constitutes a solicitation, recommendation, promotion, or endorsement of any particular security, other investment product, transaction or investment. Trading Futures, Options on Futures, and retail off-exchange foreign currency transactions involves substantial risk of loss and is not suitable for all investors. You should carefully consider whether trading is suitable for you in light of your circumstances, knowledge, and financial resources. You may lose all or more of your initial investment. Opinions, market data, and recommendations are subject to change at any time. Past Performance is not necessarily indicative of future results.