



## *Tony Rago's Pre-Market Playbook*

### ★ Overnight Range

- ES 41.25
- NQ 220.00
- VIX 17.88

★ **Bulls** need to hold above yest closes **6873 and 25625-- long above these**

★ Breakouts are above yesterday's highs **6900 and 25830 - aggressive longs** (await for confirmation with a new high and a retest of the highs from above that holds

★ **Bears** need under overnight lows **short under 6851.25 and 25501**

★ Breakdown is below yest lows **6852 and 25488 -- aggressive shorts** (wait for

★ confirmation with a new low and a retest of the lows from below that hold)

★ **RANGEBOUND: 2 Way trade long and shorts will work** to get the day done

★ Keep it simple and be patient for confirmation on either side or establish the range if we are going to be rangebound

★ Confirm rally continuation with sustained trade over the 30min IB High and likewise

★ bearish under the IB Low

### **ECON:**

- 9:20 am New York Fed President John Williams welcoming remarks
- 10:25 am Minneapolis Fed President Neel Kashkari opening remarks
- 12:15 pm St. Louis Fed President Alberto Musalem speaks
- 12:20 pm Cleveland Fed President Beth Hammack speaks
- 2:00 pm Monthly U.S. federal budget
- 3:20 pm Atlanta Fed President Raphael Bostic speaks

## *Pre-Market Trading Levels for today*

---

### GLOBEX

#### NQ

★ **HIGH:** 25721.50

★ **LOW:** 25501.50

★ **Bull Case** defend the 25333 to seek the 25412, 25500, 25612, 25633, 25750, 25812, 25833, 25912, 26000

★ **Bear Case** seal the 25833 to seek the 25812, 25750, 25633, 25612, 25500, 25412, 25333, 25312, 25250, 25106, 25000, 24912, 24833, 24812, 24750

★ **Overnight Range - 220.00**

#### NQ (Prev. Day)

★ High 25830.00

★ Low 25488.75

★ Close 25625.00

**NQ (Week Open) 25320.75**

## S&P 500

★ **HIGH** - 6902.50

★ **LOW** - 6851.25

★ **Bull Case:** defend the 6833 to seek the 6850, 6862, 6877, 6888, 6900, 3912, 6917, 6926, 6933, 6950, 6962

★ **Bear Case:** seal the 6900 to seek the 6888. 6877, 6862, 6850, 6842, 6833, 6826, 6817

★ **Overnight Range** - 41.25

### ES (Prev Day)

★ High 6900.50

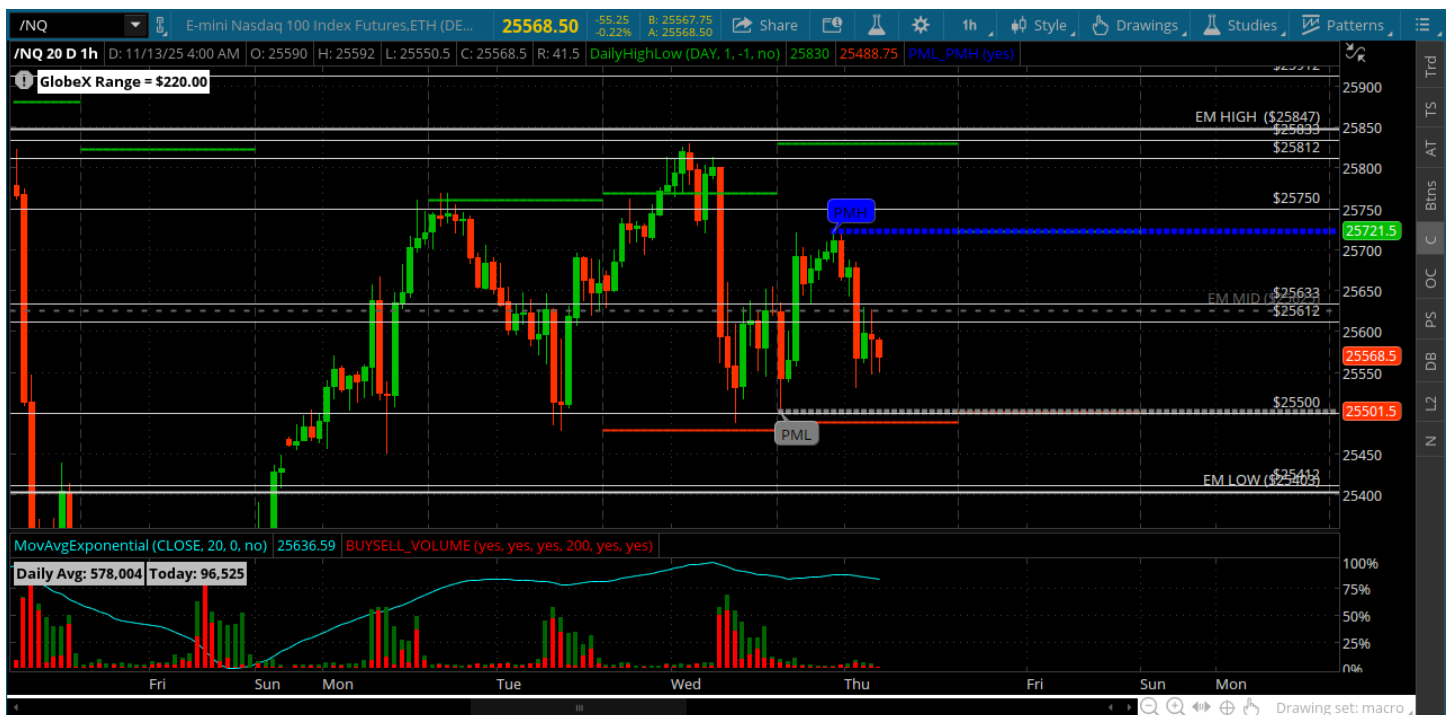
★ Low 6852.00

★ Close 6873.25

**ES (Week Open) 6788.00**

## Pre-Market Charts to Watch

Thursday, November 13, 2025 Pre-Market /NQ 1 Hour Chart



- 25500 is holding so far after multiple tests
- Bulls need above the 25750 and hold it
- Bears need to break the 25412 and make 25500 resistance
- Gap fill still looming below so we will see



*Disclaimer:*

Disclaimer: Neither TheoTrade or any of its officers, directors, employees, other personnel, representatives, agents or independent contractors is, in such capacities, a licensed financial adviser, registered investment adviser, registered broker-dealer or FINRA|SIPC|NFA-member firm. TheoTrade does not provide investment or financial advice or make investment recommendations. TheoTrade is not in the business of transacting trades, nor does TheoTrade agree to direct your brokerage accounts or give trading advice tailored to your particular situation. Nothing contained in our content constitutes a solicitation, recommendation, promotion, or endorsement of any particular security, other investment product, transaction or investment. Trading Futures, Options on Futures, and retail off-exchange foreign currency transactions involves substantial risk of loss and is not suitable for all investors. You should carefully consider whether trading is suitable for you in light of your circumstances, knowledge, and financial resources. You may lose all or more of your initial investment. Opinions, market data, and recommendations are subject to change at any time. Past Performance is not necessarily indicative of future results.