



Tony Rago's Pre-Market Playbook

- ★ ES WEEKLY PIVOT 6778.75
- ★ NQ WEEKLY PIVOT 25201.17
- ★ Overnight Range
 - ES 77.50
 - NQ 412.75
 - VIX 22.22
- ★ **Bulls** need to hold above yest closes **6765 and 25150-- long above these**
- ★ Breakouts are above yesterday's highs **6796 and 25293 - aggressive longs** (await for confirmation with a new high and a retest of the highs from above that holds)
- ★ **Bears** need under overnight lows **short under 6695 and 24733**
- ★ Breakdown is below yest lows **6670 and 24626 -- aggressive shorts** (wait for confirmation with a new low and a retest of the lows from below that hold)
- ★ **RANGEBOUND: 2 Way trade long and shorts will work** to get the day done
- ★ Keep it simple and be patient for confirmation on either side or establish the range if we are going to be rangebound
- ★ Confirm rally continuation with sustained trade over the 30min IB High and likewise
- ★ bearish under the IB Low

ECON:

- 8:30 am Empire State manufacturing survey
- 9:00 am Federal Reserve Vice Chair Philip Jefferson speaks
- 1:00 pm Minneapolis Fed President Neel Kashkari speaks
- 3:35 pm Federal Reserve governor Christopher Waller speaks

Pre-Market Trading Levels for today

GLOBEX

NQ

★ **HIGH:** 25361.25

★ **LOW:** 25022.00

★ **Bull Case** defend the 25000 to seek the 25106, 25250, 25312, 25333, 25412, 25500, 25612, 25633, 25750

★ **Bear Case** seal the 25500 to seek the 25412, 25333, 25312, 25250, 25106, 25000, 24912, 24833, 24812, 24750, 24633, 24612

★ **Overnight Range - 339.25**

NQ (Prev. Day)

★ High 25293.25

★ Low 24626.00

★ Close 25147.50

NQ (Week Open) 25142.25

S&P 500

★ **HIGH** - 6801.50

★ **LOW** - 6738.25

★ **Bull Case:** defend the 6733 to seek the 6750, 6762, 6777, 6788, 6800, 6812, 6817, 6826, 6833, 6850, 6862

★ **Bear Case:** seal the 6817 to seek the 6812, 6800, 6788, 6777, 6762, 6750, 6742, 6733, 6726, 6717, 6712, 6700, 6688, 6677, 6662, 6650, 6633, 6626

★ **Overnight Range** - 62.50

ES (Prev Day)

★ High 6795.50

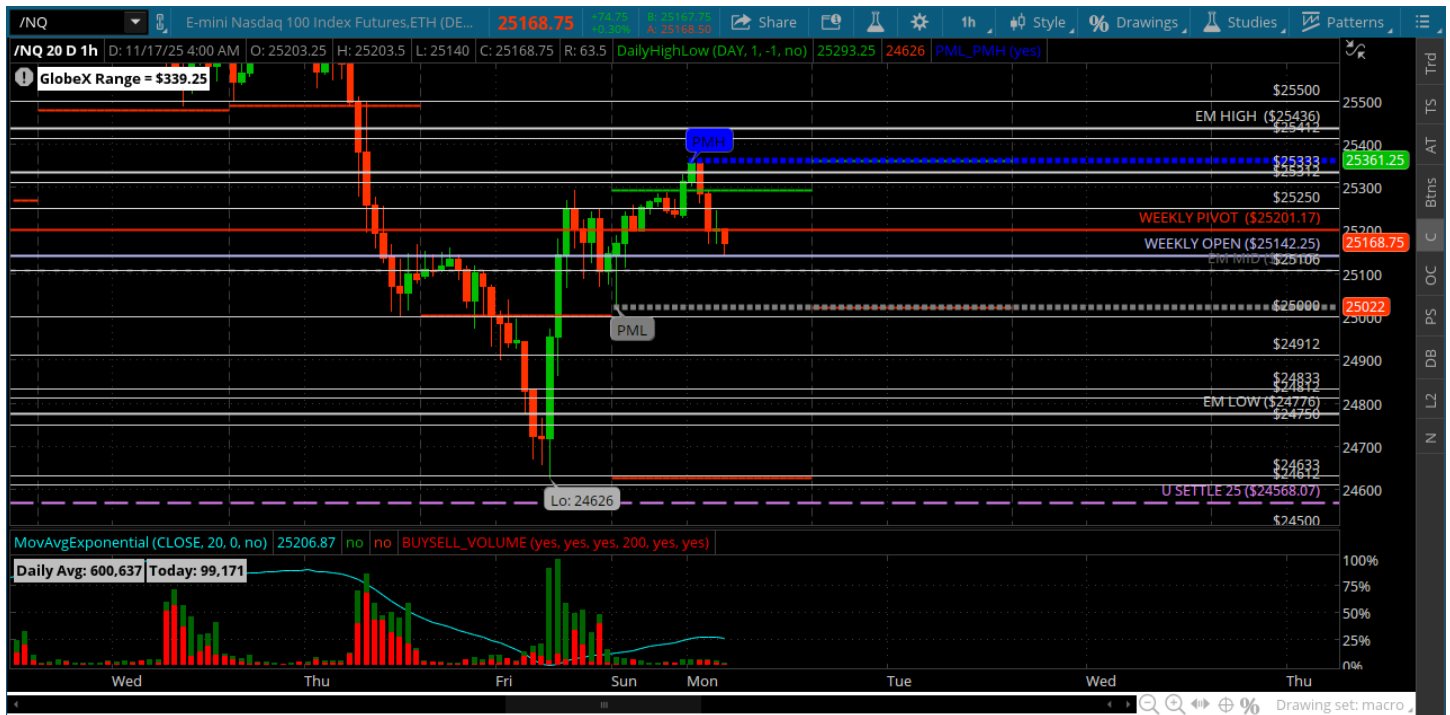
★ Low 6670.50

★ Close 6765.25

ES (Week Open) 6764.75

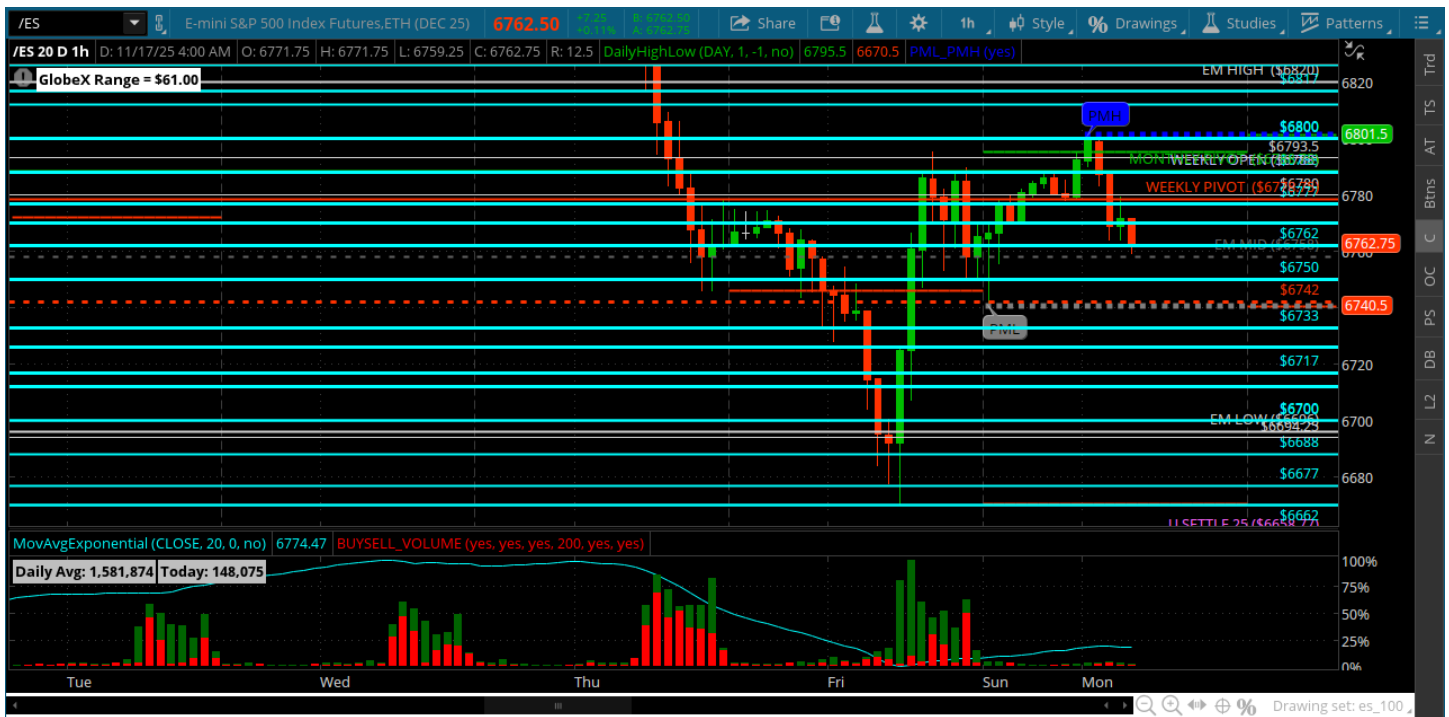
Pre-Market Charts to Watch

Monday, November 17, 2025 Pre-Market /NQ 1 Hour Chart



- Bulls need to defend the 25000 on a test from above and close above weekly pivot today
- Bears want to get and stay under the 25000 and close below weekly open today
- Today could be pivotal depending on the above

Friday, November 14, 2025 Pre-Market /ES 1 Hour Chart



- Bulls need to close above the 6777 and weekly pivot today
- Bears need to close below the 6750 today
- If bulls can reclaim the 6800 and close above it may spark a squeeze play back to the 6850

Disclaimer:

Disclaimer: Neither TheoTrade or any of its officers, directors, employees, other personnel, representatives, agents or independent contractors is, in such capacities, a licensed financial adviser, registered investment adviser, registered broker-dealer or FINRA|SIPC|NFA-member firm. TheoTrade does not provide investment or financial advice or make investment recommendations. TheoTrade is not in the business of transacting trades, nor does TheoTrade agree to direct your brokerage accounts or give trading advice tailored to your particular situation. Nothing contained in our content constitutes a solicitation, recommendation, promotion, or endorsement of any particular security, other investment product, transaction or investment. Trading Futures, Options on Futures, and retail off-exchange foreign currency transactions involves substantial risk of loss and is not suitable for all investors. You should carefully consider whether trading is suitable for you in light of your circumstances, knowledge, and financial resources. You may lose all or more of your initial investment. Opinions, market data, and recommendations are subject to change at any time. Past Performance is not necessarily indicative of future results.