



## *Tony Rago's Pre-Market Playbook*

### ★ Overnight Range

- ES 55.50
- NQ 288.25
- VIX 23.97

★ **Bulls** need to hold above yest closes **6627 and 24531-- long above these**

★ Breakouts are above yesterday's highs **6708 and 24959 - aggressive longs** (await for confirmation with a new high and a retest of the highs from above that holds)

★ **Bears** need under overnight lows **short under 6613 and 24445**

★ Breakdown is below yest lows **6594 and 24376 -- aggressive shorts** (wait for

★ confirmation with a new low and a retest of the lows from below that hold)

★ **RANGEBOUND: 2 Way trade long and shorts will work** to get the day done

★ Keep it simple and be patient for confirmation on either side or establish the range if we are going to be rangebound

★ Confirm rally continuation with sustained trade over the 30min IB High and likewise

★ bearish under the IB Low

### ECON:

- 8:30 am Philadelphia Fed manufacturing survey
- 8:30 am \*Housing starts
- 8:30 am \*Building permits
- 8:30 am U.S. trade deficit [delayed report]
- 10:00 am Federal Reserve governor Stephen Miran speaks
- 2:00 pm Minutes of Fed's October FOMC meeting
- 4:00 pm NVDA Reports

## *Pre-Market Trading Levels for today*

---

### GLOBEX

#### NQ

★ **HIGH:** 24733.25

★ **LOW:** 24445.00

★ **Bull Case** defend the 24612 to seek the 24633, 24750, 24812, 24833, 24912, 25000, 25106, 25250, 25312, 25333, 25412, 25500, 25612, 25633, 25750

★ **Bear Case** seal the 25000 to seek the 24912, 24833, 24812, 24750, 24633, 24612, 24500, 24412, 24333, 24312, 24250, 24106

★ **Overnight Range - 288.25**

#### NQ (Prev. Day)

★ High 24959.50

★ Low 24376.25

★ Close 24531.25

**NQ (Week Open) 25142.25**

## S&P 500

★ **HIGH** - 6668.75

★ **LOW** - 6613.25

★ **Bull Case:** defend the 6633 to seek the 6650, 6662, 6677, 6688, 6700, 6712, 6717, 6726, 6733, 6750, 6762

★ **Bear Case:** seal the 6712 to seek the 6700, 6688, 6677, 6662, 6650, 6642, 6633, 6626, 6617, 6612, 6600, 6588, 6577, 6562, 6550, 6533, 6526

★ **Overnight Range** - 55.50

### ES (Prev Day)

★ High 6708.75

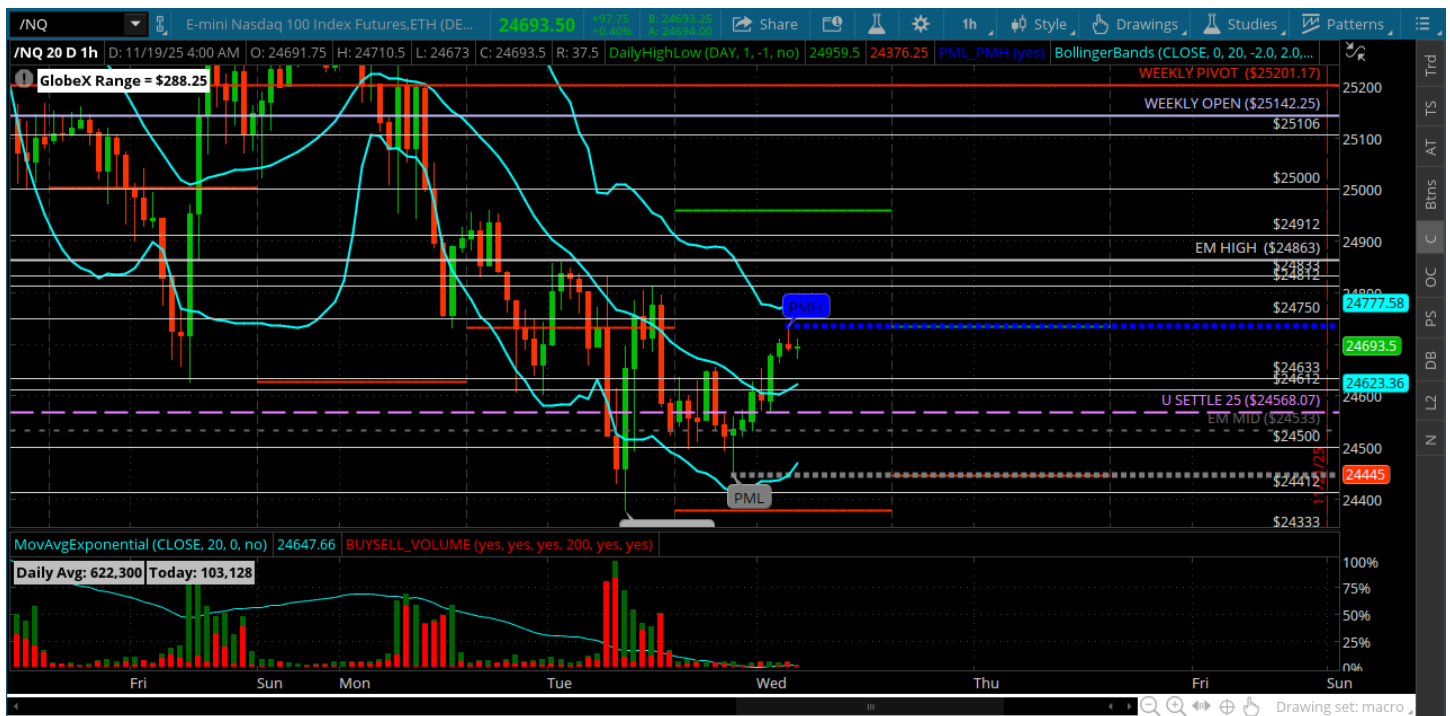
★ Low 6594.00

★ Close 6627.75

**ES (Week Open) 6764.75**

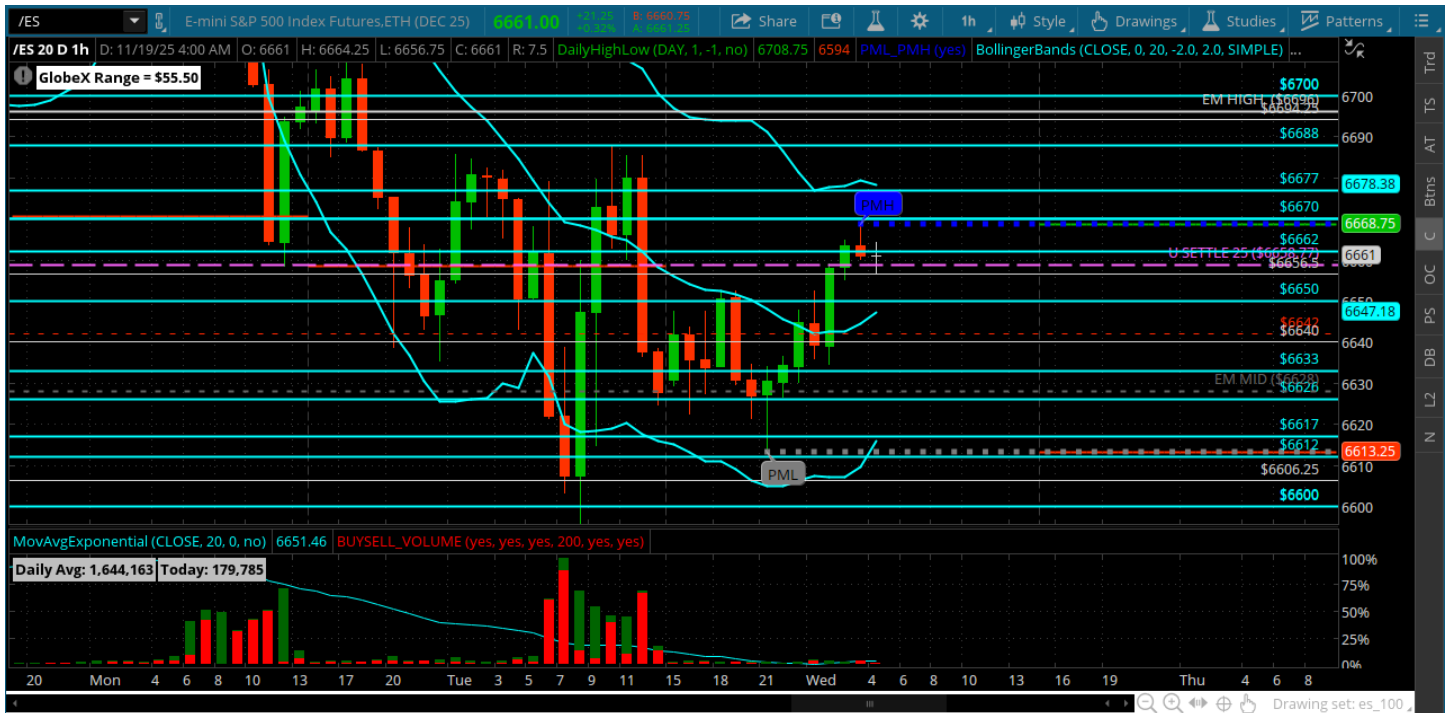
# Pre-Market Charts to Watch

## Wednesday, November 19, 2025 Pre-Market /NQ 1 Hour Chart



- Bulls need to defend the 24568 SETTLE
- Price can reach for the 25000 if they can hold that
- Under it opens the lows for a retest 24412, 24333

## Wednesday, November 19, 2025 Pre-Market /ES 1 Hour Chart



- 6658 SETTLE is the bull/bear -- second day we are opening near it
- Above it bulls can go get the 6700 and above
- Below it the bears need to target yesterday's lows

*Disclaimer:*

Disclaimer: Neither TheoTrade or any of its officers, directors, employees, other personnel, representatives, agents or independent contractors is, in such capacities, a licensed financial adviser, registered investment adviser, registered broker-dealer or FINRA|SIPC|NFA-member firm. TheoTrade does not provide investment or financial advice or make investment recommendations. TheoTrade is not in the business of transacting trades, nor does TheoTrade agree to direct your brokerage accounts or give trading advice tailored to your particular situation. Nothing contained in our content constitutes a solicitation, recommendation, promotion, or endorsement of any particular security, other investment product, transaction or investment. Trading Futures, Options on Futures, and retail off-exchange foreign currency transactions involves substantial risk of loss and is not suitable for all investors. You should carefully consider whether trading is suitable for you in light of your circumstances, knowledge, and financial resources. You may lose all or more of your initial investment. Opinions, market data, and recommendations are subject to change at any time. Past Performance is not necessarily indicative of future results.