



Tony Rago's Pre-Market Playbook

★ Overnight Range

- ES 72.25
- NQ 288.75
- VIX 20.10

- ★ **Bulls** need to hold above yest closes **6696 and 24958-- long above these**
- ★ Breakouts are above yesterday's highs **6709 and 24988 - aggressive longs** (await for confirmation with a new high and a retest of the highs from above that holds)
- ★ **Bears** need under overnight lows **short under 6694 and 24955**
- ★ Breakdown is below yest lows **6613 and 24445 -- aggressive shorts** (wait for confirmation with a new low and a retest of the lows from below that hold)
- ★ **RANGEBOUND: 2 Way trade long and shorts will work** to get the day done
- ★ Keep it simple and be patient for confirmation on either side or establish the range if we are going to be rangebound
- ★ Confirm rally continuation with sustained trade over the 30min IB High and likewise
- ★ bearish under the IB Low

ECON:

- 8:30 am U.S. employment report (delayed report) Sept.
- 10:00 am Existing home sales
- 10:00 am *U.S. leading economic indicators
- 8:30 am Philadelphia Fed manufacturing survey
- 11:00 am Federal Reserve governor Lisa Cook speaks
- 1:40 pm Chicago Fed President Austan Goolsbee speaks

Pre-Market Trading Levels for today

GLOBEX

NQ

★ **HIGH:** 25209.00

★ **LOW:** 24955.25

★ **Bull Case** defend the 24812 to seek the 24833, 24912, 25000, 25106, 25250, 25312, 25333, 25412, 25500, 25612, 25633, 25750

★ **Bear Case** seal the 25250 to seek the 25106, 25000, 24912, 24833, 24812, 24750, 24633, 24612, 24500, 24412, 24333, 24312, 24250, 24106

★ **Overnight Range - 288.75**

NQ (Prev. Day)

★ High 24988.00

★ Low 24445.00

★ Close 24958.75

NQ (Week Open) 25142.25

S&P 500

★ **HIGH** - 6757.00

★ **LOW** - 6694.00

★ **Bull Case:** defend the 6677 to seek the 6688, 6700, 6712, 6717, 6726, 6733, 6750, 6762

★ **Bear Case:** seal the 6762 to seek the 6750, 6733, 6726, 6717, 6712, 6700, 6688, 6677, 6662, 6650, 6642, 6633, 6626, 6617, 6612, 6600, 6588, 6577, 6562, 6550, 6533, 6526

★ **Overnight Range** - 72.25

ES (Prev Day)

★ High 6709.00

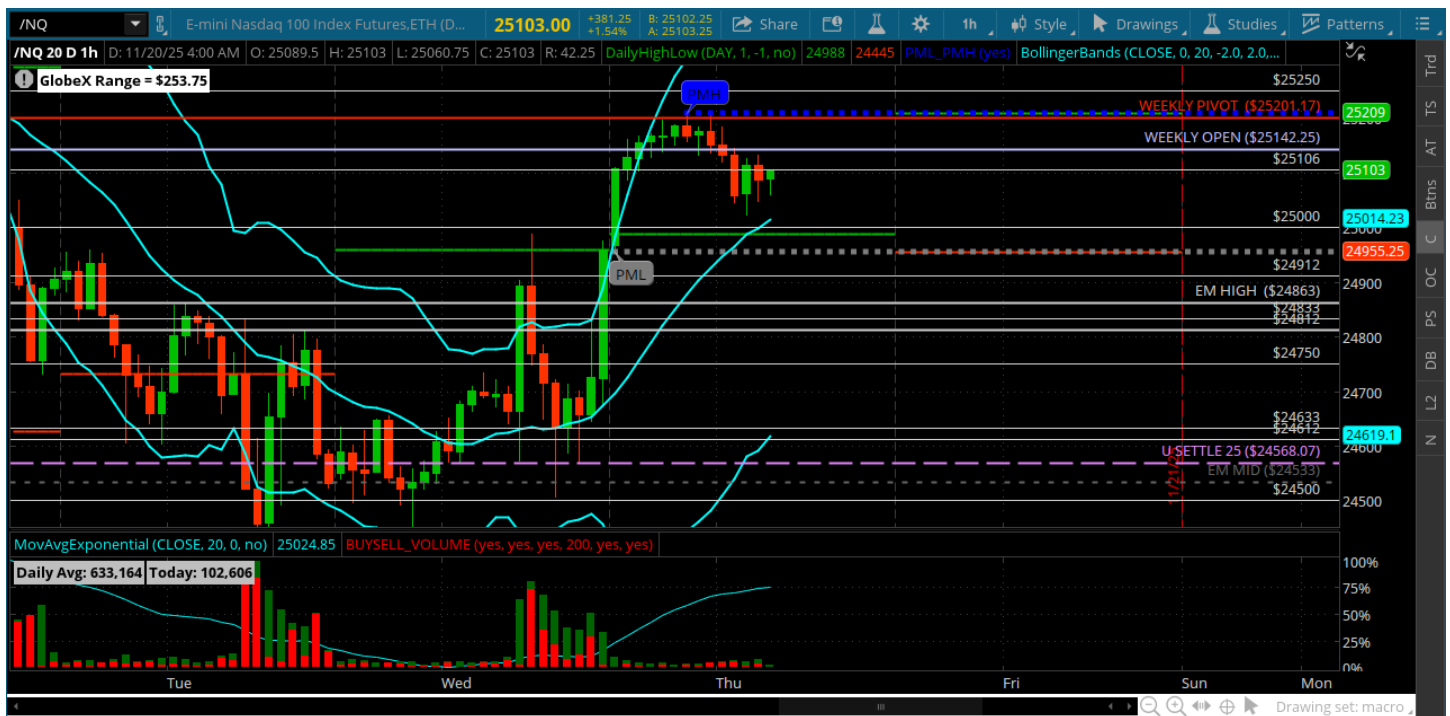
★ Low 6613.25

★ Close 6696.00

ES (Week Open) 6764.75

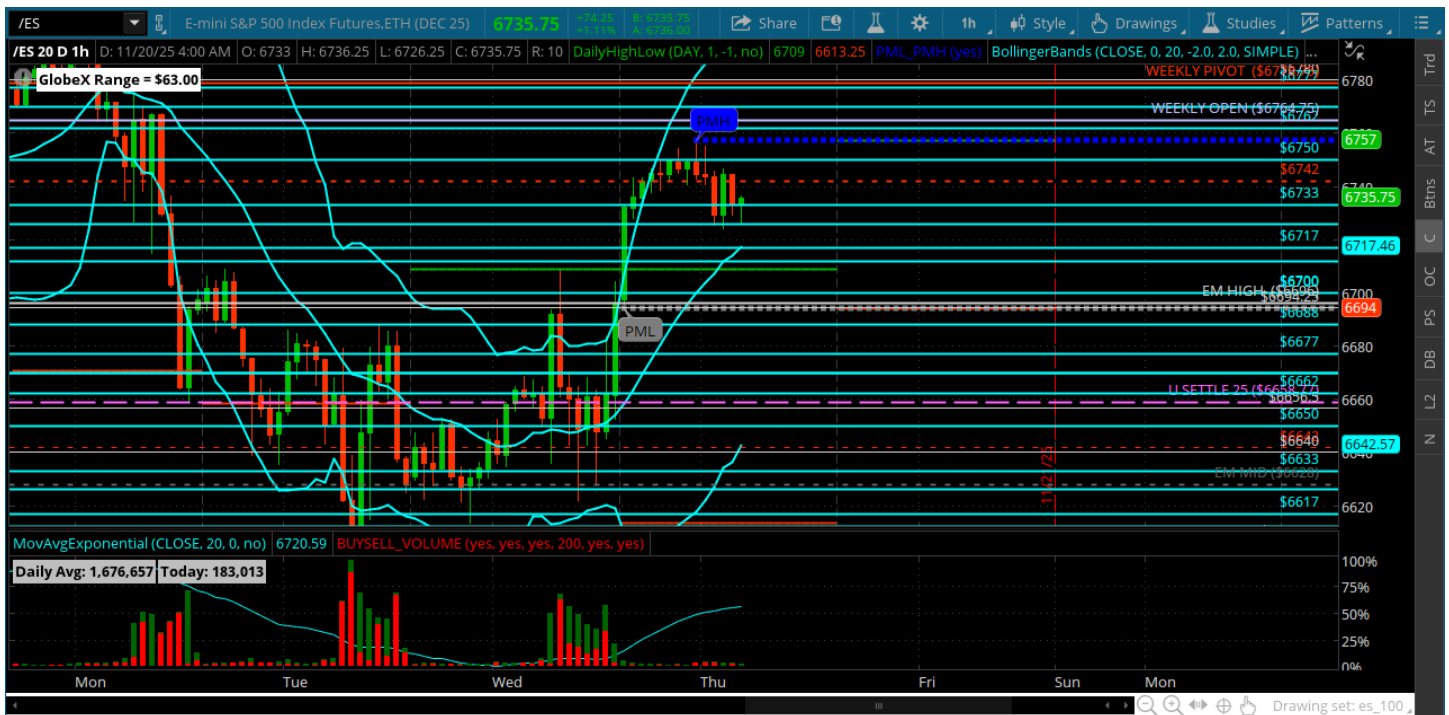
Pre-Market Charts to Watch

Thursday, November 20, 2025 Pre-Market /NQ 1 Hour Chart



- Bulls held the SETTLE after a lot of big chop and NVDA earnings helped push us up to the 25000, 25106 and the 25250 is open for a test
- Bulls need to hold pullbacks to the 24912
- Bears need back under the 24833

Thursday, November 20, 2025 Pre-Market /ES 1 Hour Chart



- BIG chop around the SETTLE and then launched
- off of with NVDA earnings
- Bulls got their catalyst now its up to them to defend pullbacks
- 6700 needs to hold on a pullback and 6677 is the line in the sand
- Under that the bears can take back over

Disclaimer:

Disclaimer: Neither TheoTrade or any of its officers, directors, employees, other personnel, representatives, agents or independent contractors is, in such capacities, a licensed financial adviser, registered investment adviser, registered broker-dealer or FINRA|SIPC|NFA-member firm. TheoTrade does not provide investment or financial advice or make investment recommendations. TheoTrade is not in the business of transacting trades, nor does TheoTrade agree to direct your brokerage accounts or give trading advice tailored to your particular situation. Nothing contained in our content constitutes a solicitation, recommendation, promotion, or endorsement of any particular security, other investment product, transaction or investment. Trading Futures, Options on Futures, and retail off-exchange foreign currency transactions involves substantial risk of loss and is not suitable for all investors. You should carefully consider whether trading is suitable for you in light of your circumstances, knowledge, and financial resources. You may lose all or more of your initial investment. Opinions, market data, and recommendations are subject to change at any time. Past Performance is not necessarily indicative of future results.