



## *Tony Rago's Pre-Market Playbook*

### ★ Overnight Range

- ES 74.00
- NQ 387.00
- VIX 25.16 **HIGH VOL**

★ **Bulls** need to hold above yest closes **6552 and 24073-- long above these**

★ Breakouts are above yesterday's highs **6791 and 25310 - aggressive longs** (await for confirmation with a new high and a retest of the highs from above that holds)

★ **Bears** need under overnight lows **short under 6525 and 24904**

★ Breakdown is below yest lows **6550 and 24073 -- aggressive shorts** (wait for

★ confirmation with a new low and a retest of the lows from below that hold)

★ **RANGEBOUND: 2 Way trade long and shorts will work** to get the day done

★ Keep it simple and be patient for confirmation on either side or establish the range if we are going to be rangebound

★ Confirm rally continuation with sustained trade over the 30min IB High and likewise

★ bearish under the IB Low

### ECON:

- 8:30 am Federal Reserve governor Michael Barr welcoming remarks
- 8:45 am Federal Reserve Vice Chair Philip Jefferson speaks
- 9:00 am Dallas Fed President Lorie Logan speaks
- 9:00 am Boston Fed President Susan Collins opening remarks
- 9:45 am S&P flash U.S. services PMI
- 10:00 am Consumer sentiment (final)
- 10:00 am Wholesale inventories (delayed report)

## *Pre-Market Trading Levels for today*

---

### GLOBEX

#### NQ

★ **HIGH:** 24292.00

★ **LOW:** 23904.50

★ **Bull Case** defend the 23833 to seek the 23912, 24000, 24106, 24250, 24312, 24333, 24412, 24500, 24612, 24633, 24750

★ **Bear Case** seal the 24250 to seek the 24106, 24000, 23912, 23833, 23812, 23750, 23633, 23612, 23500, 23412, 23333, 23312, 23250, 23106

★ **Overnight Range - 387.50**

#### NQ (Prev. Day)

★ High 25310.00

★ Low 24073.25

★ Close 24073.75

**NQ (Week Open) 25142.25**

## S&P 500

★ **HIGH** - 6599.00

★ **LOW** - 6525.00

★ **Bull Case:** defend the 6512 to seek the 6526, 6533, 6550, 6562, 6577, 6588, 6600, 6612, 6617, 6626, 6633, 6650, 6662

★ **Bear Case:** seal the 6633 to seek the 6626, 6617, 6612, 6600, 6588, 6577, 6562, 6550, 6542, 6533, 6526, 6517, 6512, 6400, 6488, 6477, 6462, 6450, 6433, 6426

★ **Overnight Range** - 74.00

### ES (Prev Day)

★ High 6791.25

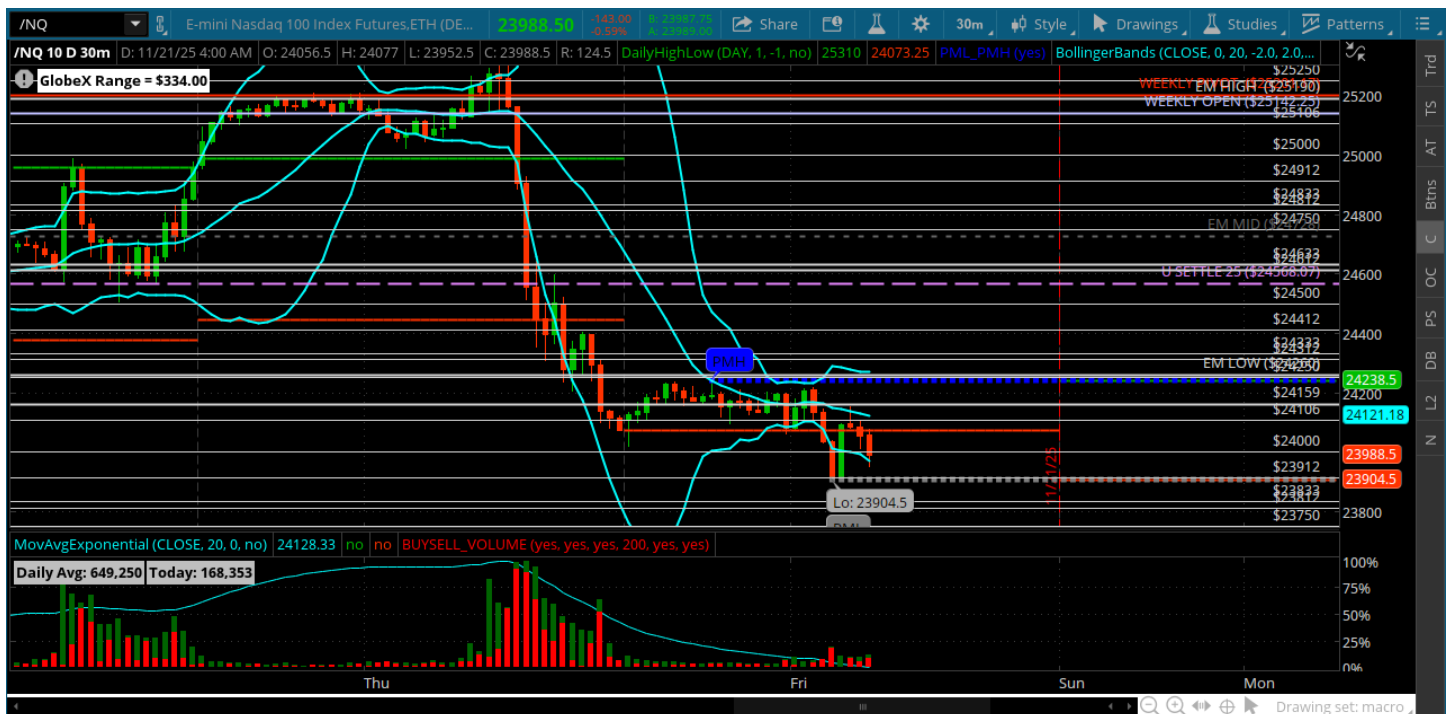
★ Low 6550.50

★ Close 6552.00

**ES (Week Open) 6764.75**

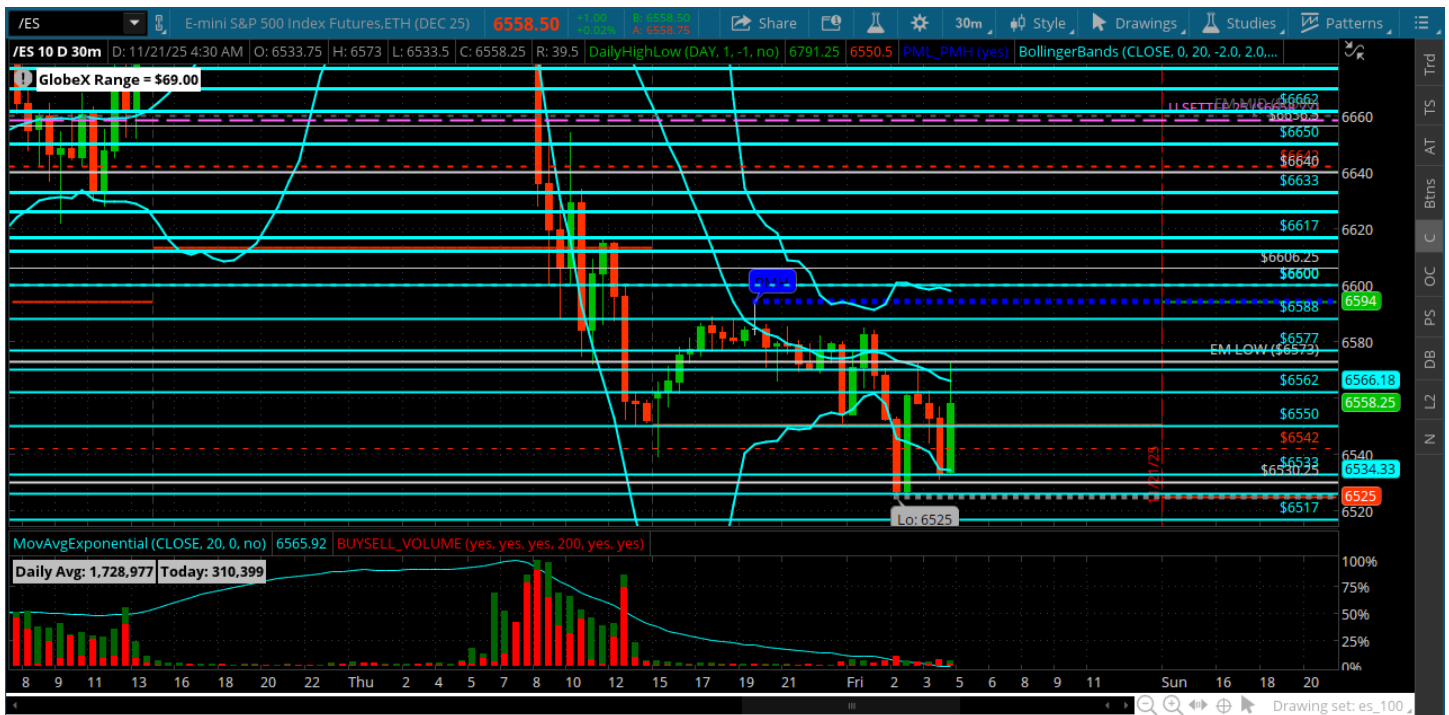
## Pre-Market Charts to Watch

Friday, November 21, 2025 Pre-Market /NQ 1 Hour Chart



- Bulls lost their advantage - as thin as it was with one stock
- Bears came back and dominated the day closing us near the 24000 roundy
- VIX also popped to 27 so today will be very volatile and a Friday
- Careful trying to pick the bottom here

## Friday, November 21, 2025 Pre-Market /ES 1 Hour Chart



- NVDA is not the market - the market started to fade via the AD early giving us a warning that the buyers were not interested in pushing us higher
- Bulls lost the SETTLE and now it is resistance on a test from below - that is 100 handles away
- Looking for some huge swings today but it is still a sell rallies market until we can reclaim the 6658 and hold it

*Disclaimer:*

Disclaimer: Neither TheoTrade or any of its officers, directors, employees, other personnel, representatives, agents or independent contractors is, in such capacities, a licensed financial adviser, registered investment adviser, registered broker-dealer or FINRA|SIPC|NFA-member firm. TheoTrade does not provide investment or financial advice or make investment recommendations. TheoTrade is not in the business of transacting trades, nor does TheoTrade agree to direct your brokerage accounts or give trading advice tailored to your particular situation. Nothing contained in our content constitutes a solicitation, recommendation, promotion, or endorsement of any particular security, other investment product, transaction or investment. Trading Futures, Options on Futures, and retail off-exchange foreign currency transactions involves substantial risk of loss and is not suitable for all investors. You should carefully consider whether trading is suitable for you in light of your circumstances, knowledge, and financial resources. You may lose all or more of your initial investment. Opinions, market data, and recommendations are subject to change at any time. Past Performance is not necessarily indicative of future results.