



## *Tony Rago's Pre-Market Playbook*

---

- ★ ES WEEKLY PIVOT 6652.67
- ★ NQ WEEKLY PIVOT 24538.25
- ★ Overnight Range
  - ES 44.50
  - NQ 201.50
  - VIX 23.15 **HIGH VOL**
- ★ **Bulls** need to hold above yest closes **6631 and 24073-- long above these**
- ★ Breakouts are above yesterday's highs **6677 and 25596 - aggressive longs** (await for confirmation with a new high and a retest of the highs from above that holds)
- ★ **Bears** need under overnight lows **short under 6625 and 24361**
- ★ Breakdown is below yest lows **6525 and 23904 -- aggressive shorts** (wait for confirmation with a new low and a retest of the lows from below that hold)
- ★ **RANGEBOUND: 2 Way trade long and shorts will work** to get the day done
- ★ Keep it simple and be patient for confirmation on either side or establish the range if we are going to be rangebound
- ★ Confirm rally continuation with sustained trade over the 30min IB High and likewise
- ★ bearish under the IB Low

### ECON:

-

## *Pre-Market Trading Levels for today*

---

### GLOBEX

#### NQ

★ **HIGH:** 24563.25

★ **LOW:** 24361.75

★ **Bull Case** defend the 24106 to seek the 24250, 24312, 24333, 24412, 24500, 24612, 24633, 24750, 24812, 24833

★ **Bear Case** seal the 24612 to seek the 24500, 24412, 24333, 24312, 24250, 24106, 24000, 23912, 23833, 23812, 23750, 23633

★ **Overnight Range - 201.50**

#### NQ (Prev. Day)

★ High 24596.25

★ Low 23904.50

★ Close 24073.75

**NQ (Week Open) 24455.75**

## S&P 500

★ **HIGH** - 6669.50

★ **LOW** - 6625.00

★ **Bull Case:** defend the 6600 to seek the 6612, 6617, 6626, 6633, 6650, 6662, 6677, 6688, 6700, 6712, 6717, 6726, 6733, 6750, 6762

★ **Bear Case:** seal the 6688 to seek the 6677, 6662, 6650, 6642, 6633, 6626, 6617, 6612, 6500, 6588, 6577, 6562, 6550, 6533, 6526

★ **Overnight Range** - 44.50

### ES (Prev Day)

★ High 6791.25

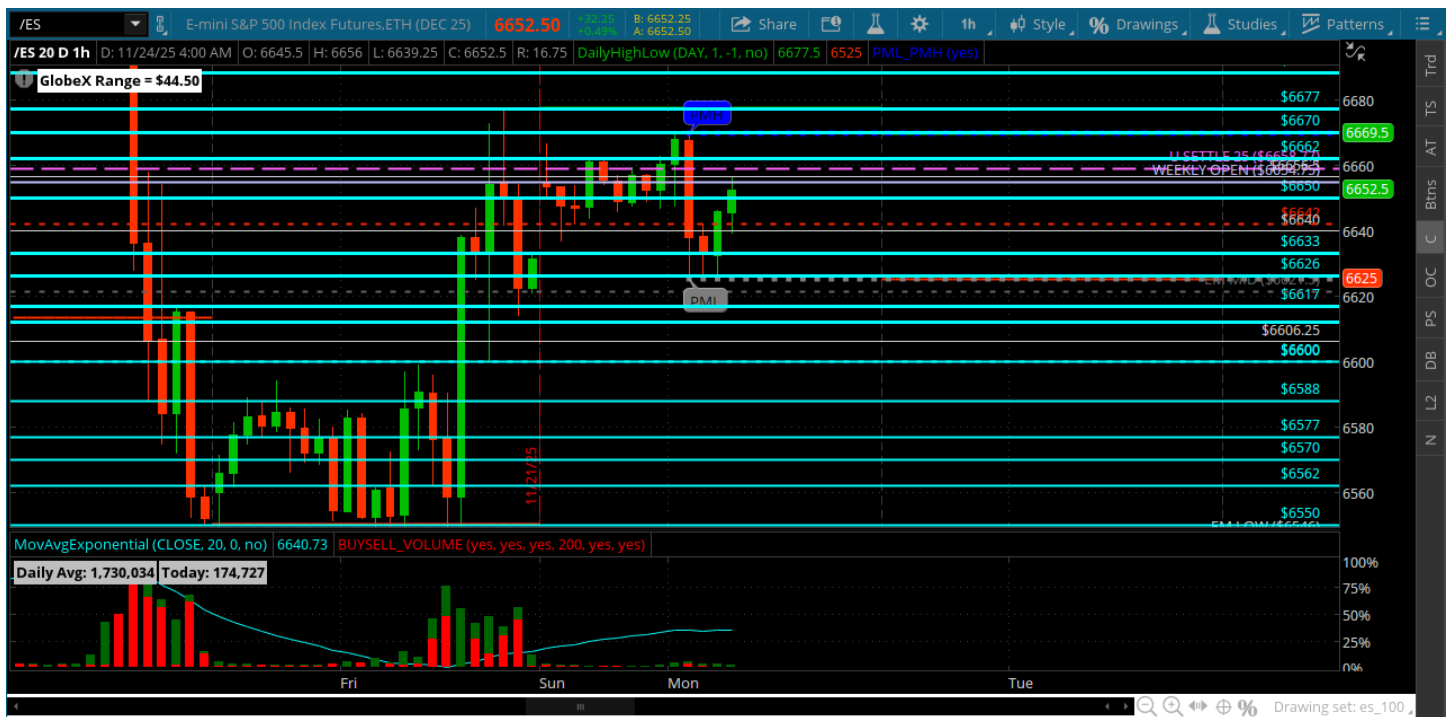
★ Low 6550.50

★ Close 6552.00

**ES (Week Open) 6654.75**



### Monday, November 24, 2025 Pre-Market /ES 1 Hour Chart



- Gap up at the open and gap filled - coming into the open it will be all about the 6658 again -- bullish above and bearish below.
- Above it should have no problem seeking the 6700 and 6717
- Below it should have no problem seeking the 6600 and 6588

*Disclaimer:*

Disclaimer: Neither TheoTrade or any of its officers, directors, employees, other personnel, representatives, agents or independent contractors is, in such capacities, a licensed financial adviser, registered investment adviser, registered broker-dealer or FINRA|SIPC|NFA-member firm. TheoTrade does not provide investment or financial advice or make investment recommendations. TheoTrade is not in the business of transacting trades, nor does TheoTrade agree to direct your brokerage accounts or give trading advice tailored to your particular situation. Nothing contained in our content constitutes a solicitation, recommendation, promotion, or endorsement of any particular security, other investment product, transaction or investment. Trading Futures, Options on Futures, and retail off-exchange foreign currency transactions involves substantial risk of loss and is not suitable for all investors. You should carefully consider whether trading is suitable for you in light of your circumstances, knowledge, and financial resources. You may lose all or more of your initial investment. Opinions, market data, and recommendations are subject to change at any time. Past Performance is not necessarily indicative of future results.