



Tony Rago's Pre-Market Playbook

★ Overnight Range

- ES 30.75
- NQ 164.50
- VIX 20.14

★ **Bulls** need to hold above yest closes **6725 and 24962-- long above these**

★ Breakouts are above yesterday's highs **6631 and 25993 - aggressive longs** (await for confirmation with a new high and a retest of the highs from above that holds)

★ **Bears** need under overnight lows **short under 6701 and 24822**

★ Breakdown is below yest lows **6625 and 24361 -- aggressive shorts** (wait for confirmation with a new low and a retest of the lows from below that hold)

★ **RANGEBOUND: 2 Way trade long and shorts will work** to get the day done

★ Keep it simple and be patient for confirmation on either side or establish the range if we are going to be rangebound

★ Confirm rally continuation with sustained trade over the 30min IB High and likewise

★ bearish under the IB Low

ECON:

- 8:30 am U.S. retail sales (delayed report) Sept.
- 8:30 am Core PPI
- 9:00 am S&P Case-Shiller home price index (20 cities) Sept.
- 10:00 am Business inventories (delayed report) Aug.
- 10:00 am Consumer confidence
- 10:00 am Pending home sales

Pre-Market Trading Levels for today

GLOBEX

NQ

★ **HIGH:** 24986.50

★ **LOW:** 24822.00

★ **Bull Case** defend the 24750 to seek the 24812, 24833, 24912, 25000, 25106, 25250, 25312, 25333, 25412, 25500, 25612, 25633, 25750, 25812, 25833

★ **Bear Case** seal the 25250 to seek the 25106, 25000, 24912, 24833, 24812, 24750, 24633, 24500, 24412, 24333

★ **Overnight Range - 164.50**

NQ (Prev. Day)

★ High 24993.50

★ Low 24361.75

★ Close 24962.75

NQ (Week Open) 24455.75

S&P 500

★ **HIGH** - 6732.50

★ **LOW** - 6701.75

★ **Bull Case:** defend the 6677 to seek the 6788, 6700, 6712, 6717, 6726, 6733, 6750, 6762, 6777, 6788, 6800, 6812, 6817, 6826, 6833, 6850, 6862

★ **Bear Case:** seal the 6750 to seek the 6742, 6733, 6726, 6717, 6712, 6600, 6688, 6677, 6662, 6650, 6633, 6626

★ **Overnight Range** - 30.75

ES (Prev Day)

★ High 6731.75

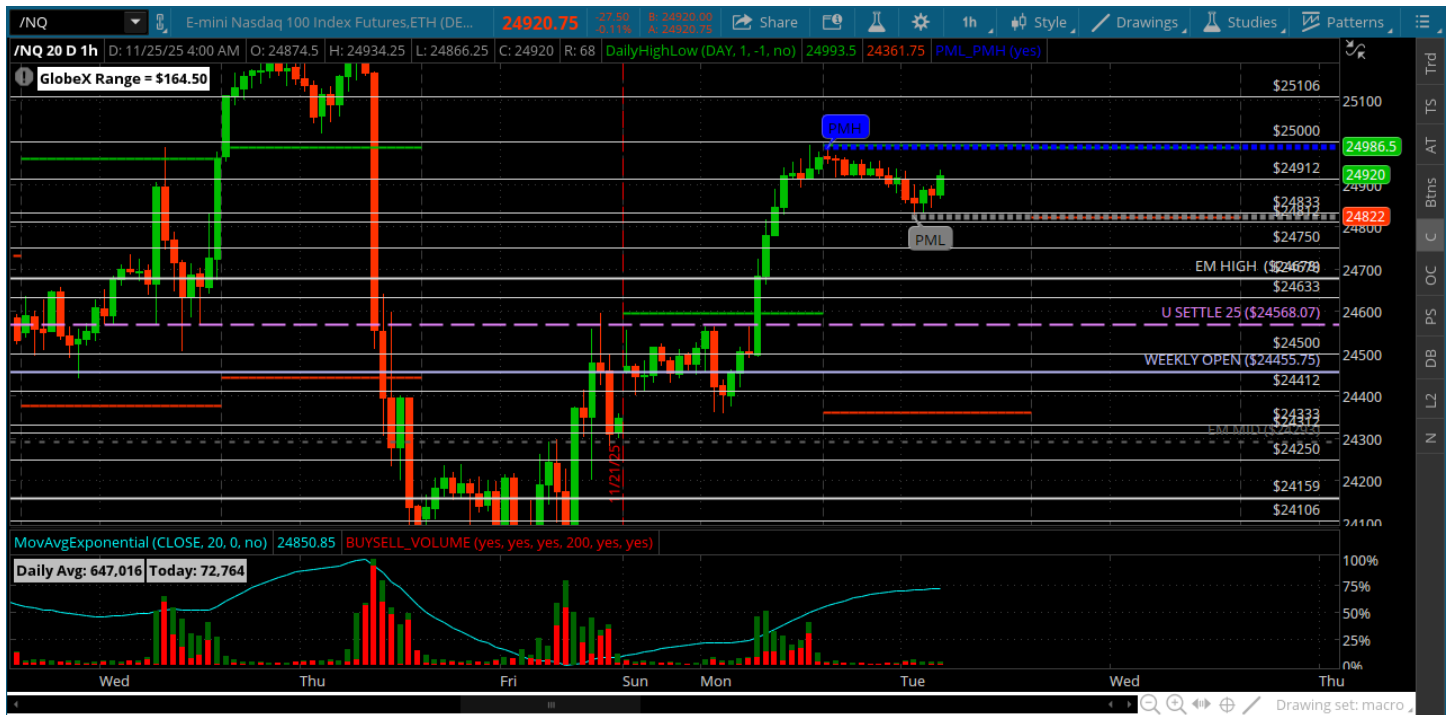
★ Low 6625.00

★ Close 6725.00

ES (Week Open) 6654.75

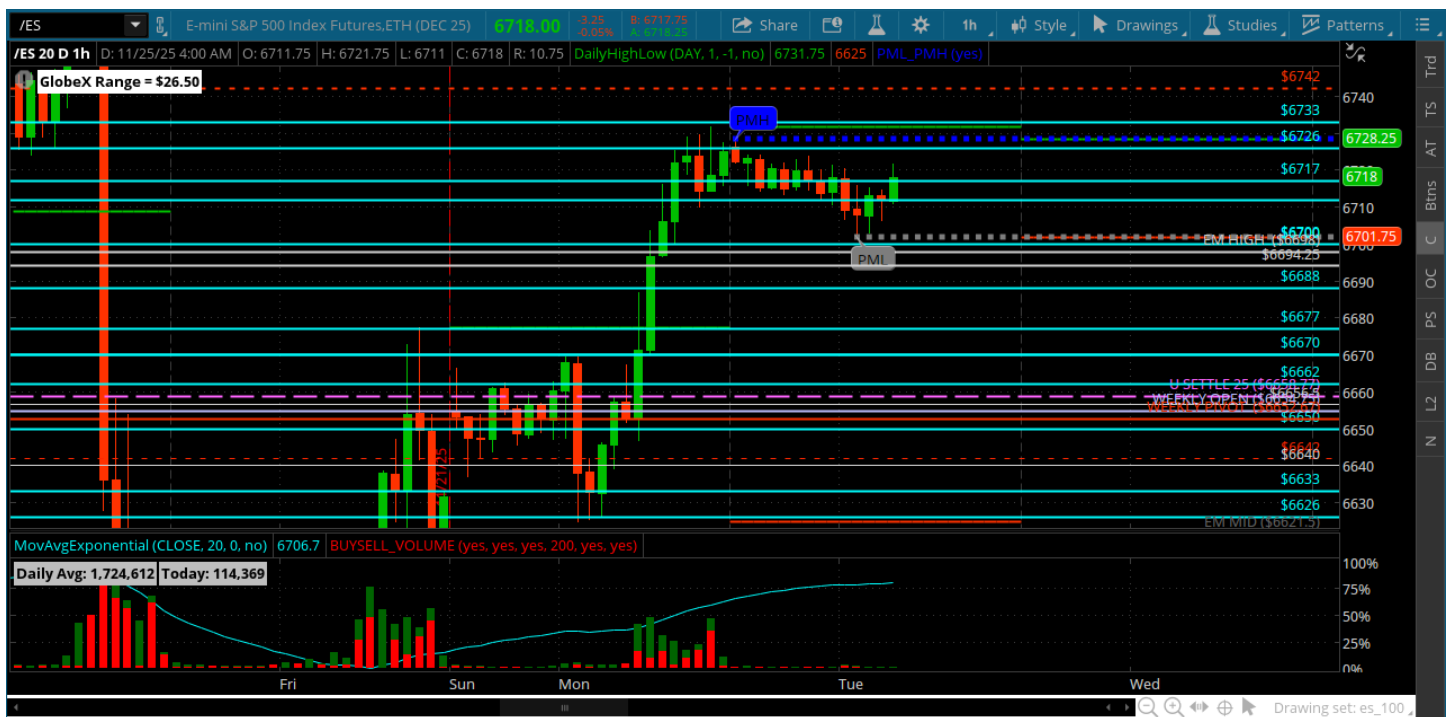
Pre-Market Charts to Watch

Tuesday, November 25, 2025 Pre-Market /NQ 1 Hour Chart



- Need to print the 25000 to see if sellers step back in
- Close to a 3% rally yesterday - no sellers so far
- Would like to see a pullback to the 24750, 24633 for some clues
- Let see how we open
-

Tuesday, November 25, 2025 Pre-Market /ES 1 Hour Chart



- 3% Rally off of Fridays low that hasnt gotten sold so far - maybe this is the kick off the end of the year rally?
- Would like to see a pullback to the 6677, 6662 to see if they hold and rally back above the 6712
- Bears seem to be on the sidelines but VIX is still over 20 so not going to completely give up on them
- Lets see how we open -- tape should slow down from here with holiday week

Disclaimer:

Disclaimer: Neither TheoTrade or any of its officers, directors, employees, other personnel, representatives, agents or independent contractors is, in such capacities, a licensed financial adviser, registered investment adviser, registered broker-dealer or FINRA|SIPC|NFA-member firm. TheoTrade does not provide investment or financial advice or make investment recommendations. TheoTrade is not in the business of transacting trades, nor does TheoTrade agree to direct your brokerage accounts or give trading advice tailored to your particular situation. Nothing contained in our content constitutes a solicitation, recommendation, promotion, or endorsement of any particular security, other investment product, transaction or investment. Trading Futures, Options on Futures, and retail off-exchange foreign currency transactions involves substantial risk of loss and is not suitable for all investors. You should carefully consider whether trading is suitable for you in light of your circumstances, knowledge, and financial resources. You may lose all or more of your initial investment. Opinions, market data, and recommendations are subject to change at any time. Past Performance is not necessarily indicative of future results.