



Tony Rago's Pre-Market Playbook

★ Overnight Range

- ES 32.50
- NQ 174.50
- VIX 18.56

★ **Bulls** need to hold above yest closes **6780 and 25064-- long above these**

★ Breakouts are above yesterday's highs **6792 and 25135 - aggressive longs** (await for confirmation with a new high and a retest of the highs from above that holds)

★ **Bears** need under overnight lows **short under 6778 and 25061**

★ Breakdown is below yest lows **6674 and 24602 -- aggressive shorts** (wait for

★ confirmation with a new low and a retest of the lows from below that hold)

★ **RANGEBOUND: 2 Way trade long and shorts will work** to get the day done

★ Keep it simple and be patient for confirmation on either side or establish the range if we are going to be rangebound

★ Confirm rally continuation with sustained trade over the 30min IB High and likewise

★ bearish under the IB Low

ECON:

- 8:30 am Initial jobless claims
- 8:30 am Durable-goods minus transportation (delayed report) Sept
- 2:00 pm Federal Reserve Beige Book

Pre-Market Trading Levels for today

GLOBEX

NQ

★ **HIGH:** 25235.75

★ **LOW:** 25061.25

★ **Bull Case** defend the 24750 to seek the 24812, 24833, 24912, 25000, 25106, 25250, 25312, 25333, 25412, 25500, 25612, 25633, 25750, 25812, 25833

★ **Bear Case** seal the 25250 to seek the 25106, 25000, 24912, 24833, 24812, 24750, 24633, 24500, 24412, 24333

★ **Overnight Range - 174.50**

NQ (Prev. Day)

★ High 25135.25

★ Low 24602.00

★ Close 25064.50

NQ (Week Open) 24455.75

S&P 500

★ **HIGH** - 6810.75

★ **LOW** - 6778.25

★ **Bull Case:** defend the 6750 to seek the 6762, 6777, 6788, 6800, 6812, 6817, 6826, 6833, 6850, 6862

★ **Bear Case:** seal the 6817 to seek the 6812, 6800, 6788, 6777, 6762, 6750, 6742, 6733, 6726, 6717, 6712, 6600, 6688, 6677, 6662, 6650, 6633, 6626

★ **Overnight Range** - 32.50

ES (Prev Day)

★ High 6792.50

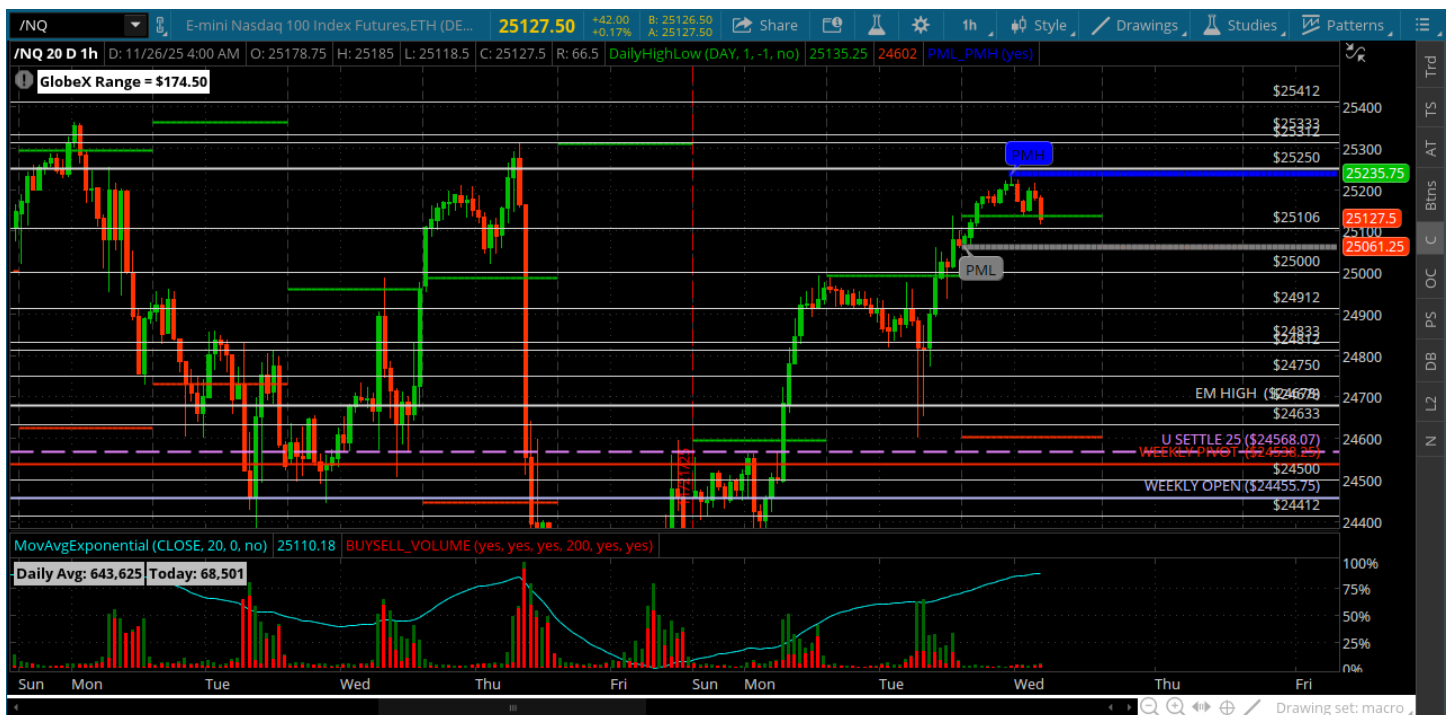
★ Low 6674.50

★ Close 6780.75

ES (Week Open) 6654.75

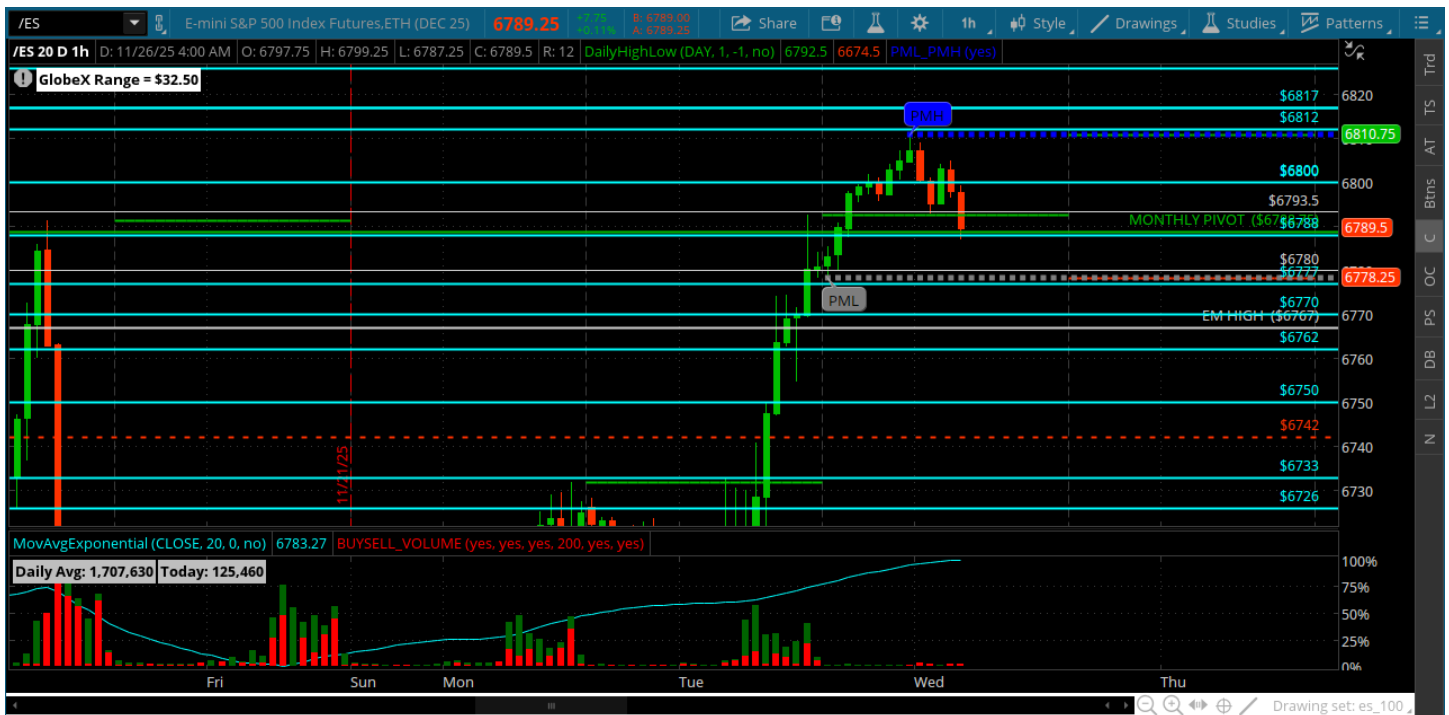
Pre-Market Charts to Watch

Wednesday, November 26, 2025 Pre-Market /NQ 1 Hour Chart



- 25250 is open for a test
- Looking for a test of 25000 for clues here -- bulls need to hold and close above that
- Day before Thanksgiving so not expecting much -- maybe a nice range to trade we will see
- Holiday trade today
-

Wednesday, November 26, 2025 Pre-Market /ES 1 Hour Chart



- 6800 tested overnight -- the holiday melt up is in effect
- Full day today and day before Thanksgiving so lets take what we can get
- Going to keep it simple and look for a few setups
- Want a test of 6762/70 to hold on a backtest

Disclaimer:

Disclaimer: Neither TheoTrade or any of its officers, directors, employees, other personnel, representatives, agents or independent contractors is, in such capacities, a licensed financial adviser, registered investment adviser, registered broker-dealer or FINRA|SIPC|NFA-member firm. TheoTrade does not provide investment or financial advice or make investment recommendations. TheoTrade is not in the business of transacting trades, nor does TheoTrade agree to direct your brokerage accounts or give trading advice tailored to your particular situation. Nothing contained in our content constitutes a solicitation, recommendation, promotion, or endorsement of any particular security, other investment product, transaction or investment. Trading Futures, Options on Futures, and retail off-exchange foreign currency transactions involves substantial risk of loss and is not suitable for all investors. You should carefully consider whether trading is suitable for you in light of your circumstances, knowledge, and financial resources. You may lose all or more of your initial investment. Opinions, market data, and recommendations are subject to change at any time. Past Performance is not necessarily indicative of future results.