



Tony Rago's Pre-Market Playbook

- ★ ES WEEKLY PIVOT 6782.00
- ★ NQ WEEKLY PIVOT 25115.33
- ★ ES MONTHLY PIVOT 6763.92
- ★ NQ MONTHLY PIVOT 25218.33
- ★ Overnight Range
 - ES 62.50
 - NQ 352.75
 - VIX 18.13
- ★ **Bulls** need to hold above yest closes **6830 and 25314-- long above these**
- ★ Breakouts are above yesterday's highs **6846 and 25376 - aggressive longs** (await for confirmation with a new high and a retest of the highs from above that holds)
- ★ **Bears** need under overnight lows **short under 6802 and 25193**
- ★ Breakdown is below yest lows **6778 and 25061 -- aggressive shorts** (wait for confirmation with a new low and a retest of the lows from below that hold)
- ★ **RANGEBOUND: 2 Way trade long and shorts will work** to get the day done
- ★ Keep it simple and be patient for confirmation on either side or establish the range if we are going to be rangebound
- ★ Confirm rally continuation with sustained trade over the 30min IB High and likewise
- ★ bearish under the IB Low

ECON:

- 9:45 am S&P final U.S. manufacturing PMI
- 10:00 am ISM manufacturing

Pre-Market Trading Levels for today

GLOBEX

NQ

★ **HIGH:** 25546.00

★ **LOW:** 25193.25

★ **Bull Case** defend the 25000 to seek the 25106, 25250, 25312, 25333, 25412, 25500, 25612, 25633, 25750, 25812, 25833

★ **Bear Case** seal the 25500 to seek the 25412, 25333, 25312, 25250, 25106, 25000, 24912, 24833, 24812, 24750, 24633, 24500, 24412, 24333

★ **Overnight Range - 352.75**

NQ (Prev. Day)

★ High 25376.00

★ Low 25061.25

★ Close 25314.00

NQ (Week Open) 25482.50

S&P 500

★ **HIGH** - 6864.50

★ **LOW** - 6802.00

★ **Bull Case:** defend the 6788 to seek the 6800, 6812, 6817, 6826, 6833, 6850, 6862, 6877, 6888, 6900, 6912, 6917

★ **Bear Case:** seal the 6862 to seek the 6850, 6833, 3833, 6826, 6817, 6812, 6800, 6788, 6777, 6762, 6750, 6742, 6733, 6726, 6717, 6712, 6700

★ **Overnight Range** - 62.50

ES (Prev Day)

★ High 6846.75

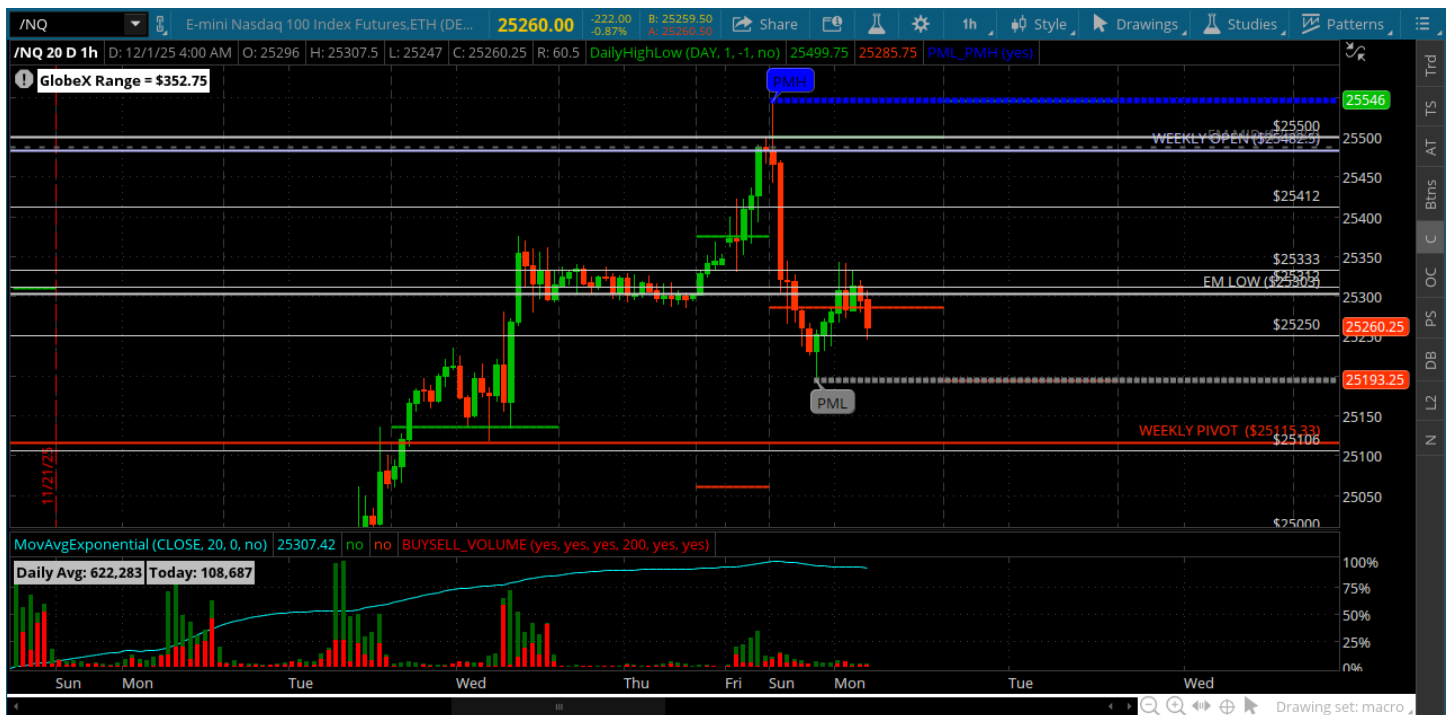
★ Low 6778.25

★ Close 6830.25

ES (Week Open) 6854.75

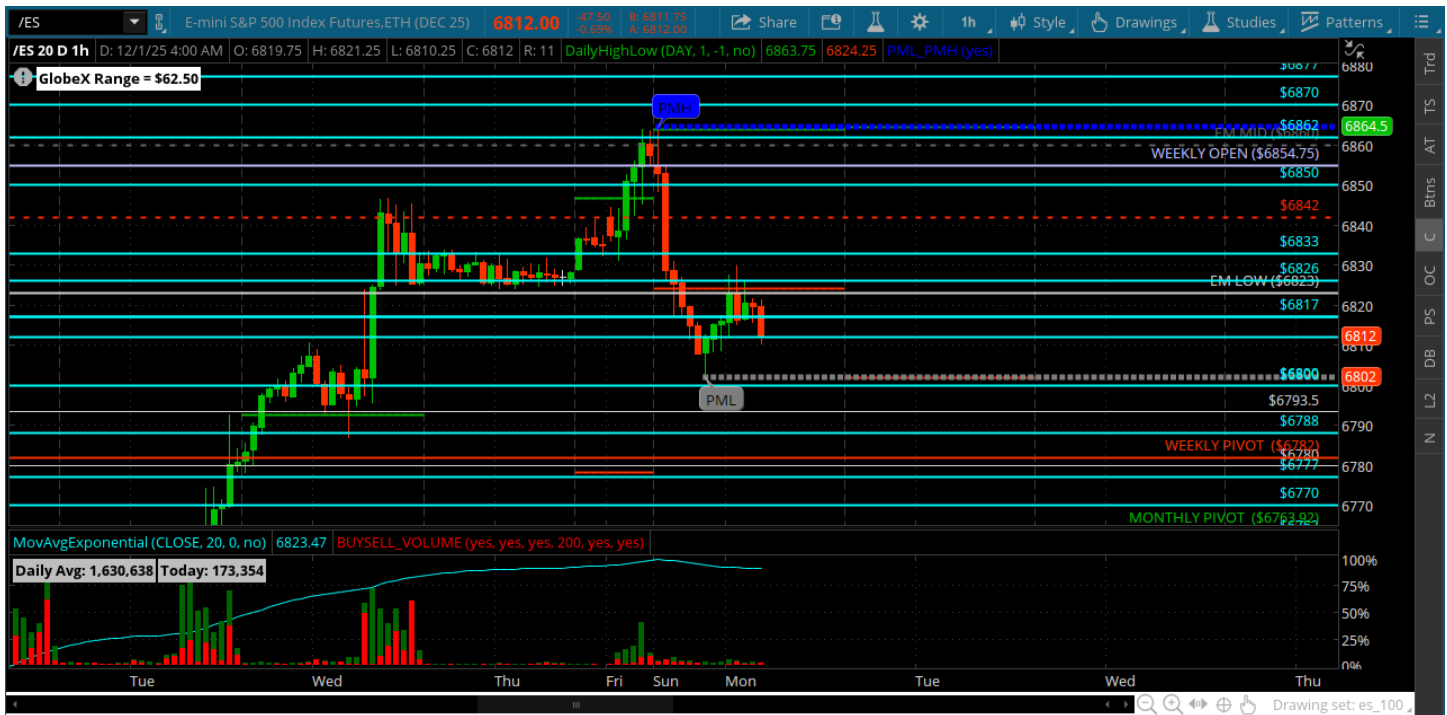
Pre-Market Charts to Watch

Monday, December 1, 2025 Pre-Market /NQ 1 Hour Chart



- 25106 is open for a test as long as the 25333 can hold as resistance
- Back above the 25333 seeks the 25412 and 25500
- Keep it simple today -- new month and last month of the year
- Weekly pivot could get a look today as well -- bullish above that

Monday, December 1, 2025 Pre-Market /ES 1 Hour Chart



- Weekly open was +200 from previous week
- 6800 is open for a test and bulls need to hold the 6788 and weekly pivot on a test from above
- Bears want to close below the 6800 and move back to the 6750
- New month so lets keep it simple today

Disclaimer:

Disclaimer: Neither TheoTrade or any of its officers, directors, employees, other personnel, representatives, agents or independent contractors is, in such capacities, a licensed financial adviser, registered investment adviser, registered broker-dealer or FINRA|SIPC|NFA-member firm. TheoTrade does not provide investment or financial advice or make investment recommendations. TheoTrade is not in the business of transacting trades, nor does TheoTrade agree to direct your brokerage accounts or give trading advice tailored to your particular situation. Nothing contained in our content constitutes a solicitation, recommendation, promotion, or endorsement of any particular security, other investment product, transaction or investment. Trading Futures, Options on Futures, and retail off-exchange foreign currency transactions involves substantial risk of loss and is not suitable for all investors. You should carefully consider whether trading is suitable for you in light of your circumstances, knowledge, and financial resources. You may lose all or more of your initial investment. Opinions, market data, and recommendations are subject to change at any time. Past Performance is not necessarily indicative of future results.