



Tony Rago's Pre-Market Playbook

★ Overnight Range

- ES 36.75
- NQ 184.00
- VIX 16.80

- ★ **Bulls** need to hold above yest closes **6826 and 25400-- long above these**
- ★ Breakouts are above yesterday's highs **6864 and 25546 - aggressive longs** (await for confirmation with a new high and a retest of the highs from above that holds)
- ★ **Bears** need under overnight lows **short under 6812 and 25324**
- ★ Breakdown is below yest lows **6802 and 25193 -- aggressive shorts** (wait for confirmation with a new low and a retest of the lows from below that hold)
- ★ **RANGEBOUND: 2 Way trade long and shorts will work** to get the day done
- ★ Keep it simple and be patient for confirmation on either side or establish the range if we are going to be rangebound
- ★ Confirm rally continuation with sustained trade over the 30min IB High and likewise
- ★ bearish under the IB Low

ECON:

- 10:00 am Fed Vice Chair for Supervision Michelle Bowman testifies

Pre-Market Trading Levels for today

GLOBEX

NQ

★ **HIGH:** 25508.75

★ **LOW:** 25324.75

★ **Bull Case** defend the 25106 to seek the 25250, 25312, 25333, 25412, 25500, 25612, 25633, 25750, 25812, 25833

★ **Bear Case** seal the 25612 to seek the 25500, 25412, 25333, 25312, 25250, 25106, 25000, 24912, 24833, 24812, 24750, 24633, 24500, 24412, 24333

★ **Overnight Range - 184.00**

NQ (Prev. Day)

★ High 25546.00

★ Low 25193.25

★ Close 25399.75

NQ (Week Open) 25482.50

S&P 500

★ **HIGH** - 6849.00

★ **LOW** - 6812.25

★ **Bull Case:** defend the 6788 to seek the 6800, 6812, 6817, 6826, 6833, 6850, 6862, 6877, 6888, 6900, 6912, 6917

★ **Bear Case:** seal the 6862 to seek the 6850, 6833, 3833, 6826, 6817, 6812, 6800, 6788, 6777, 6762, 6750, 6742, 6733, 6726, 6717, 6712, 6700

★ **Overnight Range** - 36.75

ES (Prev Day)

★ High 6864.50

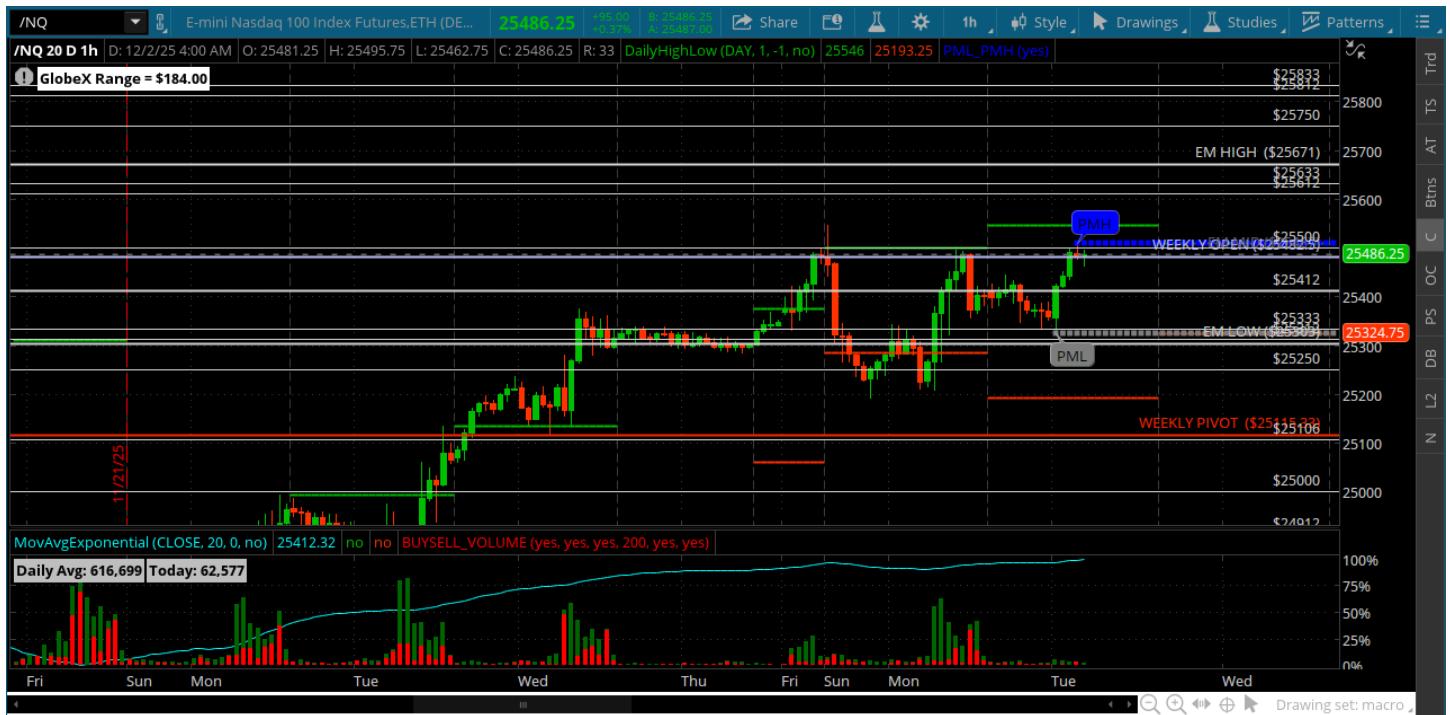
★ Low 6802.00

★ Close 6826.75

ES (Week Open) 6854.75

Pre-Market Charts to Watch

Tuesday, December 2, 2025 Pre-Market /NQ 1 Hour Chart



- 25106 is still open for a test if we can get back below 25250
- Above the 25500 seeks the 25612/25633
- We could live in this range until we get some news from Fed
- Trade what we see and do not get too anticipatory

Tuesday, December 2, 2025 Pre-Market /ES 1 Hour Chart



- Weekly open is resistance for now
- Bears need to hold the 6850 and move back to the 6800 that is left open
- There is a lot of fomo in this tape with eager buyers so most dips, even the smallest get snapped up
- This could be our range again so lets trade what is in front of us and get what we need out of the tape
-

Disclaimer:

Disclaimer: Neither TheoTrade or any of its officers, directors, employees, other personnel, representatives, agents or independent contractors is, in such capacities, a licensed financial adviser, registered investment adviser, registered broker-dealer or FINRA|SIPC|NFA-member firm. TheoTrade does not provide investment or financial advice or make investment recommendations. TheoTrade is not in the business of transacting trades, nor does TheoTrade agree to direct your brokerage accounts or give trading advice tailored to your particular situation. Nothing contained in our content constitutes a solicitation, recommendation, promotion, or endorsement of any particular security, other investment product, transaction or investment. Trading Futures, Options on Futures, and retail off-exchange foreign currency transactions involves substantial risk of loss and is not suitable for all investors. You should carefully consider whether trading is suitable for you in light of your circumstances, knowledge, and financial resources. You may lose all or more of your initial investment. Opinions, market data, and recommendations are subject to change at any time. Past Performance is not necessarily indicative of future results.