



Tony Rago's Pre-Market Playbook

★ Overnight Range

- ES 20.50
- NQ 102.25
- VIX 25.00

- ★ **Bulls** need to hold above yest closes **6842 and 25603-- long above these**
- ★ Breakouts are above yesterday's highs **6863 and 25670 - aggressive longs** (await for confirmation with a new high and a retest of the highs from above that holds)
- ★ **Bears** need under overnight lows **short under 6837 and 25576**
- ★ Breakdown is below yest lows **6812 and 25324 -- aggressive shorts** (wait for confirmation with a new low and a retest of the lows from below that hold)
- ★ **RANGEBOUND: 2 Way trade long and shorts will work** to get the day done
- ★ Keep it simple and be patient for confirmation on either side or establish the range if we are going to be rangebound
- ★ Confirm rally continuation with sustained trade over the 30min IB High and likewise
- ★ bearish under the IB Low

ECON:

- 8:15 am ADP employment Nov.
- 9:15 am Industrial production (delayed report) Sept.
- 9:45 am S&P final U.S. services PMI Nov
- 10:00 am ISM services

Pre-Market Trading Levels for today

GLOBEX

NQ

★ **HIGH:** 25678.25

★ **LOW:** 25576.00

★ **Bull Case** defend the 25412 to seek the 25500, 25612, 25633, 25750, 25812, 25833, 25912, 26000, 26106, 26250, 26312, 26333

★ **Bear Case** seal the 25750 to seek the 25633, 25612, 25500, 25412, 25333, 25312, 25250, 25106, 25000, 24912, 24833, 24812, 24750, 24633, 24500, 24412, 24333

★ **Overnight Range - 102.25**

NQ (Prev. Day)

★ High 25670.00

★ Low 25324.75

★ Close 25603.75

NQ (Week Open) 25482.50

S&P 500

★ **HIGH** - 6862.25

★ **LOW** - 6837.25

★ **Bull Case:** defend the 6800 to seek the 6812, 6817, 6826, 6833, 6850, 6862, 6877, 6888, 6900, 6912, 6917

★ **Bear Case:** seal the 6888 to seek the 6877, 6862, 6850, 6833, 3833, 6826, 6817, 6812, 6800, 6788, 6777, 6762, 6750, 6742, 6733, 6726, 6717, 6712, 6700

★ **Overnight Range** - 25.00

ES (Prev Day)

★ High 6863.50

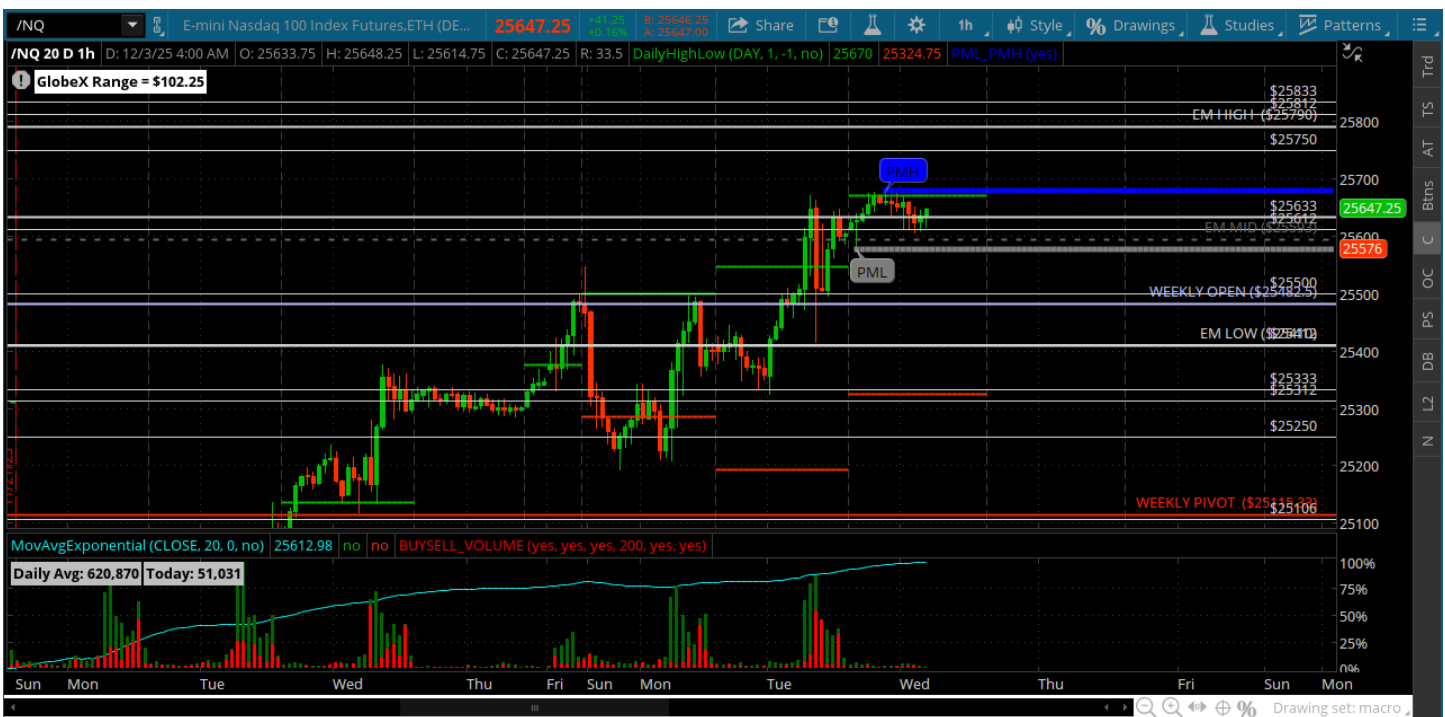
★ Low 6812.25

★ Close 6842.75

ES (Week Open) 6854.75

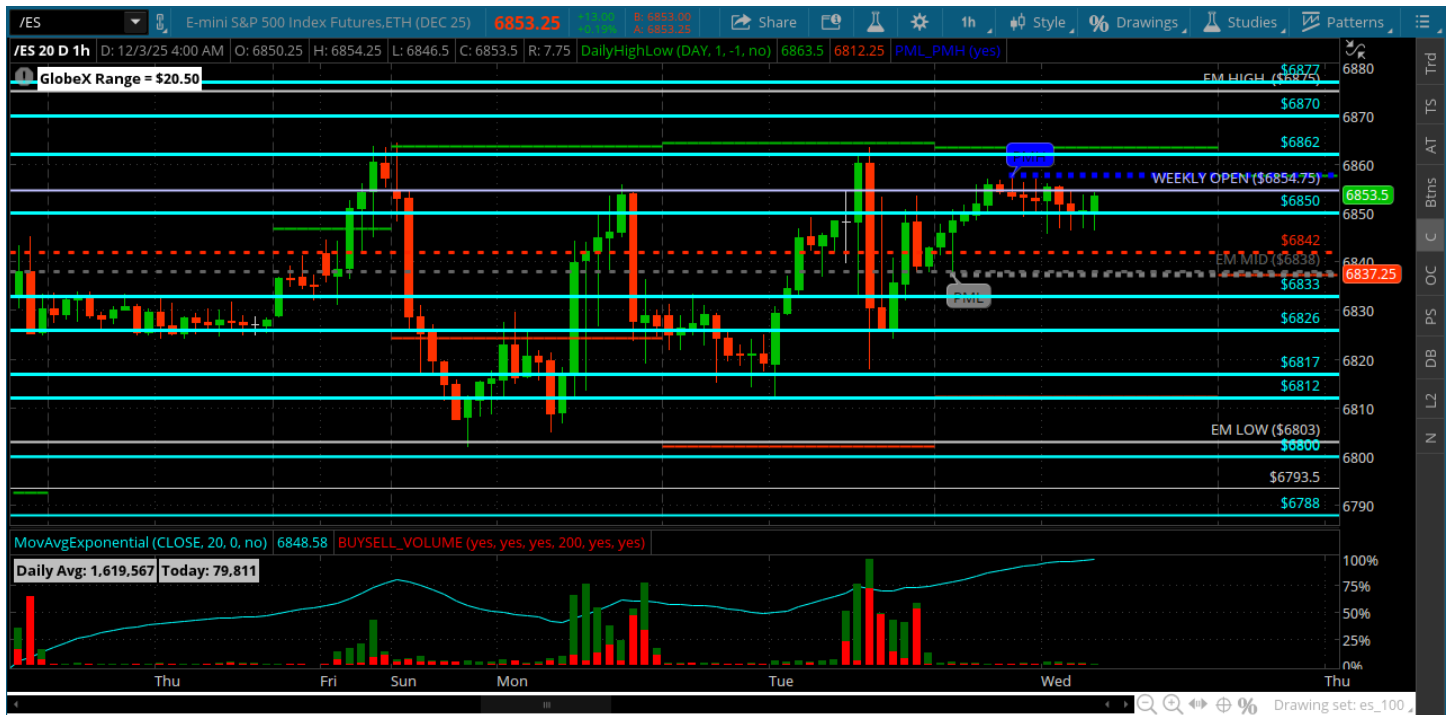
Pre-Market Charts to Watch

Wednesday, December 3, 2025 Pre-Market /NQ 1 Hour Chart



- 25750 is open for a test if bulls can hold the overnight lows and the 25612
- Under the 25612 could pullback to the 25500 and 25412 and start a larger pullback
- Buyers are not very aggressive at these highs so maybe a pullback is in the works
- Lets keep an eye on the 25500 and the weekly open for clues

Wednesday, December 3, 2025 Pre-Market /ES 1 Hour Chart



- Weekly open is still resistance and capping the range at the moment
- Sideways action and contraction means expansion is coming
- NQ is trying to lead but ES is not coming with
- Bulls need a push above the 6862 and convert the weekly open to support
- Longer time frames are stretched so watching for expansion to the downside but be ready for anything

Disclaimer:

Disclaimer: Neither TheoTrade or any of its officers, directors, employees, other personnel, representatives, agents or independent contractors is, in such capacities, a licensed financial adviser, registered investment adviser, registered broker-dealer or FINRA|SIPC|NFA-member firm. TheoTrade does not provide investment or financial advice or make investment recommendations. TheoTrade is not in the business of transacting trades, nor does TheoTrade agree to direct your brokerage accounts or give trading advice tailored to your particular situation. Nothing contained in our content constitutes a solicitation, recommendation, promotion, or endorsement of any particular security, other investment product, transaction or investment. Trading Futures, Options on Futures, and retail off-exchange foreign currency transactions involves substantial risk of loss and is not suitable for all investors. You should carefully consider whether trading is suitable for you in light of your circumstances, knowledge, and financial resources. You may lose all or more of your initial investment. Opinions, market data, and recommendations are subject to change at any time. Past Performance is not necessarily indicative of future results.