



Tony Rago's Pre-Market Playbook

★ Overnight Range

- ES 25.00
- NQ 129.75
- VIX 17.36

- ★ **Bulls** need to hold above yest closes **6846** and **25676**-- long above these
- ★ Breakouts are above yesterday's highs **6872** and **25735** - **aggressive longs** (await for confirmation with a new high and a retest of the highs from above that holds)
- ★ **Bears** need under overnight lows **short under 6834** and **25616**
- ★ Breakdown is below yest lows **6844** and **25560** -- **aggressive shorts** (wait for confirmation with a new low and a retest of the lows from below that hold)
- ★ **RANGEBOUND: 2 Way trade long and shorts will work** to get the day done
- ★ Keep it simple and be patient for confirmation on either side or establish the range if we are going to be rangebound
- ★ Confirm rally continuation with sustained trade over the 30min IB High and likewise
- ★ bearish under the IB Low

ECON:

- 8:30 am Employment cost index (delayed report)
- 2:00 pm FOMC interest-rate decision
- 2:00 pm Monthly U.S. federal budget
- 2:30 pm Fed Chair Powell press conference

Pre-Market Trading Levels for today

GLOBEX

NQ

★ **HIGH:** 25745.75

★ **LOW:** 25616.00

★ **Bull Case** defend the 25500 to seek the 25612, 25633, 25750, 25812, 25833, 25912, 26000, 26106, 26250, 26312, 26333

★ **Bear Case** seal the 25833 to seek the 25812, 25750, 25633, 25612, 25500, 25412, 25333, 25312, 25250, 25106, 25000, 24912, 24833, 24812, 24750, 24633, 24500, 24412, 24333

★ **Overnight Range - 129.75**

NQ (Prev. Day)

★ High 25735.75

★ Low 25560.00

★ Close 25676.25

NQ (Week Open) 25750.00

S&P 500

★ **HIGH** - 6859.25

★ **LOW** - 6834.25

★ **Bull Case:** defend the 6842 to seek the 6850, 6862, 6877, 6888, 6900, 6912, 6917, 6926, 6933

★ **Bear Case:** seal the 6912 to seek the 6900, 6888, 6877, 6862, 6850, 6833, 3833, 6826, 6817, 6812, 6800, 6788, 6777, 6762, 6750, 6742, 6733, 6726, 6717, 6712, 6700

★ **Overnight Range** - 25.00

ES (Prev Day)

★ High 6872.75

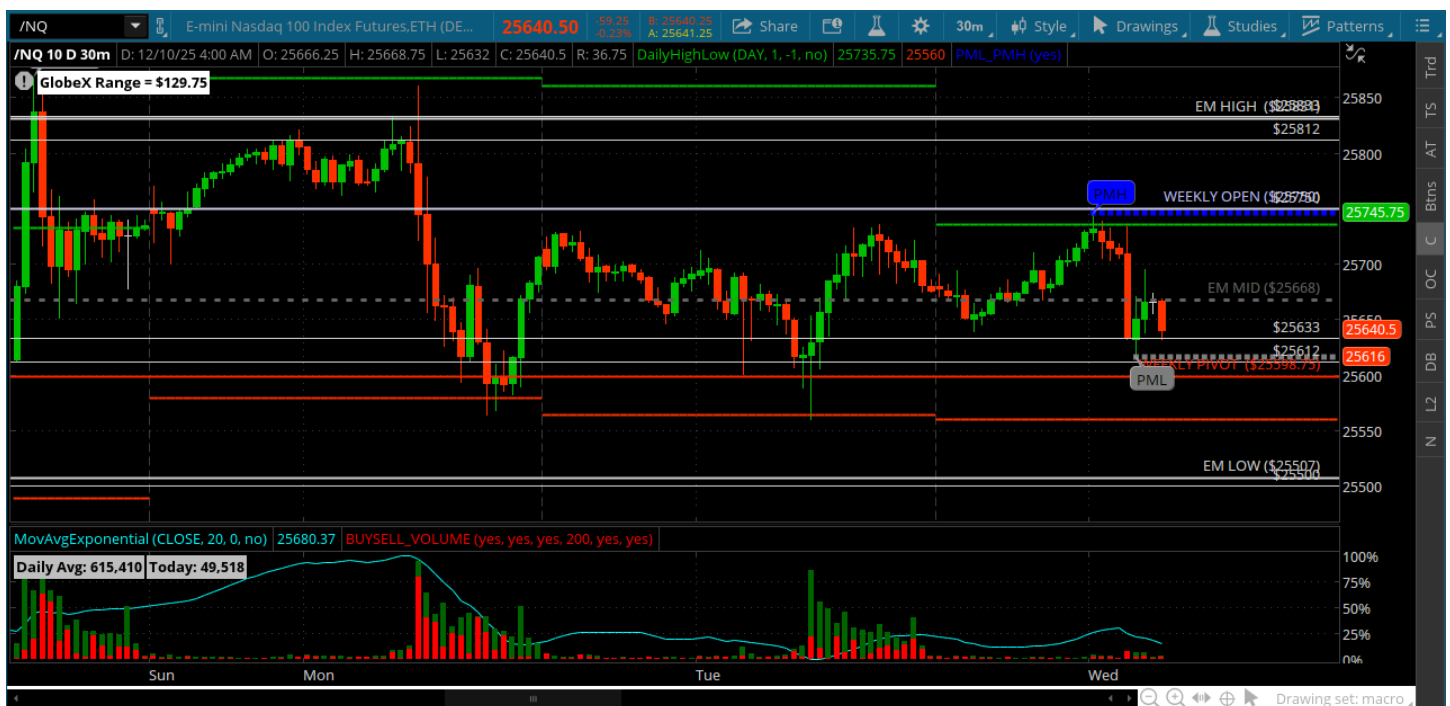
★ Low 6844.00

★ Close 6846.25

ES (Week Open) 6883.00

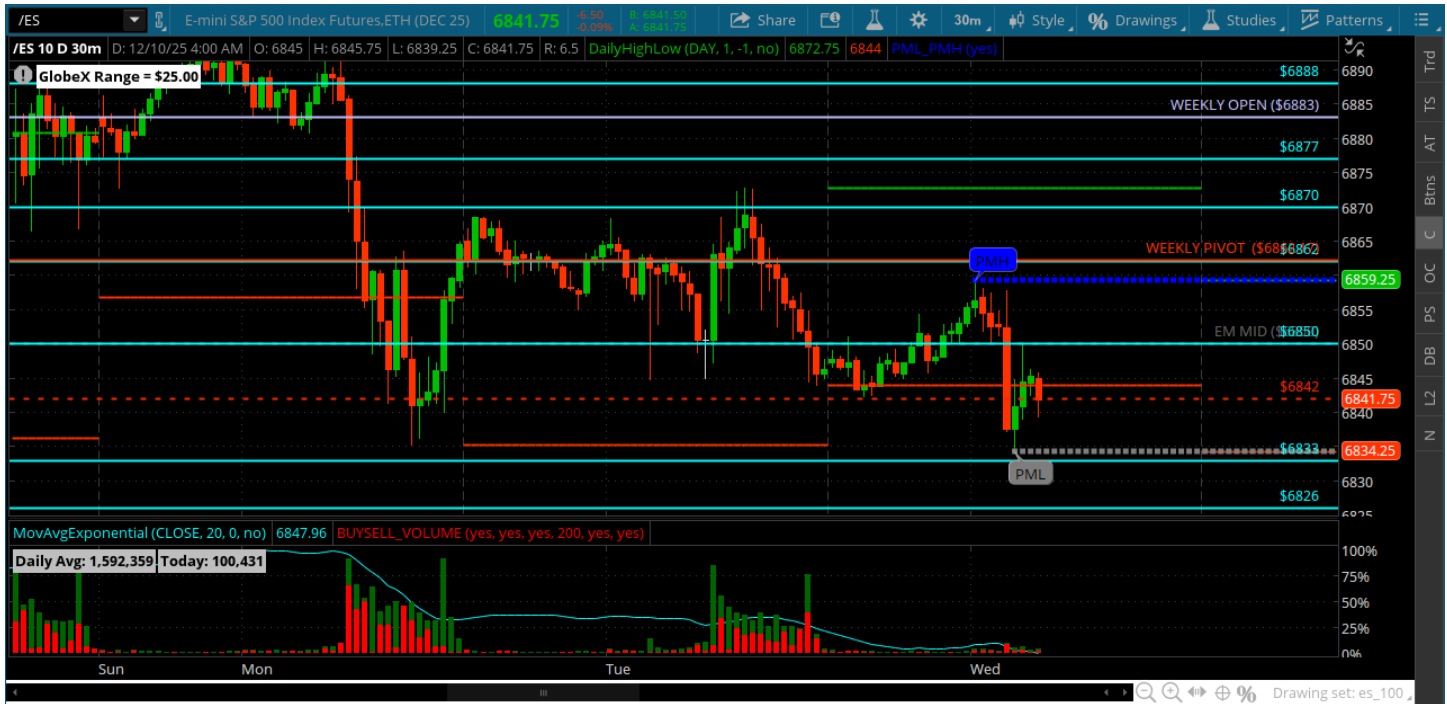
Pre-Market Charts to Watch

Wednesday, December 10, 2025 Pre-Market /NQ 1 Hour Chart



- FED DAY - FOMC at 2pm eastern
- Should be a few trades in the am and tape gets slow as we get to the announcement
- Keep in mind the press conference at 2:30 is where the real move comes from

Wednesday, December 10, 2025 Pre-Market /ES 1 Hour Chart



- FED DAY - will be playing it close to vest as we head to the 2pm announcement
- All about the reaction and the fallout from the press conference
- Should be plenty of vol in the last couple hours of the tape

Disclaimer:

Disclaimer: Neither TheoTrade or any of its officers, directors, employees, other personnel, representatives, agents or independent contractors is, in such capacities, a licensed financial adviser, registered investment adviser, registered broker-dealer or FINRA|SIPC|NFA-member firm. TheoTrade does not provide investment or financial advice or make investment recommendations. TheoTrade is not in the business of transacting trades, nor does TheoTrade agree to direct your brokerage accounts or give trading advice tailored to your particular situation. Nothing contained in our content constitutes a solicitation, recommendation, promotion, or endorsement of any particular security, other investment product, transaction or investment. Trading Futures, Options on Futures, and retail off-exchange foreign currency transactions involves substantial risk of loss and is not suitable for all investors. You should carefully consider whether trading is suitable for you in light of your circumstances, knowledge, and financial resources. You may lose all or more of your initial investment. Opinions, market data, and recommendations are subject to change at any time. Past Performance is not necessarily indicative of future results.