



## *Tony Rago's Pre-Market Playbook*

---

### ★ Overnight Range

- ES 73.75
- NQ 413.00
- VIX 15.91

- ★ **Bulls** need to hold above yest closes **6893 and 25800-- long above these**
- ★ Breakouts are above yesterday's highs **6908 and 25870 - aggressive longs** (await for confirmation with a new high and a retest of the highs from above that holds)
- ★ **Bears** need under overnight lows **short under 6817 and 25383**
- ★ Breakdown is below yest lows **6830 and 25528 -- aggressive shorts** (wait for confirmation with a new low and a retest of the lows from below that hold)
- ★ **RANGEBOUND: 2 Way trade long and shorts will work** to get the day done
- ★ Keep it simple and be patient for confirmation on either side or establish the range if we are going to be rangebound
- ★ Confirm rally continuation with sustained trade over the 30min IB High and likewise
- ★ bearish under the IB Low

### ECON:

- 8:30 am Initial jobless claims
- 8:30 am U.S. trade deficit

## *Pre-Market Trading Levels for today*

---

### GLOBEX

#### NQ

★ **HIGH:** 25796.00

★ **LOW:** 25383.00

★ **Bull Case** defend the 25500 to seek the 25612, 25633, 25750, 25812, 25833, 25912, 26000, 26106, 26250, 26312, 26333

★ **Bear Case** seal the 25833 to seek the 25812, 25750, 25633, 25612, 25500, 25412, 25333, 25312, 25250, 25106, 25000, 24912, 24833, 24812, 24750, 24633, 24500, 24412, 24333

★ **Overnight Range - 413.00**

#### NQ (Prev. Day)

★ High 25870.75

★ Low 25528.75

★ Close 25800.50

**NQ (Week Open) 25750.00**

## S&P 500

★ **HIGH** - 6891.25

★ **LOW** - 6817.50

★ **Bull Case:** defend the 6833 to seek the 6842, 6850, 6862, 6877, 6888, 6900, 6912, 6917, 6926, 6933

★ **Bear Case:** seal the 6912 to seek the 6900, 6888, 6877, 6862, 6850, 6833, 3833, 6826, 6817, 6812, 6800, 6788, 6777, 6762, 6750, 6742, 6733, 6726, 6717, 6712, 6700

★ **Overnight Range** - 73.75

### ES (Prev Day)

★ High 6908.00

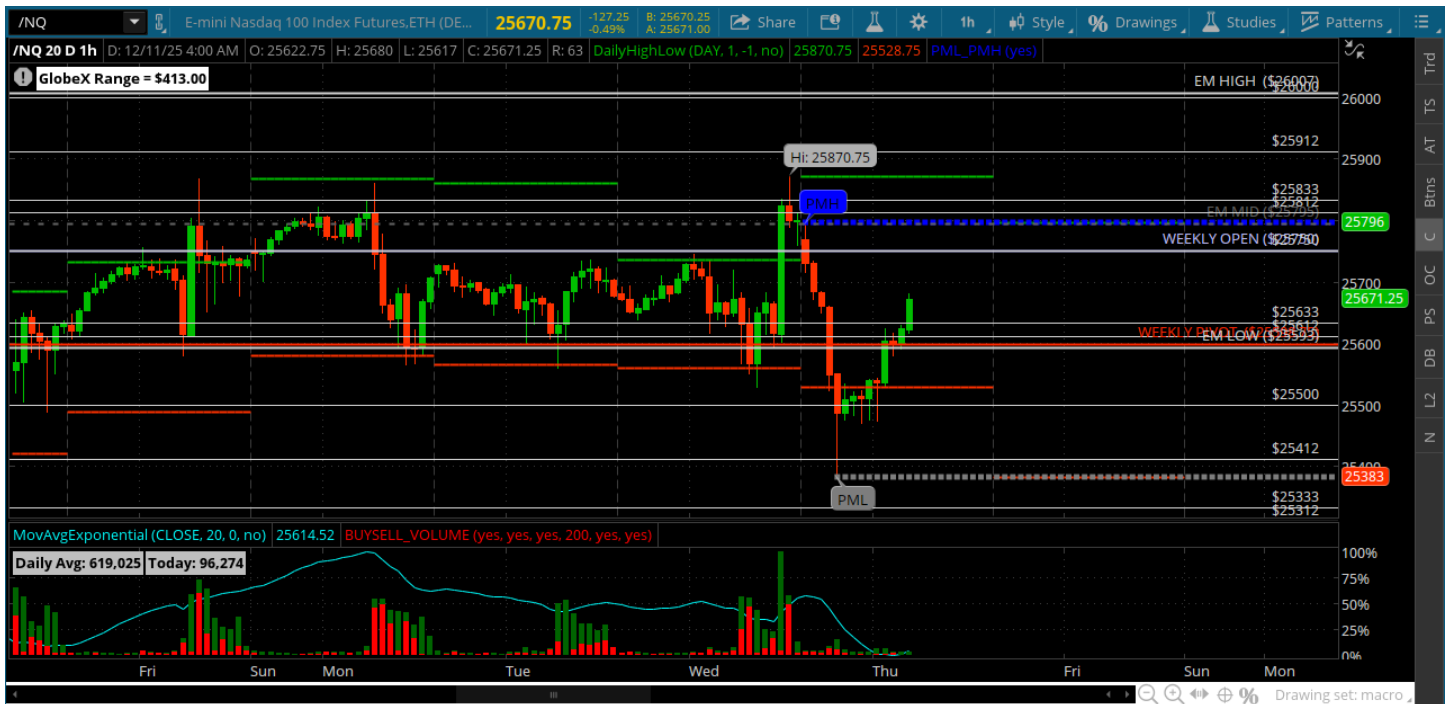
★ Low 6830.75

★ Close 6893.25

**ES (Week Open) 6883.00**

## Pre-Market Charts to Watch

### Thursday, December 11, 2025 Pre-Market /NQ 1 Hour Chart



- BIG push down overnight after FOMC close and back into this zone here
- Back below the weekly open as we head into the RTH open
- Will be all about the weekly pivot for the bulls from here -- can they hold on a retest?
- Could be another big trading range today - bears need to get and stay below 25500

## Thursday, December 10, 2025 Pre-Market /ES 1 Hour Chart



- Retraced the entire FOMC bar and swept Tuesdays low
- Back above weekly pivot as we head into the RTH but still under weekly open
- Could be a big range to trade today so keep an eye on weekly pivot as a bull/bear line
- Under the 6833 can retest the overnight lows and the 6800

*Disclaimer:*

Disclaimer: Neither TheoTrade or any of its officers, directors, employees, other personnel, representatives, agents or independent contractors is, in such capacities, a licensed financial adviser, registered investment adviser, registered broker-dealer or FINRA|SIPC|NFA-member firm. TheoTrade does not provide investment or financial advice or make investment recommendations. TheoTrade is not in the business of transacting trades, nor does TheoTrade agree to direct your brokerage accounts or give trading advice tailored to your particular situation. Nothing contained in our content constitutes a solicitation, recommendation, promotion, or endorsement of any particular security, other investment product, transaction or investment. Trading Futures, Options on Futures, and retail off-exchange foreign currency transactions involves substantial risk of loss and is not suitable for all investors. You should carefully consider whether trading is suitable for you in light of your circumstances, knowledge, and financial resources. You may lose all or more of your initial investment. Opinions, market data, and recommendations are subject to change at any time. Past Performance is not necessarily indicative of future results.