



Tony Rago's Pre-Market Playbook

- ★ ESH26 WEEKLY PIVOT 6915.08
- ★ NQH26 WEEKLY PIVOT 25651.33
- ★ Overnight Range
 - ES 48.75
 - NQ 232.75
 - VIX 16.40
 - Trading the H26 Contracts starting today
- ★ **Bulls** need to hold above yest closes **6893 and 25459-- long above these**
- ★ Breakouts are above yesterday's highs **6975 and 25990 - aggressive longs** (await for confirmation with a new high and a retest of the highs from above that holds)
- ★ **Bears** need under overnight lows **short under 6878 and 25385**
- ★ Breakdown is below yest lows **6864 and 25371 -- aggressive shorts** (wait for confirmation with a new low and a retest of the lows from below that hold)
- ★ **RANGEBOUND: 2 Way trade long and shorts will work** to get the day done
- ★ Keep it simple and be patient for confirmation on either side or establish the range if we are going to be rangebound
- ★ Confirm rally continuation with sustained trade over the 30min IB High and likewise
- ★ bearish under the IB Low

ECON:

- 8:30 am Empire State manufacturing survey
- 9:30 am Fed governor Stephen Miran speaks
- 10:00 am Home builder confidence index
- 10:30 am New York Fed President John Williams speaks

Pre-Market Trading Levels for today

GLOBEX

NQ

★ HIGH: 25617.75

★ LOW: 25385.00

★ **Bull Case** defend the 25500 to seek the 25612, 25633, 25750, 25812, 25833, 25912, 26000, 26106, 26250, 26312, 26333

★ **Bear Case** seal the 25833 to seek the 25812, 25750, 25633, 25612, 25500, 25412, 25333, 25312, 25250, 25106, 25000, 24912, 24833, 24812, 24750, 24633, 24500, 24412, 24333

★ **Overnight Range - 232.75**

NQH26 (Prev. Day)

★ High 25990.75

★ Low 25371.50

★ Close 25459.00

NQ (Week Open) 25463.25

S&P 500

★ **HIGH** - 6926.75

★ **LOW** - 6878.00

★ **Bull Case:** defend the 6877 to seek the 6888, 6900, 6912, 6917, 6926, 6933

★ **Bear Case:** seal the 6933 to seek the 6926, 6917, 6912, 6900, 6888, 6877, 6862, 6850, 6833, 3833, 6826, 6817, 6812, 6800, 6788

★ **Overnight Range** - 48.75

ESH26 (Prev Day)

★ High 6975.25

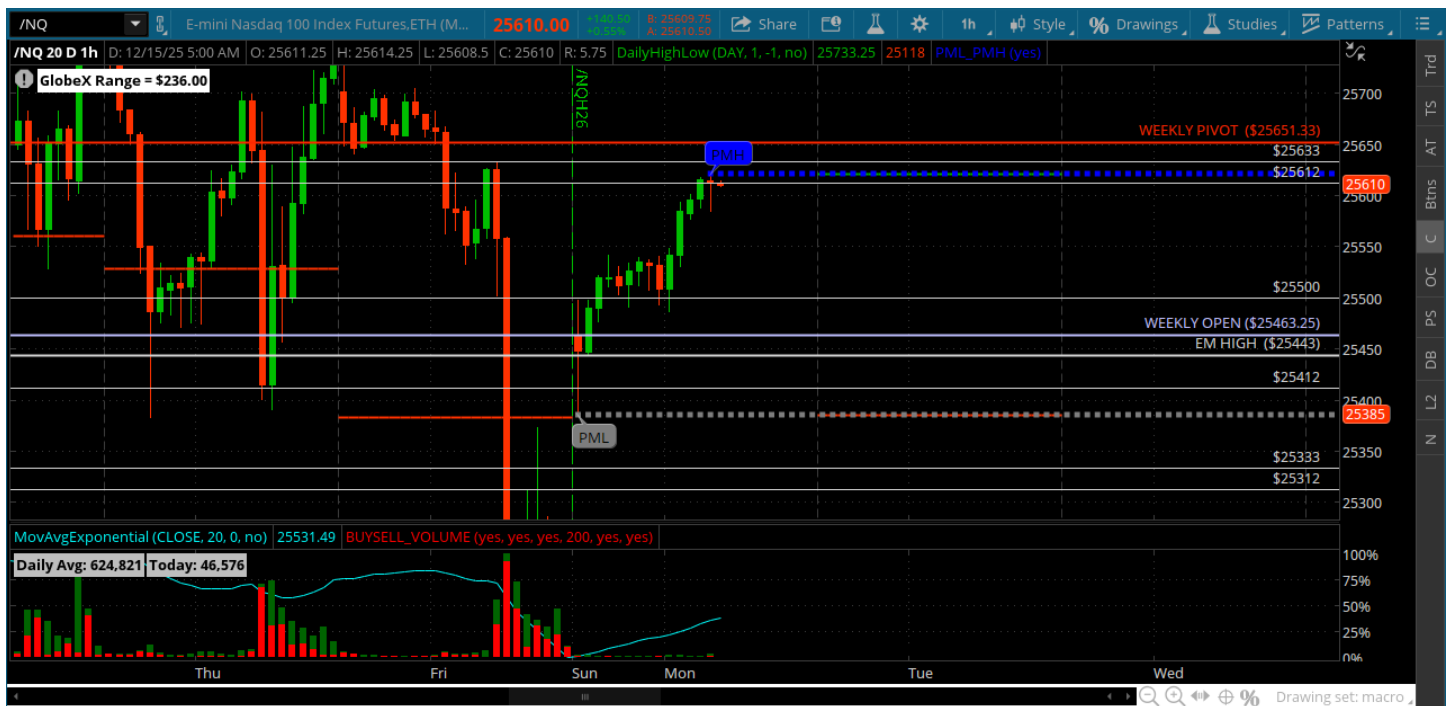
★ Low 6864.00

★ Close 6893.25

ES (Week Open) 6890.00

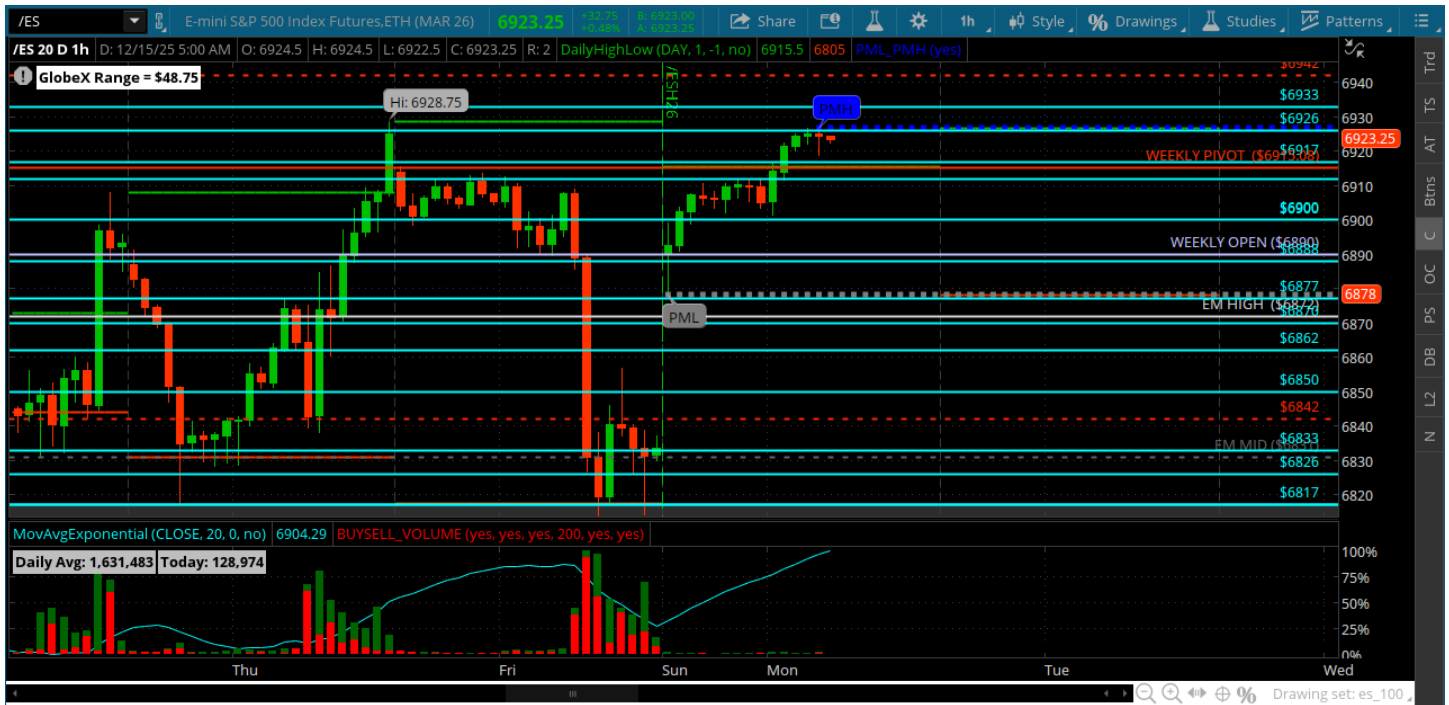
Pre-Market Charts to Watch

Monday, December 15, 2025 Pre-Market /NQ 1 Hour Chart



- We have rolled to the new H26 contract on TOS - will start trading that today
- Would like to see a pullback to the 25500 for some clues - weekly pivot is resistance for now
- Above that can rally and bulls want to close above it
- Bulls need to defend the weekly open and the 25500

Monday, December 15, 2025 Pre-Market /ES 1 Hour Chart



- Trading the H26 contract starting today
- Bulls need to defend the 6900 and weekly open on a pullback
- The ES is being held back by the NQ imo and NQ needs to rally to help ES push to a new all time high
- Under the weekly pivot price can reach down to the 6900 for a test with a backstop at the 6890 weekly open
- If those do not hold we could see a deeper pullback to the 6850

Disclaimer:

Disclaimer: Neither TheoTrade or any of its officers, directors, employees, other personnel, representatives, agents or independent contractors is, in such capacities, a licensed financial adviser, registered investment adviser, registered broker-dealer or FINRA|SIPC|NFA-member firm. TheoTrade does not provide investment or financial advice or make investment recommendations. TheoTrade is not in the business of transacting trades, nor does TheoTrade agree to direct your brokerage accounts or give trading advice tailored to your particular situation. Nothing contained in our content constitutes a solicitation, recommendation, promotion, or endorsement of any particular security, other investment product, transaction or investment. Trading Futures, Options on Futures, and retail off-exchange foreign currency transactions involves substantial risk of loss and is not suitable for all investors. You should carefully consider whether trading is suitable for you in light of your circumstances, knowledge, and financial resources. You may lose all or more of your initial investment. Opinions, market data, and recommendations are subject to change at any time. Past Performance is not necessarily indicative of future results.