



## *Tony Rago's Pre-Market Playbook*

---

### ★ Overnight Range

- ES 61.50
- NQ 344.00
- VIX 16.65

- ★ **Bulls** need to hold above yest closes **6786 and 24951**-- long above these
- ★ Breakouts are above yesterday's highs **6882 and 25508** - **aggressive longs** (await for confirmation with a new high and a retest of the highs from above that holds)
- ★ **Bears** need under overnight lows **short under 6771 and 24901**
- ★ Breakdown is below yest lows **6775 and 24887** -- **aggressive shorts** (wait for confirmation with a new low and a retest of the lows from below that hold)
- ★ **RANGEBOUND: 2 Way trade long and shorts will work** to get the day done
- ★ Keep it simple and be patient for confirmation on either side or establish the range if we are going to be rangebound
- ★ Confirm rally continuation with sustained trade over the 30min IB High and likewise
- ★ bearish under the IB Low

### ECON:

- 8:30 am Initial jobless claims
- 8:30 am CPI
- 8:30 am Philadelphia Fed manufacturing survey

## *Pre-Market Trading Levels for today*

---

### GLOBEX

#### NQ

★ **HIGH:** 25245.25

★ **LOW:** 24901.25

★ **Bull Case** defend the 25000 to seek the 25106, 25250, 25312, 25333, 25412, 25500, 25612, 25633, 25750, 25812, 25833, 25912, 26000, 26106, 26250, 26312, 26333

★ **Bear Case** seal the 25333 to seek the 25312, 25250, 25106, 25000, 24912, 24833, 24750, 24633, 24612

★ **Overnight Range - 213.25**

#### NQ (Prev. Day)

★ High 25508.50

★ Low 24887.75

★ Close 24951.75

**NQ (Week Open) 25463.25**

## S&P 500

★ **HIGH** - 6835.00

★ **LOW** - 6771.50

★ **Bull Case:** defend the 6788 to seek the 6800, 6812, 6817, 6826, 6833, 6850, 6862, 6877, 6888, 6900, 6912, 6917, 6926, 6933

★ **Bear Case:** seal the 6850 to seek the 6833, 3833, 6826, 6817, 6812, 6800, 6788, 6777, 6762, 6750, 6733

★ **Overnight Range** - 40.50

### ES (Prev Day)

★ High 6882.50

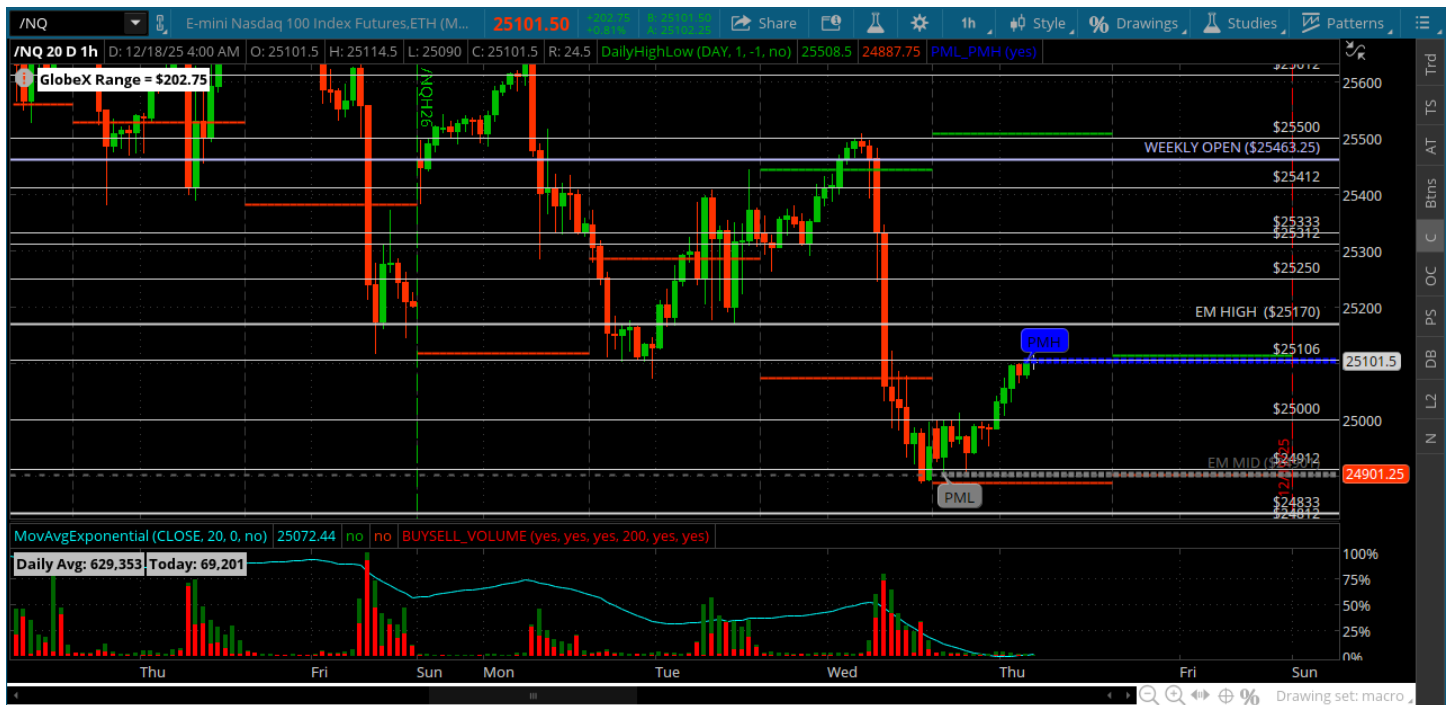
★ Low 6775.50

★ Close 6786.50

**ES (Week Open) 6890.00**

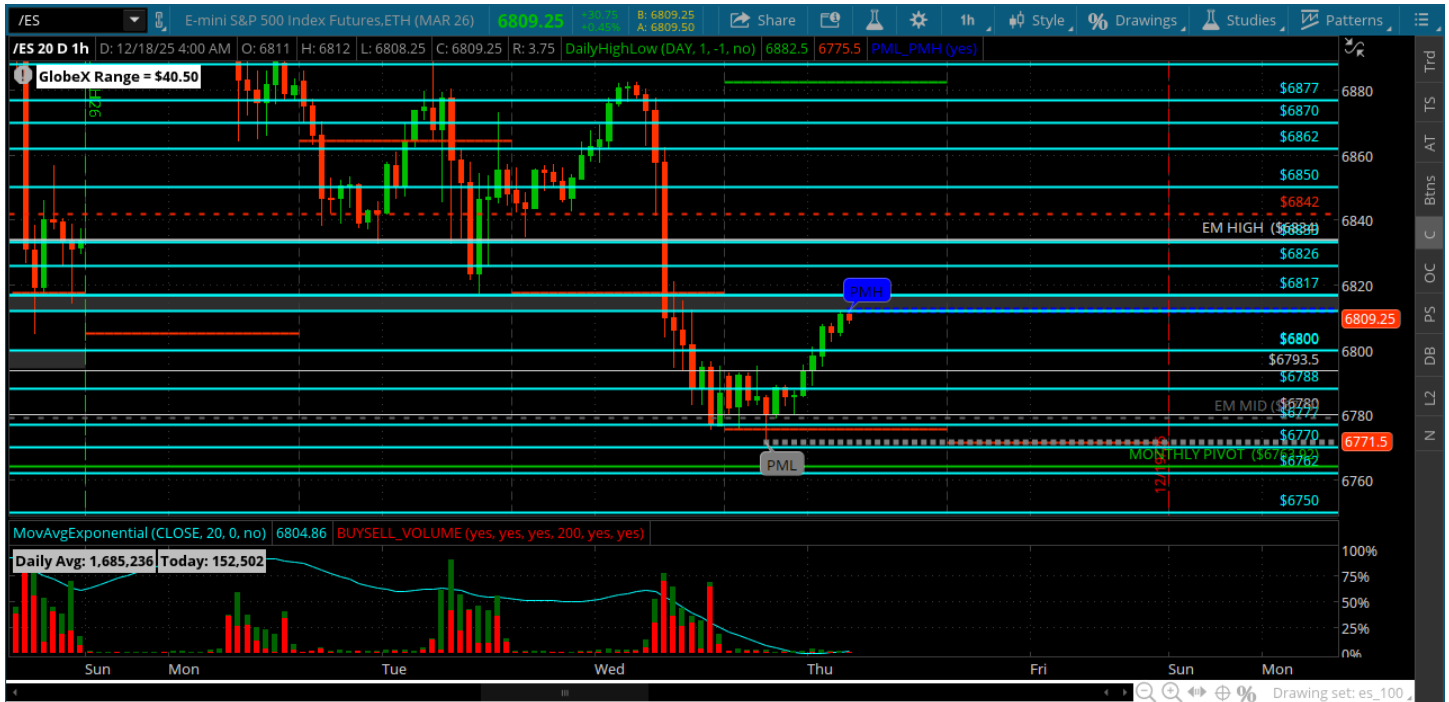
## Pre-Market Charts to Watch

### Thursday, December 18, 2025 Pre-Market /NQ 1 Hour Chart



- BIG trend down day yesterday that got all the way down to the 25k and 24912
- Bulls are struggling and need to find some footing -- the 25000 roundy needs to hold for them and close above -- they really need to close back above the 25250
- Bears have momentum and if a continuation day today can take this all the way down to the 24633/24612
- Lets see how we open

## Thursday, December 18, 2025 Pre-Market /ES 1 Hour Chart



- Big distribution day down to the 6777 -- key for bulls to fight back would be to hold the 6800 and move back up to the 6850/6862 area
- Bears have the advantage and if they have another day they could take us back down to the 6733/6726
- Bulls need to get and stay above the 6826 today lets see

*Disclaimer:*

Disclaimer: Neither TheoTrade or any of its officers, directors, employees, other personnel, representatives, agents or independent contractors is, in such capacities, a licensed financial adviser, registered investment adviser, registered broker-dealer or FINRA|SIPC|NFA-member firm. TheoTrade does not provide investment or financial advice or make investment recommendations. TheoTrade is not in the business of transacting trades, nor does TheoTrade agree to direct your brokerage accounts or give trading advice tailored to your particular situation. Nothing contained in our content constitutes a solicitation, recommendation, promotion, or endorsement of any particular security, other investment product, transaction or investment. Trading Futures, Options on Futures, and retail off-exchange foreign currency transactions involves substantial risk of loss and is not suitable for all investors. You should carefully consider whether trading is suitable for you in light of your circumstances, knowledge, and financial resources. You may lose all or more of your initial investment. Opinions, market data, and recommendations are subject to change at any time. Past Performance is not necessarily indicative of future results.