



Tony Rago's Pre-Market Playbook

★ Overnight Range

- ES 21.50
- NQ 130.50
- VIX 14.37

- ★ **Bulls** need to hold above yest closes **6930 and 25700-- long above these**
- ★ Breakouts are above yesterday's highs **6936 and 25795 - aggressive longs** (await for confirmation with a new high and a retest of the highs from above that holds)
- ★ **Bears** need under overnight lows **short under 6922 and 25653**
- ★ Breakdown is below yest lows **6900 and 25628 -- aggressive shorts** (wait for confirmation with a new low and a retest of the lows from below that hold)
- ★ **RANGEBOUND: 2 Way trade long and shorts will work** to get the day done
- ★ Keep it simple and be patient for confirmation on either side or establish the range if we are going to be rangebound
- ★ Confirm rally continuation with sustained trade over the 30min IB High and likewise
- ★ bearish under the IB Low

ECON:

- 8:30 am GDP (delayed report)
- 8:30 am Durable-goods orders (delayed report) Oct.
- 9:15 am Industrial production
- 10:00 am Consumer confidence

Pre-Market Trading Levels for today

GLOBEX

NQ

★ **HIGH:** 25738.75

★ **LOW:** 25608.25

★ **Bull Case** defend the 25500 to seek the 25612, 25633, 25750, 25812, 25833, 25912, 26000, 26106, 26250, 26312, 26333

★ **Bear Case** seal the 25833 to seek the 25812, 25750, 25633, 25612, 25500, 25412, 25333, 25312, 25250, 25106

★ **Overnight Range - 85.50**

NQ (Prev. Day)

★ High 25794.75

★ Low 25628.00

★ Close 25700.25

NQ (Week Open) 25635.25

S&P 500

★ **HIGH** - 6936.75

★ **LOW** - 6915.25

★ **Bull Case:** defend the 6888 to seek the 6900, 6912, 6917, 6926, 6933, 6942, 6950, 6962, 6977, 6988

★ **Bear Case:** seal the 6942 to seek the 6933, 6926, 6917, 6912, 6900, 6888, 6877, 6862, 6850, 6833, 3833, 6826, 6817, 6812, 6800, 6788, 6777, 6762, 6750, 6733

★ **Overnight Range** - 21.50

ES (Prev Day)

★ High 6936.25

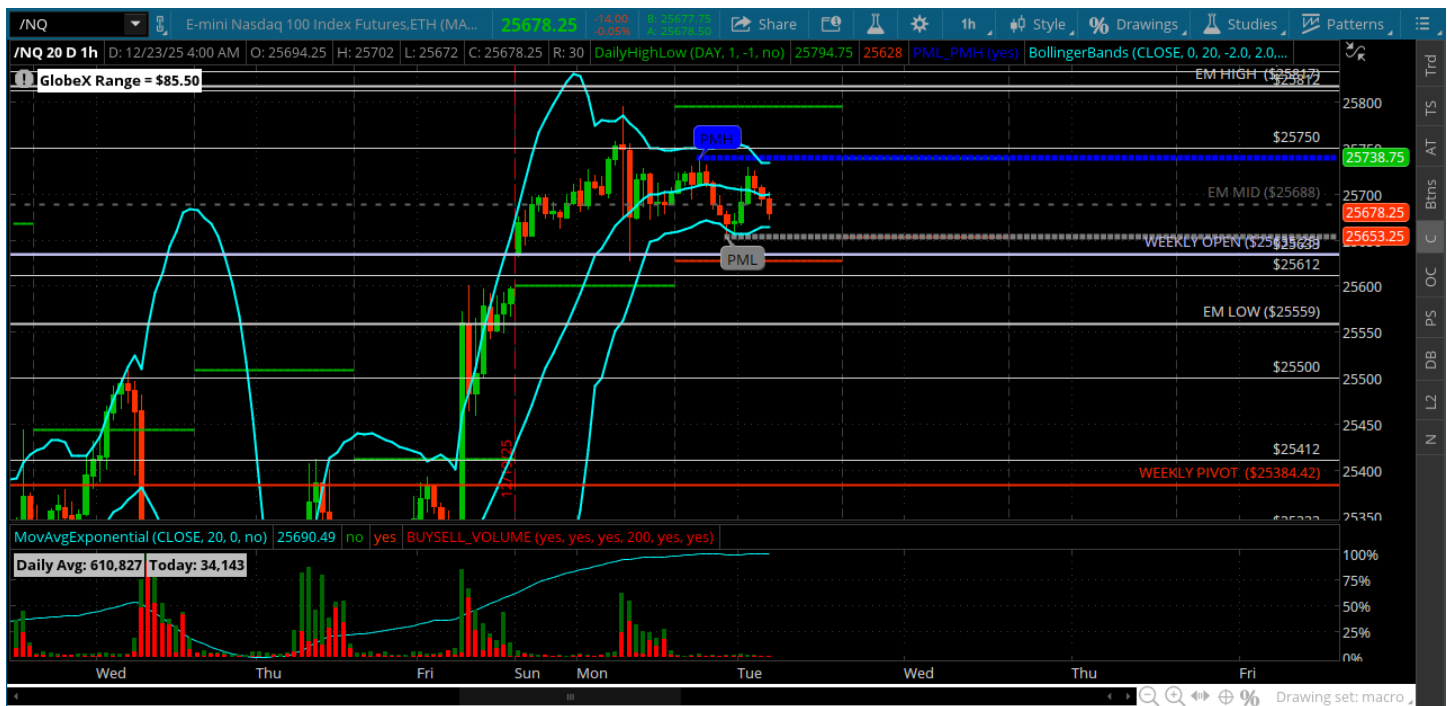
★ Low 6900.50

★ Close 6930.75

ES (Week Open) 6906.25

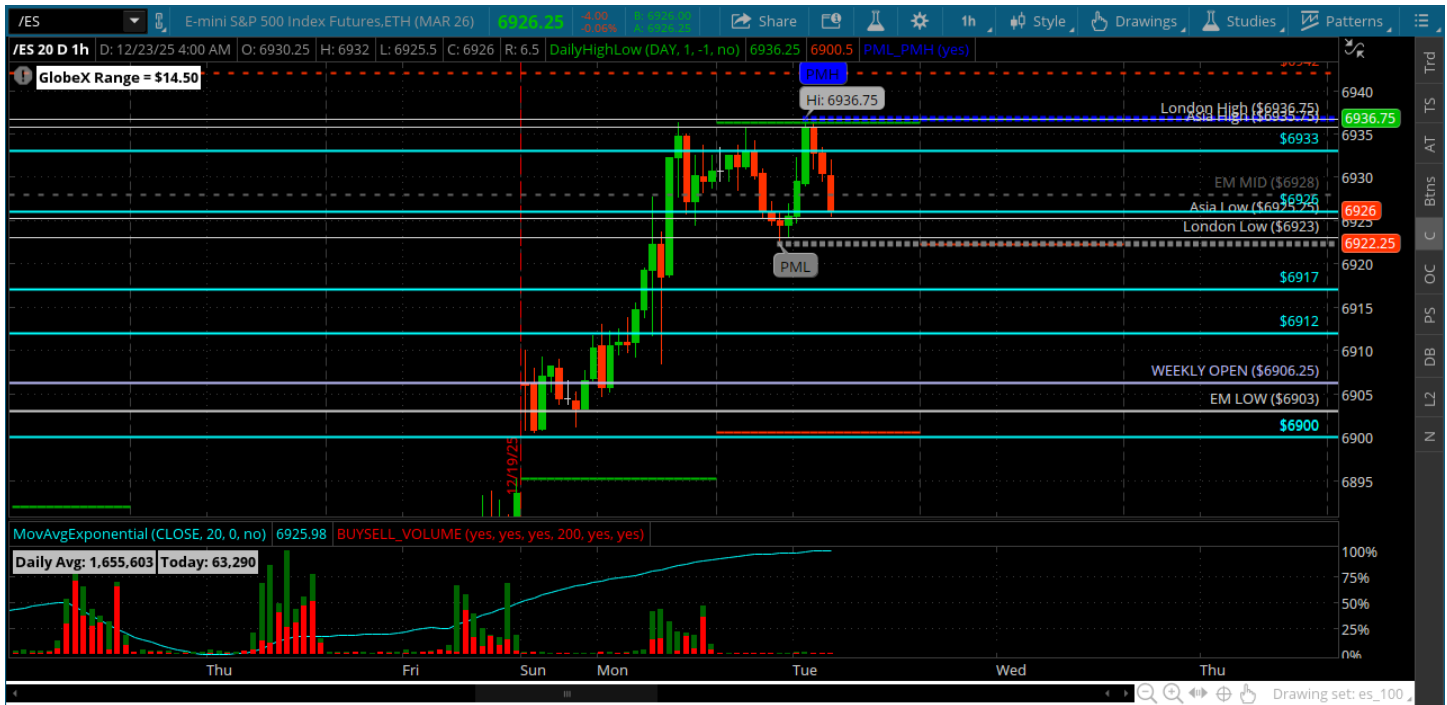
Pre-Market Charts to Watch

Tuesday, December 23, 2025 Pre-Market /NQ 1 Hour Chart



- Bulls held their gap and stayed within the 25750 to 25633 range
- Expecting more of the same today - slow holiday trade (slower in the afternoon)
- Bearish under the weekly open

Tuesday, December 23, 2025 Pre-Market /ES 1 Hour Chart



- Bulls held the 6912 yesterday and moved to the 33
- Expecting more rangebound holiday trade
- Bearish under the 6900
-

Disclaimer:

Disclaimer: Neither TheoTrade or any of its officers, directors, employees, other personnel, representatives, agents or independent contractors is, in such capacities, a licensed financial adviser, registered investment adviser, registered broker-dealer or FINRA|SIPC|NFA-member firm. TheoTrade does not provide investment or financial advice or make investment recommendations. TheoTrade is not in the business of transacting trades, nor does TheoTrade agree to direct your brokerage accounts or give trading advice tailored to your particular situation. Nothing contained in our content constitutes a solicitation, recommendation, promotion, or endorsement of any particular security, other investment product, transaction or investment. Trading Futures, Options on Futures, and retail off-exchange foreign currency transactions involves substantial risk of loss and is not suitable for all investors. You should carefully consider whether trading is suitable for you in light of your circumstances, knowledge, and financial resources. You may lose all or more of your initial investment. Opinions, market data, and recommendations are subject to change at any time. Past Performance is not necessarily indicative of future results.