



Tony Rago's Pre-Market Playbook

★ Overnight Range

- ES 16.00
- NQ 73.25
- VIX 14.20

- ★ **Bulls** need to hold above yest closes **6980 and 25864-- long above these**
- ★ Breakouts are above yesterday's highs **6988 and 25892 - aggressive longs** (await for confirmation with a new high and a retest of the highs from above that holds)
- ★ **Bears** need under overnight lows **short under 6974 and 25843**
- ★ Breakdown is below yest lows **6952 and 25777 -- aggressive shorts** (wait for confirmation with a new low and a retest of the lows from below that hold)
- ★ **RANGEBOUND: 2 Way trade long and shorts will work** to get the day done
- ★ Keep it simple and be patient for confirmation on either side or establish the range if we are going to be rangebound
- ★ Confirm rally continuation with sustained trade over the 30min IB High and likewise
- ★ bearish under the IB Low

ECON:

- n/a

Pre-Market Trading Levels for today

GLOBEX

NQ

★ **HIGH:** 25916.50

★ **LOW:** 25843.25

★ **Bull Case** defend the 25750 to seek the 25812, 25833, 25912, 26000, 26106, 26250, 26312, 26333, 26412, 26500

★ **Bear Case** seal the 26000 to seek the 25912, 25833, 25812, 25750, 25633, 25612, 25500, 25412, 25333, 25312, 25250, 25106

★ **Overnight Range - 73.25**

NQ (Prev. Day)

★ High 25892.00

★ Low 25777.50

★ Close 25864.75

NQ (Week Open) 25635.25

S&P 500

★ **HIGH** - 6990.00

★ **LOW** - 6974.00

★ **Bull Case:** defend the 6962 to seek the 6977, 6988, 7000, 7012, 7017, 7026, 7033, 7050, 7062, 7070, 7077

★ **Bear Case:** seal the 7000 to seek the 6988, 6977, 6962, 6950, 6933, 6926, 6917, 6912, 6900, 6888, 6877, 6862, 6850

★ **Overnight Range** - 16.00

ES (Prev Day)

★ High 6988.00

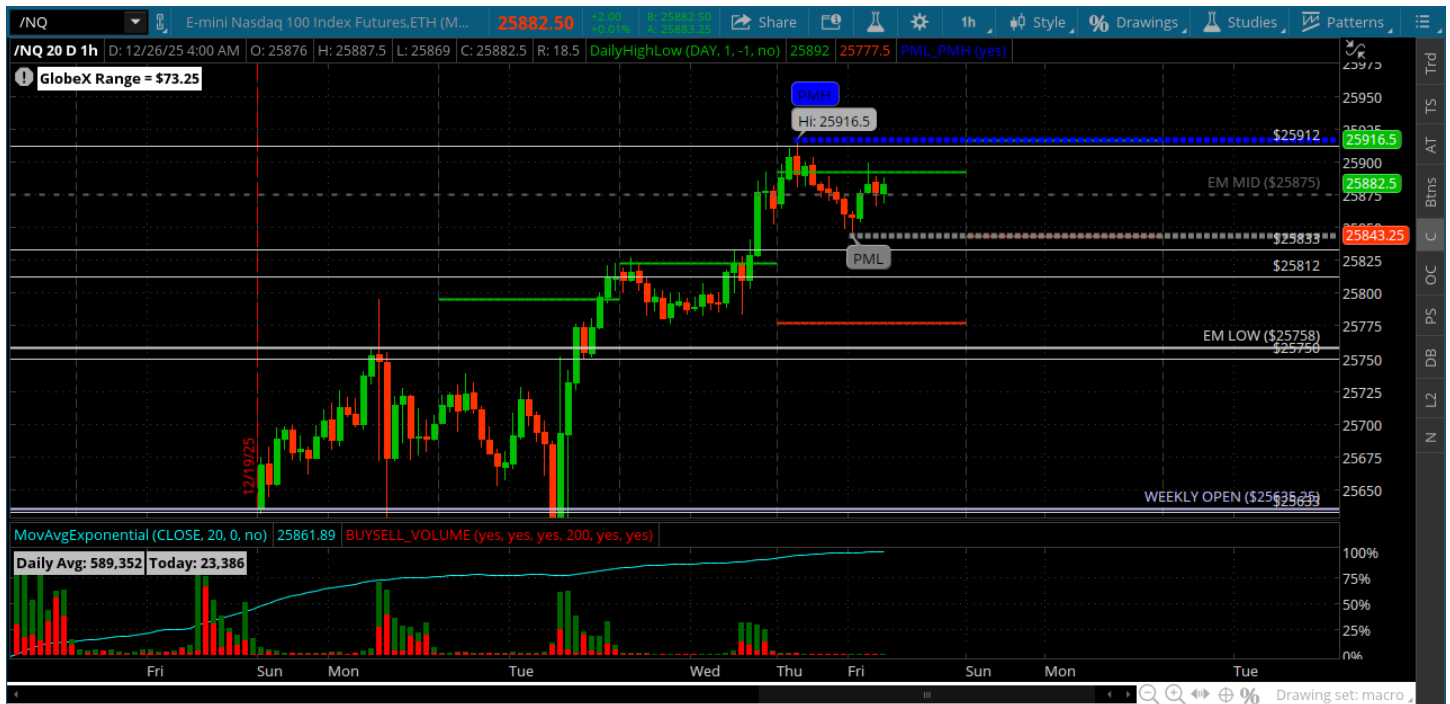
★ Low 6952.50

★ Close 6980.00

ES (Week Open) 6906.25

Pre-Market Charts to Watch

Friday, December 26, 2025 Pre-Market /NQ 1 Hour Chart



- 25912 gets a test and knockin on the door of 26000 roundy
- NQ is still 700 handles off of the all time high while ES is printing new highs
- Expecting a quiet session today with holiday etc..
- Bearish below 25750

Disclaimer:

Disclaimer: Neither TheoTrade or any of its officers, directors, employees, other personnel, representatives, agents or independent contractors is, in such capacities, a licensed financial adviser, registered investment adviser, registered broker-dealer or FINRA|SIPC|NFA-member firm. TheoTrade does not provide investment or financial advice or make investment recommendations. TheoTrade is not in the business of transacting trades, nor does TheoTrade agree to direct your brokerage accounts or give trading advice tailored to your particular situation. Nothing contained in our content constitutes a solicitation, recommendation, promotion, or endorsement of any particular security, other investment product, transaction or investment. Trading Futures, Options on Futures, and retail off-exchange foreign currency transactions involves substantial risk of loss and is not suitable for all investors. You should carefully consider whether trading is suitable for you in light of your circumstances, knowledge, and financial resources. You may lose all or more of your initial investment. Opinions, market data, and recommendations are subject to change at any time. Past Performance is not necessarily indicative of future results.