



## *Tony Rago's Pre-Market Playbook*

---

### ★ Overnight Range

- ES 26.00
- NQ 137.00
- VIX 14.71

- ★ **Bulls** need to hold above yest closes **6945 and 25676-- long above these**
- ★ Breakouts are above yesterday's highs **6961 and 25793 - aggressive longs** (await for confirmation with a new high and a retest of the highs from above that holds)
- ★ **Bears** need under overnight lows **short under 6922 and 25552**
- ★ Breakdown is below yest lows **6940 and 25668 -- aggressive shorts** (wait for confirmation with a new low and a retest of the lows from below that hold)
- ★ **RANGEBOUND: 2 Way trade long and shorts will work** to get the day done
- ★ Keep it simple and be patient for confirmation on either side or establish the range if we are going to be rangebound
- ★ Confirm rally continuation with sustained trade over the 30min IB High and likewise
- ★ bearish under the IB Low

### ECON:

- 8:30 am Initial jobless claims

## *Pre-Market Trading Levels for today*

---

### **GLOBEX**

#### **NQ**

★ **HIGH:** 25689.50

★ **LOW:** 25552.50

★ **Bull Case** defend the 25612 to seek the 25633, 25750, 25812, 25833, 25912, 26000, 26106, 26250, 26312, 26333, 26412, 26500

★ **Bear Case** seal the 26000 to seek the 25912, 25833, 25812, 25750, 25633, 25612, 25500, 25412, 25333, 25312, 25250, 25106

★ **Overnight Range - 137.00**

#### **NQ (Prev. Day)**

★ High 25793.75

★ Low 25668.25

★ Close 25676.00

**NQ (Week Open) 25863.25**

## S&P 500

★ **HIGH** - 6948.25

★ **LOW** - 6922.25

★ **Bull Case:** defend the 6917 to seek the 6926, 6933, 6942, 6950, 6962, 6977, 6988, 7000, 7012, 7017, 7026, 7033, 7050, 7062, 7070, 7077

★ **Bear Case:** seal the 6977 to seek the 6962, 6950, 6933, 6926, 6917, 6912, 6900, 6888, 6877, 6862, 6850

★ **Overnight Range** - 26.00

### ES (Prev Day)

★ High 6961.50

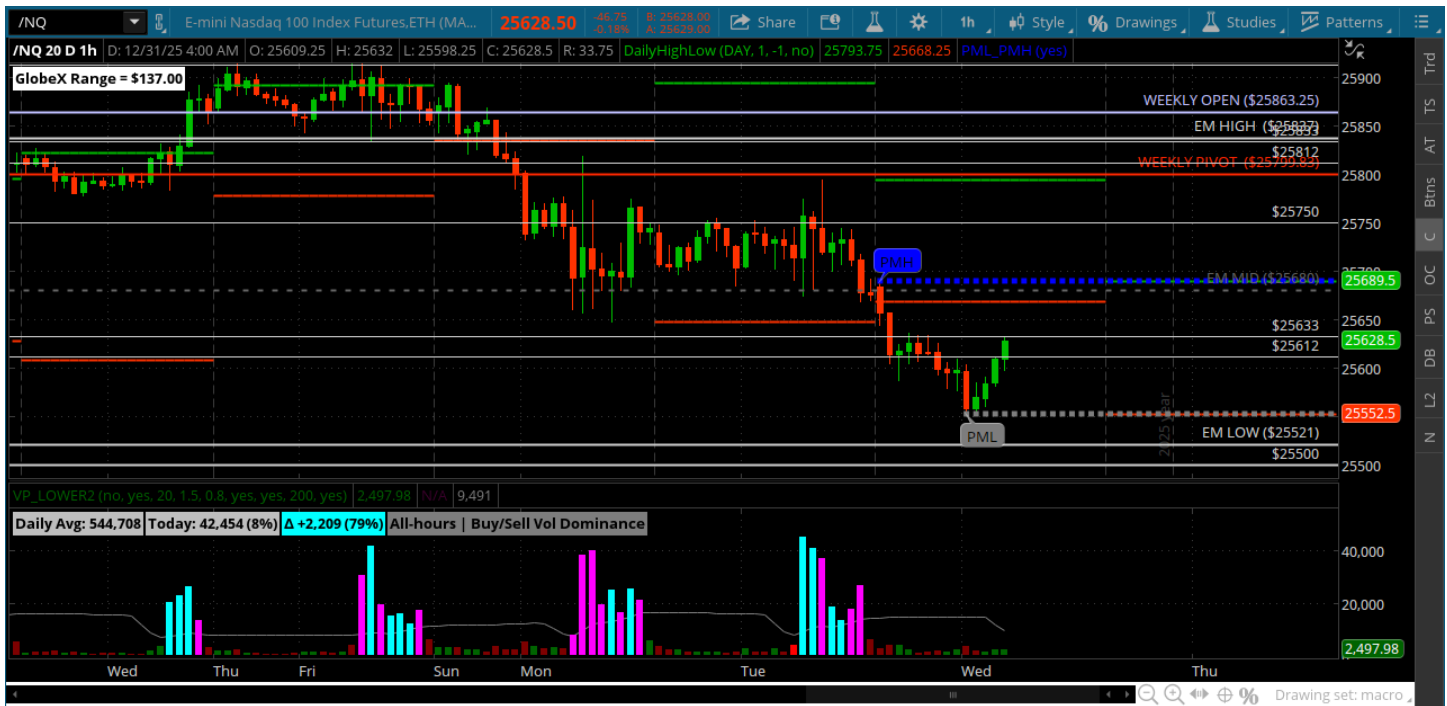
★ Low 6940.75

★ Close 6945.50

**ES (Week Open) 6906.25**

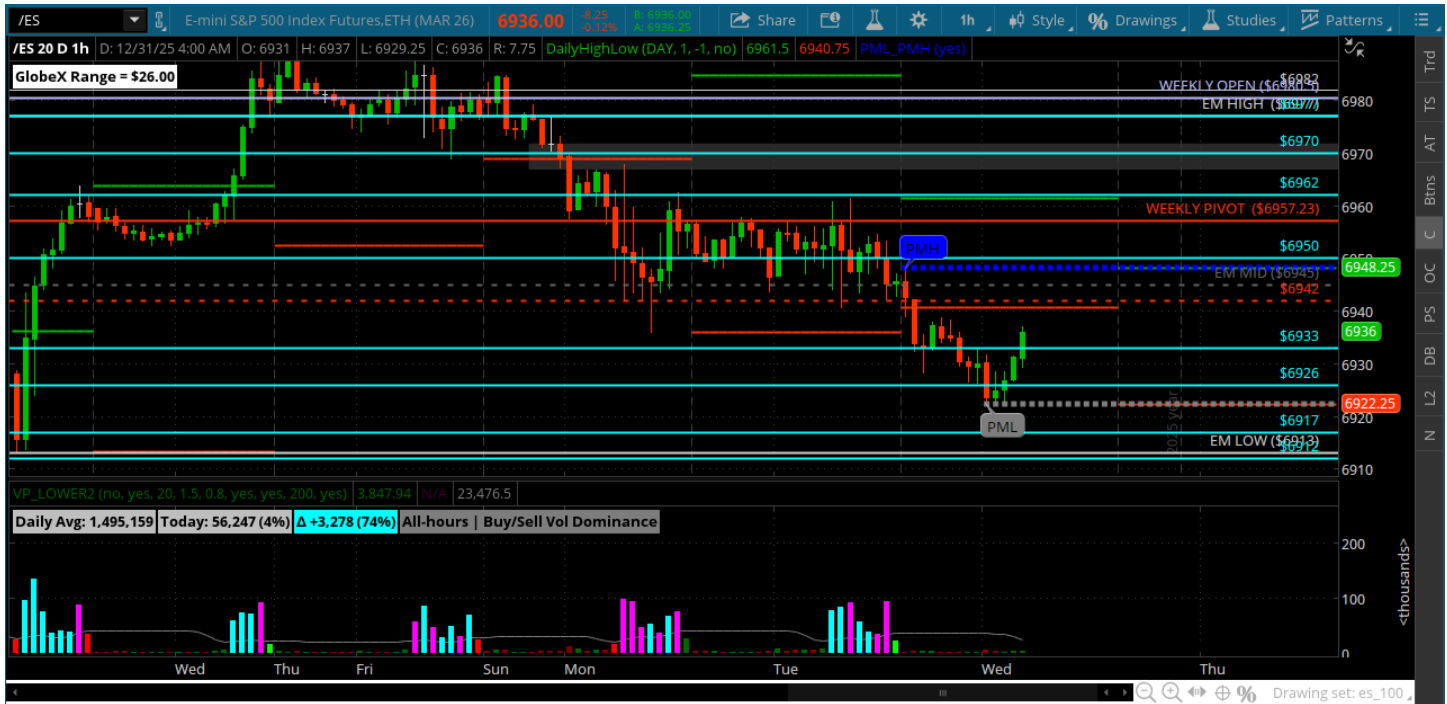
# Pre-Market Charts to Watch

Wednesday, December 31, 2025 Pre-Market /NQ 1 Hour Chart



- Holiday Trade continues -- slow rollin
- Bulls need above the 25750
- Bearish under the 25612 -- 25500 is open for a test if the bears can hold the 25677 area

## Wednesday, December 31, 2025 Pre-Market /ES 1 Hour Chart



- Holiday trade continues
- Price came down to the 6926/22 -- will be about defending the 6933 to get back to the 6950/6962
- Bears under 6912 can test the 6900

*Disclaimer:*

Disclaimer: Neither TheoTrade or any of its officers, directors, employees, other personnel, representatives, agents or independent contractors is, in such capacities, a licensed financial adviser, registered investment adviser, registered broker-dealer or FINRA|SIPC|NFA-member firm. TheoTrade does not provide investment or financial advice or make investment recommendations. TheoTrade is not in the business of transacting trades, nor does TheoTrade agree to direct your brokerage accounts or give trading advice tailored to your particular situation. Nothing contained in our content constitutes a solicitation, recommendation, promotion, or endorsement of any particular security, other investment product, transaction or investment. Trading Futures, Options on Futures, and retail off-exchange foreign currency transactions involves substantial risk of loss and is not suitable for all investors. You should carefully consider whether trading is suitable for you in light of your circumstances, knowledge, and financial resources. You may lose all or more of your initial investment. Opinions, market data, and recommendations are subject to change at any time. Past Performance is not necessarily indicative of future results.