



Tony Rago's Pre-Market Playbook

★ Overnight Range

- ES 17.00
- NQ 89.25
- VIX 16.13

- ★ **Bulls** need to hold above yest closes **6864** and **25645**-- long above these
- ★ Breakouts are above yesterday's highs **6873** and **25685** - **aggressive longs** (await for confirmation with a new high and a retest of the highs from above that holds)
- ★ **Bears** need under overnight lows **short under 6854** and **25603**
- ★ Breakdown is below yest lows **6817** and **25421** -- **aggressive shorts** (wait for confirmation with a new low and a retest of the lows from below that hold)
- ★ **RANGEBOUND: 2 Way trade long and shorts will work** to get the day done
- ★ Keep it simple and be patient for confirmation on either side or establish the range if we are going to be rangebound
- ★ Confirm rally continuation with sustained trade over the 30min IB High and likewise
- ★ bearish under the IB Low

ECON:

- 8:30 am Initial jobless claims
- 12:00 pm Fed Vice Chair for Supervision Michelle Bowman speaks

Pre-Market Trading Levels for today

GLOBEX

NQ

★ **HIGH:** 25692.50

★ **LOW:** 25603.25

★ **Bull Case** defend the 25412 to seek the 25500, 25612, 25633, 25750, 25812, 25833, 25912, 26000, 26106, 26250, 26312, 26333

★ **Bear Case** seal the 25750 to seek the 25633, 25612, 25500, 25412, 25333, 25312, 25250, 25106, 25000, 24912, 24833, 24812, 24750, 24633, 24500, 24412, 24333

★ **Overnight Range - 89.25**

NQ (Prev. Day)

★ High 25685.25

★ Low 25421.50

★ Close 25645.75

NQ (Week Open) 25482.50

S&P 500

★ **HIGH** - 6871.25

★ **LOW** - 6854.25

★ **Bull Case:** defend the 6833 to seek the 6850, 6862, 6877, 6888, 6900, 6912, 6917, 6926, 6933

★ **Bear Case:** seal the 6888 to seek the 6877, 6862, 6850, 6833, 3833, 6826, 6817, 6812, 6800, 6788, 6777, 6762, 6750, 6742, 6733, 6726, 6717, 6712, 6700

★ **Overnight Range** - 17.00

ES (Prev Day)

★ High 6873.25

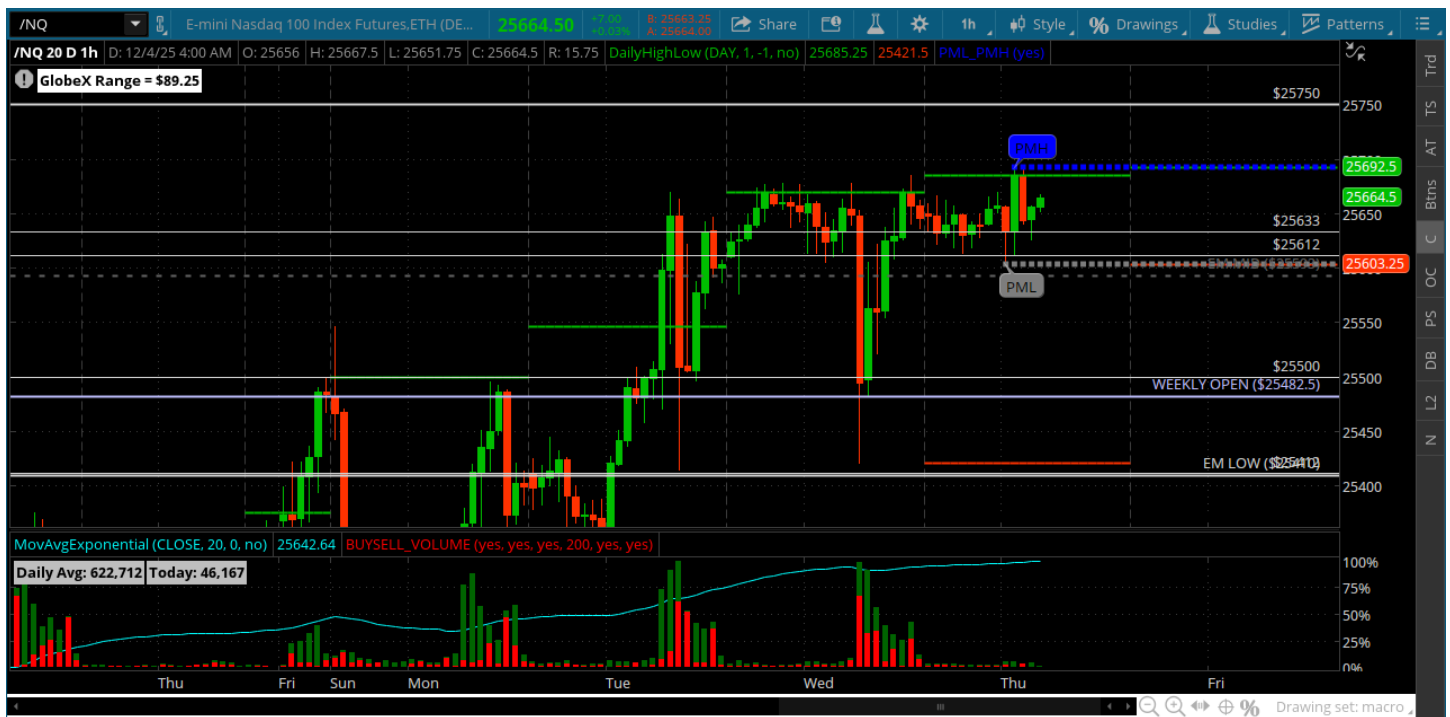
★ Low 6817.50

★ Close 6864.75

ES (Week Open) 6854.75

Pre-Market Charts to Watch

Thursday, December 4, 2025 Pre-Market /NQ 1 Hour Chart



- Very quiet overnight session with 25750 still open for a test
- Under the 25612 can retest the 25500
- Market is still consolidating last weeks move still looking for expansion

Disclaimer:

Disclaimer: Neither TheoTrade or any of its officers, directors, employees, other personnel, representatives, agents or independent contractors is, in such capacities, a licensed financial adviser, registered investment adviser, registered broker-dealer or FINRA|SIPC|NFA-member firm. TheoTrade does not provide investment or financial advice or make investment recommendations. TheoTrade is not in the business of transacting trades, nor does TheoTrade agree to direct your brokerage accounts or give trading advice tailored to your particular situation. Nothing contained in our content constitutes a solicitation, recommendation, promotion, or endorsement of any particular security, other investment product, transaction or investment. Trading Futures, Options on Futures, and retail off-exchange foreign currency transactions involves substantial risk of loss and is not suitable for all investors. You should carefully consider whether trading is suitable for you in light of your circumstances, knowledge, and financial resources. You may lose all or more of your initial investment. Opinions, market data, and recommendations are subject to change at any time. Past Performance is not necessarily indicative of future results.