



Tony Rago's Pre-Market Playbook

★ Overnight Range

- ES 23.75
- NQ 128.50
- VIX 17.01

- ★ **Bulls** need to hold above yest closes **6864 and 25706**-- long above these
- ★ Breakouts are above yesterday's highs **6893 and 25860** - **aggressive longs** (await for confirmation with a new high and a retest of the highs from above that holds)
- ★ **Bears** need under overnight lows **short under 6844 and 25600**
- ★ Breakdown is below yest lows **6835 and 25564** -- **aggressive shorts** (wait for confirmation with a new low and a retest of the lows from below that hold)
- ★ **RANGEBOUND: 2 Way trade long and shorts will work** to get the day done
- ★ Keep it simple and be patient for confirmation on either side or establish the range if we are going to be rangebound
- ★ Confirm rally continuation with sustained trade over the 30min IB High and likewise
- ★ bearish under the IB Low

ECON:

- 10:00 am Job openings (delayed report)

Pre-Market Trading Levels for today

GLOBEX

NQ

★ **HIGH:** 25729.50

★ **LOW:** 25601.00

★ **Bull Case** defend the 25500 to seek the 25612, 25633, 25750, 25812, 25833, 25912, 26000, 26106, 26250, 26312, 26333

★ **Bear Case** seal the 25833 to seek the 25812, 25750, 25633, 25612, 25500, 25412, 25333, 25312, 25250, 25106, 25000, 24912, 24833, 24812, 24750, 24633, 24500, 24412, 24333

★ **Overnight Range - 128.50**

NQ (Prev. Day)

★ High 25860.75

★ Low 25564.75

★ Close 25706.75

NQ (Week Open) 25750.00

S&P 500

★ **HIGH** - 6868.50

★ **LOW** - 6844.75

★ **Bull Case:** defend the 6842 to seek the 6850, 6862, 6877, 6888, 6900, 6912, 6917, 6926, 6933

★ **Bear Case:** seal the 6912 to seek the 6900, 6888, 6877, 6862, 6850, 6833, 3833, 6826, 6817, 6812, 6800, 6788, 6777, 6762, 6750, 6742, 6733, 6726, 6717, 6712, 6700

★ **Overnight Range** - 23.75

ES (Prev Day)

★ High 6893.75

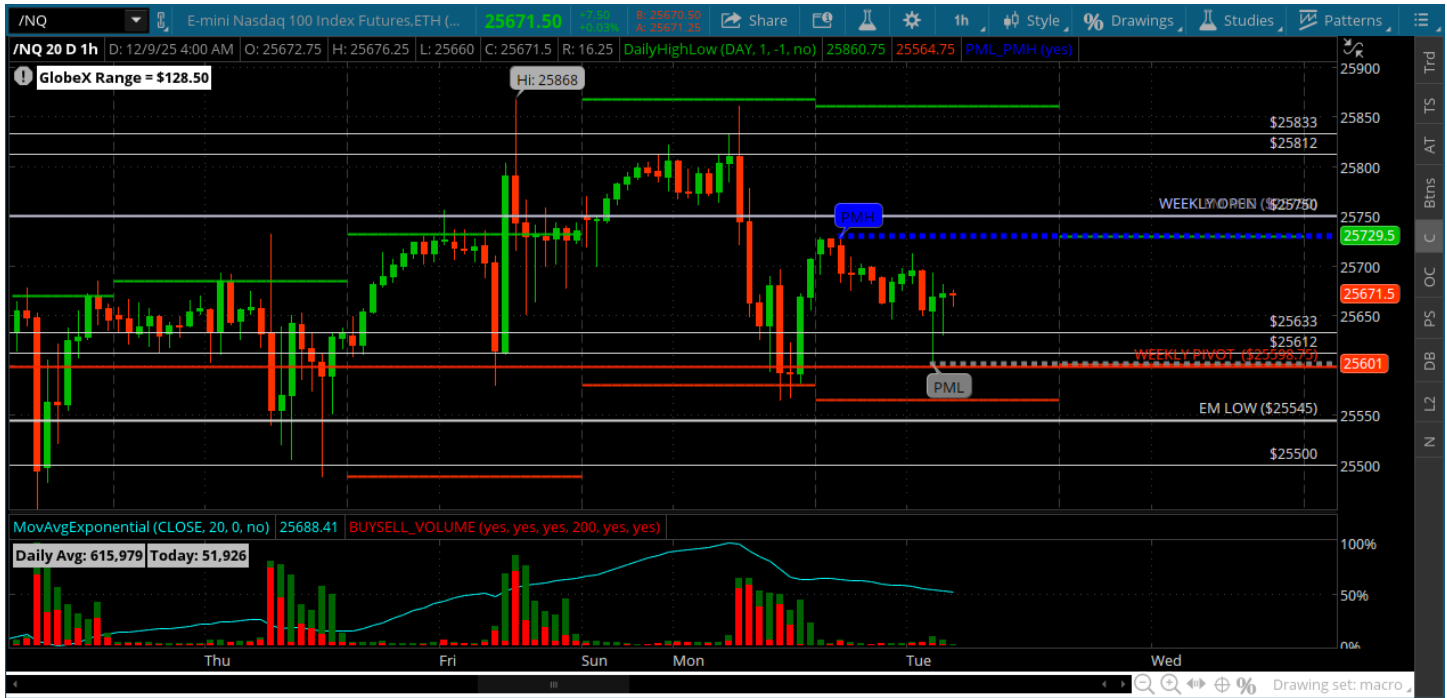
★ Low 6835.25

★ Close 6864.50

ES (Week Open) 6883.00

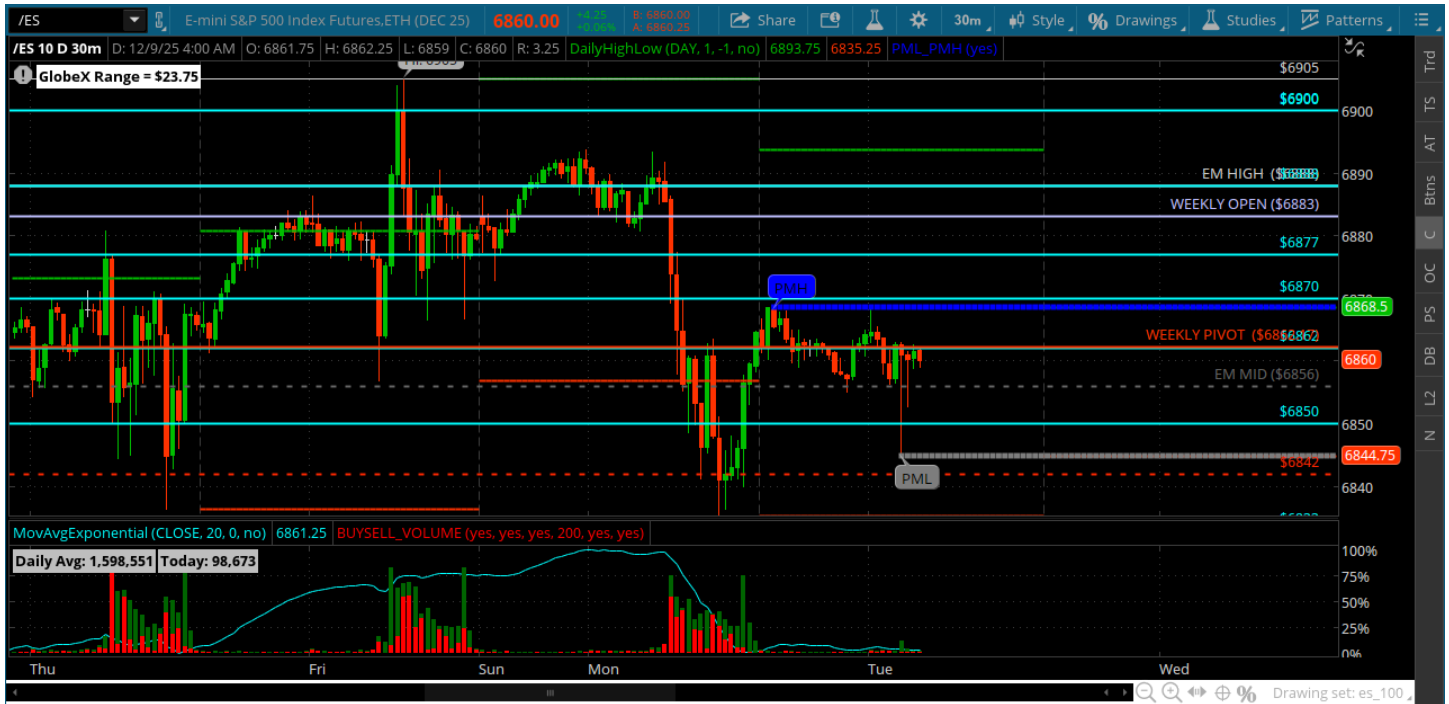
Pre-Market Charts to Watch

Tuesday, December 9, 2025 Pre-Market /NQ 1 Hour Chart



- Pullback played out to the weekly pivot and bulls close above it.
- Now they need to reclaim the weekly open and retest the 25833 above
- This could be our range heading into the FOMC - 25612-25750

Tuesday, December 9, 2025 Pre-Market /ES 1 Hour Chart



- Weekly open quickly went resistance at the open and we found a low at 6836 and 6842
- Price is sitting on weekly pivot as we head into the open
- Could be a range day between 6833-6877 today unless bulls can get back above the weekly open and hold it
- Expecting range boud trading into the FOMC tomorrow

Disclaimer:

Disclaimer: Neither TheoTrade or any of its officers, directors, employees, other personnel, representatives, agents or independent contractors is, in such capacities, a licensed financial adviser, registered investment adviser, registered broker-dealer or FINRA|SIPC|NFA-member firm. TheoTrade does not provide investment or financial advice or make investment recommendations. TheoTrade is not in the business of transacting trades, nor does TheoTrade agree to direct your brokerage accounts or give trading advice tailored to your particular situation. Nothing contained in our content constitutes a solicitation, recommendation, promotion, or endorsement of any particular security, other investment product, transaction or investment. Trading Futures, Options on Futures, and retail off-exchange foreign currency transactions involves substantial risk of loss and is not suitable for all investors. You should carefully consider whether trading is suitable for you in light of your circumstances, knowledge, and financial resources. You may lose all or more of your initial investment. Opinions, market data, and recommendations are subject to change at any time. Past Performance is not necessarily indicative of future results.