



Tony Rago's Pre-Market Playbook

★ Overnight Range

- ES 34.25
- NQ 179.25
- VIX 15.76

- ★ **Bulls** need to hold above yest closes **6967 and 25835-- long above these**
- ★ Breakouts are above yesterday's highs **7006 and 25996 - aggressive longs** (await for confirmation with a new high and a retest of the highs from above that holds)
- ★ **Bears** need under overnight lows **short under 6935 and 25671**
- ★ Breakdown is below yest lows **6958 and 25727 -- aggressive shorts** (wait for confirmation with a new low and a retest of the lows from below that hold)
- ★ **RANGEBOUND: 2 Way trade long and shorts will work** to get the day done
- ★ Keep it simple and be patient for confirmation on either side or establish the range if we are going to be rangebound
- ★ Confirm rally continuation with sustained trade over the 30min IB High and likewise bearish under the IB Low
- ★

ECON:

- 8:30 am Initial jobless claims
- 8:30 am U.S. trade deficit
- 8:30 am U.S. productivity
- 3:00 pm U.S. consumer credit

Pre-Market Trading Levels for today

GLOBEX

NQ

★ **HIGH:** 25850.25

★ **LOW:** 25671.00

★ **Bull Case** defend the 25612 to seek the 25633, 25750, 25812, 25833, 25912, 26000, 26106, 26250, 26312, 26333, 26412, 26500

★ **Bear Case** seal the 25833 to seek the 25812, 25750, 25633, 25612, 25500, 25412, 25333, 25312, 25250, 25106

★ **Overnight Range - 179.25**

NQ (Prev. Day)

★ High 25996.25

★ Low 25727.00

★ Close 25835.75

NQ (Week Open) 25431.75

S&P 500

★ **HIGH** - 6969.50

★ **LOW** - 6935.25

★ **Bull Case:** defend the 6962 to seek the 6977, 6988, 7000, 7012, 7017, 7026, 7033, 7050, 7062, 7070, 7077

★ **Bear Case:** seal the 7000 to seek the 6988, 6977, 6962, 6950, 6933, 6926, 6917, 6912, 6900, 6888, 6877, 6862, 6850

★ **Overnight Range** - 34.25

ES (Prev Day)

★ High 7006.75

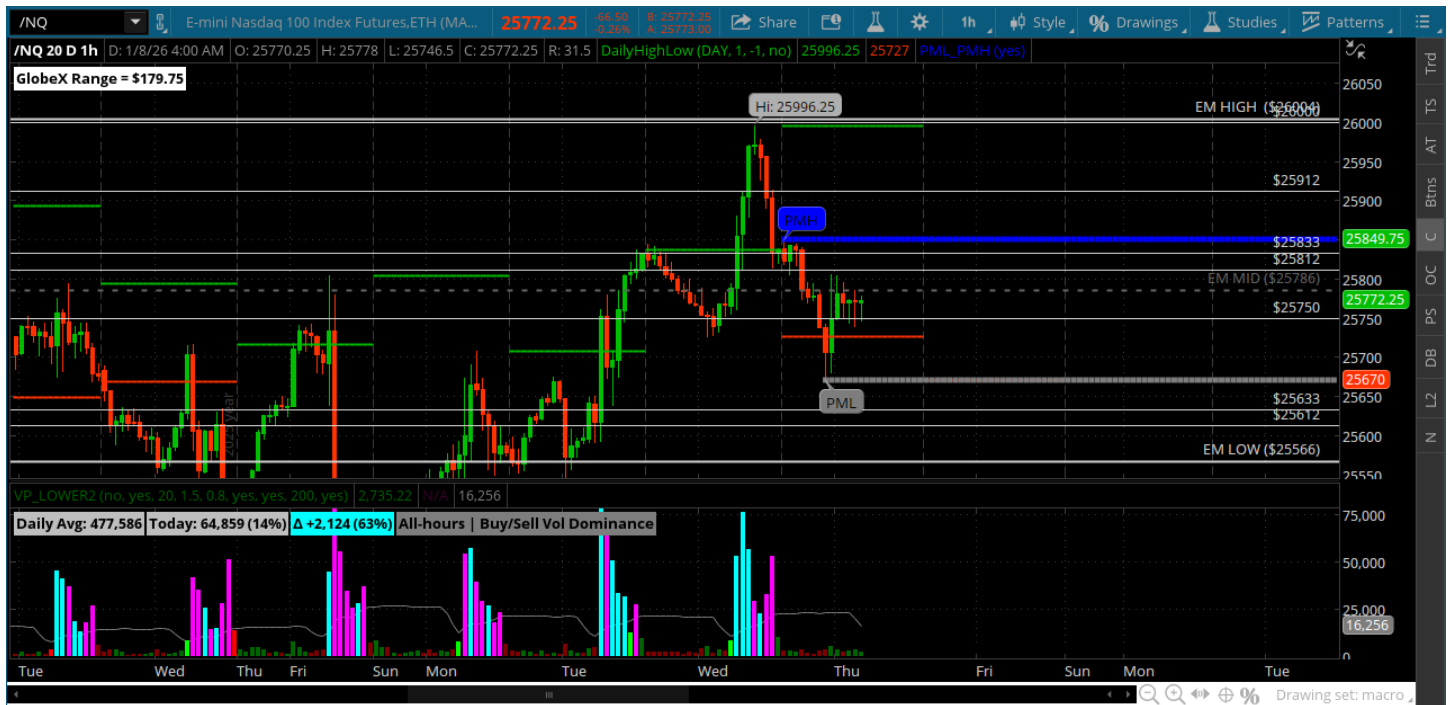
★ Low 6958.00

★ Close 6967.00

ES (Week Open) 6911.25

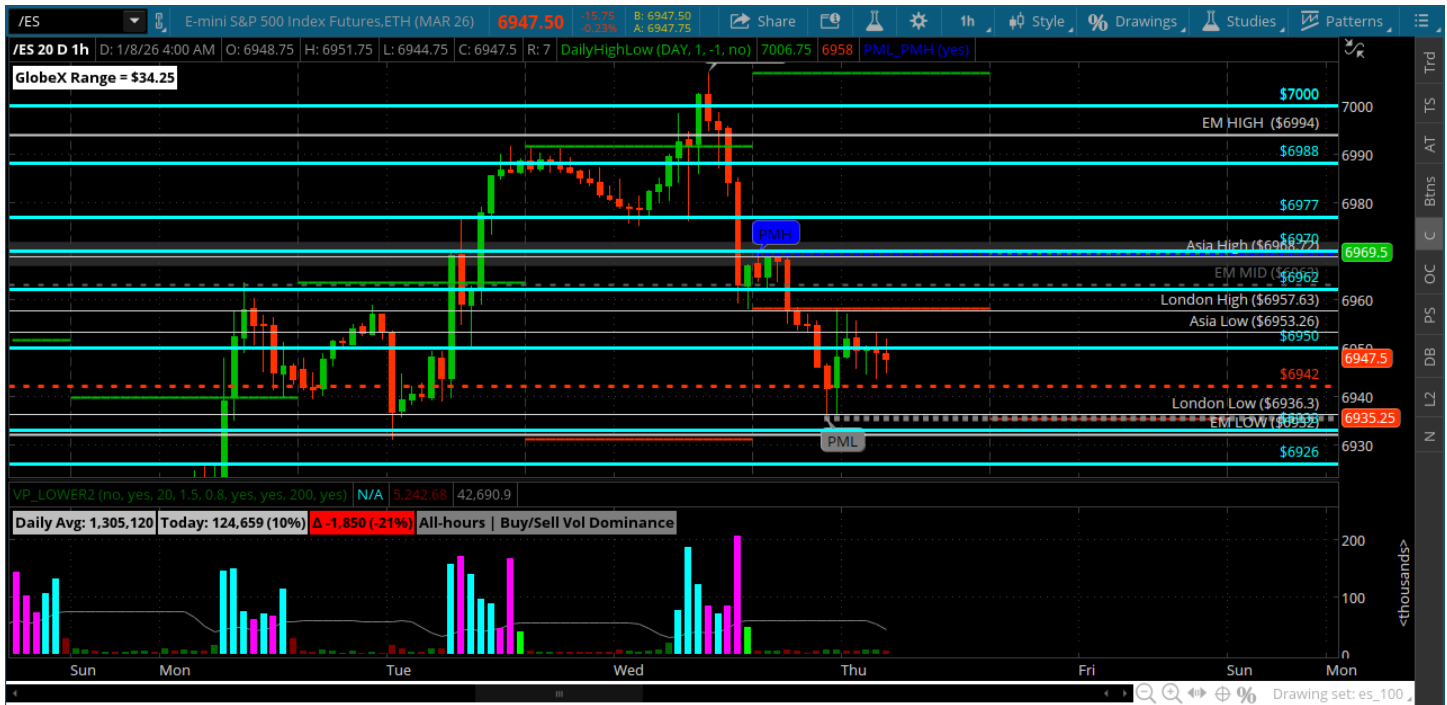
Pre-Market Charts to Watch

Thursday, January 8, 2025 Pre-Market /NQ 1 Hour Chart



- Almost tagged the 26k and backed off with ES
- Closes under the 25750 opens the 25633 for a test if the 25812 can hold as resis
- Bears have an advantage coming into the open - lets see if they can do anything with it
- Bulls need back above the 25833 and 25912

Thursday, January 8, 2025 Pre-Market /ES 1 Hour Chart



- ES prints the 7k and a new high and backed off all the way back to the 6942
- Can bears build on this? We will see
- Bulls want to hold the 6933 and move back to the 6977
- Bears need to seal off the 6977 on a test from below

Disclaimer:

Disclaimer: Neither TheoTrade or any of its officers, directors, employees, other personnel, representatives, agents or independent contractors is, in such capacities, a licensed financial adviser, registered investment adviser, registered broker-dealer or FINRA|SIPC|NFA-member firm. TheoTrade does not provide investment or financial advice or make investment recommendations. TheoTrade is not in the business of transacting trades, nor does TheoTrade agree to direct your brokerage accounts or give trading advice tailored to your particular situation. Nothing contained in our content constitutes a solicitation, recommendation, promotion, or endorsement of any particular security, other investment product, transaction or investment. Trading Futures, Options on Futures, and retail off-exchange foreign currency transactions involves substantial risk of loss and is not suitable for all investors. You should carefully consider whether trading is suitable for you in light of your circumstances, knowledge, and financial resources. You may lose all or more of your initial investment. Opinions, market data, and recommendations are subject to change at any time. Past Performance is not necessarily indicative of future results.