



Tony Rago's Pre-Market Playbook

★ Overnight Range

- ES 39.00
- NQ 224.50
- VIX 17011

★ **Bulls** need to hold above yest closes **6999 and 25898-- long above these**

★ Breakouts are above yesterday's highs **7036 and 26045 - aggressive longs** (await for confirmation with a new high and a retest of the highs from above that holds)

★ **Bears** need under overnight lows **short under 6963 and 25701**

★ Breakdown is below yest lows **6976 and 25803 -- aggressive shorts** (wait for

★ confirmation with a new low and a retest of the lows from below that hold)

★ **RANGEBOUND: 2 Way trade long and shorts will work** to get the day done

★ Keep it simple and be patient for confirmation on either side or establish the range if

★ we are going to be rangebound

★ Confirm rally continuation with sustained trade over the 30min IB High and likewise

★ bearish under the IB Low

ECON:

- 8:30 am U.S. retail sales (delayed report)
- 8:30 am Core PPI year over year Nov.
- 10:00 am U.S. Business inventories
- 10:00 am Existing home sales
- 12:00 pm Atlanta Fed President Raphael Bostic speaks
- 12:30 pm Fed Governor Stephen Miran speaks
- 11:00 am Minneapolis Fed President Neel Kashkari speaks
- 2:00 pm Federal Reserve's Beige Book
- 2:10 pm New York Fed President John Williams opening remarks

Pre-Market Trading Levels for today

GLOBEX

NQ

★ **HIGH:** 25925.75

★ **LOW:** 25701.25

★ **Bull Case** defend the 25612 to seek the 256333, 25750, 25812, 25833, 25912, 26000, 26106, 26250, 26312, 26333, 26412, 26500

★ **Bear Case** seal the 26000 to seek the 25912, 25833, 25812, 25750, 25633, 25612, 25500, 25412, 25333, 25312, 25250, 25106

★ **Overnight Range - 224.50**

NQ (Prev. Day)

★ High 26045.50

★ Low 25803.25

★ Close 25898.25

NQ (Week Open) 25949.00

S&P 500

★ **HIGH** - 7002.50

★ **LOW** - 6963.50

★ **Bull Case:** defend the 6962 to seek the 6977, 6988, 7000, 7012, 7017, 7026, 7033, 7050, 7062, 7070, 7077

★ **Bear Case:** seal the 7012 to seek the 7000, 7026, 7017, 7000, 6988, 6977, 6962, 6950, 6933, 6926, 6917, 6912, 6900, 6888, 6877, 6862, 6850

★ **Overnight Range** - 39.00

ES (Prev Day)

★ High 7036.25

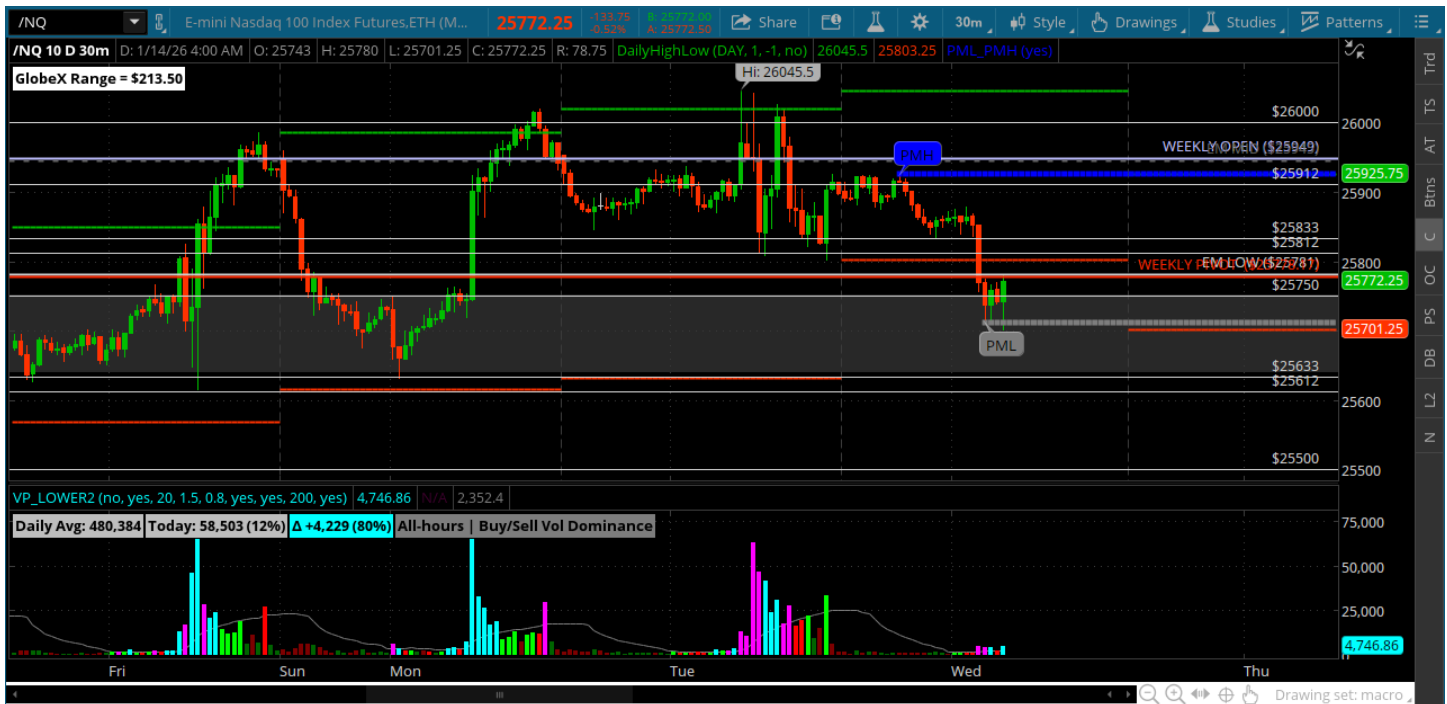
★ Low 6976.75

★ Close 6999.25

ES (Week Open) 7007.00

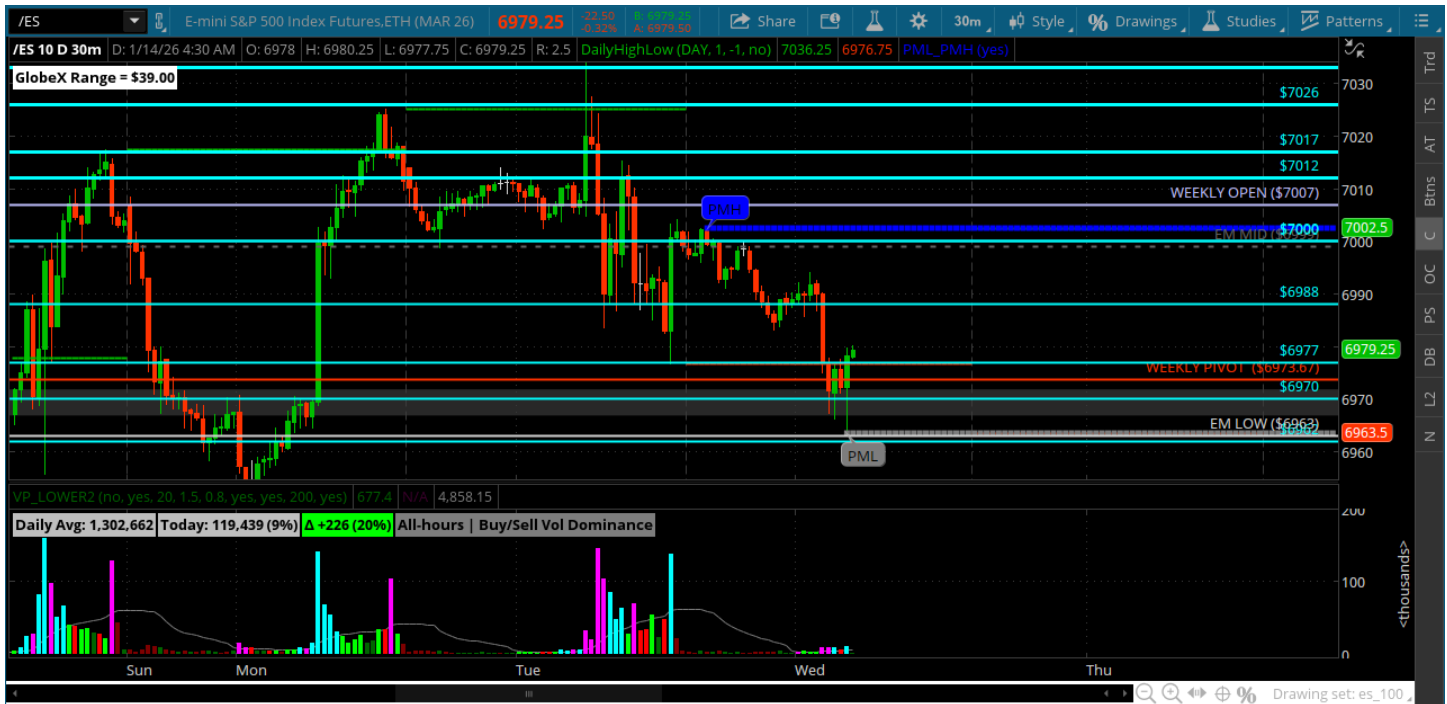
Pre-Market Charts to Watch

Wednesday, January 14, 2025 Pre-Market /NQ 1 Hour Chart



- Bulls still cannot hold price above 26000
- Now back to weekly pivot and a lower low under it
- This puts bears in a position to pull this back a bit deeper
- The bull/bear line is the weekly pivot today - bullish above and bearish below

Wednesday, January 14, 2025 Pre-Market /ES 1 Hour Chart



- More new highs at the 7036 and price backed off all they way down to the 6977 at the close
- Like NQ we are back to the weekly pivot and that will be the deal for today
- Bulls need to hold and move back to the 7000 and bears want to get and stay under it and target the 6950, 6933, 6926

Disclaimer:

Disclaimer: Neither TheoTrade or any of its officers, directors, employees, other personnel, representatives, agents or independent contractors is, in such capacities, a licensed financial adviser, registered investment adviser, registered broker-dealer or FINRA|SIPC|NFA-member firm. TheoTrade does not provide investment or financial advice or make investment recommendations. TheoTrade is not in the business of transacting trades, nor does TheoTrade agree to direct your brokerage accounts or give trading advice tailored to your particular situation. Nothing contained in our content constitutes a solicitation, recommendation, promotion, or endorsement of any particular security, other investment product, transaction or investment. Trading Futures, Options on Futures, and retail off-exchange foreign currency transactions involves substantial risk of loss and is not suitable for all investors. You should carefully consider whether trading is suitable for you in light of your circumstances, knowledge, and financial resources. You may lose all or more of your initial investment. Opinions, market data, and recommendations are subject to change at any time. Past Performance is not necessarily indicative of future results.