



Tony Rago's Pre-Market Playbook

★ Overnight Range

- ES 39.00
- NQ 224.50
- VIX 17011

★ **Bulls** need to hold above yest closes **6960 and 25612-- long above these**

★ Breakouts are above yesterday's highs **7002 and 2925 - aggressive longs** (await for confirmation with a new high and a retest of the highs from above that holds)

★ **Bears** need under overnight lows **short under 6949 and 25562**

★ Breakdown is below yest lows **6923 and 25420 -- aggressive shorts** (wait for

★ confirmation with a new low and a retest of the lows from below that hold)

★ **RANGEBOUND: 2 Way trade long and shorts will work** to get the day done

★ Keep it simple and be patient for confirmation on either side or establish the range if

★ we are going to be rangebound

★ Confirm rally continuation with sustained trade over the 30min IB High and likewise

★ bearish under the IB Low

ECON:

- 8:30 am Initial jobless claims
- 8:30 am U.S. import prices
- 8:30 am Empire state manufacturing survey
- 8:30 am Philadelphia Fed's manufacturing survey
- 8:35 am Atlanta Fed President Raphael Bostic speaks
- 9:15 am Fed Governor Michael Barr speaks
- 12:40 pm Richmond Fed President Tom Barkin speaks
- 1:30 pm Kansas City Fed President Jeff Schmid speaks

Pre-Market Trading Levels for today

GLOBEX

NQ

★ **HIGH:** 25888.00

★ **LOW:** 25562.50

★ **Bull Case** defend the 25633 to seek the 25750, 25812, 25833, 25912, 26000, 26106, 26250, 26312, 26333, 26412, 26500

★ **Bear Case** seal the 26000 to seek the 25912, 25833, 25812, 25750, 25633, 25612, 25500, 25412, 25333, 25312, 25250, 25106

★ **Overnight Range - 325.50**

NQ (Prev. Day)

★ High 25925.75

★ Low 25420.75

★ Close 25612.00

NQ (Week Open) 25949.00

S&P 500

★ **HIGH** - 7000.75

★ **LOW** - 6949.50

★ **Bull Case:** defend the 6970 to seek the 6977, 6988, 7000, 7012, 7017, 7026, 7033, 7050, 7062, 7070, 7077

★ **Bear Case:** seal the 7012 to seek the 7000, 7026, 7017, 7000, 6988, 6977, 6962, 6950, 6933, 6926, 6917, 6912, 6900, 6888, 6877, 6862, 6850

★ **Overnight Range** - 51.25

ES (Prev Day)

★ High 7002.50

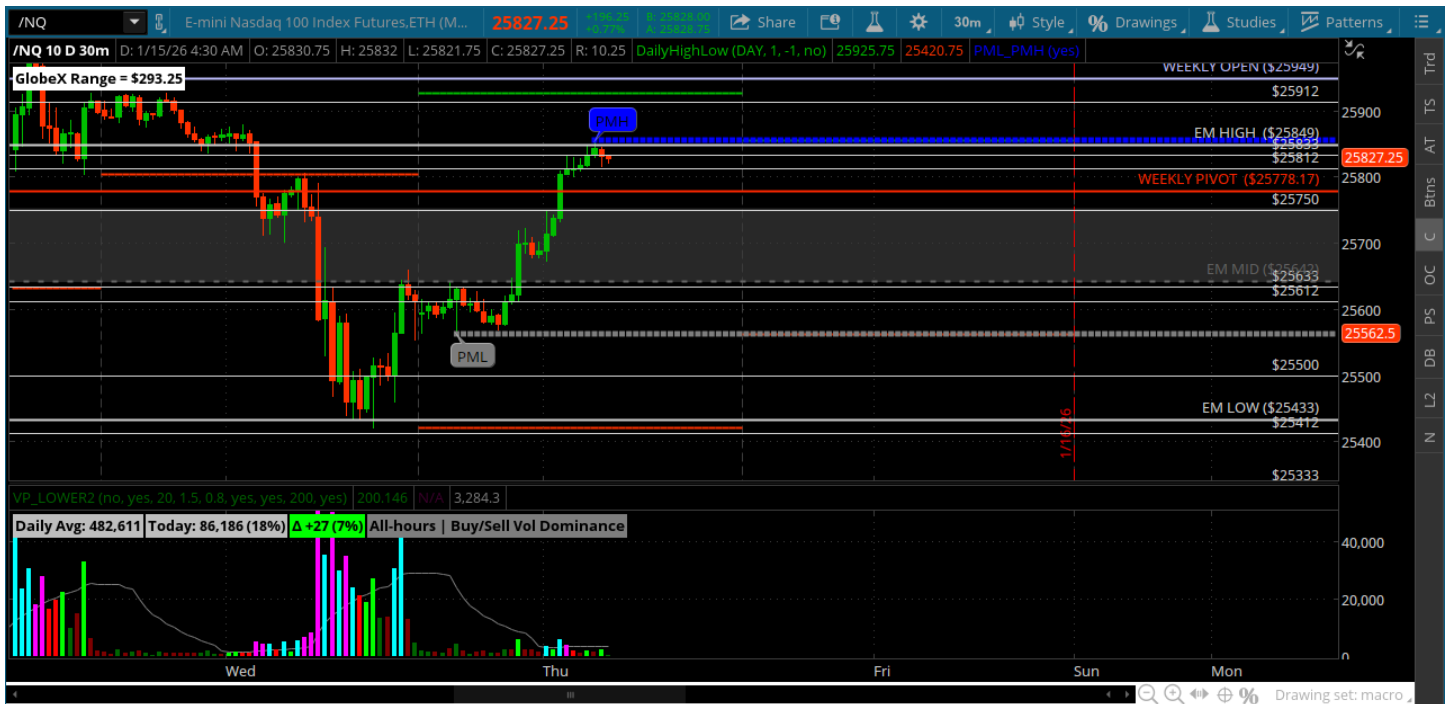
★ Low 6923.25

★ Close 6960.00

ES (Week Open) 7007.00

Pre-Market Charts to Watch

Thursday, January 15, 2025 Pre-Market /NQ 1 Hour Chart



- Push down to the 25500 and left the 25412 open
- A nice reversal once back above the 25500 and now dealing with 25833
- Now it is all about weekly pivot again – bullish above / bearish below

Disclaimer:

Disclaimer: Neither TheoTrade or any of its officers, directors, employees, other personnel, representatives, agents or independent contractors is, in such capacities, a licensed financial adviser, registered investment adviser, registered broker-dealer or FINRA|SIPC|NFA-member firm. TheoTrade does not provide investment or financial advice or make investment recommendations. TheoTrade is not in the business of transacting trades, nor does TheoTrade agree to direct your brokerage accounts or give trading advice tailored to your particular situation. Nothing contained in our content constitutes a solicitation, recommendation, promotion, or endorsement of any particular security, other investment product, transaction or investment. Trading Futures, Options on Futures, and retail off-exchange foreign currency transactions involves substantial risk of loss and is not suitable for all investors. You should carefully consider whether trading is suitable for you in light of your circumstances, knowledge, and financial resources. You may lose all or more of your initial investment. Opinions, market data, and recommendations are subject to change at any time. Past Performance is not necessarily indicative of future results.