



Tony Rago's Pre-Market Playbook

★ Overnight Range

- ES 24.25
- NQ 169.00
- VIX 15.67

★ **Bulls** need to hold above yest closes **6983 and 25707-- long above these**

★ Breakouts are above yesterday's highs **7017 and 29952 - aggressive longs** (await for confirmation with a new high and a retest of the highs from above that holds)

★ **Bears** need under overnight lows **short under 6982 and 25704**

★ Breakdown is below yest lows **6949 and 25562 -- aggressive shorts** (wait for

★ confirmation with a new low and a retest of the lows from below that hold)

★ **RANGEBOUND: 2 Way trade long and shorts will work** to get the day done

★ Keep it simple and be patient for confirmation on either side or establish the range if

★ we are going to be rangebound

★ Confirm rally continuation with sustained trade over the 30min IB High and likewise

★ bearish under the IB Low

ECON:

- 10:00 am Home builder confidence index
- 10:50 am Boston Fed President Susan Collins opening remarks
- 11:00 am Richmond Fed President Tom Barkin speaks
- 11:00 am Fed Vice Chair for Bank Supervision Michelle Bowman speaks
- 3:30 pm Federal Reserve Vice Chair Philip Jefferson speaks

Pre-Market Trading Levels for today

GLOBEX

NQ

★ **HIGH:** 25873.25

★ **LOW:** 25704.25

★ **Bull Case** defend the 25633 to seek the 25750, 25812, 25833, 25912, 26000, 26106, 26250, 26312, 26333, 26412, 26500

★ **Bear Case** seal the 26000 to seek the 25912, 25833, 25812, 25750, 25633, 25612, 25500, 25412, 25333, 25312, 25250, 25106

★ **Overnight Range - 169.00**

NQ (Prev. Day)

★ High 25952.75

★ Low 25562.50

★ Close 25707.00

NQ (Week Open) 25949.00

S&P 500

★ **HIGH** - 7007.00

★ **LOW** - 6982.75

★ **Bull Case:** defend the 6970 to seek the 6977, 6988, 7000, 7012, 7017, 7026, 7033, 7050, 7062, 7070, 7077

★ **Bear Case:** seal the 7012 to seek the 7000, 7026, 7017, 7000, 6988, 6977, 6962, 6950, 6933, 6926, 6917, 6912, 6900, 6888, 6877, 6862, 6850

★ **Overnight Range** - 24.25

ES (Prev Day)

★ High 7017.25

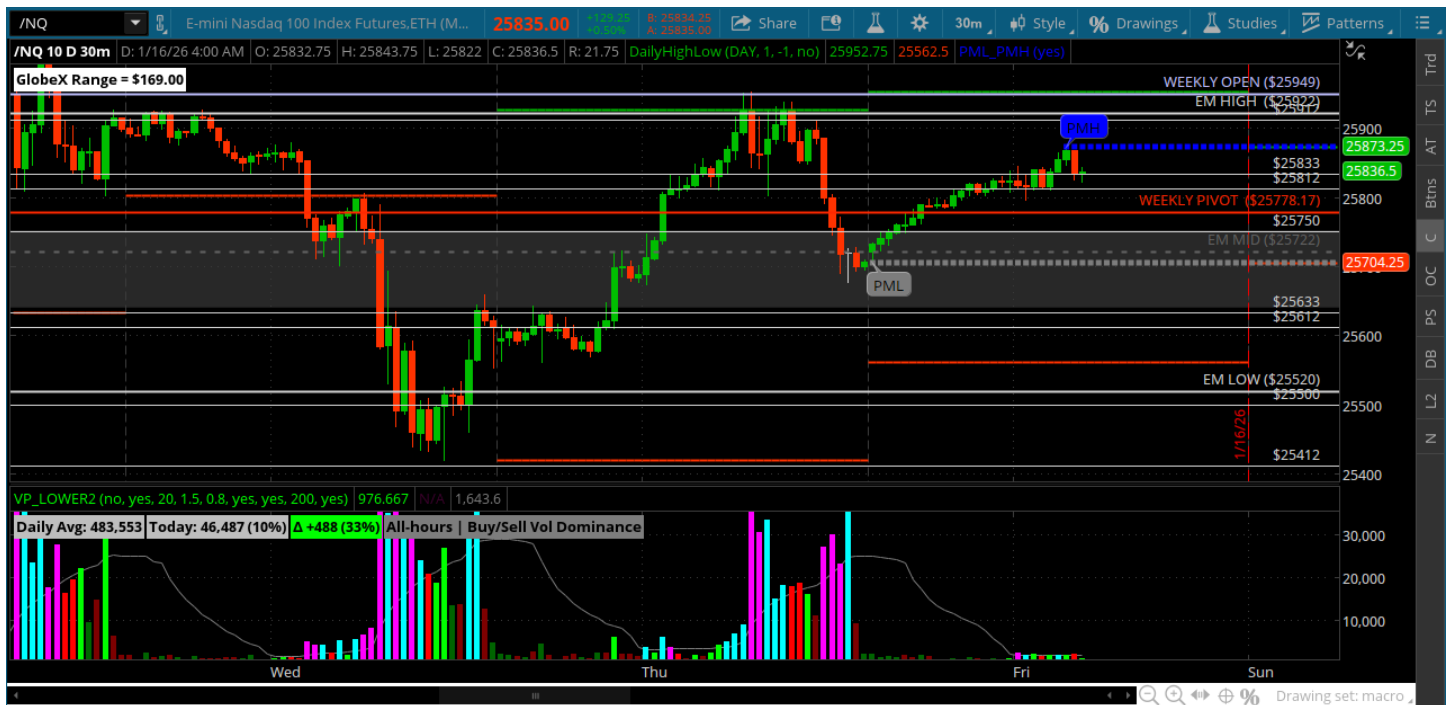
★ Low 6949.50

★ Close 6983.50

ES (Week Open) 7007.00

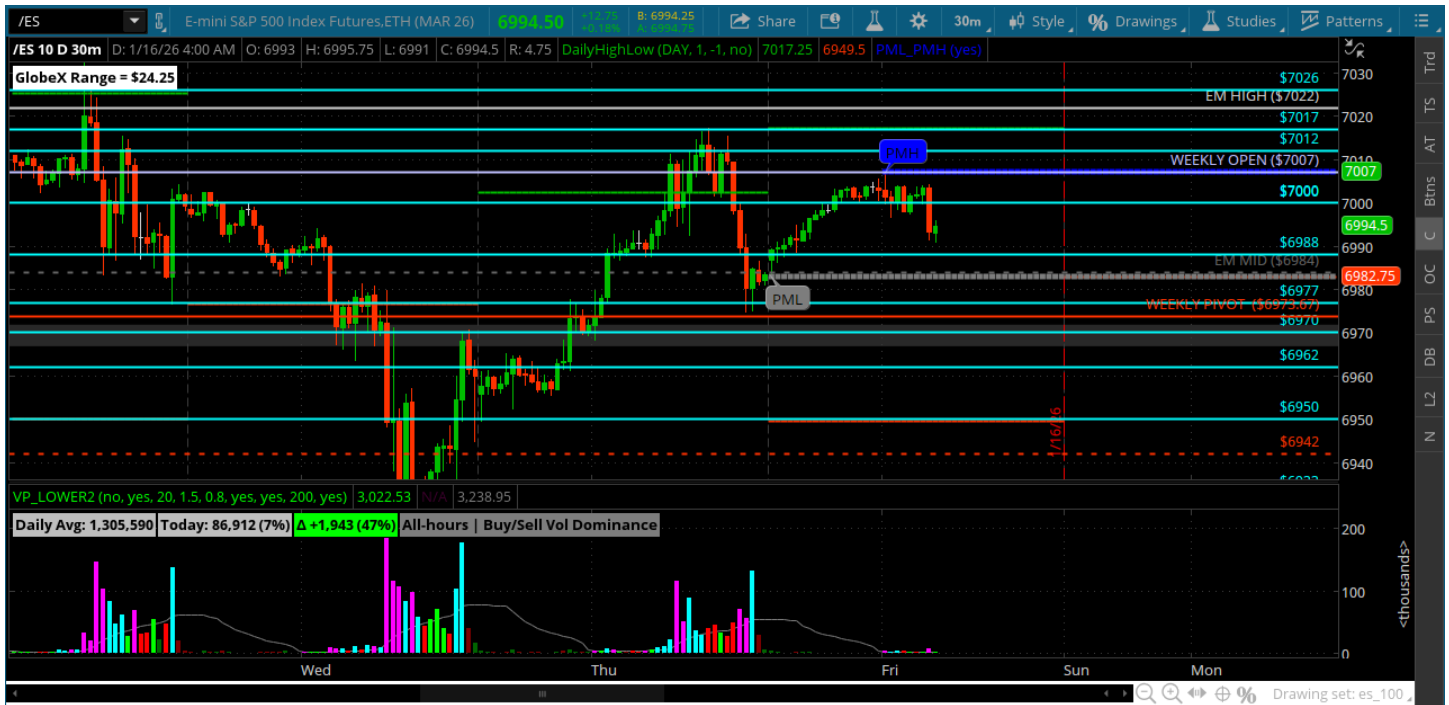
Pre-Market Charts to Watch

Friday, January 16, 2025 Pre-Market /NQ 1 Hour Chart



- The NQ open has become extremely volatile - may have to wait for the first 30mins if they continue to be like yesterday
- Still all about weekly pivot and now its Friday so its just the bull/bear
- Bullish above and can reach for 26k
- Bearish below and can reach for 25612/633

Friday, January 16, 2025 Pre-Market /ES 1 Hour Chart



- Price hangin above the weekly pivot and under the 7012
- Could be our range again today
- Big expiration today so lets trade what we see

Disclaimer:

Disclaimer: Neither TheoTrade or any of its officers, directors, employees, other personnel, representatives, agents or independent contractors is, in such capacities, a licensed financial adviser, registered investment adviser, registered broker-dealer or FINRA|SIPC|NFA-member firm. TheoTrade does not provide investment or financial advice or make investment recommendations. TheoTrade is not in the business of transacting trades, nor does TheoTrade agree to direct your brokerage accounts or give trading advice tailored to your particular situation. Nothing contained in our content constitutes a solicitation, recommendation, promotion, or endorsement of any particular security, other investment product, transaction or investment. Trading Futures, Options on Futures, and retail off-exchange foreign currency transactions involves substantial risk of loss and is not suitable for all investors. You should carefully consider whether trading is suitable for you in light of your circumstances, knowledge, and financial resources. You may lose all or more of your initial investment. Opinions, market data, and recommendations are subject to change at any time. Past Performance is not necessarily indicative of future results.