



Tony Rago's Pre-Market Playbook

★ Overnight Range

- ES 43.00
- NQ 221.50
- VIX 20.42

- ★ **Bulls** need to hold above yest closes **6837 and 25142-- long above these**
- ★ Breakouts are above yesterday's highs **6935 and 25472 - aggressive longs** (await for confirmation with a new high and a retest of the highs from above that holds)
- ★ **Bears** need under overnight lows **short under 6816 and 25025**
- ★ Breakdown is below yest lows **6822 and 25095 -- aggressive shorts** (wait for confirmation with a new low and a retest of the lows from below that hold)
- ★ **RANGEBOUND: 2 Way trade long and shorts will work** to get the day done
- ★ Keep it simple and be patient for confirmation on either side or establish the range if we are going to be rangebound
- ★ Confirm rally continuation with sustained trade over the 30min IB High and likewise
- ★ bearish under the IB Low

ECON:

- 10:00 am Construction spending
- 10:00 am Pending home sales

Pre-Market Trading Levels for today

GLOBEX

NQ

★ **HIGH:** 25246.50

★ **LOW:** 25025.00

★ **Bull Case** defend the 25000 to seek the 25106, 25250, 25312, 25333, 25412, 25500, 25612, 25633, 25750, 25812, 25833, 25912, 26000, 26106, 26250, 26312, 26333

★ **Bear Case** seal the 25500 to seek the 25412, 25333, 25312, 25250, 25106, 25000, 24912, 24833, 24812, 24750, 24633, 24612

★ **Overnight Range - 221.50**

NQ (Prev. Day)

★ High 25472.00

★ Low 25095.25

★ Close 25142.75

NQ (Week Open) 25471.00

S&P 500

★ **HIGH** - 6857.50

★ **LOW** - 6814.50

★ **Bull Case:** defend the 6800 to seek the 6812, 65817, 6826, 6833, 6842, 6850, 6862, 6877, 6888, 6900, 6912, 6917, 6926, 6933, 6942, 6950, 6962, 6977, 6988, 7000

★ **Bear Case:** seal the 6888 to seek the 6877, 6862, 6850, 6833, 6826, 6817, 6812, 6800, 6788, 6777, 6762, 6750

★ **Overnight Range** - 41.25

ES (Prev Day)

★ High 6935.00

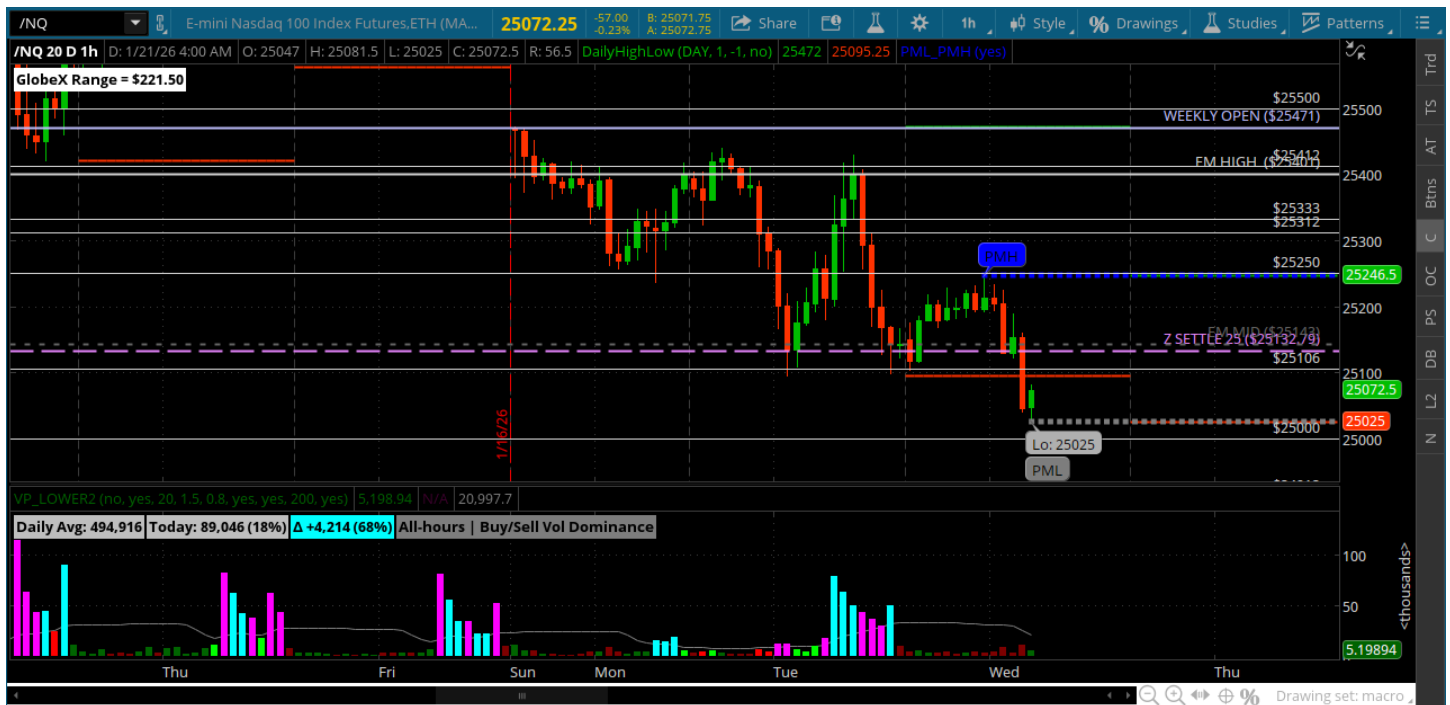
★ Low 6822.25

★ Close 6837.50

ES (Week Open) 6918.25

Pre-Market Charts to Watch

Wednesday, January 21, 2025 Pre-Market /NQ 1 Hour Chart



- Trend down day and closed on the Z SETTLE
- 25000 is open for a test and is a big level for bulls to defend
- Bulls need to reclaim that level and move back to the 25333, 25412 and 25500
- Bears can continue to sell rallies under the 25412

Disclaimer:

Disclaimer: Neither TheoTrade or any of its officers, directors, employees, other personnel, representatives, agents or independent contractors is, in such capacities, a licensed financial adviser, registered investment adviser, registered broker-dealer or FINRA|SIPC|NFA-member firm. TheoTrade does not provide investment or financial advice or make investment recommendations. TheoTrade is not in the business of transacting trades, nor does TheoTrade agree to direct your brokerage accounts or give trading advice tailored to your particular situation. Nothing contained in our content constitutes a solicitation, recommendation, promotion, or endorsement of any particular security, other investment product, transaction or investment. Trading Futures, Options on Futures, and retail off-exchange foreign currency transactions involves substantial risk of loss and is not suitable for all investors. You should carefully consider whether trading is suitable for you in light of your circumstances, knowledge, and financial resources. You may lose all or more of your initial investment. Opinions, market data, and recommendations are subject to change at any time. Past Performance is not necessarily indicative of future results.