



Tony Rago's Pre-Market Playbook

- ★ ES WEEKLY PIVOT 6905.75
- ★ NQ WEEKLY PIVOT 25517.08
- ★ Overnight Range
 - ES 71.25
 - NQ 376.75
 - VIX 16.78
- ★ **Bulls** need to hold above yest closes **6933 and 25680-- long above these**
- ★ Breakouts are above yesterday's highs **6964 and 25845 - aggressive longs** (await for confirmation with a new high and a retest of the highs from above that holds)
- ★ **Bears** need under overnight lows **short under 6879 and 25365**
- ★ Breakdown is below yest lows **6924 and 25540 -- aggressive shorts** (wait for confirmation with a new low and a retest of the lows from below that hold)
- ★ **RANGEBOUND: 2 Way trade long and shorts will work** to get the day done
- ★ Keep it simple and be patient for confirmation on either side or establish the range if we are going to be rangebound
- ★ Confirm rally continuation with sustained trade over the 30min IB High and likewise
- ★ bearish under the IB Low

ECON:

- 8:30 am Durable-goods orders (delayed report)

Pre-Market Trading Levels for today

GLOBEX

NQ

★ **HIGH:** 25742.00

★ **LOW:** 25365.25

★ **Bull Case** defend the 25500 to seek the 25612, 25633, 25750, 25812, 25833, 25912, 26000, 26106, 26250, 26312, 26333

★ **Bear Case** seal the 25750 to seek the 25633, 25612, 25500, 25412, 25333, 25312, 25250, 25106, 25000, 24912, 24833, 24812, 24750, 24633, 24612

★ **Overnight Range - 376.75**

NQ (Prev. Day)

★ High 25845.75

★ Low 25540.25

★ Close 25680.50

NQ (Week Open) 25585.50

S&P 500

★ **HIGH** - 6950.25

★ **LOW** - 6879.00

★ **Bull Case:** defend the 6877 to seek the 6888, 6900, 6912, 6917, 6926, 6933, 6942, 6950, 6962, 6977, 6988, 7000

★ **Bear Case:** seal the 6977 to seek the 6962, 6950, 6933, 6926, 6917, 6912, 6900, 6888, 6877, 6862, 6850, 6833, 6826, 6817, 6812, 6800, 6788, 6777, 6762, 6750

★ **Overnight Range** - 71.25

ES (Prev Day)

★ High 6964.00

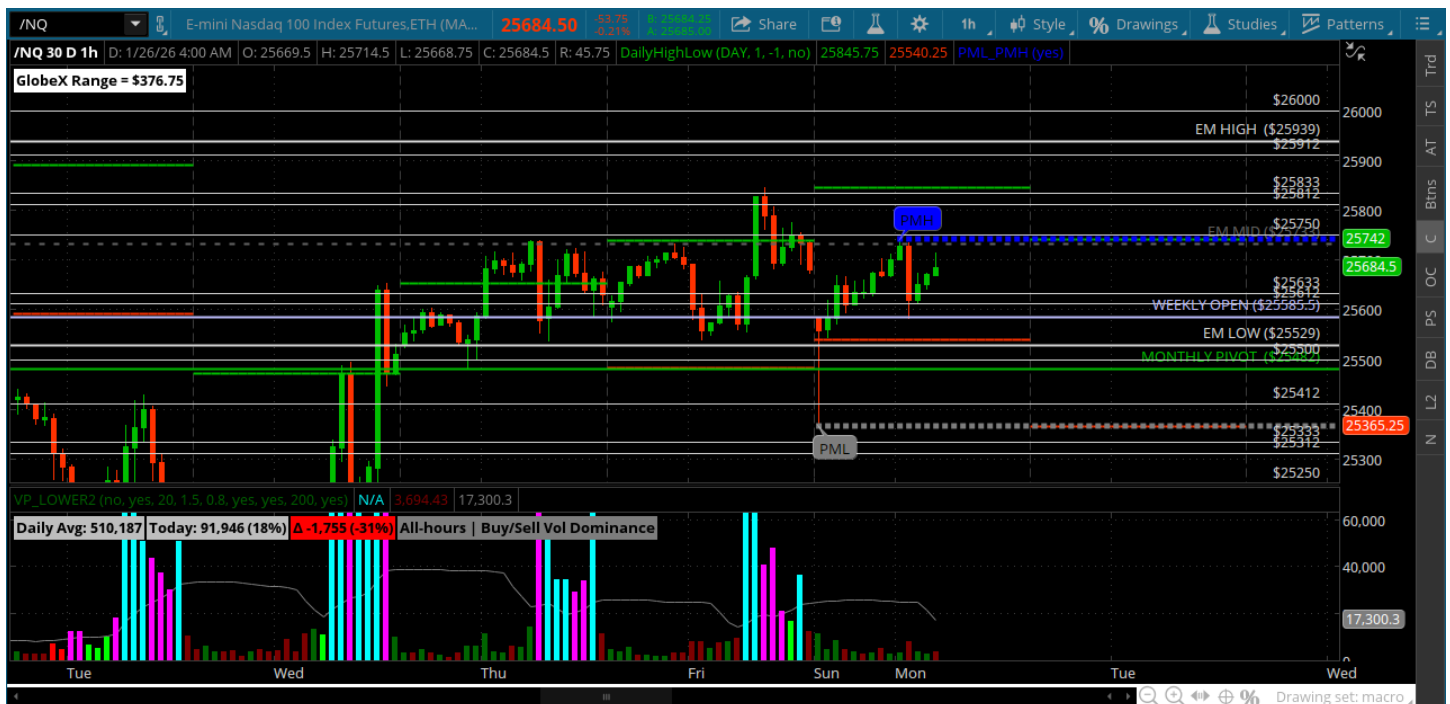
★ Low 6924.75

★ Close 6933.75

ES (Week Open) 6904.00

Pre-Market Charts to Watch

Monday, January 26, 2025 Pre-Market /NQ 1 Hour Chart



- Still battling here with the 25633
- Big gap down at open and filled overnight
- Sets up another potential big range for today
- Bulls need above the 25750 and close above it
- Bears need under the 25412 and close below it

Monday, January 26, 2025 Pre-Market /ES 1 Hour Chart



- Big gap down at open and weekly open basically on the 6900 roundy
- That will be the level to watch this week -- bulls need to hold price above
- A daily close below 6900 sets up a deeper pullback
- Large overnight range as well

Disclaimer:

Disclaimer: Neither TheoTrade or any of its officers, directors, employees, other personnel, representatives, agents or independent contractors is, in such capacities, a licensed financial adviser, registered investment adviser, registered broker-dealer or FINRA|SIPC|NFA-member firm. TheoTrade does not provide investment or financial advice or make investment recommendations. TheoTrade is not in the business of transacting trades, nor does TheoTrade agree to direct your brokerage accounts or give trading advice tailored to your particular situation. Nothing contained in our content constitutes a solicitation, recommendation, promotion, or endorsement of any particular security, other investment product, transaction or investment. Trading Futures, Options on Futures, and retail off-exchange foreign currency transactions involves substantial risk of loss and is not suitable for all investors. You should carefully consider whether trading is suitable for you in light of your circumstances, knowledge, and financial resources. You may lose all or more of your initial investment. Opinions, market data, and recommendations are subject to change at any time. Past Performance is not necessarily indicative of future results.