



Tony Rago's Pre-Market Playbook

★ Overnight Range

- ES 43.75
- NQ 210.50
- VIX 16.61

★ **Bulls** need to hold above yest closes **7016 and 26268-- long above these**

★ Breakouts are above yesterday's highs **7043 and 26349 - aggressive longs** (await for confirmation with a new high and a retest of the highs from above that holds)

★ **Bears** need under overnight lows **short under 6985 and 26085**

★ Breakdown is below yest lows **6977 and 25993 -- aggressive shorts** (wait for

★ confirmation with a new low and a retest of the lows from below that hold)

★ **RANGEBOUND: 2 Way trade long and shorts will work** to get the day done

★ Keep it simple and be patient for confirmation on either side or establish the range if

★ we are going to be rangebound

★ Confirm rally continuation with sustained trade over the 30min IB High and likewise

★ bearish under the IB Low

ECON:

- 8:30 am Initial jobless claims
- 8:30 am U.S. trade deficit (delayed report)
- 8:30 am U.S. productivity (revised)
- 10:00 am Wholesale inventories (delayed report)
- 10:00 am Factory orders (delayed report)
- 4:00 pm AAPL Reports

Pre-Market Trading Levels for today

GLOBEX

NQ

★ **HIGH:** 26296.00

★ **LOW:** 26085.50

★ **Bull Case** defend the 26106 to seek the 26106, 26250, 26312, 26333, 26412, 26500, 26612, 26633, 26750

★ **Bear Case** seal the 26333 to seek the 26312, 26250, 26106, 26000, 25912, 25833, 25750, 25633, 25612, 25500, 25412, 25333, 25312, 25250, 25106, 25000

★ **Overnight Range - 210.50**

NQ (Prev. Day)

★ High 26349.00

★ Low 25993.25

★ Close 26268.25

NQ (Week Open) 25585.50

S&P 500

★ **HIGH** - 7029.50

★ **LOW** - 6985.75

★ **Bull Case:** defend the 6988 to seek the 7000, 7012, 7017, 7026, 7033, 7042, 7050, 7062, 7077, 7088, 7100

★ **Bear Case:** seal the 7050 to seek the 7042, 7033, 7026, 7017, 7012, 7000, 6988, 6977, 6962, 6950, 6933, 6926, 6917, 6912, 6900, 6888, 6877

★ **Overnight Range** - 43.75

ES (Prev Day)

★ High 7043.00

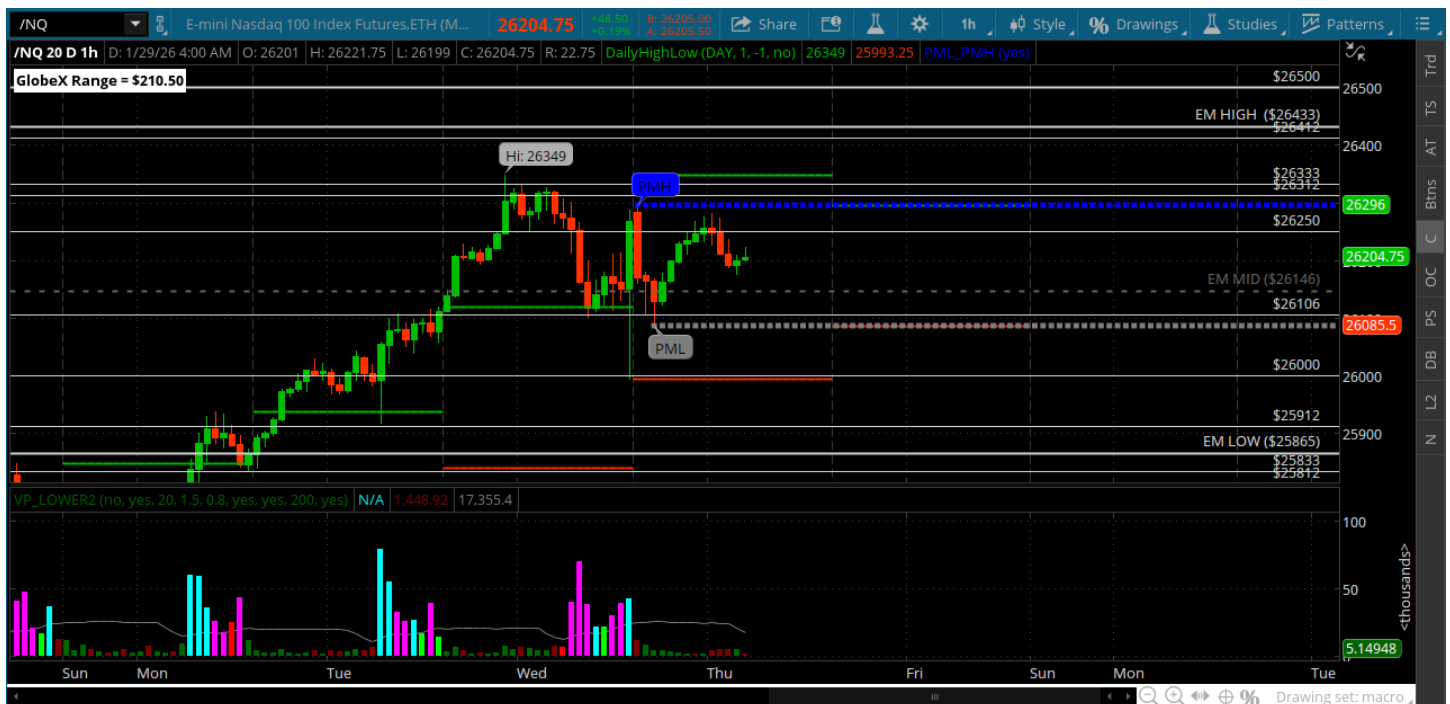
★ Low 6977.25

★ Close 7016.75

ES (Week Open) 6904.00

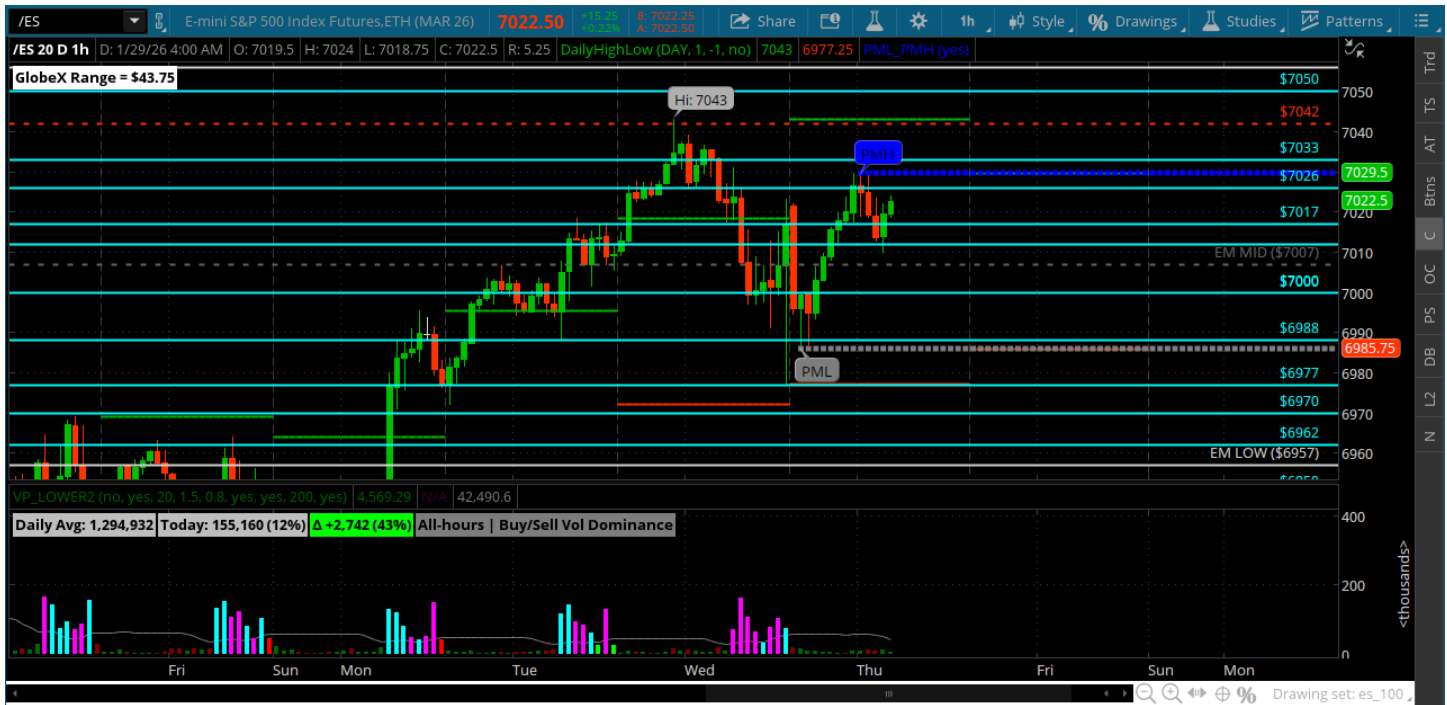
Pre-Market Charts to Watch

Thursday, January 29, 2025 Pre-Market /NQ 1 Hour Chart



- Big rejection off the 26k roundy with TSLA, MSFT, META earnings
- Bulls still need to hold the line at the 26106, 26000
- Big sell side liquidity under 26k with that rejection - watch for a sweep there
- Bearish under the 25912

Thursday, January 29, 2025 Pre-Market /ES 1 Hour Chart



-
- New highs overnight into the 7042 -- 100 handle block signals played out
- Leaves the 7050 open for a test as long as the 7012 holds
- FED day so quiet up to the announcement and then bang! should have some volatility
- The fallout is the trade as opposed to gaming what might happen.

Disclaimer:

Disclaimer: Neither TheoTrade or any of its officers, directors, employees, other personnel, representatives, agents or independent contractors is, in such capacities, a licensed financial adviser, registered investment adviser, registered broker-dealer or FINRA|SIPC|NFA-member firm. TheoTrade does not provide investment or financial advice or make investment recommendations. TheoTrade is not in the business of transacting trades, nor does TheoTrade agree to direct your brokerage accounts or give trading advice tailored to your particular situation. Nothing contained in our content constitutes a solicitation, recommendation, promotion, or endorsement of any particular security, other investment product, transaction or investment. Trading Futures, Options on Futures, and retail off-exchange foreign currency transactions involves substantial risk of loss and is not suitable for all investors. You should carefully consider whether trading is suitable for you in light of your circumstances, knowledge, and financial resources. You may lose all or more of your initial investment. Opinions, market data, and recommendations are subject to change at any time. Past Performance is not necessarily indicative of future results.