



Tony Rago's Pre-Market Playbook

★ Overnight Range

- ES 16.25
- NQ 117.75
- VIX 15.10

- ★ **Bulls** need to hold above yest closes **6988 and 25831-- long above these**
- ★ Breakouts are above yesterday's highs **6991 and 25837 - aggressive longs** (await for confirmation with a new high and a retest of the highs from above that holds)
- ★ **Bears** need under overnight lows **short under 6975 and 25727**
- ★ Breakdown is below yest lows **6931 and 25527 -- aggressive shorts** (wait for confirmation with a new low and a retest of the lows from below that hold)
- ★ **RANGEBOUND: 2 Way trade long and shorts will work** to get the day done
- ★ Keep it simple and be patient for confirmation on either side or establish the range if we are going to be rangebound
- ★ Confirm rally continuation with sustained trade over the 30min IB High and likewise
- ★ bearish under the IB Low
- ★

ECON:

- 10:00 am ISM services index
- 10:00 am Job openings
- 10:00 am U.S. factory orders
- 4:10 pm Fed Vice Chair for Supervision Michelle Bowman speaks

Pre-Market Trading Levels for today

GLOBEX

NQ

★ **HIGH:** 25844.75

★ **LOW:** 25727.00

★ **Bull Case** defend the 25612 to seek the 25633, 25750, 25812, 25833, 25912, 26000, 26106, 26250, 26312, 26333, 26412, 26500

★ **Bear Case** seal the 25833 to seek the 25812, 25750, 25633, 25612, 25500, 25412, 25333, 25312, 25250, 25106

★ **Overnight Range - 117.75**

NQ (Prev. Day)

★ High 25837.75

★ Low 25527.50

★ Close 25831.25

NQ (Week Open) 25431.75

S&P 500

★ **HIGH** - 6991.50

★ **LOW** - 6975.25

★ **Bull Case:** defend the 6962 to seek the 6977, 6988, 7000, 7012, 7017, 7026, 7033, 7050, 7062, 7070, 7077

★ **Bear Case:** seal the 7000 to seek the 6988, 6977, 6962, 6950, 6933, 6926, 6917, 6912, 6900, 6888, 6877, 6862, 6850

★ **Overnight Range** - 16.25

ES (Prev Day)

★ High 6991.50

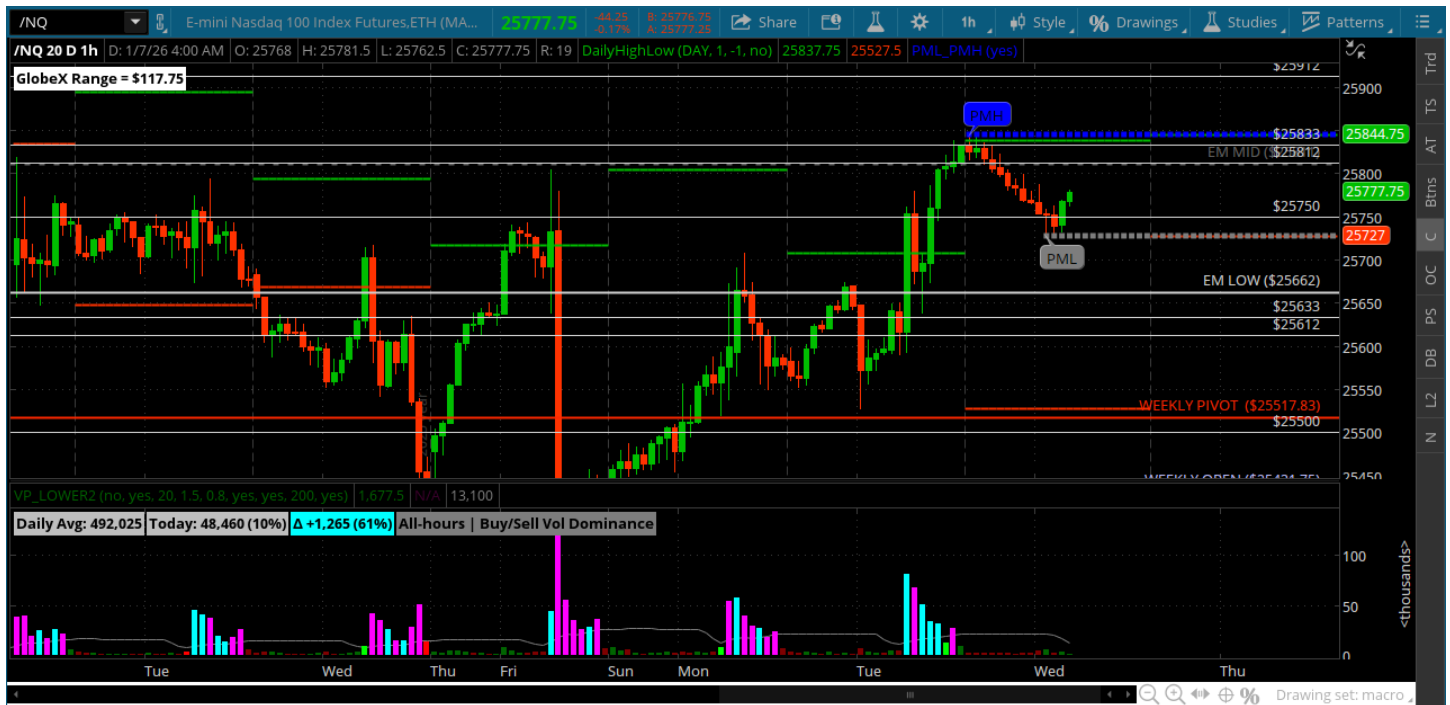
★ Low 6931.00

★ Close 6988.50

ES (Week Open) 6911.25

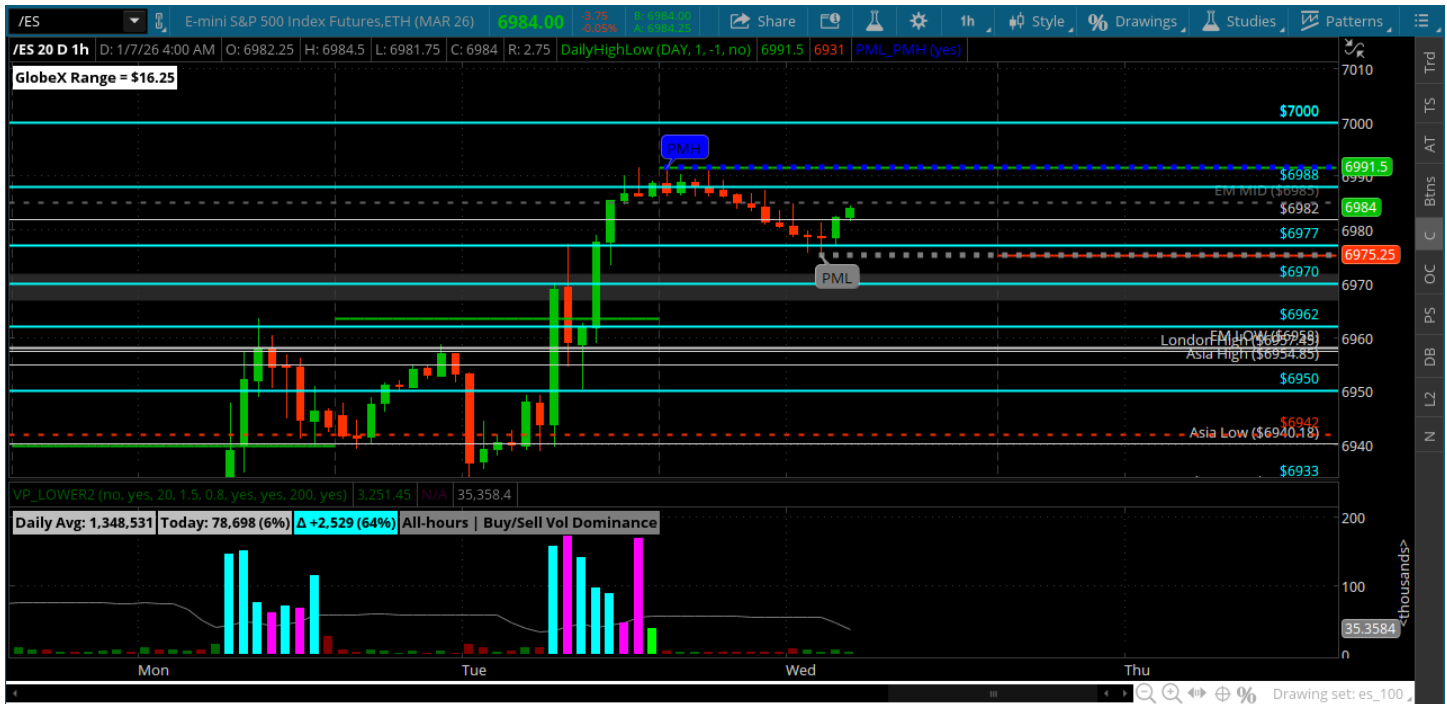
Pre-Market Charts to Watch

Wednesday, January 7, 2025 Pre-Market /NQ 1 Hour Chart



- Got the 25833 test and backed off to the 25750
- The 26000 remains elusive in spite of ES just off of its all time highs
- The close below 25750 opens a re-test of the 25633
- Bulls just need to hold the line on pullbacks -- the grind higher is slow
- Bearish under 25612

Wednesday, January 6, 2025 Pre-Market /ES 1 Hour Chart



- ES right at its all time high and eyeing the 7000 roundy for a test
- Bulls keep scooping up the pullbacks - market is very slow and needs a catalyst to push it to new highs
- Bulls need to hold the 6962 on a pullback
- Bearish under 6933

Disclaimer:

Disclaimer: Neither TheoTrade or any of its officers, directors, employees, other personnel, representatives, agents or independent contractors is, in such capacities, a licensed financial adviser, registered investment adviser, registered broker-dealer or FINRA|SIPC|NFA-member firm. TheoTrade does not provide investment or financial advice or make investment recommendations. TheoTrade is not in the business of transacting trades, nor does TheoTrade agree to direct your brokerage accounts or give trading advice tailored to your particular situation. Nothing contained in our content constitutes a solicitation, recommendation, promotion, or endorsement of any particular security, other investment product, transaction or investment. Trading Futures, Options on Futures, and retail off-exchange foreign currency transactions involves substantial risk of loss and is not suitable for all investors. You should carefully consider whether trading is suitable for you in light of your circumstances, knowledge, and financial resources. You may lose all or more of your initial investment. Opinions, market data, and recommendations are subject to change at any time. Past Performance is not necessarily indicative of future results.