



Tony Rago's Pre-Market Playbook

★ Overnight Range

- ES 27.75
- NQ 146.75
- VIX 15.10

- ★ **Bulls** need to hold above yest closes **6943 and 25578-- long above these**
- ★ Breakouts are above yesterday's highs **6963 and 25708 - aggressive longs** (await for confirmation with a new high and a retest of the highs from above that holds)
- ★ **Bears** need under overnight lows **short under 6931 and 25527**
- ★ Breakdown is below yest lows **6899 and 25406 -- aggressive shorts** (wait for confirmation with a new low and a retest of the lows from below that hold)
- ★ **RANGEBOUND: 2 Way trade long and shorts will work** to get the day done
- ★ Keep it simple and be patient for confirmation on either side or establish the range if we are going to be rangebound
- ★ Confirm rally continuation with sustained trade over the 30min IB High and likewise bearish under the IB Low
- ★

ECON:

- 9:45 am S&P final U.S. services PMI

Pre-Market Trading Levels for today

GLOBEX

NQ

★ **HIGH:** 25674.25

★ **LOW:** 25527.50

★ **Bull Case** defend the 25412 to seek the 25500, 25612, 25633, 25750, 25812, 25833, 25912, 26000, 26106, 26250, 26312, 26333, 26412, 26500

★ **Bear Case** seal the 25812 to seek the 25750, 25633, 25612, 25500, 25412, 25333, 25312, 25250, 25106

★ **Overnight Range - 146.75**

NQ (Prev. Day)

★ High 25708.00

★ Low 25406.50

★ Close 25578.25

NQ (Week Open) 25431.75

S&P 500

★ **HIGH** - 6958.75

★ **LOW** - 6931.00

★ **Bull Case:** defend the 6917 to seek the 6926, 6933, 6942, 6950, 6962, 6977, 6988, 7000, 7012, 7017, 7026, 7033, 7050, 7062, 7070, 7077

★ **Bear Case:** seal the 6977 to seek the 6962, 6950, 6933, 6926, 6917, 6912, 6900, 6888, 6877, 6862, 6850

★ **Overnight Range** - 27.75

ES (Prev Day)

★ High 6963.50

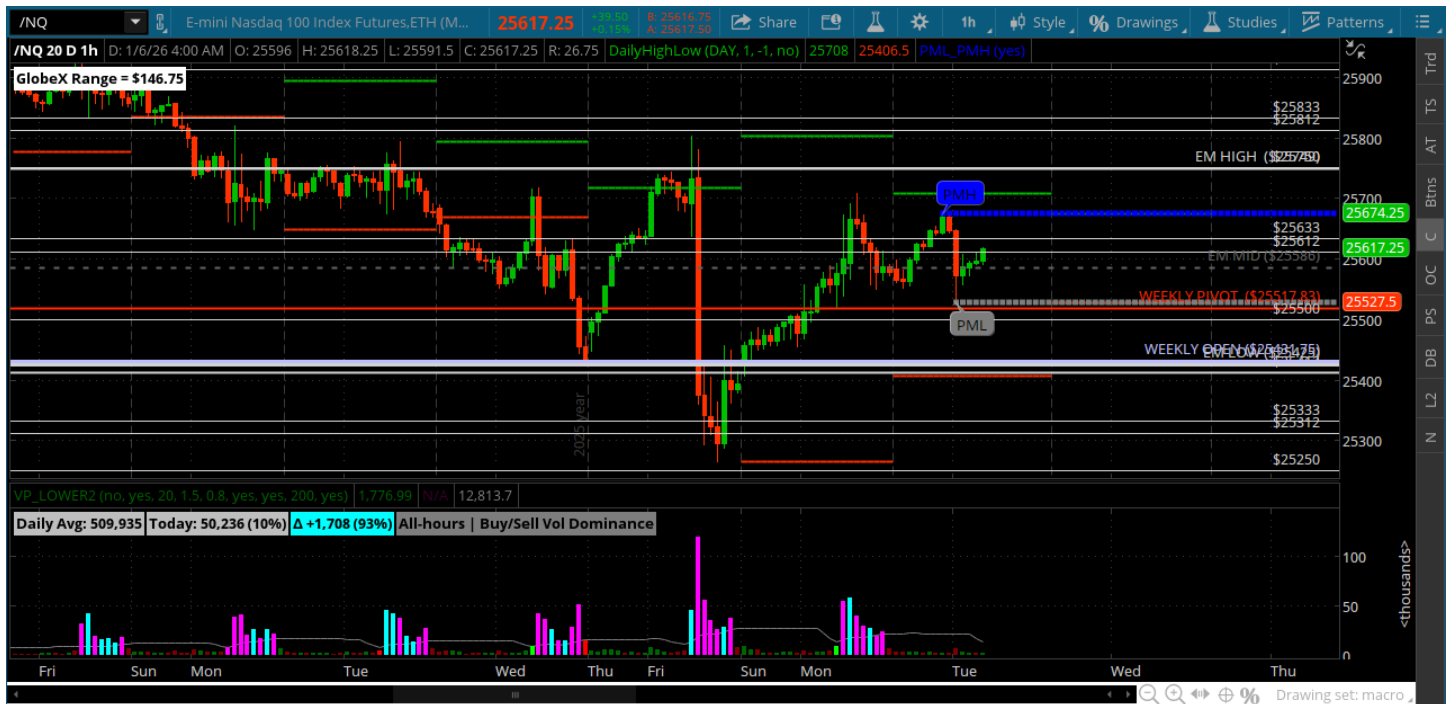
★ Low 6899.50

★ Close 6943.50

ES (Week Open) 6911.25

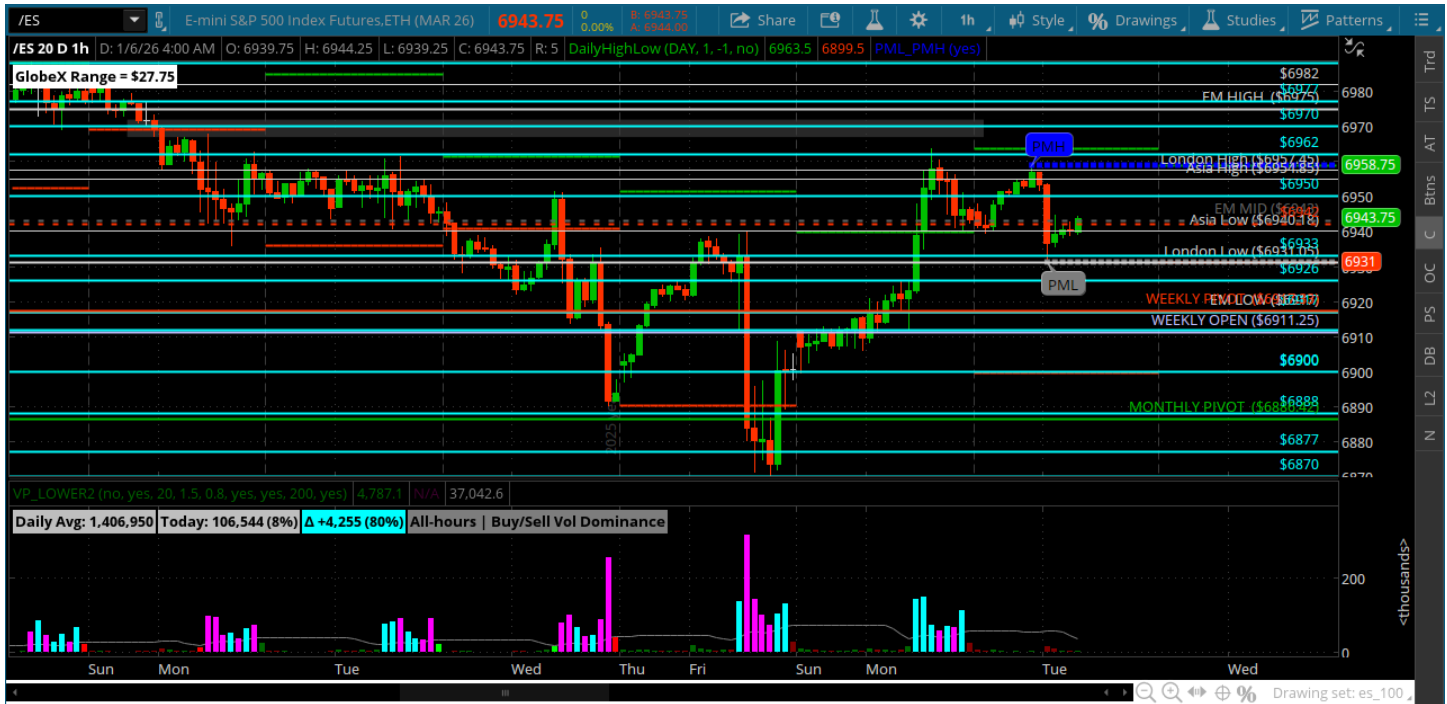
Pre-Market Charts to Watch

Tuesday, January 6, 2025 Pre-Market /NQ 1 Hour Chart



- Still in the middle of Fridays range -- no commitment from either side yet
- Bulls need to get and stay above the 25633 and go get the 25750
- Likewise bears want to get and stay under the 25500 and then 25412
- Those are the levels to watch for a break either way

Tuesday, January 6, 2025 Pre-Market /ES 1 Hour Chart



- ES broke above Fridays high and tagged the 6962 and backed off
- Bulls need to defend the 6926/17 on pullbacks and convert the 6950 to go after the 6962 and 6977
- Bears need under the 6917 and that would open the 6900 for a test

Disclaimer:

Disclaimer: Neither TheoTrade or any of its officers, directors, employees, other personnel, representatives, agents or independent contractors is, in such capacities, a licensed financial adviser, registered investment adviser, registered broker-dealer or FINRA|SIPC|NFA-member firm. TheoTrade does not provide investment or financial advice or make investment recommendations. TheoTrade is not in the business of transacting trades, nor does TheoTrade agree to direct your brokerage accounts or give trading advice tailored to your particular situation. Nothing contained in our content constitutes a solicitation, recommendation, promotion, or endorsement of any particular security, other investment product, transaction or investment. Trading Futures, Options on Futures, and retail off-exchange foreign currency transactions involves substantial risk of loss and is not suitable for all investors. You should carefully consider whether trading is suitable for you in light of your circumstances, knowledge, and financial resources. You may lose all or more of your initial investment. Opinions, market data, and recommendations are subject to change at any time. Past Performance is not necessarily indicative of future results.