



## *Tony Rago's Pre-Market Playbook*

---

### ★ Overnight Range

- ES 19.75
- NQ 139.75
- VIX 15.76

- ★ **Bulls** need to hold above yest closes **6971 and 25712-- long above these**
- ★ Breakouts are above yesterday's highs **6977 and 25850 - aggressive longs** (await for confirmation with a new high and a retest of the highs from above that holds)
- ★ **Bears** need under overnight lows **short under 6954 and 25627**
- ★ Breakdown is below yest lows **6935 and 25569 -- aggressive shorts** (wait for confirmation with a new low and a retest of the lows from below that hold)
- ★ **RANGEBOUND: 2 Way trade long and shorts will work** to get the day done
- ★ Keep it simple and be patient for confirmation on either side or establish the range if we are going to be rangebound
- ★ Confirm rally continuation with sustained trade over the 30min IB High and likewise bearish under the IB Low
- ★

### ECON:

- 8:30 am U.S. employment report Dec.
- 8:30 am U.S. housing starts
- 10:00 am UMich consumer sentiment
- 10:00 am Minneapolis Fed President Neel Kashkari speaks
- 1:35 pm Richmond Fed President Tom Barkin speaks

## *Pre-Market Trading Levels for today*

---

### GLOBEX

#### NQ

★ **HIGH:** 25795.50

★ **LOW:** 25627.50

★ **Bull Case** defend the 25612 to seek the 25633, 25750, 25812, 25833, 25912, 26000, 26106, 26250, 26312, 26333, 26412, 26500

★ **Bear Case** seal the 25833 to seek the 25812, 25750, 25633, 25612, 25500, 25412, 25333, 25312, 25250, 25106

★ **Overnight Range - 168.00**

#### NQ (Prev. Day)

★ High 25849.75

★ Low 25569.00

★ Close 25712.00

**NQ (Week Open) 25431.75**

## S&P 500

★ **HIGH** - 6974.00

★ **LOW** - 6954.25

★ **Bull Case:** defend the 6942 to seek the 6950, 6962, 6977, 6988, 7000, 7012, 7017, 7026, 7033, 7050, 7062, 7070, 7077

★ **Bear Case:** seal the 7000 to seek the 6988, 6977, 6962, 6950, 6933, 6926, 6917, 6912, 6900, 6888, 6877, 6862, 6850

★ **Overnight Range** - 31.75

### ES (Prev Day)

★ High 6977.75

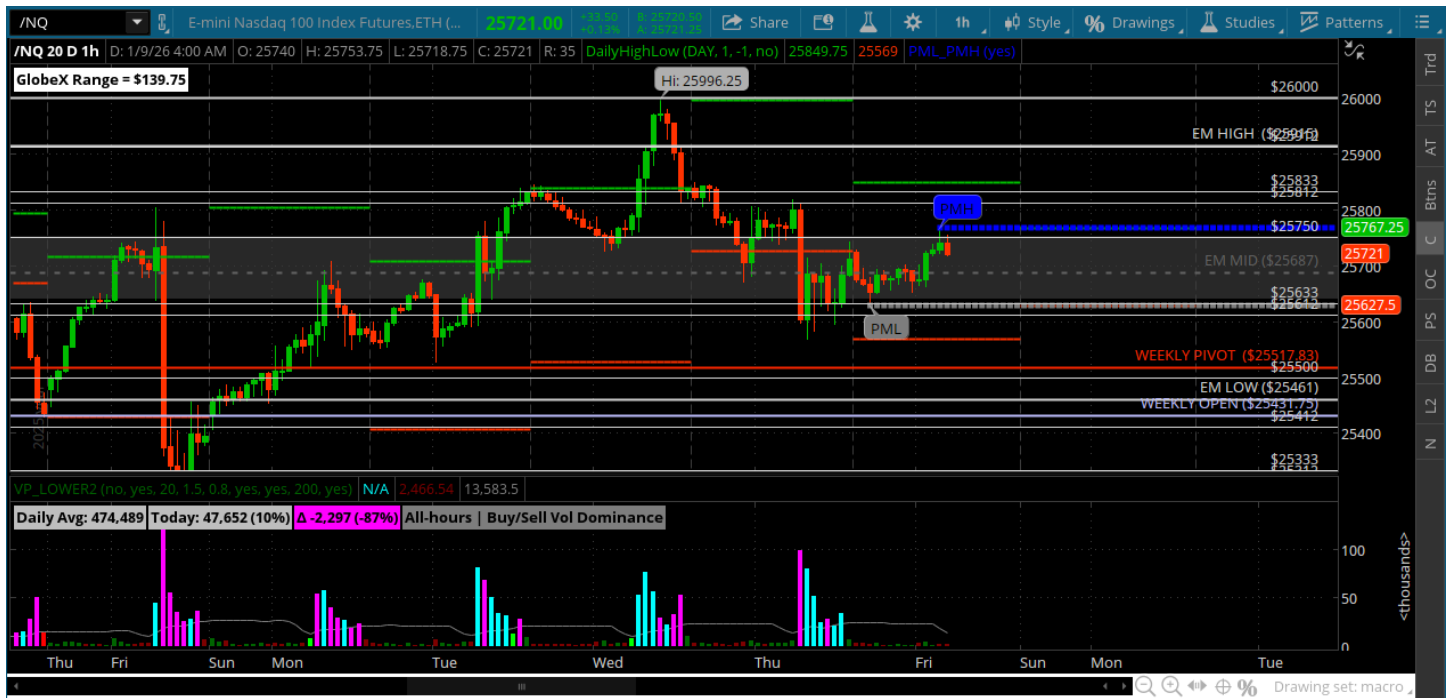
★ Low 6935.25

★ Close 6971.25

**ES (Week Open) 6911.25**

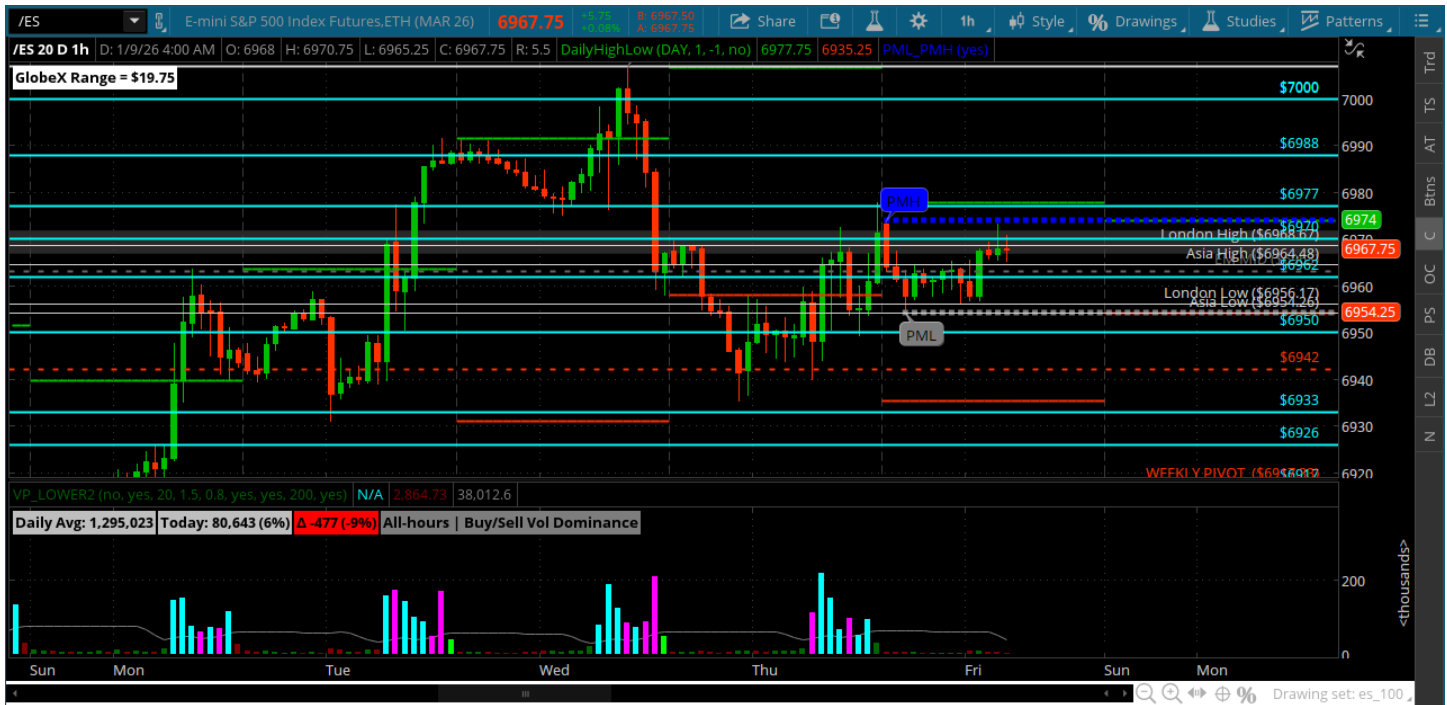
## Pre-Market Charts to Watch

Friday, January 9, 2025 Pre-Market /NQ 1 Hour Chart



- Range day yesterday that was a bit nasty on the price action side -- tough to trade
- Looks easy in hindsight but was not the nicest of tapes
- Hope you made it out ok
- Its all about breaking out of this range -- NQ continues to be a laggard in spite of some big moves by Nasdaq companies

## Friday, January 9, 2025 Pre-Market /ES 1 Hour Chart



- Range between the 6950 and 6977 yesterday -- no commitment on a break either way just a garden variety range day
-

*Disclaimer:*

Disclaimer: Neither TheoTrade or any of its officers, directors, employees, other personnel, representatives, agents or independent contractors is, in such capacities, a licensed financial adviser, registered investment adviser, registered broker-dealer or FINRA|SIPC|NFA-member firm. TheoTrade does not provide investment or financial advice or make investment recommendations. TheoTrade is not in the business of transacting trades, nor does TheoTrade agree to direct your brokerage accounts or give trading advice tailored to your particular situation. Nothing contained in our content constitutes a solicitation, recommendation, promotion, or endorsement of any particular security, other investment product, transaction or investment. Trading Futures, Options on Futures, and retail off-exchange foreign currency transactions involves substantial risk of loss and is not suitable for all investors. You should carefully consider whether trading is suitable for you in light of your circumstances, knowledge, and financial resources. You may lose all or more of your initial investment. Opinions, market data, and recommendations are subject to change at any time. Past Performance is not necessarily indicative of future results.