



## *Tony Rago's Pre-Market Playbook*

### ★ Overnight Range

- ES 15.25
- NQ 108.25
- VIX 15.24

- ★ **Bulls** need to hold above yest closes **7011** and **25924**-- long above these
- ★ Breakouts are above yesterday's highs **7025** and **26020** - **aggressive longs** (await for confirmation with a new high and a retest of the highs from above that holds)
- ★ **Bears** need under overnight lows **short under 6998** and **25845**
- ★ Breakdown is below yest lows **6950** and **25632** -- **aggressive shorts** (wait for confirmation with a new low and a retest of the lows from below that hold)
- ★ **RANGEBOUND: 2 Way trade long and shorts will work** to get the day done
- ★ Keep it simple and be patient for confirmation on either side or establish the range if we are going to be rangebound
- ★ Confirm rally continuation with sustained trade over the 30min IB High and likewise bearish under the IB Low
- ★

### ECON:

- 8:30 am CPI year over year
- 8:30 am Core CPI
- 10:00 am U.S. new home sales
- 10:00 am St. Louis Fed President Alberto Musalem speaks
- 2:00 pm U.S. budget deficit Dec.
- 4:00 pm Richmond Fed President Tom Barkin speaks

## *Pre-Market Trading Levels for today*

---

### GLOBEX

#### NQ

★ **HIGH:** 26045.50

★ **LOW:** 25845.75

★ **Bull Case** defend the 25750 to seek the 25812, 25833, 25912, 26000, 26106, 26250, 26312, 26333, 26412, 26500

★ **Bear Case** seal the 26106 to seek the 26000, 25912, 25833, 25812, 25750, 25633, 25612, 25500, 25412, 25333, 25312, 25250, 25106

★ **Overnight Range - 199.75**

#### NQ (Prev. Day)

★ High 26020.50

★ Low 25632.75

★ Close 25942.25

**NQ (Week Open) 25949.00**

## S&P 500

★ **HIGH** - 7036.25

★ **LOW** - 6998.75

★ **Bull Case:** defend the 6977 to seek the 6988, 7000, 7012, 7017, 7026, 7033, 7050, 7062, 7070, 7077

★ **Bear Case:** seal the 7033 to seek the 7026, 7017, 7000, 6988, 6977, 6962, 6950, 6933, 6926, 6917, 6912, 6900, 6888, 6877, 6862, 6850

★ **Overnight Range** - 37.50

### ES (Prev Day)

★ High 7025.25

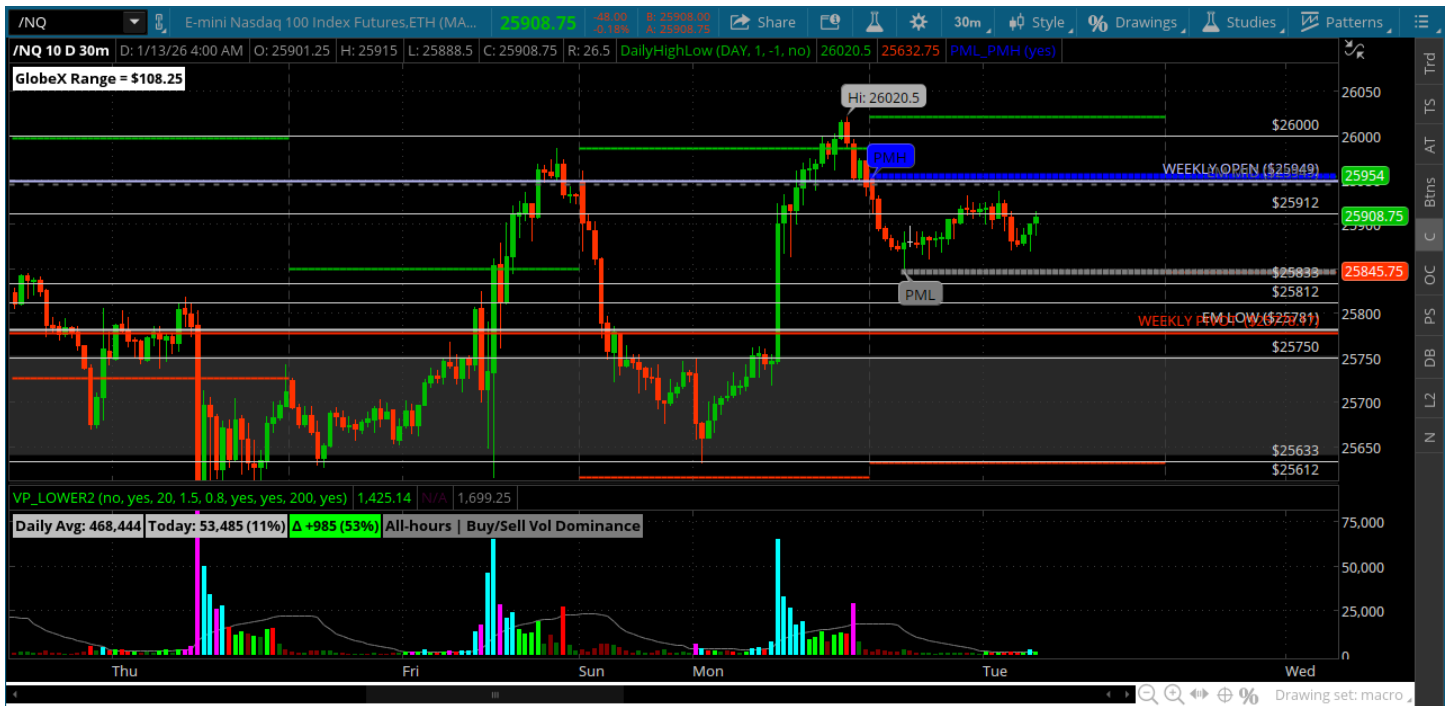
★ Low 6950.00

★ Close 7011.50

**ES (Week Open) 7007.00**

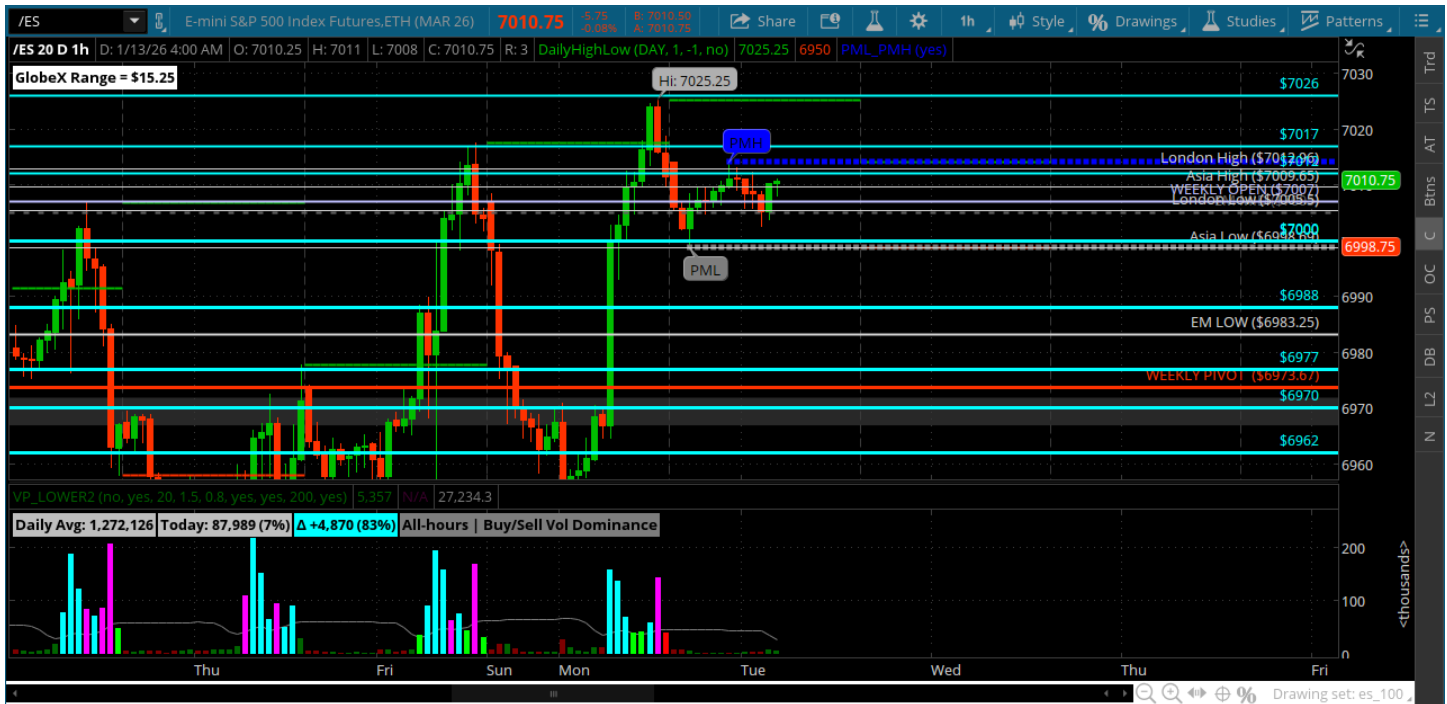
# Pre-Market Charts to Watch

Tuesday, January 13, 2025 Pre-Market /NQ 1 Hour Chart



- 26K gets a test and leaves the 26106 open
- Bulls need to hold the 25833 and the 26912 on pullbacks
- The also need to close above the weekly open on the daily
- Bearish back under weekly pivot and the 25612

## Tuesday, January 13, 2025 Pre-Market /ES 1 Hour Chart



- New highs into the 7026 - still needs a proper test
- All about the 7000 now
- Bulls need to hold a pullback to the 6977 and move to the 7026
- Bearish under the 6942
-

*Disclaimer:*

Disclaimer: Neither TheoTrade or any of its officers, directors, employees, other personnel, representatives, agents or independent contractors is, in such capacities, a licensed financial adviser, registered investment adviser, registered broker-dealer or FINRA|SIPC|NFA-member firm. TheoTrade does not provide investment or financial advice or make investment recommendations. TheoTrade is not in the business of transacting trades, nor does TheoTrade agree to direct your brokerage accounts or give trading advice tailored to your particular situation. Nothing contained in our content constitutes a solicitation, recommendation, promotion, or endorsement of any particular security, other investment product, transaction or investment. Trading Futures, Options on Futures, and retail off-exchange foreign currency transactions involves substantial risk of loss and is not suitable for all investors. You should carefully consider whether trading is suitable for you in light of your circumstances, knowledge, and financial resources. You may lose all or more of your initial investment. Opinions, market data, and recommendations are subject to change at any time. Past Performance is not necessarily indicative of future results.