



Tony Rago's Pre-Market Playbook

★ Overnight Range

- ES 44.75
- NQ 232.00
- VIX 16.17

- ★ **Bulls** need to hold above yest closes **6915 and 25509-- long above these**
- ★ Breakouts are above yesterday's highs **6945 and 25653 - aggressive longs** (await for confirmation with a new high and a retest of the highs from above that holds)
- ★ **Bears** need under overnight lows **short under 6911 and 25483**
- ★ Breakdown is below yest lows **6814 and 25025 -- aggressive shorts** (wait for confirmation with a new low and a retest of the lows from below that hold)
- ★ **RANGEBOUND: 2 Way trade long and shorts will work** to get the day done
- ★ Keep it simple and be patient for confirmation on either side or establish the range if we are going to be rangebound
- ★ Confirm rally continuation with sustained trade over the 30min IB High and likewise
- ★ bearish under the IB Low

ECON:

- 8:30 am Initial jobless claims
- 8:30 am GDP
- 10:00 am PCE index

Pre-Market Trading Levels for today

GLOBEX

NQ

★ **HIGH:** 25515.75

★ **LOW:** 25483.75

★ **Bull Case** defend the 25500 to seek the 25612, 25633, 25750, 25812, 25833, 25912, 26000, 26106, 26250, 26312, 26333

★ **Bear Case** seal the 25750 to seek the 25633, 25612, 25500, 25412, 25333, 25312, 25250, 25106, 25000, 24912, 24833, 24812, 24750, 24633, 24612

★ **Overnight Range - 232.00**

NQ (Prev. Day)

★ High 25653.50

★ Low 25025.00

★ Close 25509.50

NQ (Week Open) 25471.00

S&P 500

★ **HIGH** - 6956.00

★ **LOW** - 6911.25

★ **Bull Case:** defend the 6877 to seek the 6888, 6900, 6912, 6917, 6926, 6933, 6942, 6950, 6962, 6977, 6988, 7000

★ **Bear Case:** seal the 6950 to seek the 6933, 6926, 6917, 6912, 6900, 6888, 6877, 6862, 6850, 6833, 6826, 6817, 6812, 6800, 6788, 6777, 6762, 6750

★ **Overnight Range** - 44.75

ES (Prev Day)

★ High 6945.25

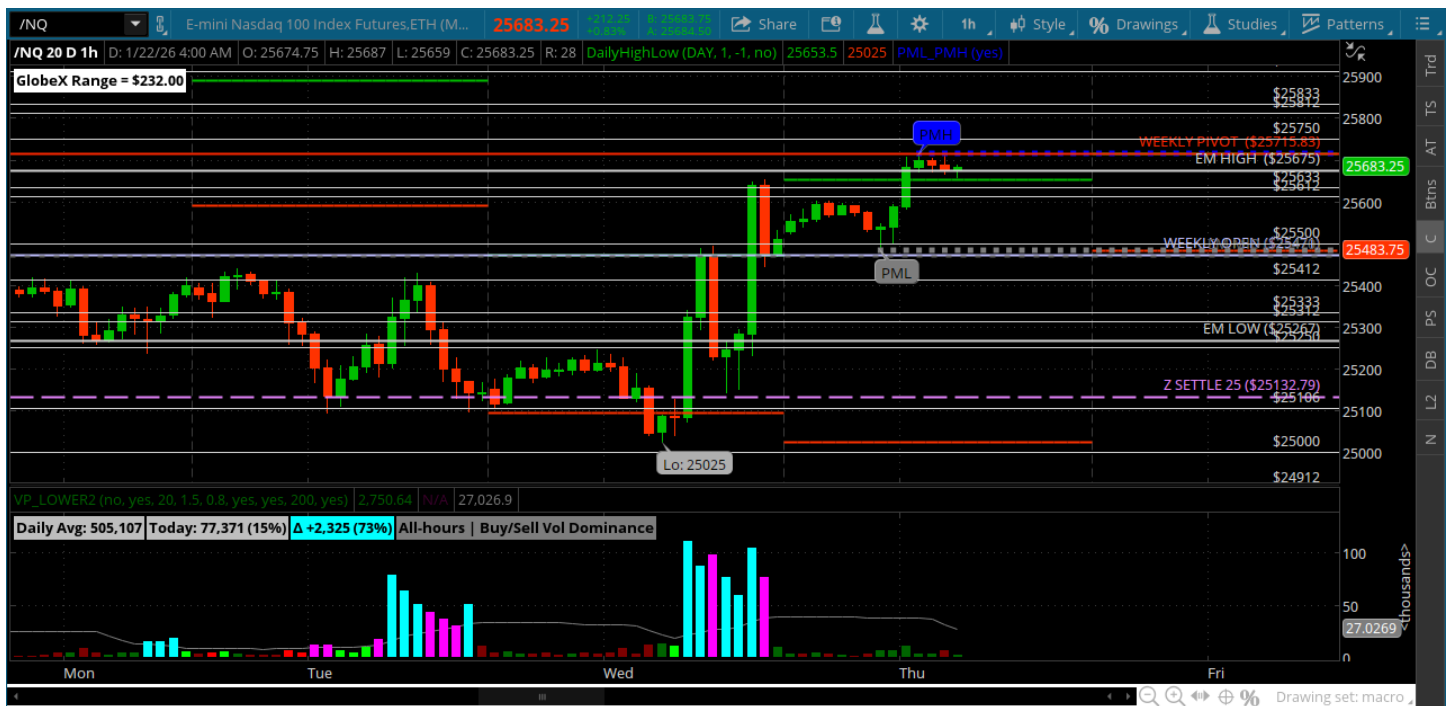
★ Low 6814.50

★ Close 6915.75

ES (Week Open) 6918.25

Pre-Market Charts to Watch

Wednesday, January 22, 2025 Pre-Market /NQ 1 Hour Chart



- Bulls reclaim the 25132 and get a headline that ripped 500pts to the upside
- Bulls need to hold pullbacks to the 25412
- Bears want to hold the 25750 in to go retest the 25500, 25412

Disclaimer:

Disclaimer: Neither TheoTrade or any of its officers, directors, employees, other personnel, representatives, agents or independent contractors is, in such capacities, a licensed financial adviser, registered investment adviser, registered broker-dealer or FINRA|SIPC|NFA-member firm. TheoTrade does not provide investment or financial advice or make investment recommendations. TheoTrade is not in the business of transacting trades, nor does TheoTrade agree to direct your brokerage accounts or give trading advice tailored to your particular situation. Nothing contained in our content constitutes a solicitation, recommendation, promotion, or endorsement of any particular security, other investment product, transaction or investment. Trading Futures, Options on Futures, and retail off-exchange foreign currency transactions involves substantial risk of loss and is not suitable for all investors. You should carefully consider whether trading is suitable for you in light of your circumstances, knowledge, and financial resources. You may lose all or more of your initial investment. Opinions, market data, and recommendations are subject to change at any time. Past Performance is not necessarily indicative of future results.