



Tony Rago's Pre-Market Playbook

★ Overnight Range

- ES 77.50
- NQ 370.25
- VIX 18.03

★ **Bulls** need to hold above yest closes **6989 and 25982-- long above these**

★ Breakouts are above yesterday's highs **7029 and 26296 - aggressive longs** (await for confirmation with a new high and a retest of the highs from above that holds)

★ **Bears** need under overnight lows **short under 6917 and 25649**

★ Breakdown is below yest lows **6898 and 25536 -- aggressive shorts** (wait for

★ confirmation with a new low and a retest of the lows from below that hold)

★ **RANGEBOUND: 2 Way trade long and shorts will work** to get the day done

★ Keep it simple and be patient for confirmation on either side or establish the range if

★ we are going to be rangebound

★ Confirm rally continuation with sustained trade over the 30min IB High and likewise

★ bearish under the IB Low

ECON:

- 8:30 am Producer price index
- 8:30 am Core PPI
- 9:45 am Chicago Business Barometer (PMI)
- 1:00 pm Fed Gov. Stephen Miran TV interview
- 1:30 pm St Louis Fed President Alberto Musalem speech

Pre-Market Trading Levels for today

GLOBEX

NQ

★ **HIGH:** 26020.00

★ **LOW:** 25649.75

★ **Bull Case** defend the 25750 to seek the 25812, 25833, 25912, 26000, 26106, 26250, 26312, 26333, 26412, 26500, 26612, 26633, 26750

★ **Bear Case** seal the 26106 to seek the 26000, 25912, 25833, 25750, 25633, 25612, 25500, 25412, 25333, 25312, 25250, 25106, 25000

★ **Overnight Range - 370.25**

NQ (Prev. Day)

★ High 26296.00

★ Low 25536.00

★ Close 25982.50

NQ (Week Open) 25585.50

S&P 500

★ **HIGH** - 6995.00

★ **LOW** - 6917.50

★ **Bull Case:** defend the 6917 to seek the 6926, 6933, 6942, 6950, 6962, 6977, 6988, 7000, 7012, 7017, 7026, 7033, 7042, 7050, 7062, 7077, 7088, 7100

★ **Bear Case:** seal the 7000 to seek the 6988, 6977, 6962, 6950, 6933, 6926, 6917, 6912, 6900, 6888, 6877

★ **Overnight Range** - 77.50

ES (Prev Day)

★ High 7029.50

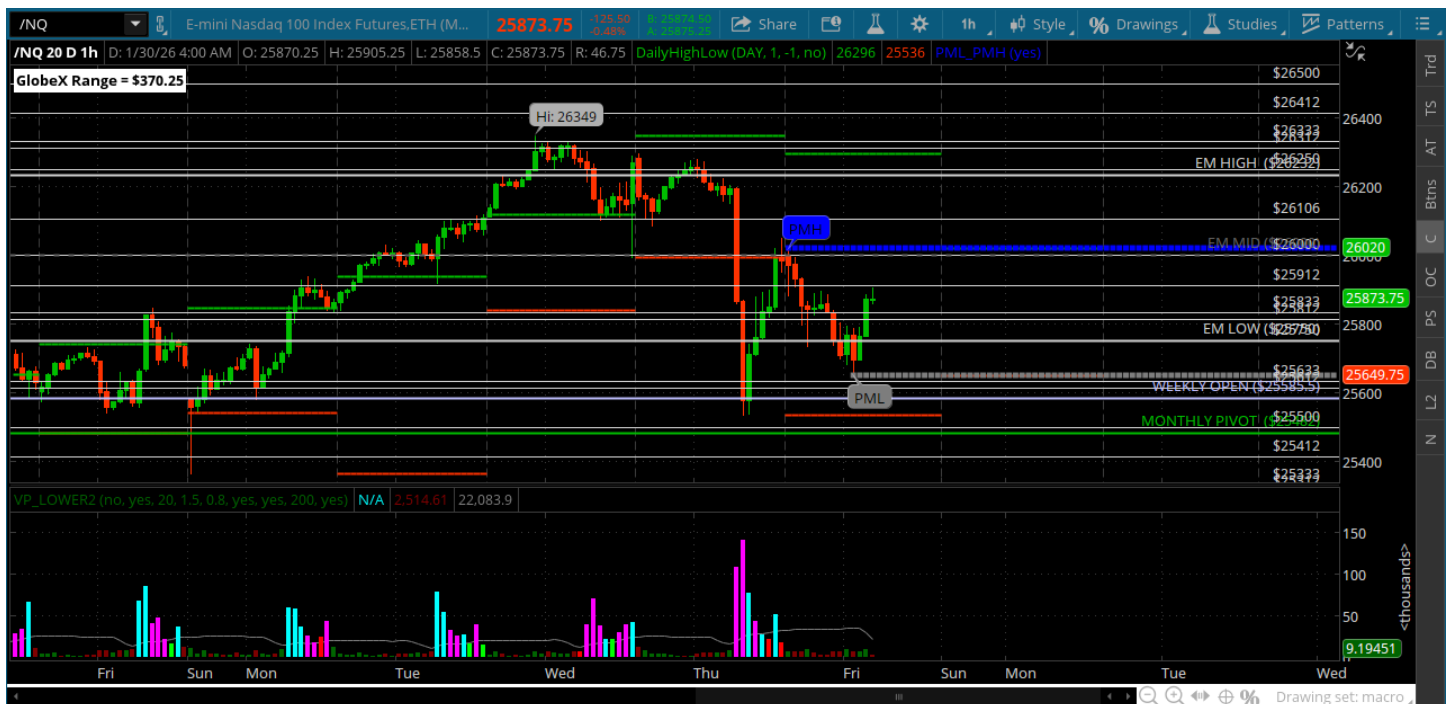
★ Low 6898.25

★ Close 6989.75

ES (Week Open) 6904.00

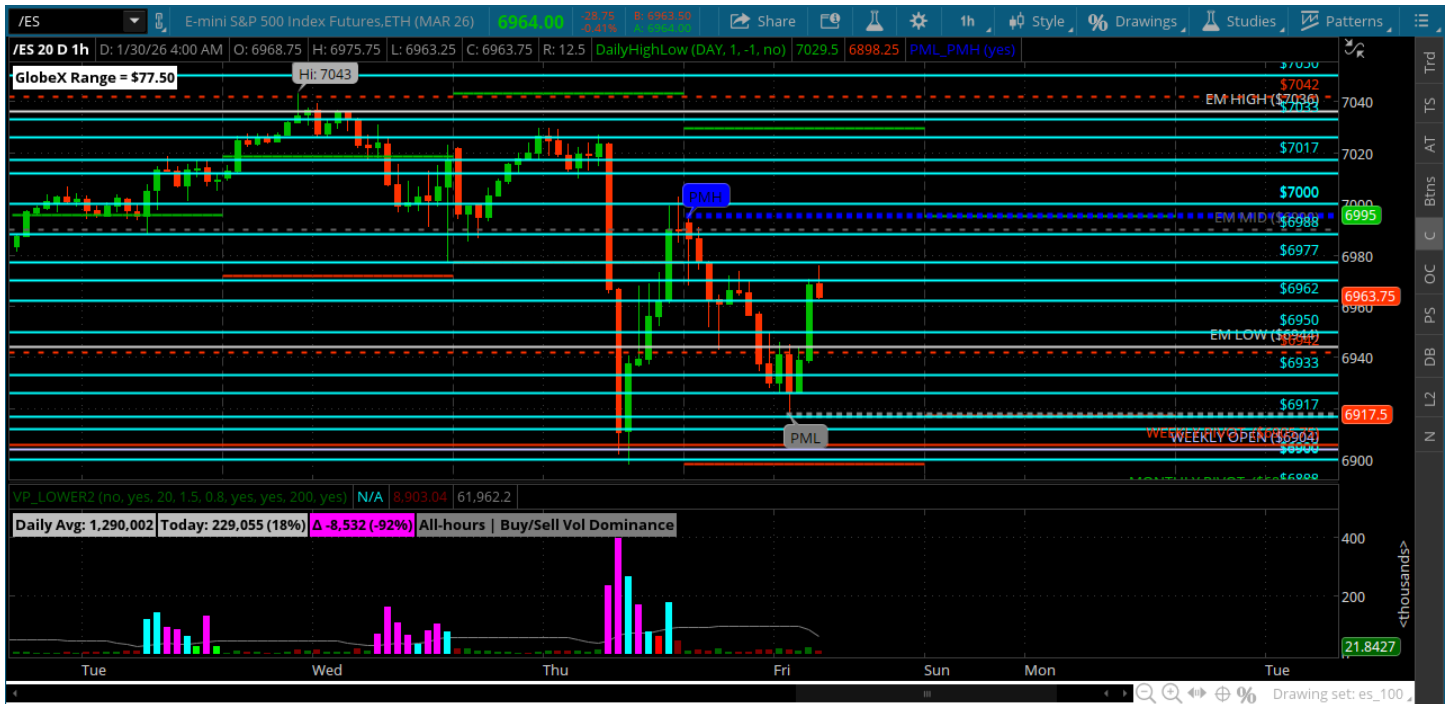
Pre-Market Charts to Watch

Friday, January 30, 2025 Pre-Market /NQ 1 Hour Chart



- Price reversed from 26250 aggressively all the way down to the weekly open where it held
- A retest of 26000 rejected and remains resistance
- Bulls have their work cut out for them - they need to close above the 26000
- Bears want to hold price under 26k and close the week under it

Friday, January 30, 2025 Pre-Market /ES 1 Hour Chart



- Aggressive reversal off the 7017 all the way down to weekly pivot and weekly open
- A retest of 7k was rejected to the 6917
- BIG Waves for ES so be patient today and wait for your setup
- Bulls need to close above 7k and bears need to hold it under 7k

Disclaimer:

Disclaimer: Neither TheoTrade or any of its officers, directors, employees, other personnel, representatives, agents or independent contractors is, in such capacities, a licensed financial adviser, registered investment adviser, registered broker-dealer or FINRA|SIPC|NFA-member firm. TheoTrade does not provide investment or financial advice or make investment recommendations. TheoTrade is not in the business of transacting trades, nor does TheoTrade agree to direct your brokerage accounts or give trading advice tailored to your particular situation. Nothing contained in our content constitutes a solicitation, recommendation, promotion, or endorsement of any particular security, other investment product, transaction or investment. Trading Futures, Options on Futures, and retail off-exchange foreign currency transactions involves substantial risk of loss and is not suitable for all investors. You should carefully consider whether trading is suitable for you in light of your circumstances, knowledge, and financial resources. You may lose all or more of your initial investment. Opinions, market data, and recommendations are subject to change at any time. Past Performance is not necessarily indicative of future results.