



Tony Rago's Pre-Market Playbook

- ★ ES WEEKLY PIVOT 6961.08
- ★ NQ WEEKLY PIVOT 25784.50
- ★ ES MONTHLY PIVOT 6939.58
- ★ NQ MONTHLY PIVOT 25581.08
- ★ Overnight Range
 - ES 101.50
 - NQ 465.50
 - VIX 18.50
- ★ **Bulls** need to hold above yest closes **6961 and 25639-- long above these**
- ★ Breakouts are above yesterday's highs **6995 and 25180.25 - aggressive longs** (await for confirmation with a new high and a retest of the highs from above that holds)
- ★ **Bears** need under overnight lows **short under 6864 and 25649**
- ★ Breakdown is below yest lows **6917 and 25568 -- aggressive shorts** (wait for confirmation with a new low and a retest of the lows from below that hold)
- ★ **RANGEBOUND: 2 Way trade long and shorts will work** to get the day done
- ★ Keep it simple and be patient for confirmation on either side or establish the range if we are going to be rangebound
- ★ Confirm rally continuation with sustained trade over the 30min IB High and likewise
- ★ bearish under the IB Low

ECON:

- 9:45 am S&P flash U.S. manufacturing PMI
- 10:00 am ISM manufacturing
- 1:00 pm Fed Gov. Stephen Miran TV interview

Pre-Market Trading Levels for today

GLOBEX

NQ

★ **HIGH:** 25645.75

★ **LOW:** 25180.25

★ **Bull Case** defend the 25312 to seek the 25333, 25412, 25500, 25612, 25633, 25750, 25812, 25833, 25912, 26000, 26106, 26250, 26312, 26333

★ **Bear Case** seal the 25750 to seek the 25633, 25612, 25500, 25412, 25333, 25312, 25250, 25106, 25000

★ **Overnight Range - 465.50**

NQ (Prev. Day)

★ High 26020.00

★ Low 25568.75

★ Close 25639.25

NQ (Week Open) 25530.00

S&P 500

★ **HIGH** - 6965.75

★ **LOW** - 6864.50

★ **Bull Case:** defend the 6900 to seek the 6912, 6917, 6926, 6933, 6942, 6950, 6962, 6977, 6988, 7000, 7012, 7017, 7026, 7033, 7042, 7050, 7062, 7077, 7088, 7100

★ **Bear Case:** seal the 6988 to seek the 6977, 6962, 6950, 6933, 6926, 6917, 6912, 6900, 6888, 6877

★ **Overnight Range** - 101.25

ES (Prev Day)

★ High 6995.00

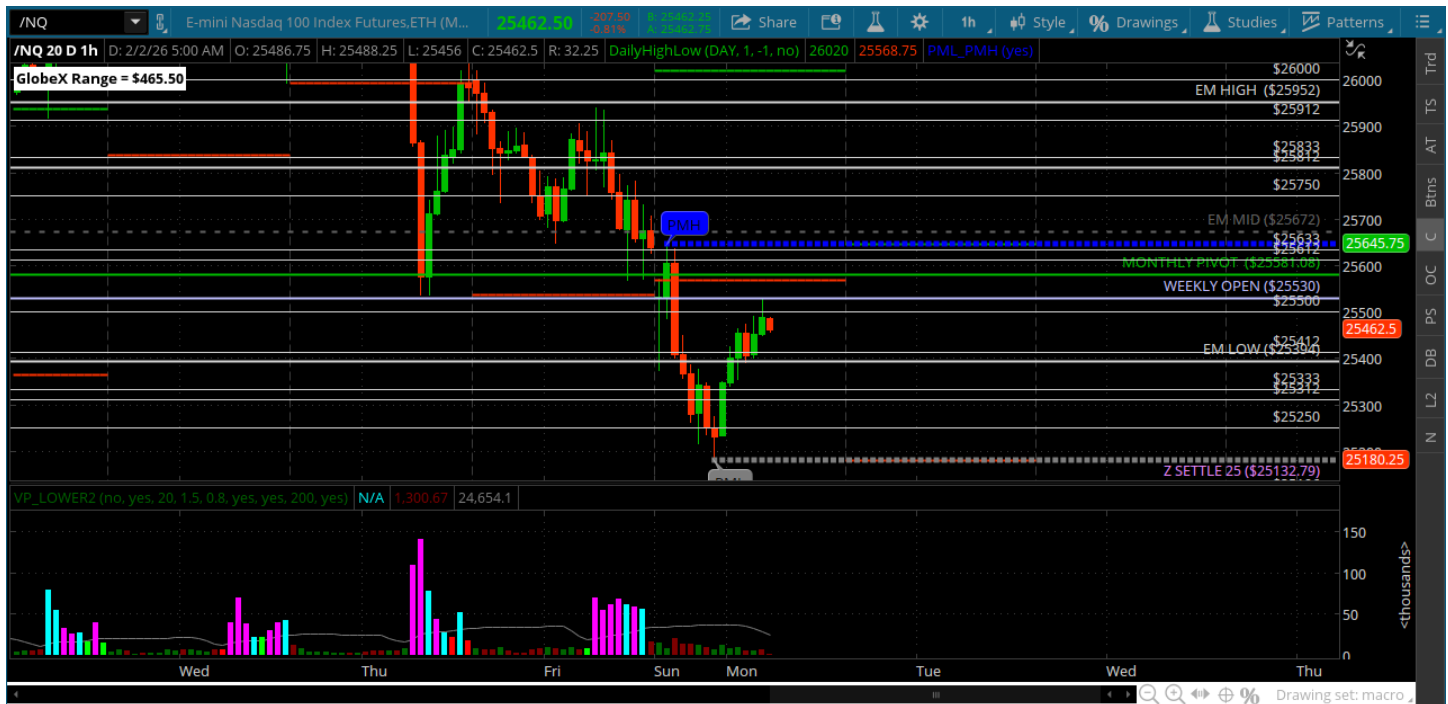
★ Low 6917.50

★ Close 6961.25

ES (Week Open) 6938.50

Pre-Market Charts to Watch

Monday, February 2, 2025 Pre-Market /NQ 1 Hour Chart



- Gap down to 25412 and a gap fill followed by a push to the 25250
- We are +300 off the lows coming into the bell
- Could be an interesting day with big swings
- Bulls want to close above the weekly open 25530

Monday, February 2, 2025 Pre-Market /ES 1 Hour Chart



- Gap down and fill at the open then a push to the 6862 below – bulls have brought us all the way back to the 6942 pre-market
- Could be a wild day today with these overnight ranges
- Gold and Silver continue to also be very volatile and affecting our markets
- Lower highs holding on some longer time frames so we have to see how we open
- Bulls need to close above the weekly open 6938.50

Disclaimer:

Disclaimer: Neither TheoTrade or any of its officers, directors, employees, other personnel, representatives, agents or independent contractors is, in such capacities, a licensed financial adviser, registered investment adviser, registered broker-dealer or FINRA|SIPC|NFA-member firm. TheoTrade does not provide investment or financial advice or make investment recommendations. TheoTrade is not in the business of transacting trades, nor does TheoTrade agree to direct your brokerage accounts or give trading advice tailored to your particular situation. Nothing contained in our content constitutes a solicitation, recommendation, promotion, or endorsement of any particular security, other investment product, transaction or investment. Trading Futures, Options on Futures, and retail off-exchange foreign currency transactions involves substantial risk of loss and is not suitable for all investors. You should carefully consider whether trading is suitable for you in light of your circumstances, knowledge, and financial resources. You may lose all or more of your initial investment. Opinions, market data, and recommendations are subject to change at any time. Past Performance is not necessarily indicative of future results.