



## *Tony Rago's Pre-Market Playbook*

---

### ★ Overnight Range

- ES 34.50
- NQ 159.75
- VIX 17.66

- ★ **Bulls** need to hold above yest closes **6938** and **25421**-- long above these
- ★ Breakouts are above yesterday's highs **7027** and **26027** - **aggressive longs** (await for confirmation with a new high and a retest of the highs from above that holds)
- ★ **Bears** need under overnight lows **short under 6931** and **25354**
- ★ Breakdown is below yest lows **6886** and **25219** -- **aggressive shorts** (wait for confirmation with a new low and a retest of the lows from below that hold)
- ★ **RANGEBOUND: 2 Way trade long and shorts will work** to get the day done
- ★ Keep it simple and be patient for confirmation on either side or establish the range if we are going to be rangebound
- ★ Confirm rally continuation with sustained trade over the 30min IB High and likewise
- ★ bearish under the IB Low

### ECON:

- 9:45 am S&P final U.S. services PMI
- 10:00 am ISM services
- 6:30 pm Fed Governor Lisa Cook speaks

## *Pre-Market Trading Levels for today*

---

### GLOBEX

#### NQ

★ **HIGH:** 25514.25

★ **LOW:** 25354.50

★ **Bull Case** defend the 25333 to seek the 25412, 25500, 25612, 25633, 25750, 25812, 25833, 25912, 26000, 26106, 26250, 26312, 26333

★ **Bear Case** seal the 25912 to seek the 25833, 25750, 25633, 25612, 25500, 25412, 25333, 25312, 25250, 25106, 25000

★ **Overnight Range - 159.75**

#### NQ (Prev. Day)

★ High 26027.75

★ Low 25219.00

★ Close 25421.25

**NQ (Week Open) 25530.00**

## S&P 500

★ **HIGH** - 7027.25

★ **LOW** - 7002.50

★ **Bull Case:** defend the 6926 to seek the 6933, 6950, 6962, 6988, 7000, 7012, 7017, 7026, 7033, 7042, 7050, 7062, 7077, 7088, 7100

★ **Bear Case:** seal the 6988 to seek the 6977, 6962, 6950, 6933, 6926, 6917, 6912, 6900, 6888, 6877

★ **Overnight Range** - 34.50

## ES (Prev Day)

★ High 7017.25

★ Low 6864.50

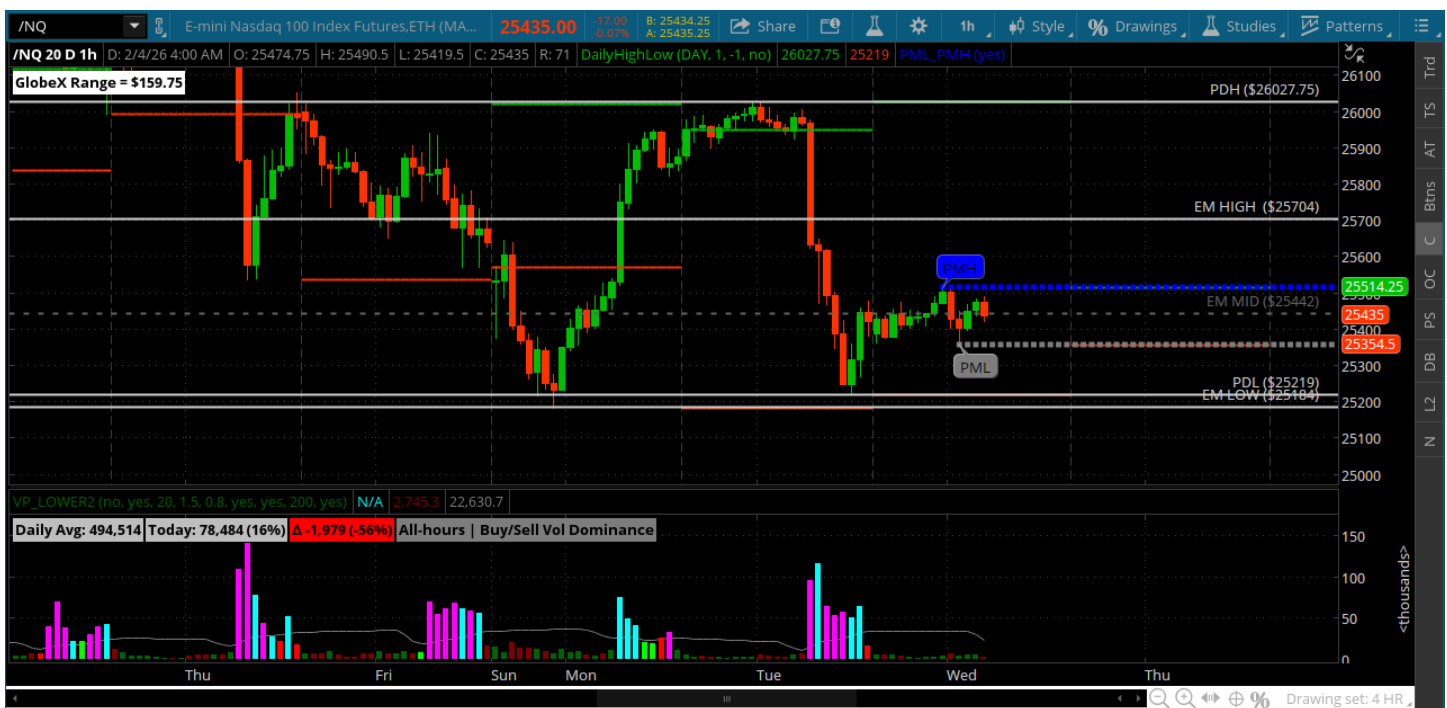
★ Close 7003.25

★

**ES (Week Open) 6938.50**

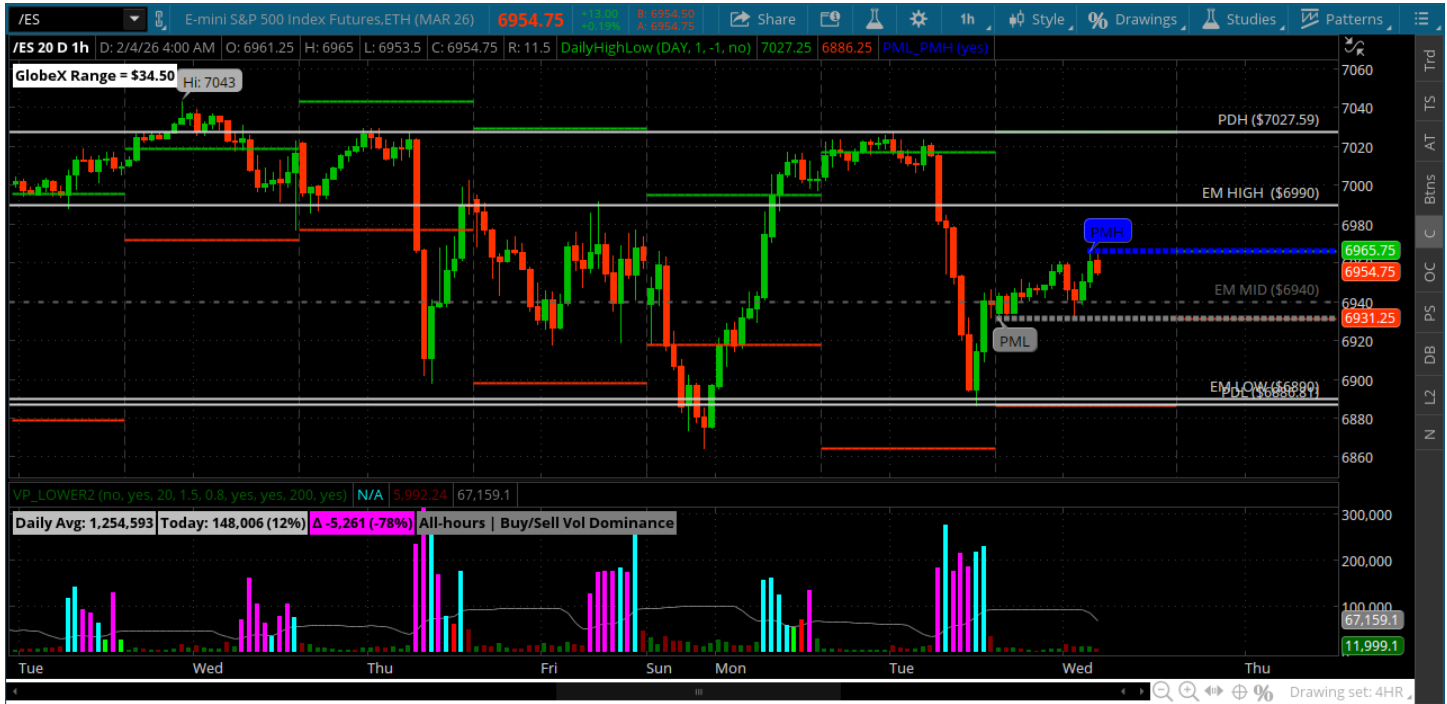
# Pre-Market Charts to Watch

## Wednesday, February 4, 2025 Pre-Market /NQ 1 Hour Chart



- Gave it all back but left a slight higher low
- Big ranges back to back
- Key for bulls is to get and stay above the weekly open 25530
- Bears want to keep price under that and go after the 25132 and 25106 below

## Wednesday, February 4, 2025 Pre-Market /ES 1 Hour Chart



- BIG rally out of the gate and left many behind
- Bulls need to defend pullback to the 6977 and 6962
- Above 7000 they can reach for the all time high at 7043
- Bears get the ball back under the 6950

*Disclaimer:*

Disclaimer: Neither TheoTrade or any of its officers, directors, employees, other personnel, representatives, agents or independent contractors is, in such capacities, a licensed financial adviser, registered investment adviser, registered broker-dealer or FINRA|SIPC|NFA-member firm. TheoTrade does not provide investment or financial advice or make investment recommendations. TheoTrade is not in the business of transacting trades, nor does TheoTrade agree to direct your brokerage accounts or give trading advice tailored to your particular situation. Nothing contained in our content constitutes a solicitation, recommendation, promotion, or endorsement of any particular security, other investment product, transaction or investment. Trading Futures, Options on Futures, and retail off-exchange foreign currency transactions involves substantial risk of loss and is not suitable for all investors. You should carefully consider whether trading is suitable for you in light of your circumstances, knowledge, and financial resources. You may lose all or more of your initial investment. Opinions, market data, and recommendations are subject to change at any time. Past Performance is not necessarily indicative of future results.